

Wettergrafiken und Tabelle April 2010 Station Schlangen BK

Klimadaten Wetterstation Schlangen BK

Standortkoordinaten: geogr. 08°43' "O - 51°47' "N

172 m ü. NN

Monatswerte: April 2010

Temperaturmittel: 9,7°C (Vj. 13,5 °C)

Lj.Mittel:(Lipp.1961-90): 7,9 °C

Abweichung 1,8 °C

Absoluts Max.: 25,7 °C

Absolutes Min -1,9 °C

Tage mit Schneedecke:

Eistage(Max<0,0°C):

Frosttage(MIN<0,0°C): 5

Sommertage(Max>=25°C): 2

Heiße Tage(Max>=30°C):

Niederschlagssumme: 21,6 mm (Vj. 56,2 mm)

Max.Tag: 8,6 mm

Lj.Mittel(Lipp. 1961-90): 66,6 mm

Mittel relative Feuchte: 62,0 %

Max. Windböe: 46,0 km/h

Mittlere Wind: 9,0 km/h

Luftdruck(Meereshöhe):hPa

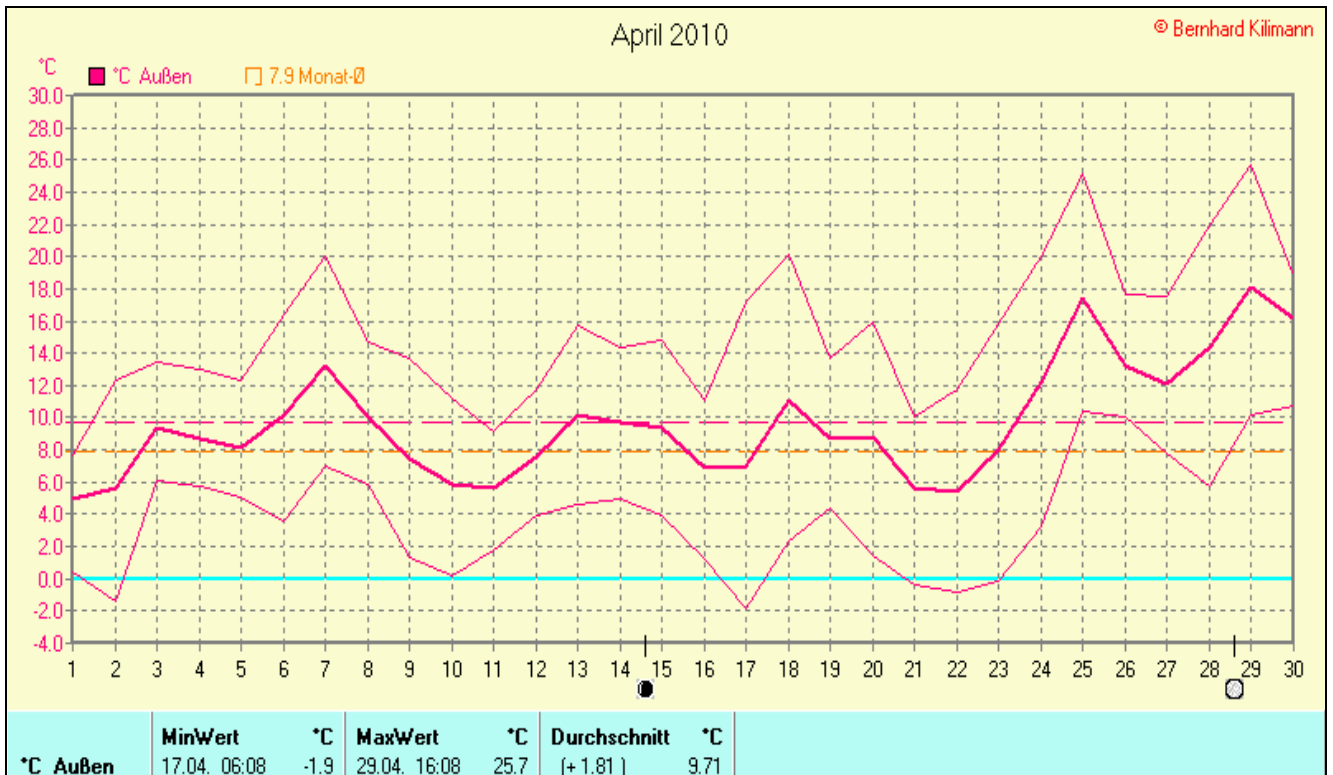
Absolutes Max.: 1033

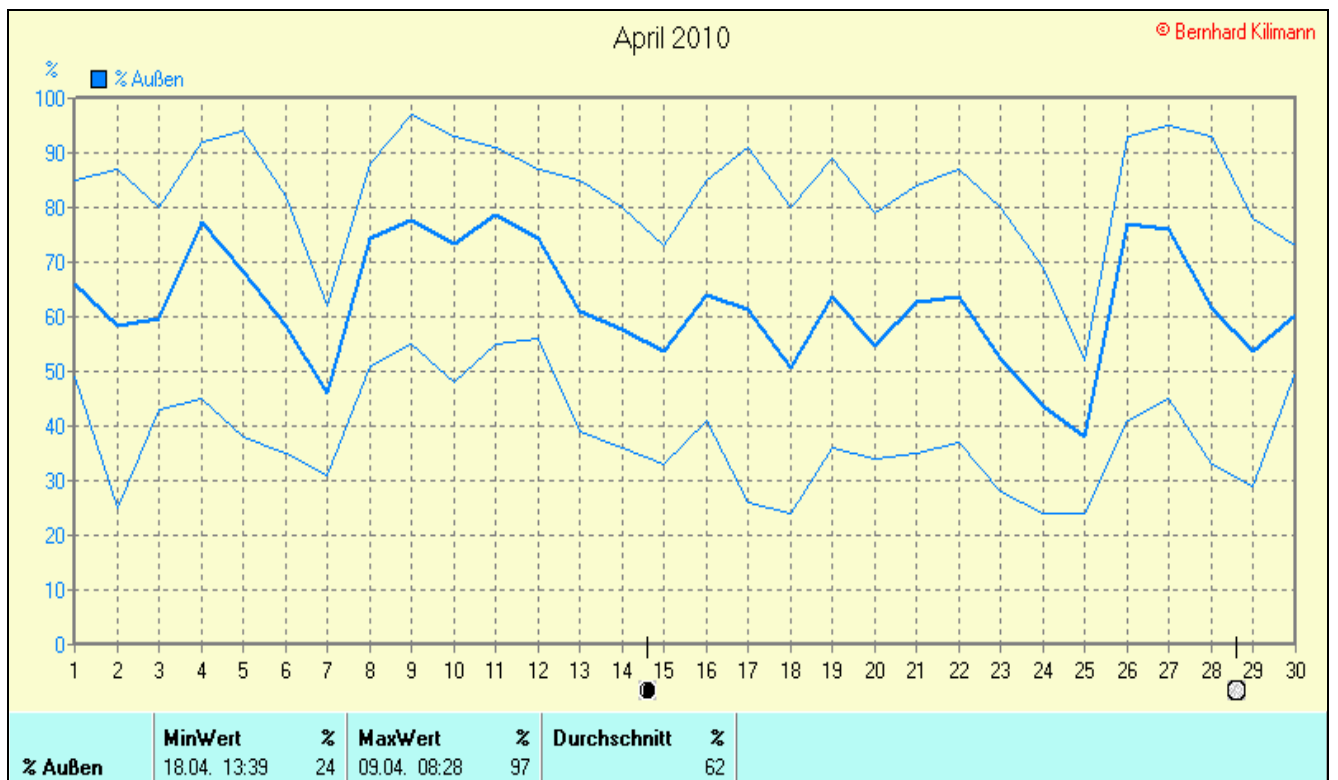
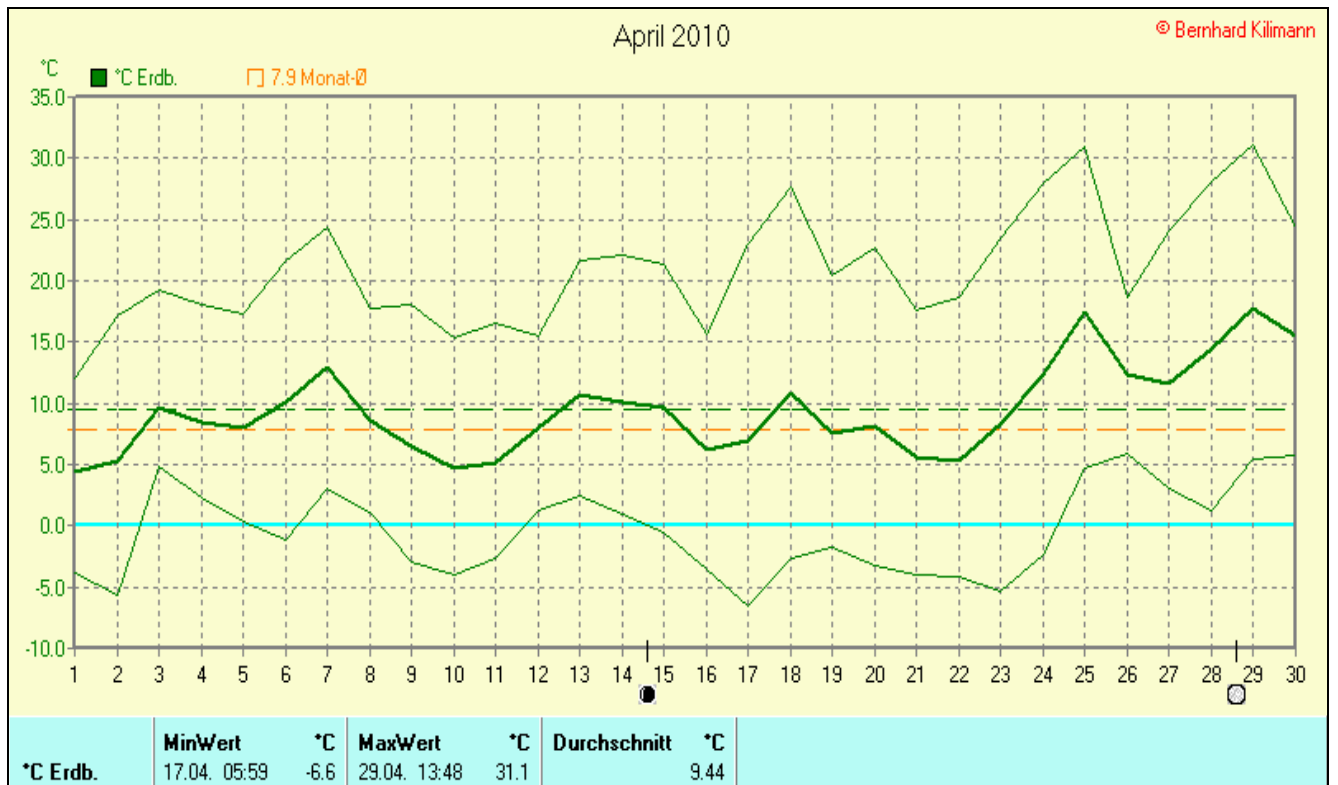
Absolutes Min.: 1002

Mittel: 1019

Sonnenscheindauer: 256,5 h

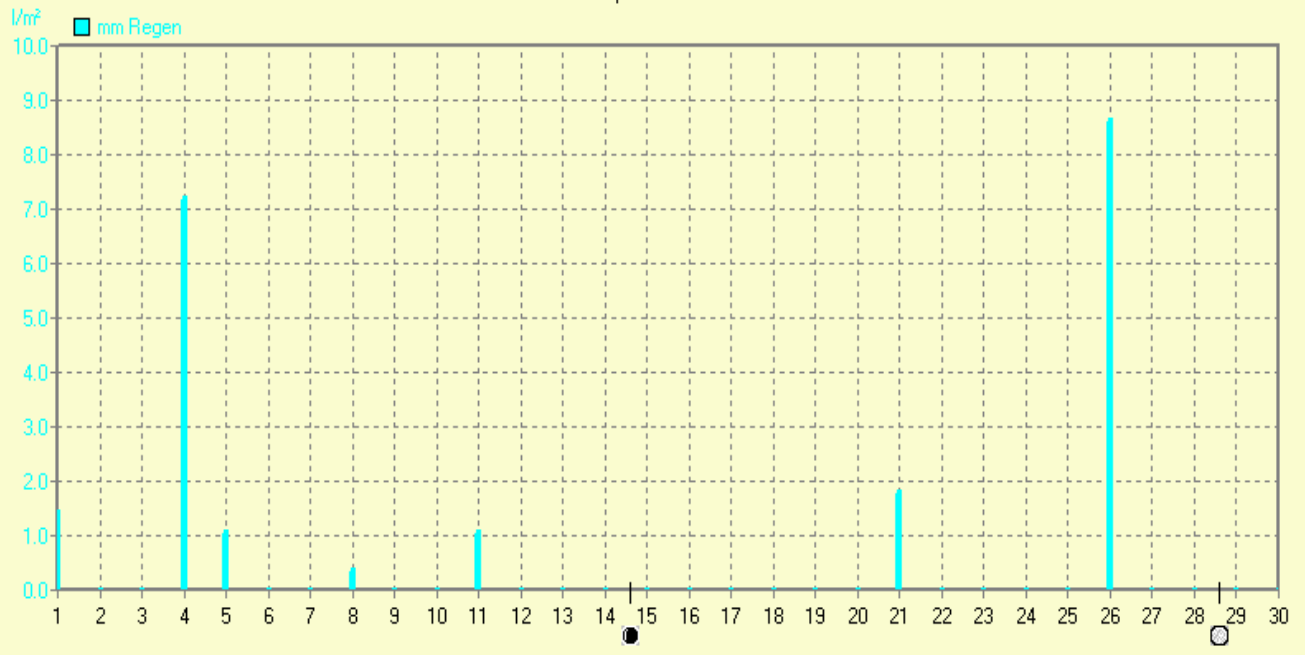
Lj.Mittel(Lipp.1961-90): 147,6 h





April 2010

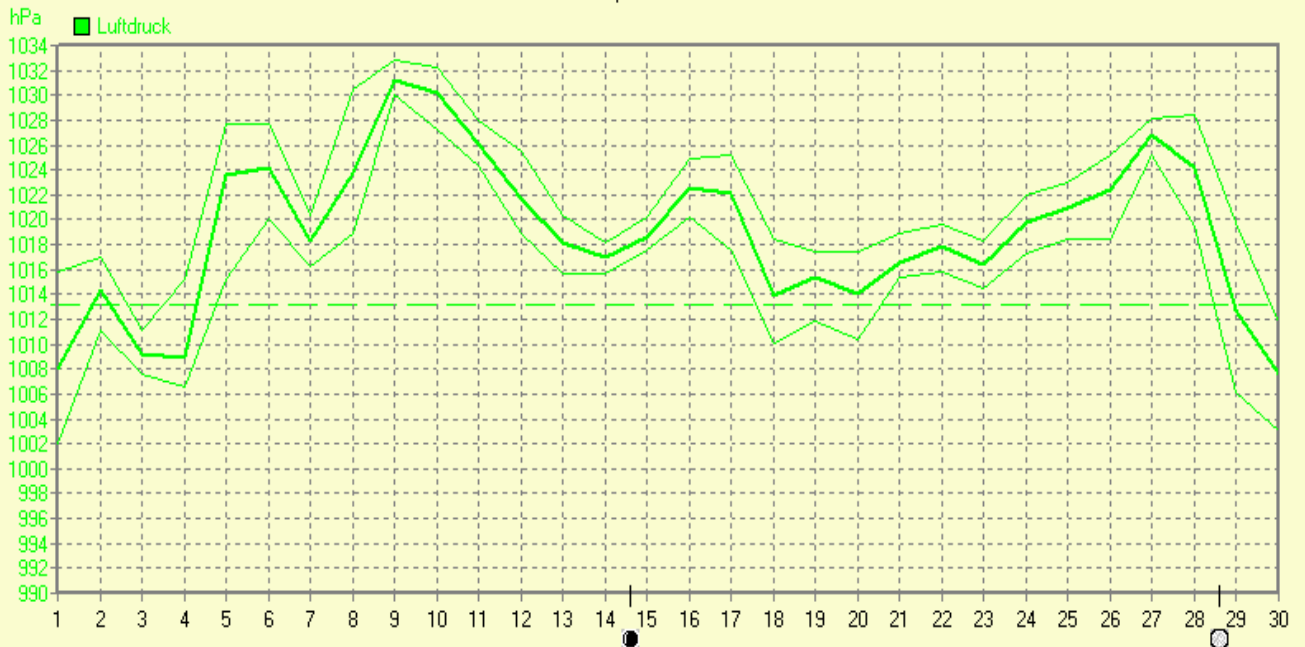
© Bernhard Kilmann



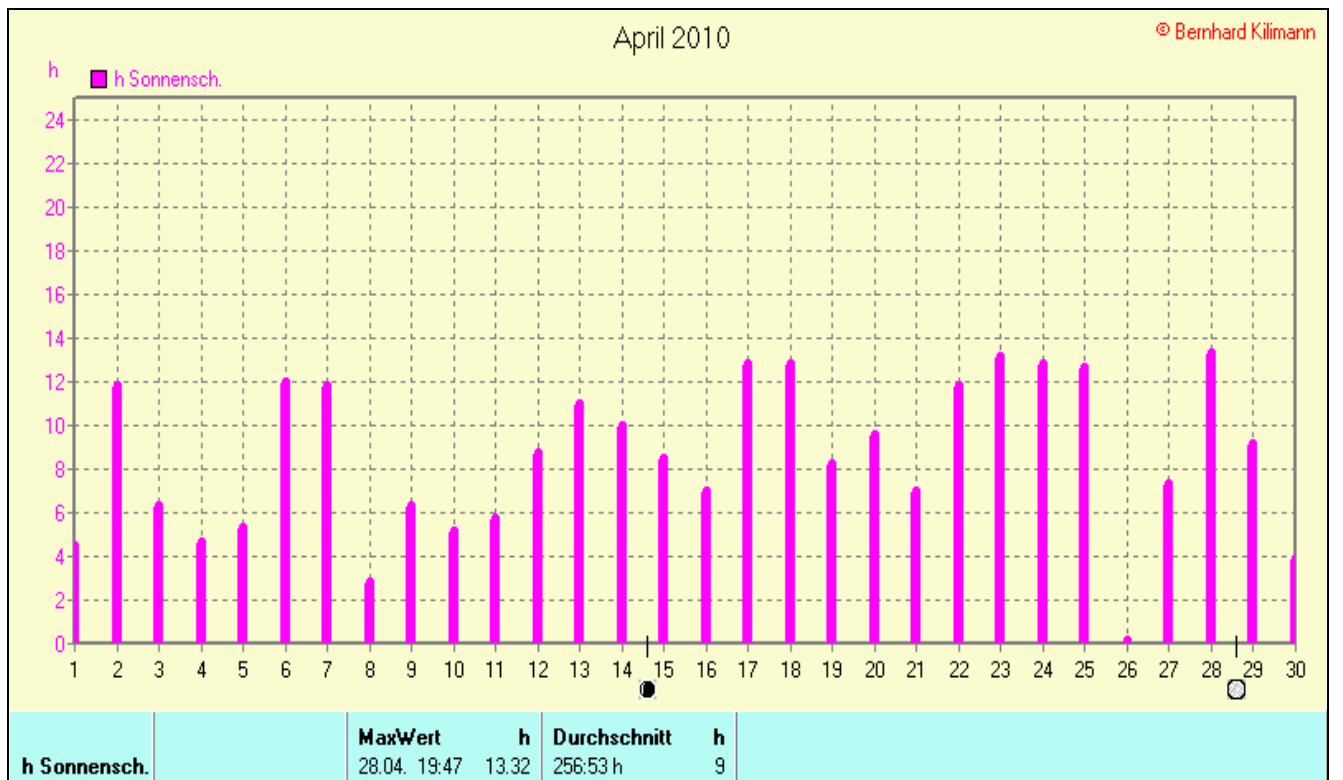
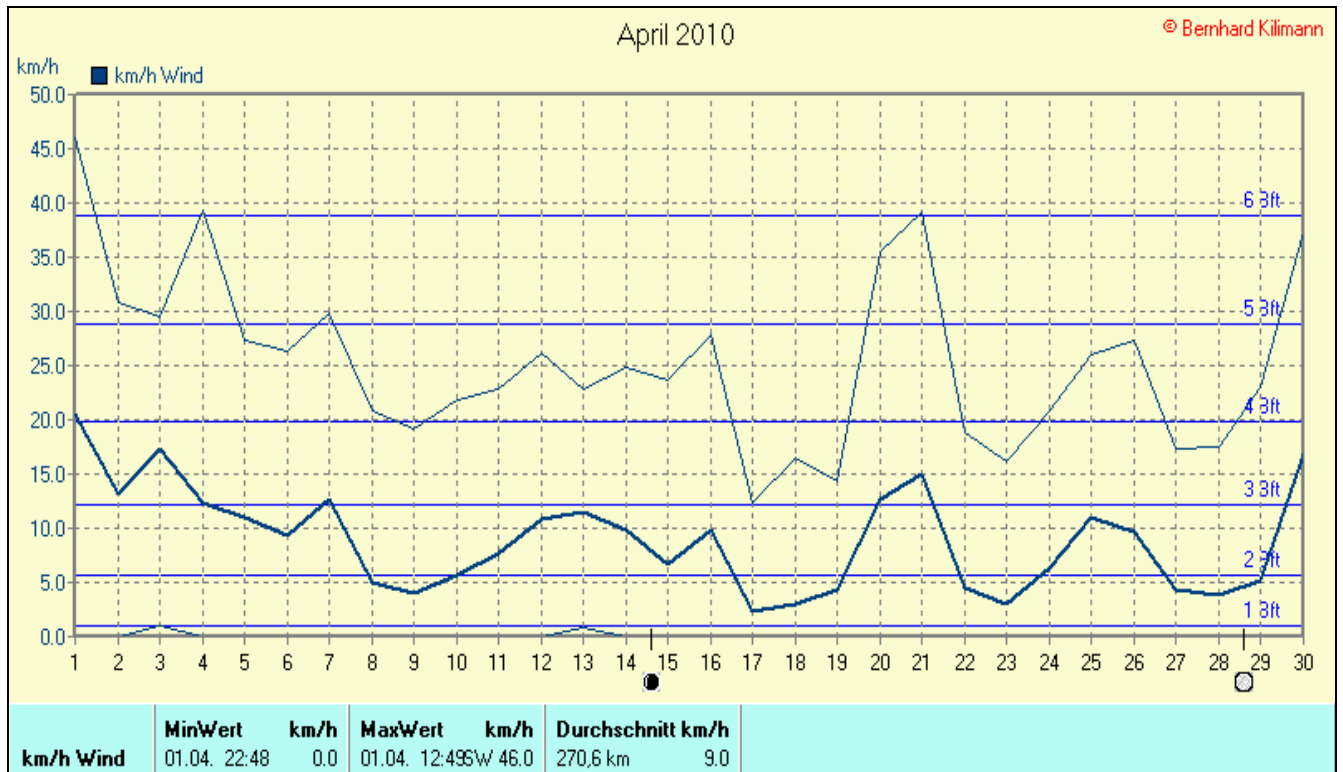
mm Regen	Regentage 7	MaxWert 26.04. 05:48	l/m² 8.6	Gesamt	l/m² 21.6
-----------------	-----------------------	--------------------------------	--------------------	---------------	---------------------

April 2010

© Bernhard Kilmann

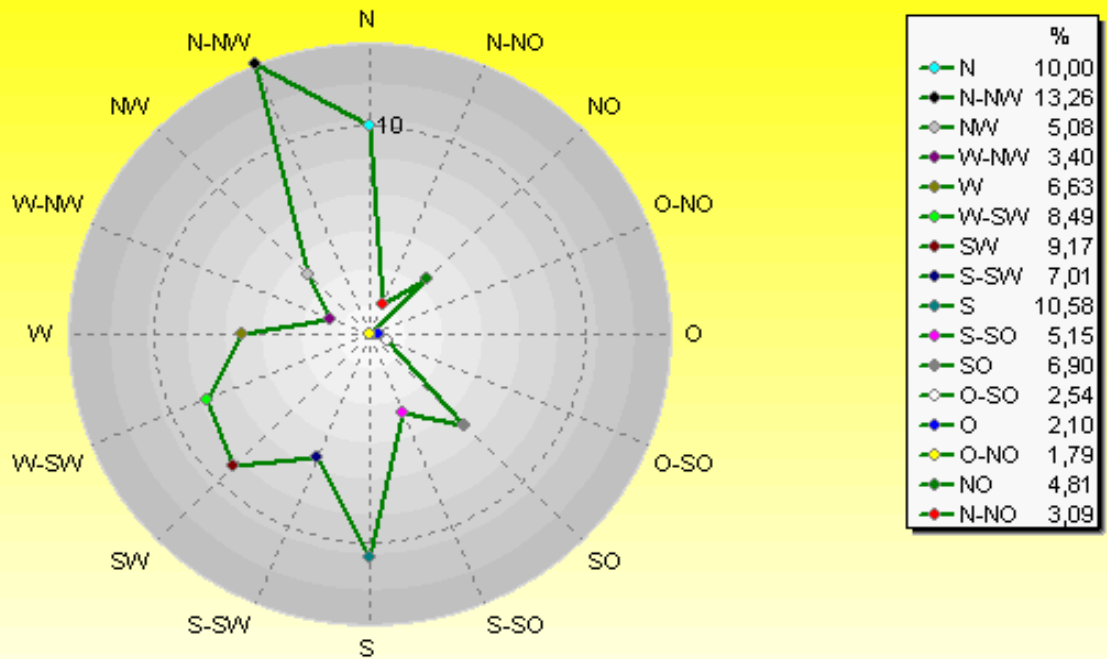


Luftdruck	MinWert 01.04. 00:38	hPa 1002.1	MaxWert 09.04. 08:38	hPa 1032.8	Durchschnitt 1018.9
------------------	--------------------------------	----------------------	--------------------------------	----------------------	-------------------------------



Verteilung Windrichtung April 2010

Schlangen, südl. Teutoburger Wald

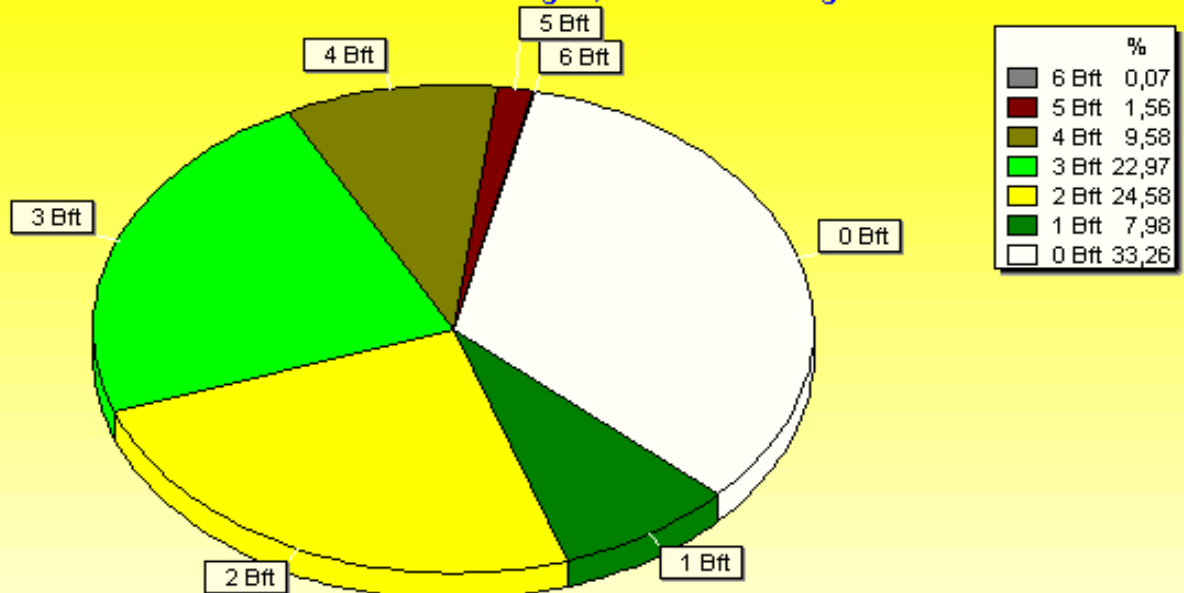


2911 / 1451 Werte -> 33.3% Windstille - Ø 9,0km/h - Max. 46,0km/h - 6494,4 km

© WsWin32 - © Bernhard Kilimann - Schlangen, südl. Teutoburger Wald

Verteilung Windstärke April 2010

Schlangen, südl. Teutoburger Wald



4362 Werte - Ø 9,0km/h - Max. 46,0km/h - 6494,4 km

© WsWin32 - © Bernhard Kilimann - Schlangen, südl. Teutoburger Wald