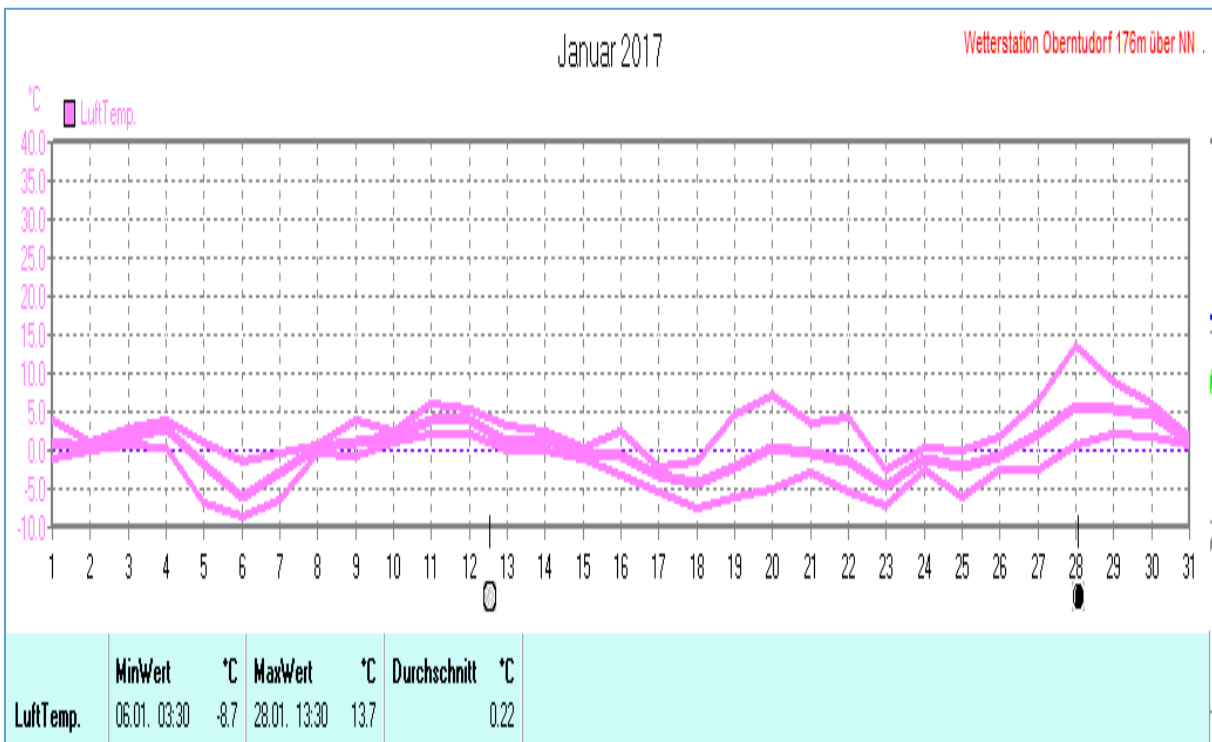
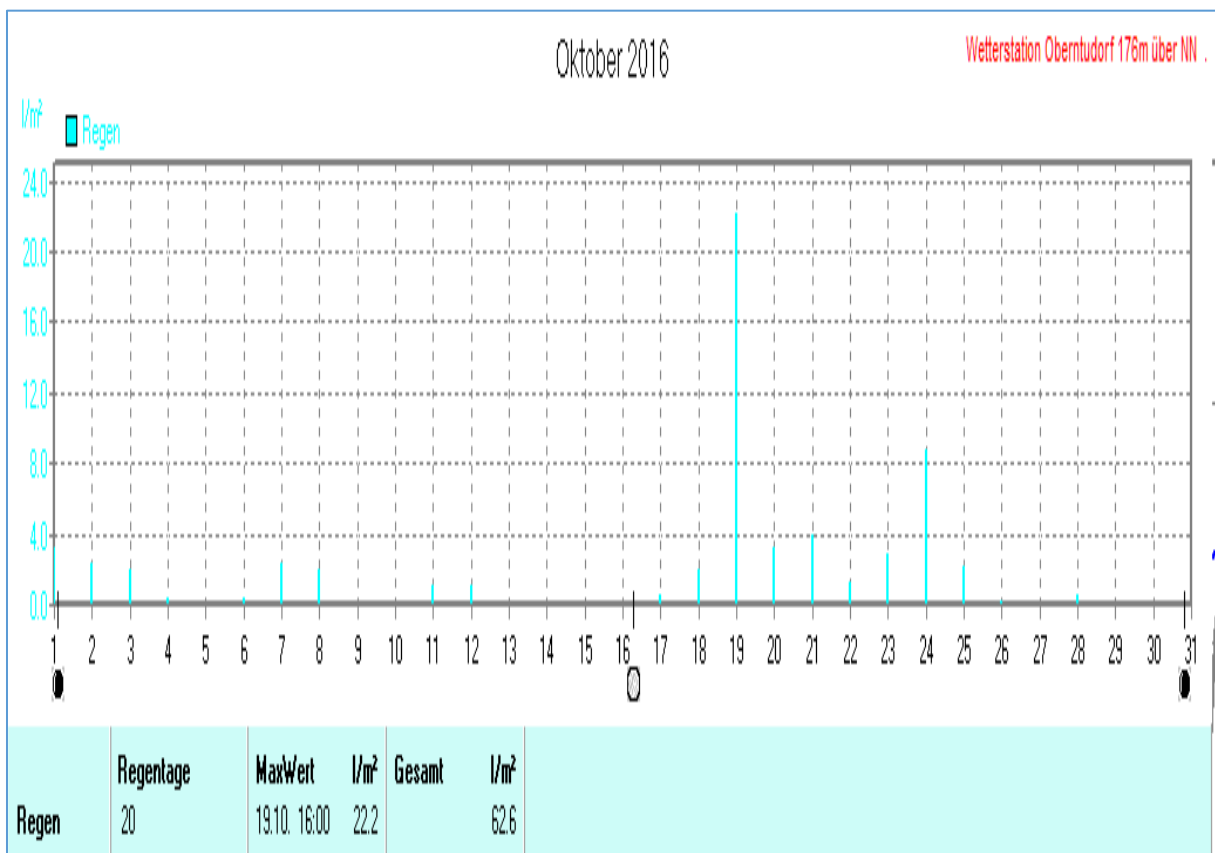
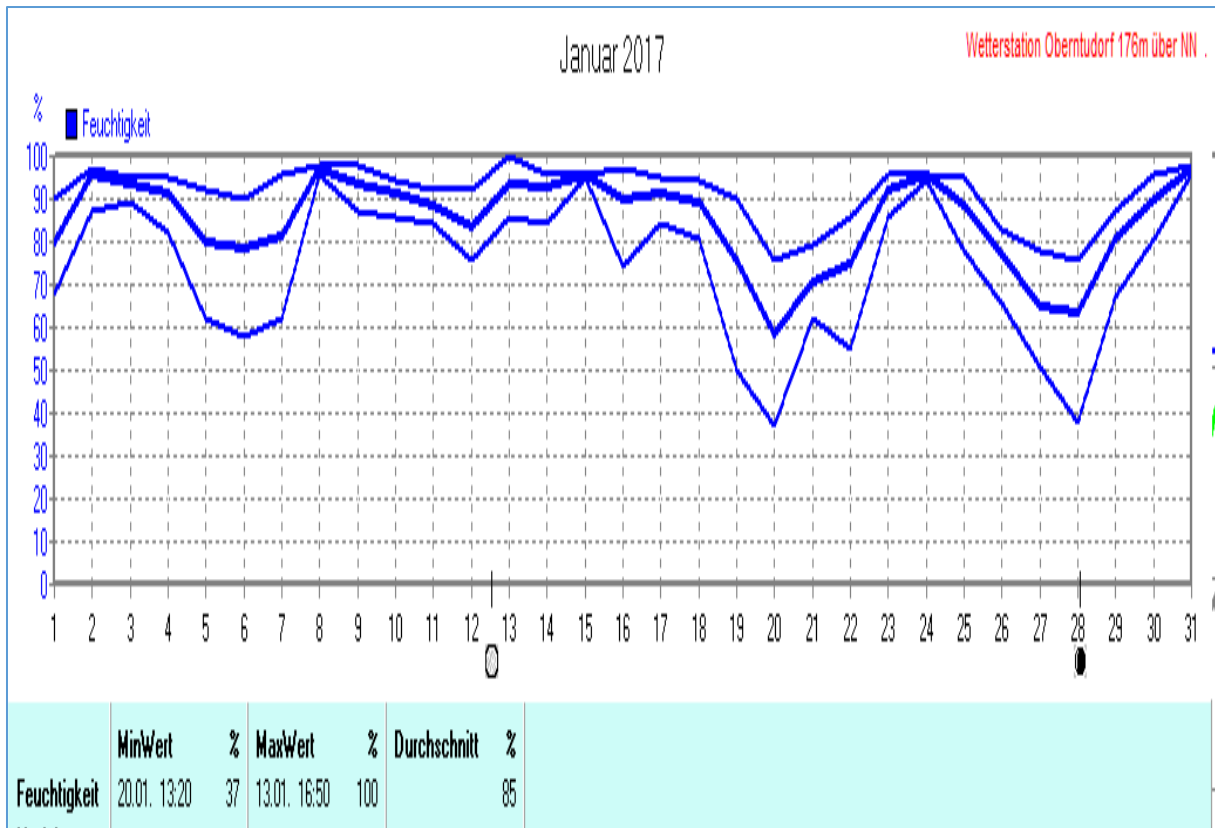
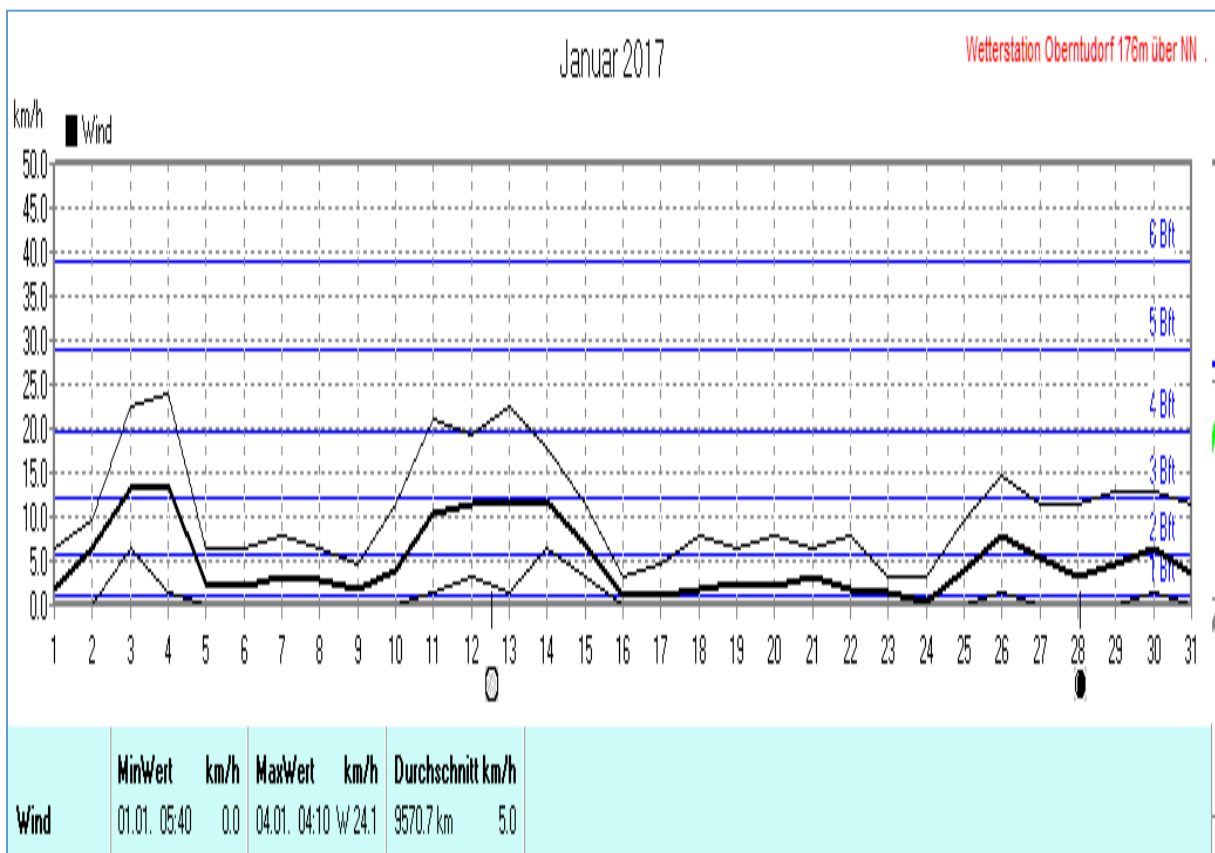
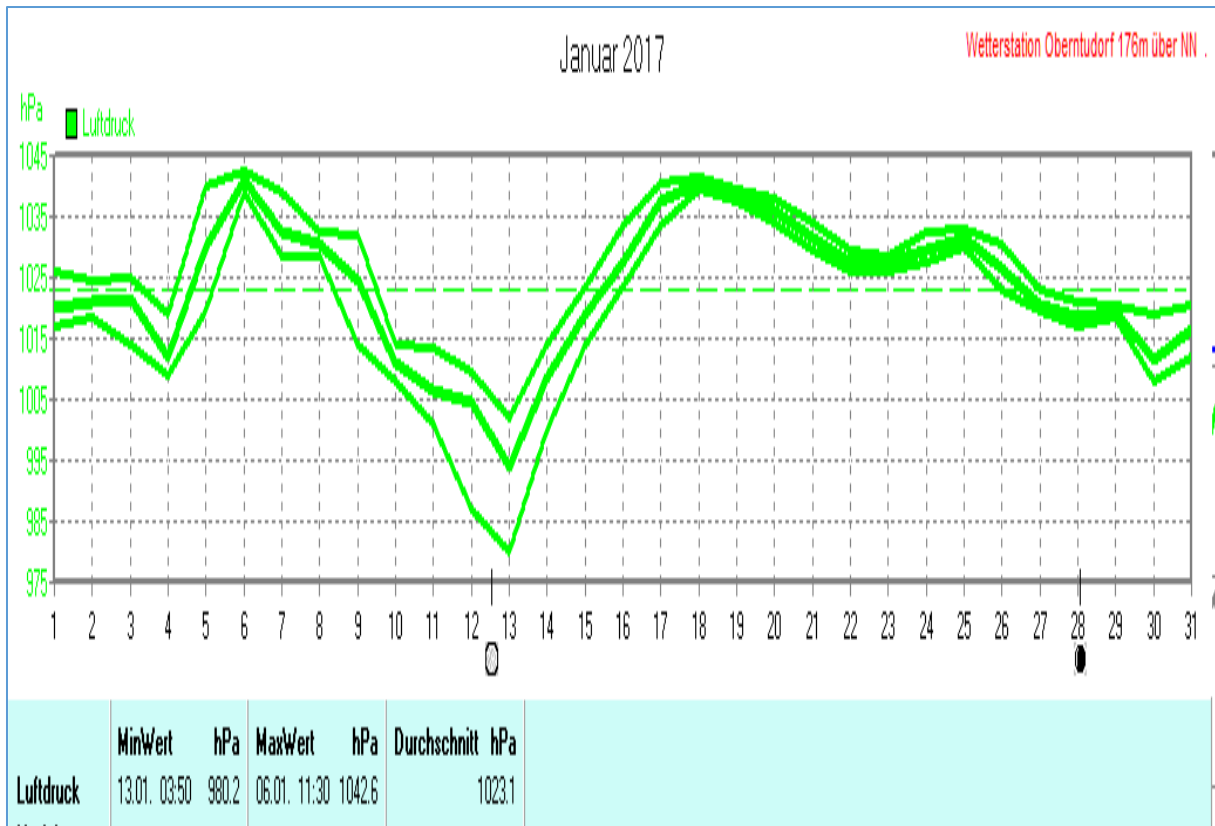


## Wetterdaten Januar 2017 Station Oberntudorf

Meßgröße	Minimum	Zeit	Datum	Maximum	Zeit	Datum	Durchschnitt
Lufttemp.	-8,7 °C	03:30	06.01.2017	13,7 °C	13:30	28.01.2017	0,2 °C
Bodentemp.	-8,3 °C	03:10	06.01.2017	9,4 °C	12:10	28.01.2017	-0,3 °C
Luftfeuchte	37 %	13:20	20.01.2017	100 %	16:50	13.01.2017	85 %
Luftdruck	980,2 hPa	03:50	13.01.2017	1042,6 hPa	11:30	06.01.2017	1023,1 hPa
Wind km/h				24,1 km/h	04:10	04.01.2017	5,0 km/h
Wind °				W	04:10	04.01.2017	O-SO
Regen l/m <sup>2</sup>				6,0 l/m <sup>2</sup>	09:10	03.01.2017	#34,000 l/m <sup>2</sup>
Evapotransp.							#10,865 l/m <sup>2</sup>
Solar				390 W/m <sup>2</sup>	11:50	29.01.2017	32 W/m <sup>2</sup>
Sonne h				6:50 h	16:50	27.01.2017	#73:00 h

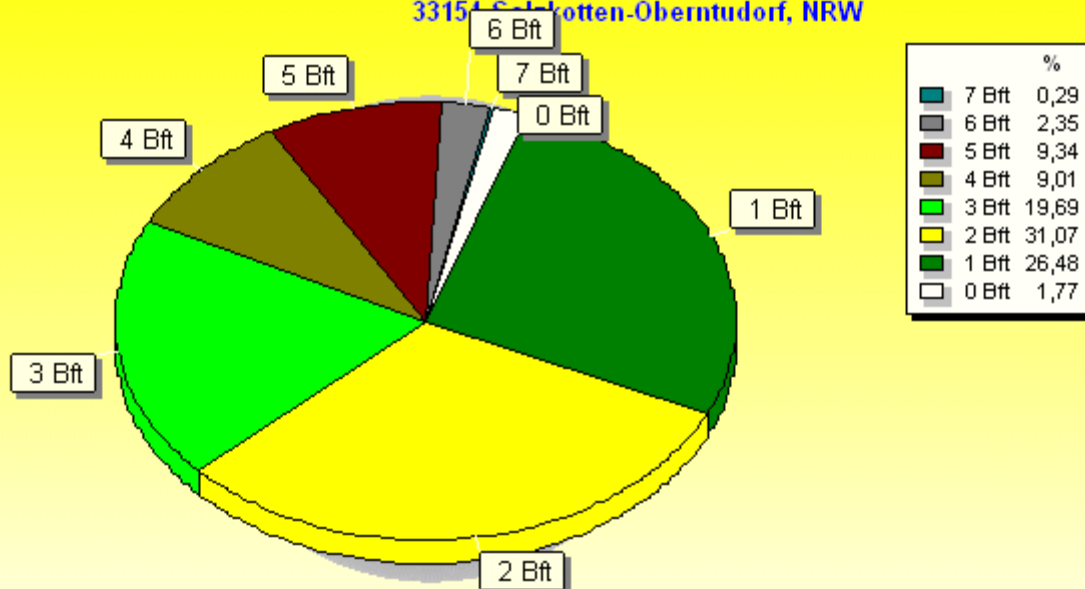






### Windböen: Verteilung Windstärke Januar 2017

33154 Salzotten-Oberntudorf, NRW

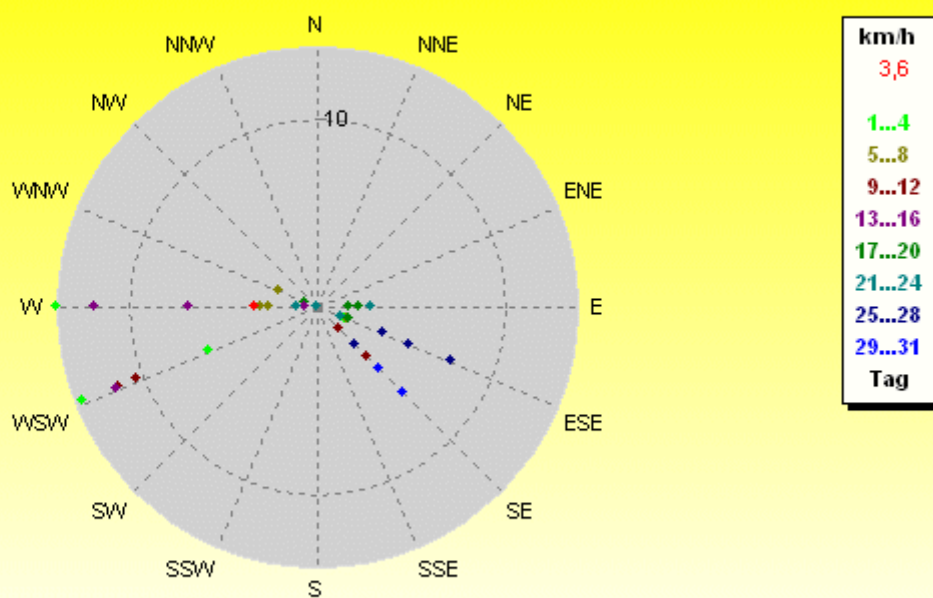


4464 Werte - Ø 12,9km/h - Max. 56,3km/h = Windböen - 9570.7 km

© WzWin32 - Wetterstation Oberntudorf 116m über NN . - © 1999-2017 Jürgen Pinger - Davis VantagePro2Plus

### Verteilung Windrichtung/Windgeschwindigkeit Januar 2017

33154 Salzotten-Oberntudorf, NRW

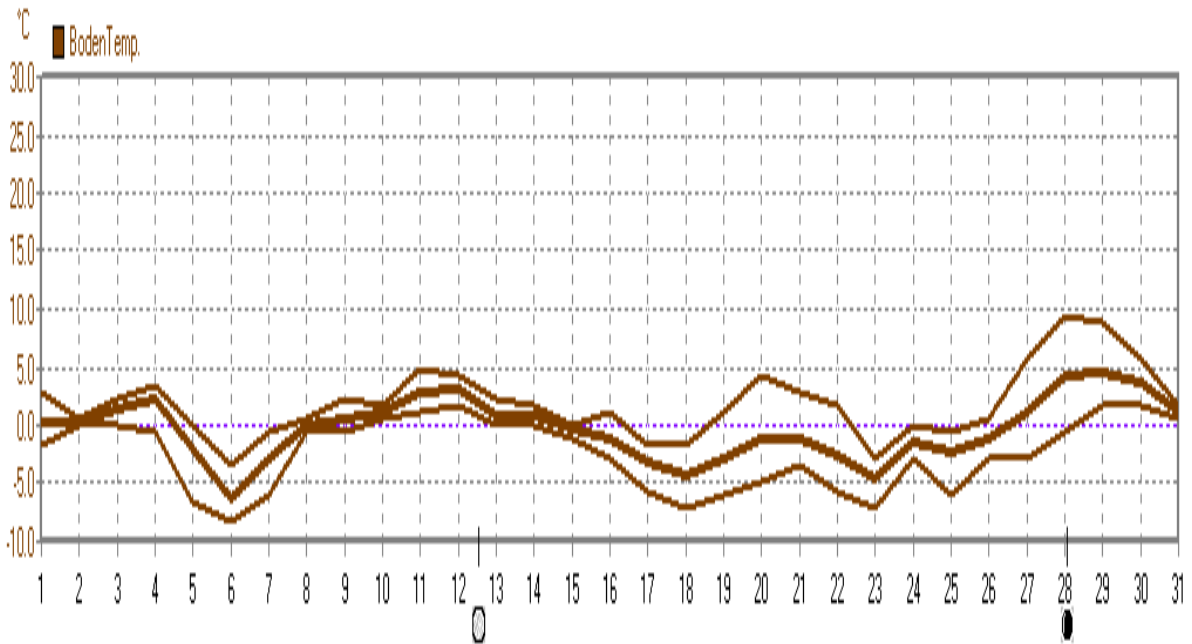


31 Werte - Ø 5,0km/h - Max. 24,1km/h - 9570.7 km

© WzWin32 - Wetterstation Oberntudorf 116m über NN . - © 1999-2017 Jürgen Pinger - Davis VantagePro2Plus

Januar 2017

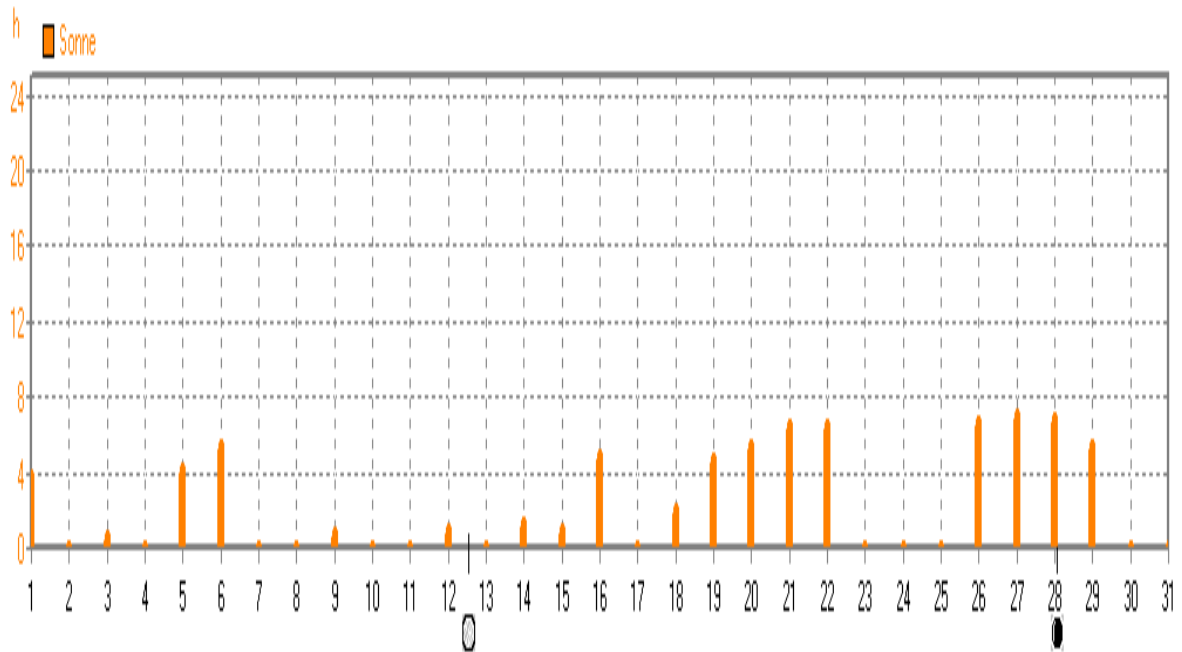
Wetterstation Oberntudorf 176m über NN



	MinWert	°C	MaxWert	°C	Durchschnitt	°C	
BodenTemp.	06.01.	03:10	-8.3	28.01.	12:10	9.4	-0.27

Januar 2017

Wetterstation Oberntudorf 176m über NN



	MaxWert	h	Durchschnitt	h
Sonne	27.01. 16:50	6.83	73:00 h	2