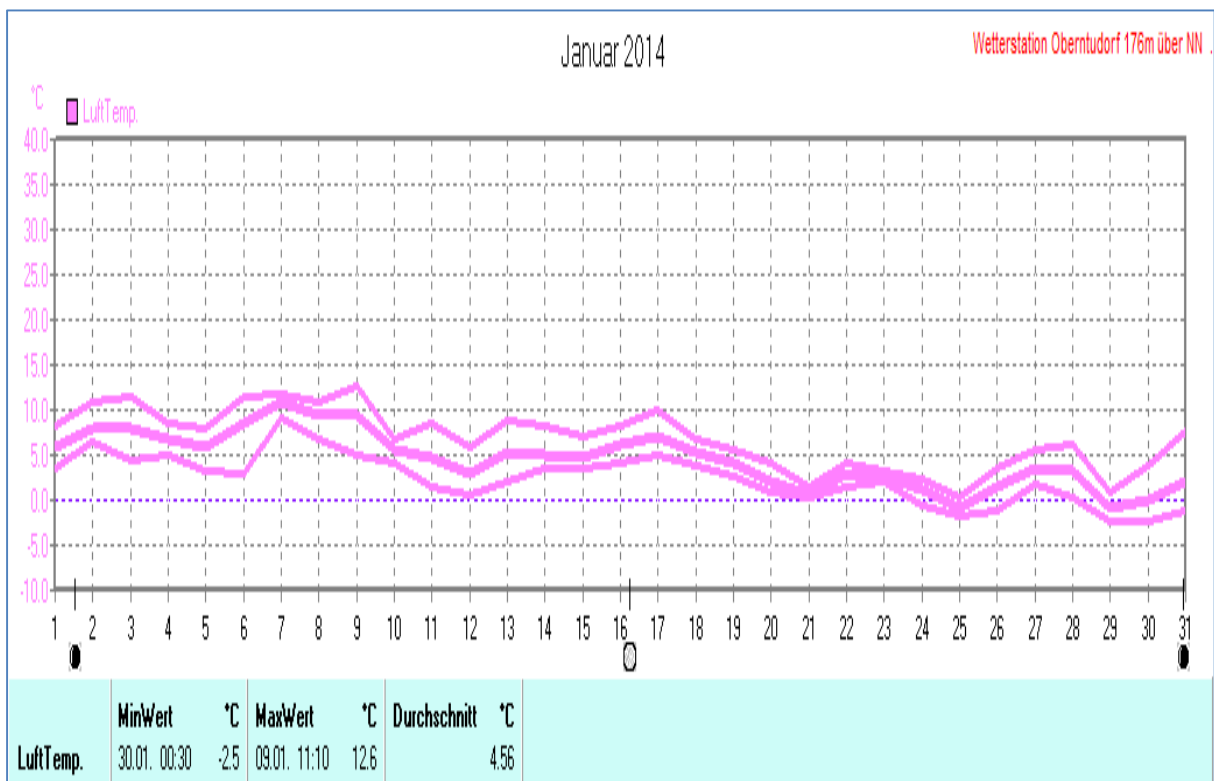
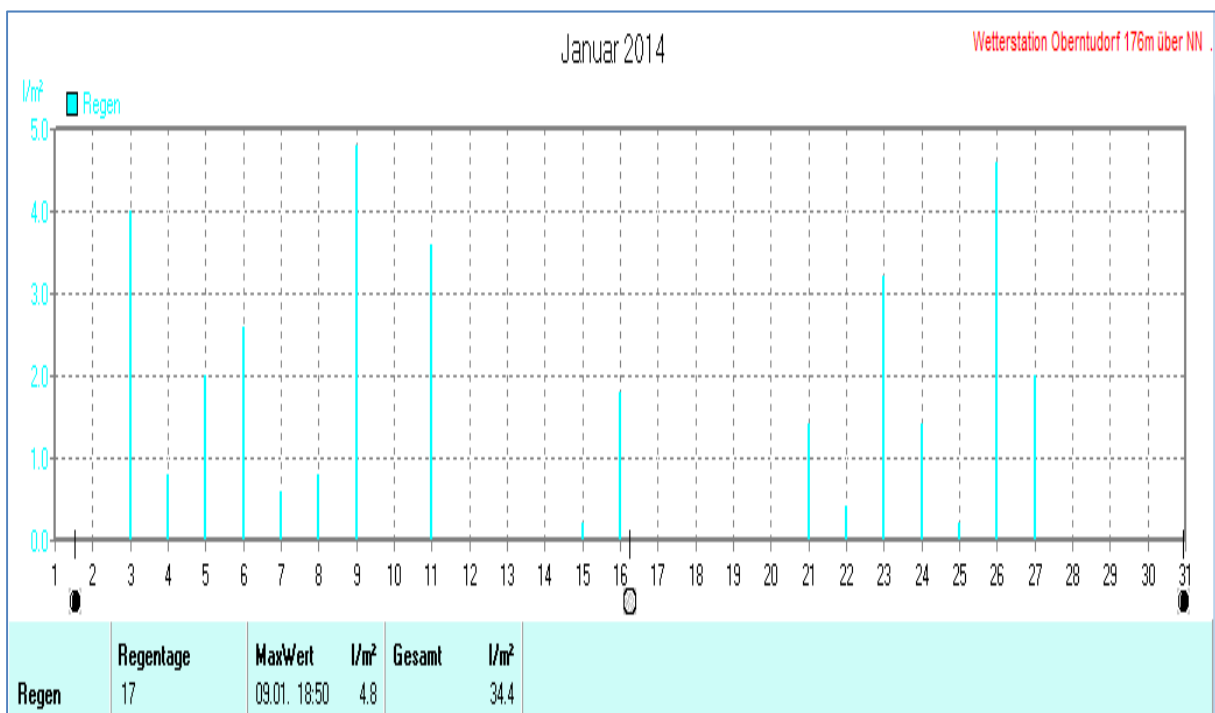
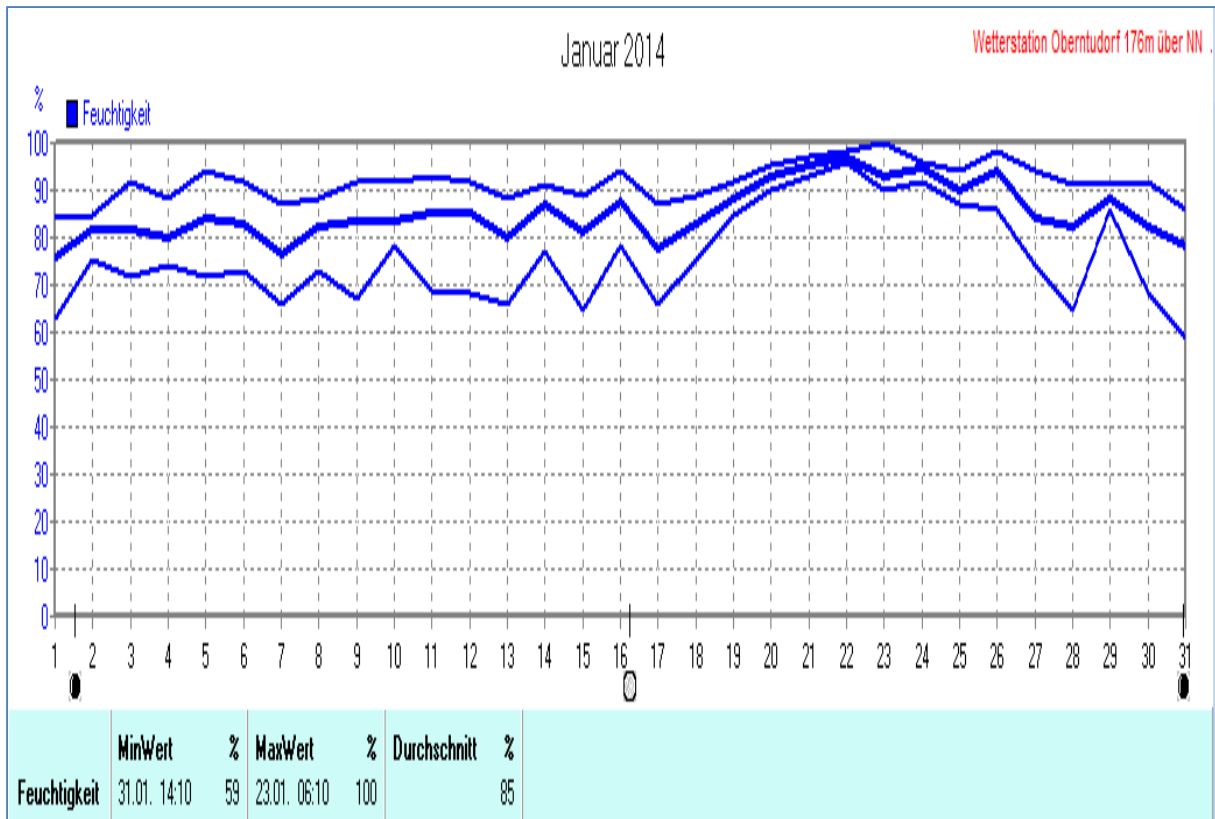
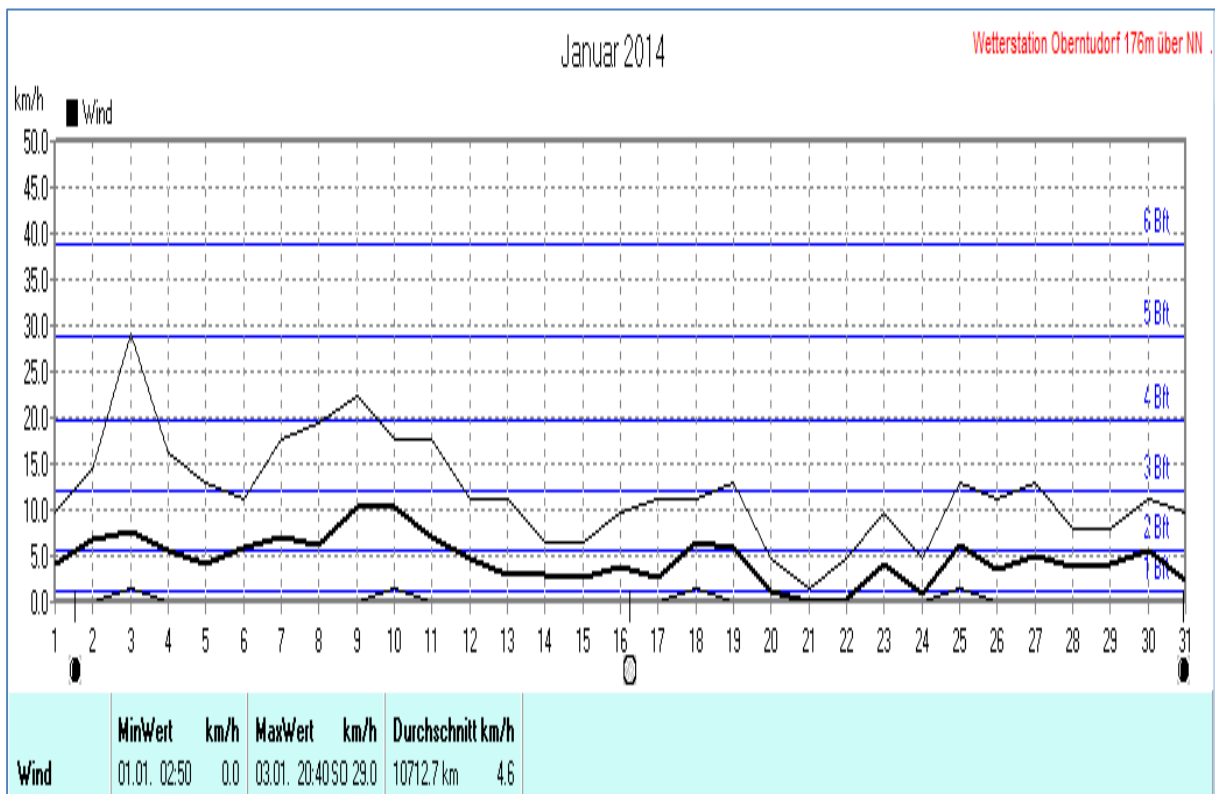
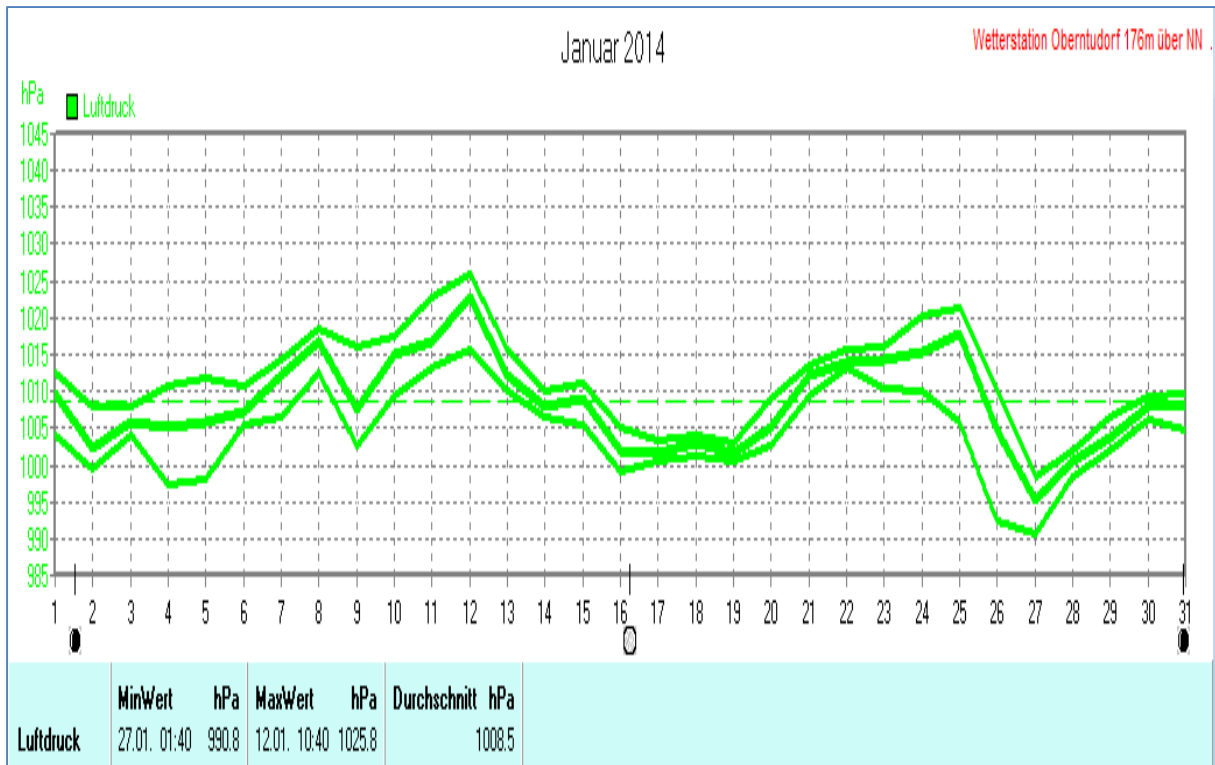


Wettertabelle und Grafiken Januar 2014 Station Oberntudorf

Wetterdaten Januar 2014 Station Oberntudorf							
Meßgröße	Minimum	Zeit	Datum	Maximum	Zeit	Datum	Durchschnitt
Lufttemperatur	-2,5 °C	00:30	30.01.2014	12,6 °C	11:10	09.01.2014	4,6 °C
Bodentemp.	-2,2 °C	21:20	29.01.2014	11,7 °C	11:10	09.01.2014	4,0 °C
Luftfeuchtigkeit	59 %	14:10	31.01.2014	100 %	06:10	23.01.2014	85 %
Luftdruck	990,8 hPa	01:40	27.01.2014	1025,8 hPa	10:40	12.01.2014	1008,5 hPa
Wind km/h				29,0 km/h	20:40	03.01.2014	4,6 km/h
Wind °				SO	20:40	03.01.2014	SO
Regen l/m ²				4,8 l/m ²	18:50	09.01.2014	#34,400 l/m ²
Evapotransp.							#13,234 l/m ²
UV-Index				0,9 UV-I	11:30	27.01.2014	0,6 UV-I
Solar				371 W/m ²	12:10	27.01.2014	29 W/m ²
Sonne h				5:40 h	16:50	28.01.2014	#62:50 h

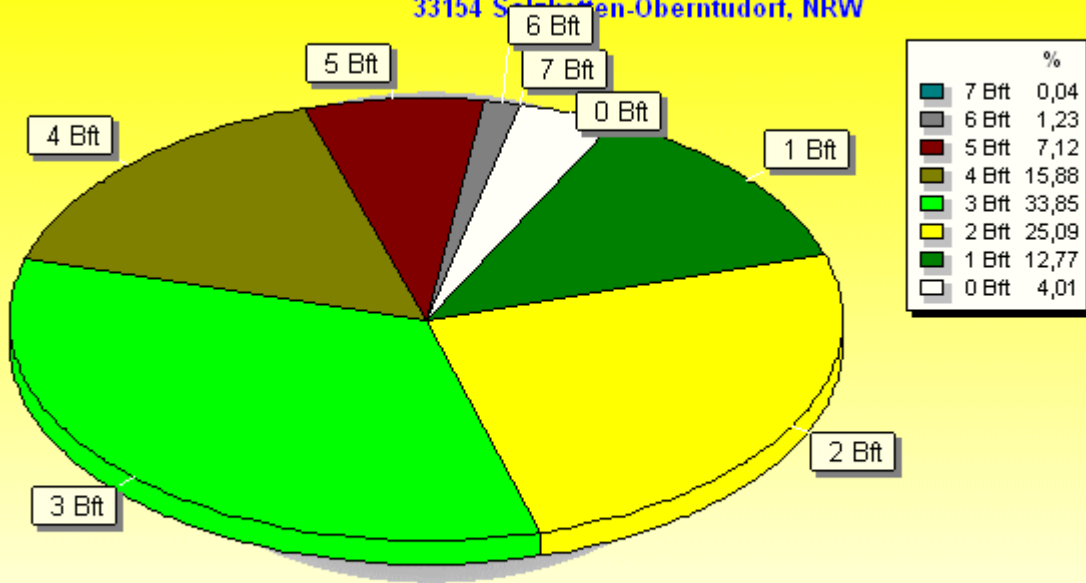






Windböen: Verteilung Windstärke Januar 2014

33154 Salzotten-Oberntudorf, NRW

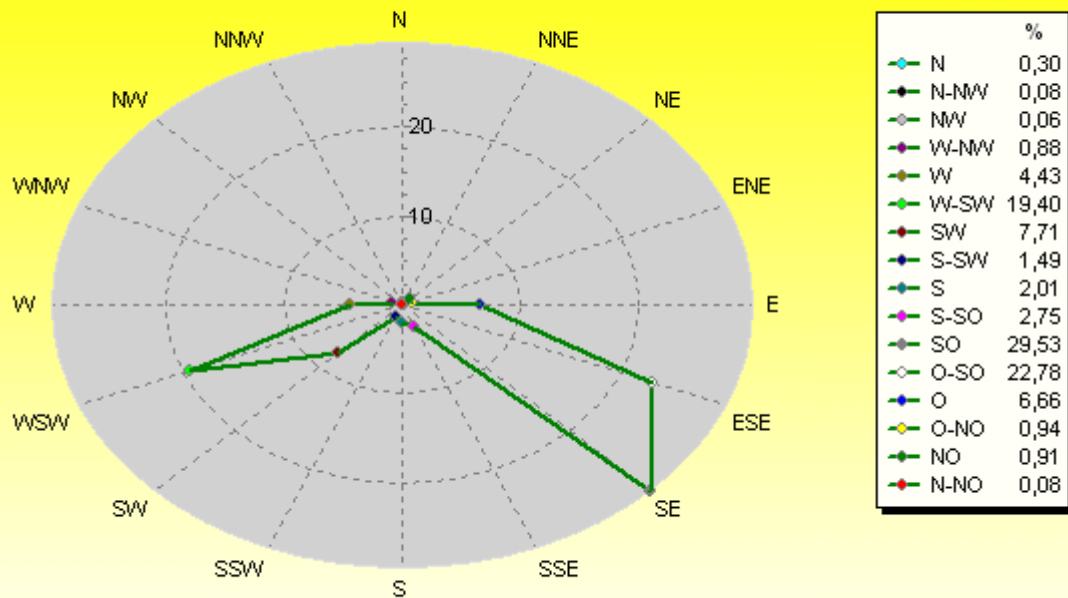


4464 Werte - Ø 14,4km/h - Max. 56,3km/h = Windböen - 10712.7 km

© WzWin32 - Wetterstation Oberntudorf 176m über NN . - © 1999-2014 Jürgen Pinger - Davis VantagePro2Plus

Verteilung Windrichtung Januar 2014

33154 Salzotten-Oberntudorf, NRW



3634 / 830 Werte -> 18,6% Windstille - Ø 4,6km/h - Max. 56,3km/h = Windböen - 10712.7 km

© WzWin32 - Wetterstation Oberntudorf 176m über NN . - © 1999-2014 Jürgen Pinger - Davis VantagePro2Plus

