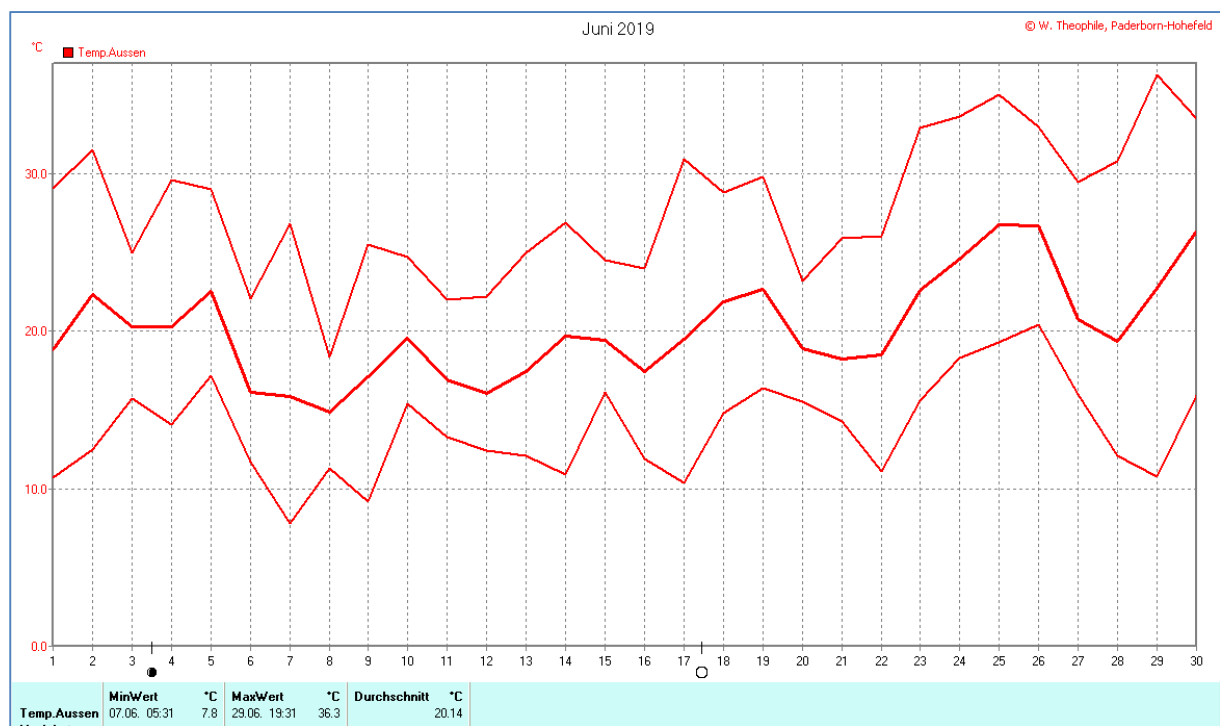
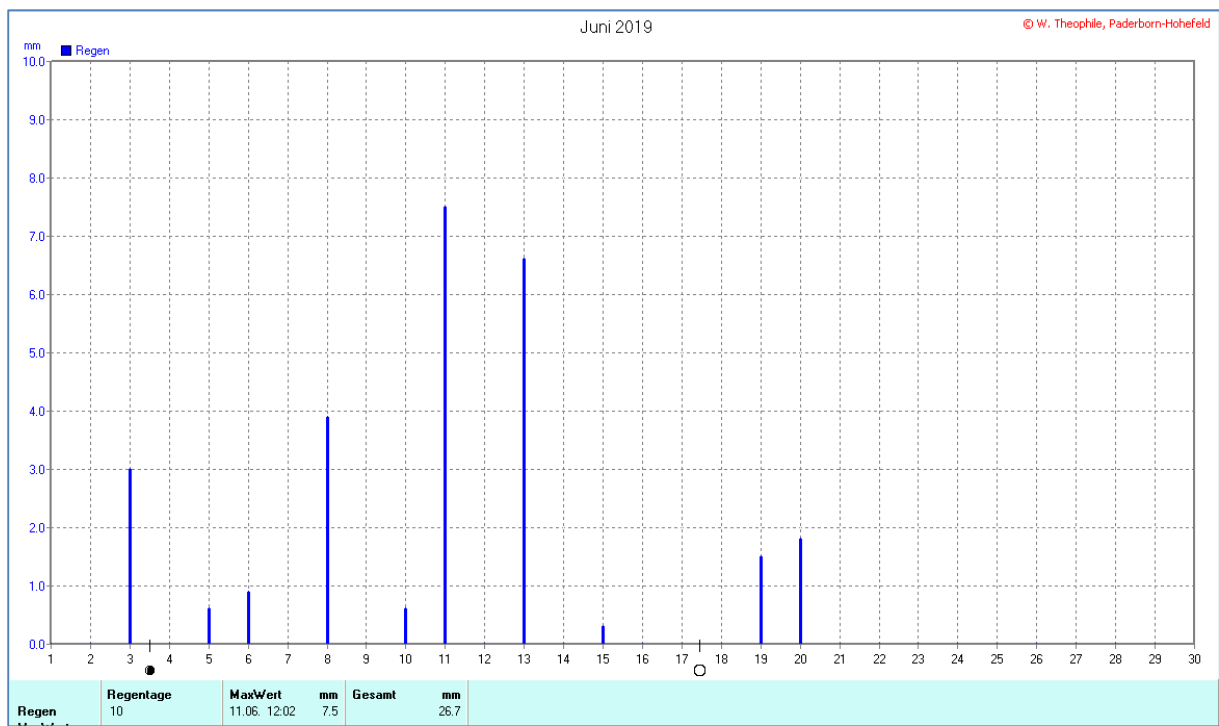
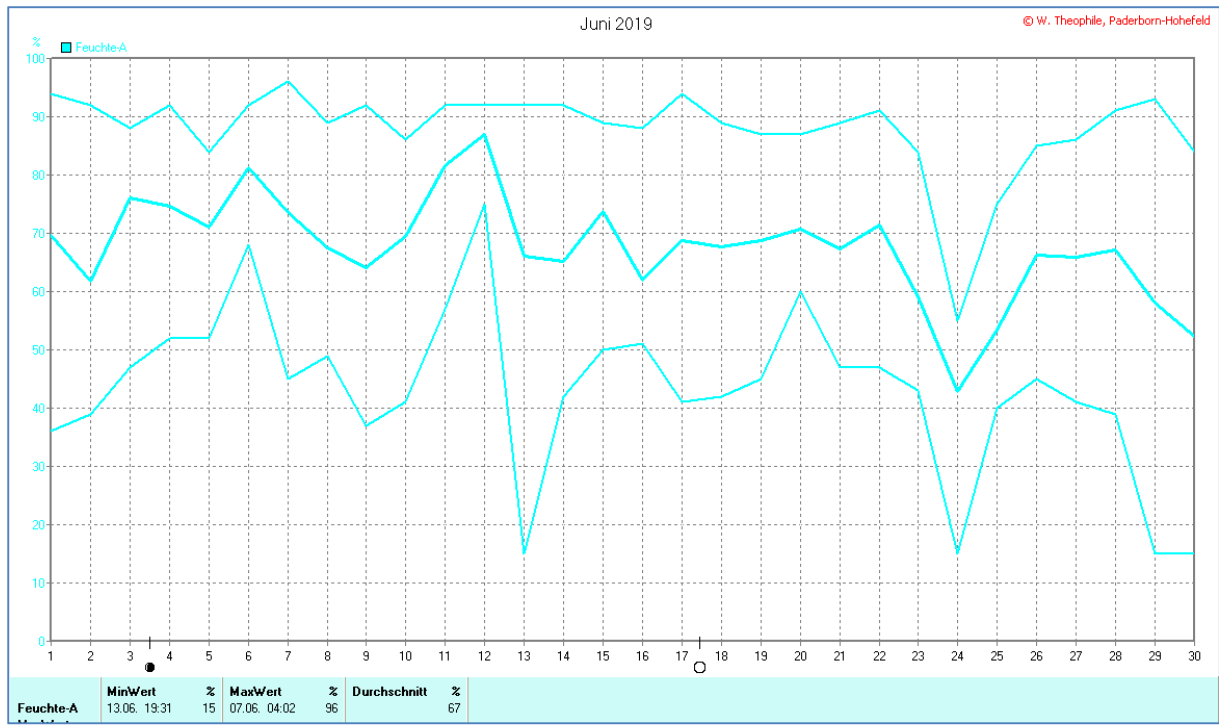
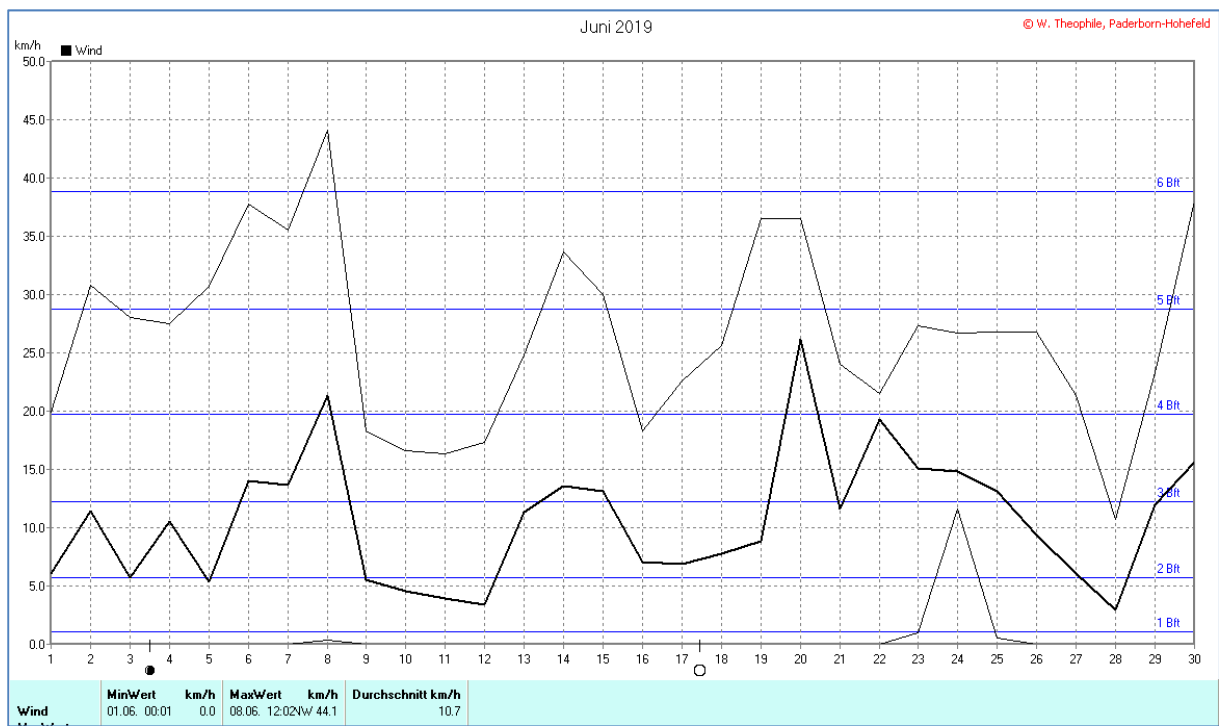
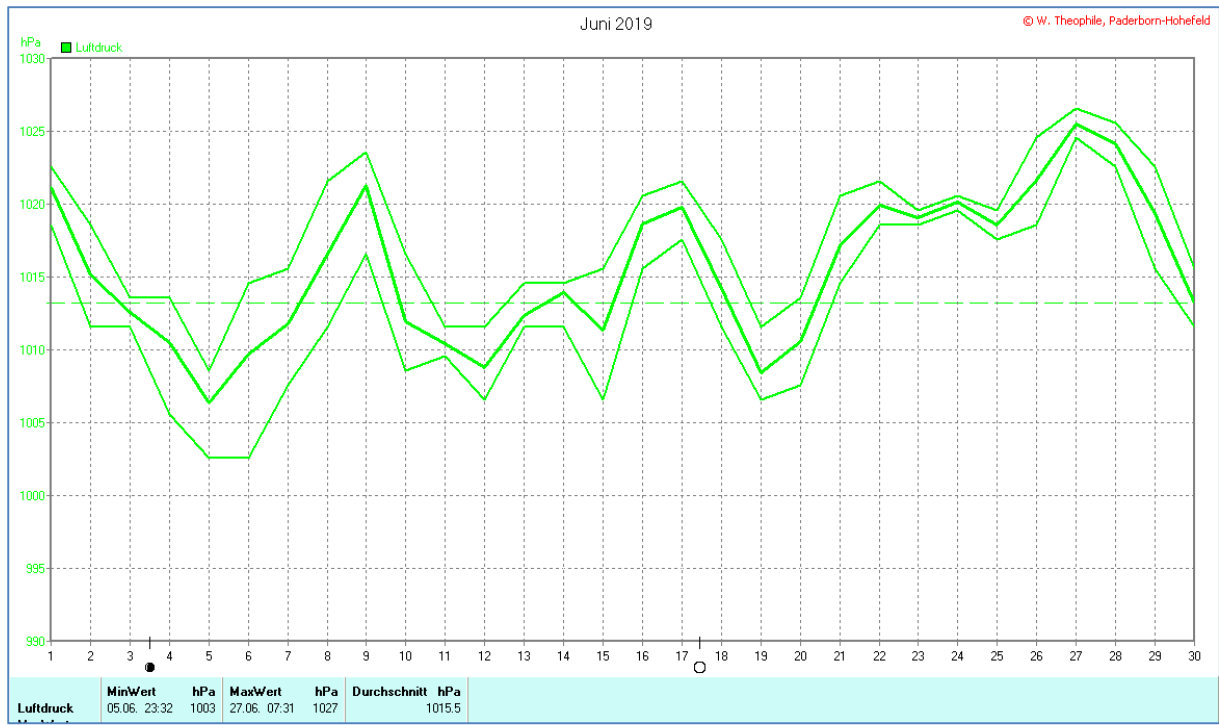


## Wettertabelle und Grafiken Juni 2019 Station PB Hohefeld (Dahl)

Wetterdaten Juni 2019 Station PB-Hohefeld (DAHL)							
© W. Theophile, Paderborn-Hohefeld							
Meßgröße	Minimum	Zeit	Datum	Maximum	Zeit	Datum	Durchschnitt
Temperatur	7,8 °C	05:31	07.06.2019	36,3 °C	19:31	29.06.2019	20,1 °C
Bodentemp.	10,3 °C	08:32	01.06.2019	24,8 °C	12:02	30.06.2019	15,7 °C
Luftfeuchte	15 %	19:31	13.06.2019	96 %	04:02	07.06.2019	67 %
Luftdruck	1003 hPa	23:32	05.06.2019	1027 hPa	07:31	27.06.2019	1015 hPa
Wind km/h				44,1 km/h	12:02	08.06.2019	10,7 km/h
Wind °				N-NW	12:02	08.06.2019	SW
Regen l/m <sup>2</sup>				7,5 mm	12:02	11.06.2019	#26,700 mm
Solar				545 W/m <sup>2</sup>	15:02	08.06.2019	68 W/m <sup>2</sup>
Sonne h				5,48 h	20:31	02.06.2019	#61:24 h

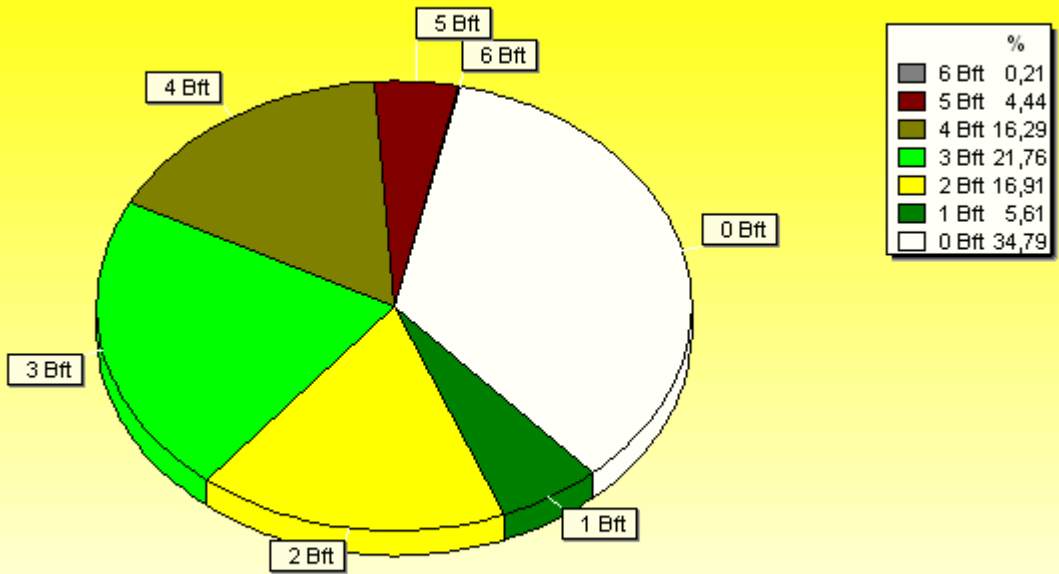






# Verteilung Windstärke Juni 2019

## Paderborn-Hohefeld

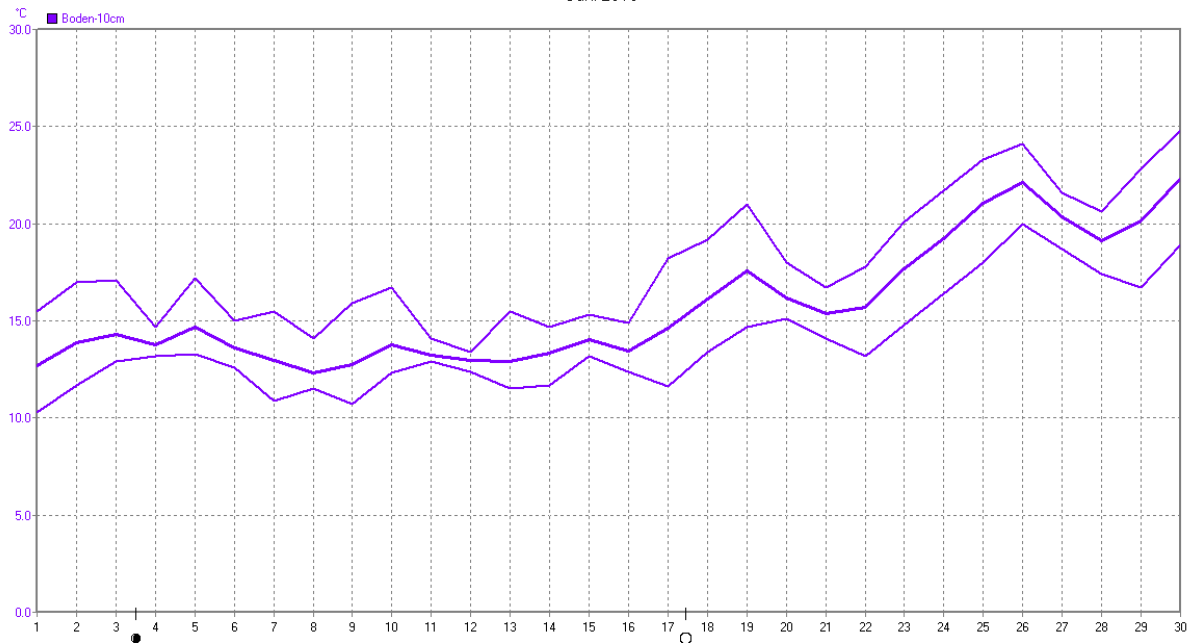


1443 Werte - Ø 10,7km/h - Max. 44,1km/h

© WzWin32

### June 2019

© W. Theophile, Paderborn-Hohefeld



	MinWert	°C	MaxWert	°C	Durchschnitt	°C
Boden-10cm	01.06. 08:32	10.3	30.06. 12:02	24.8		15.74

