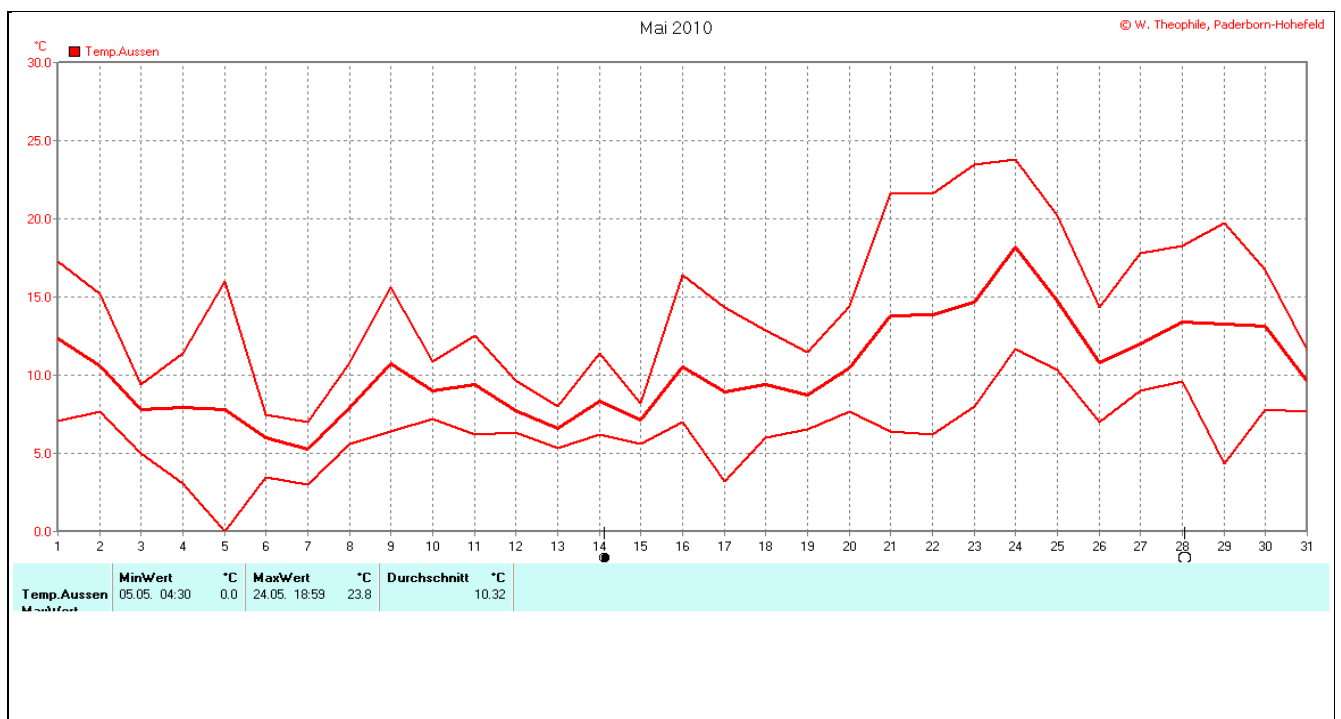
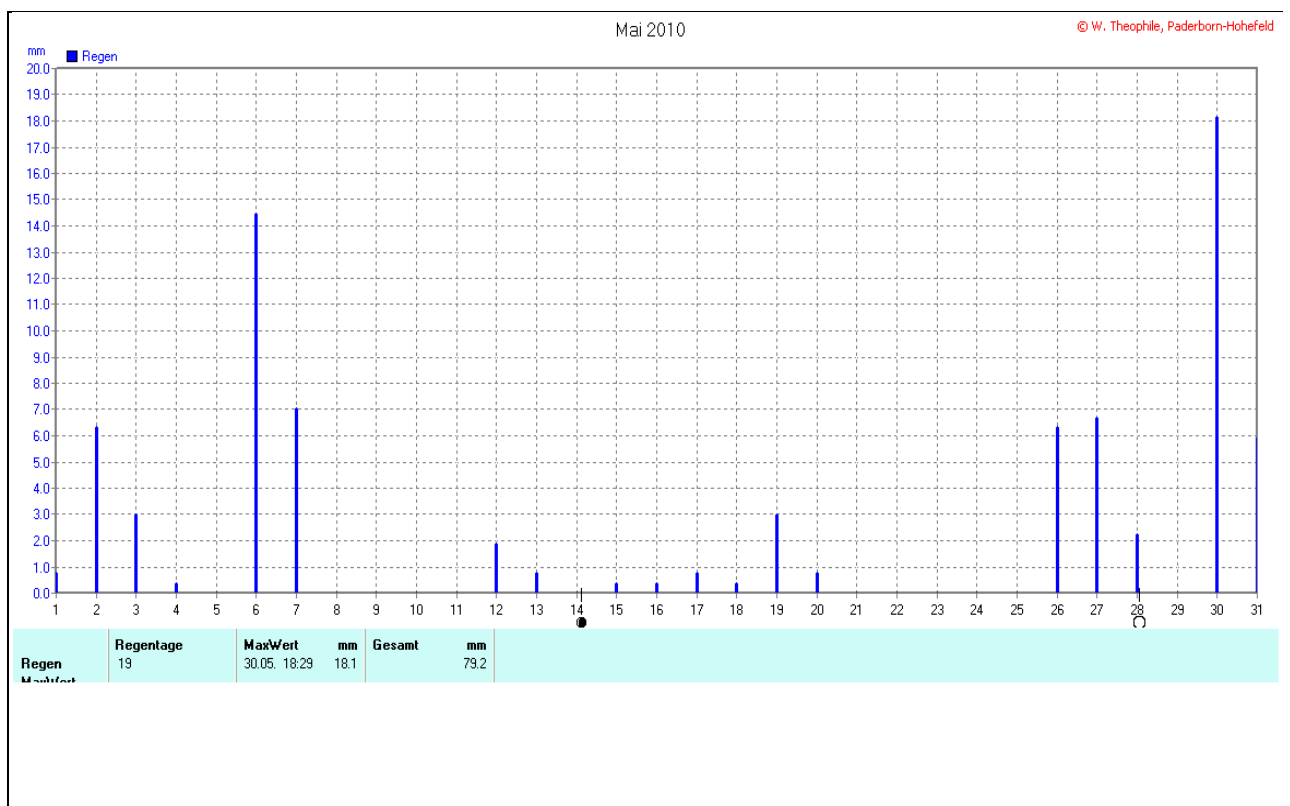
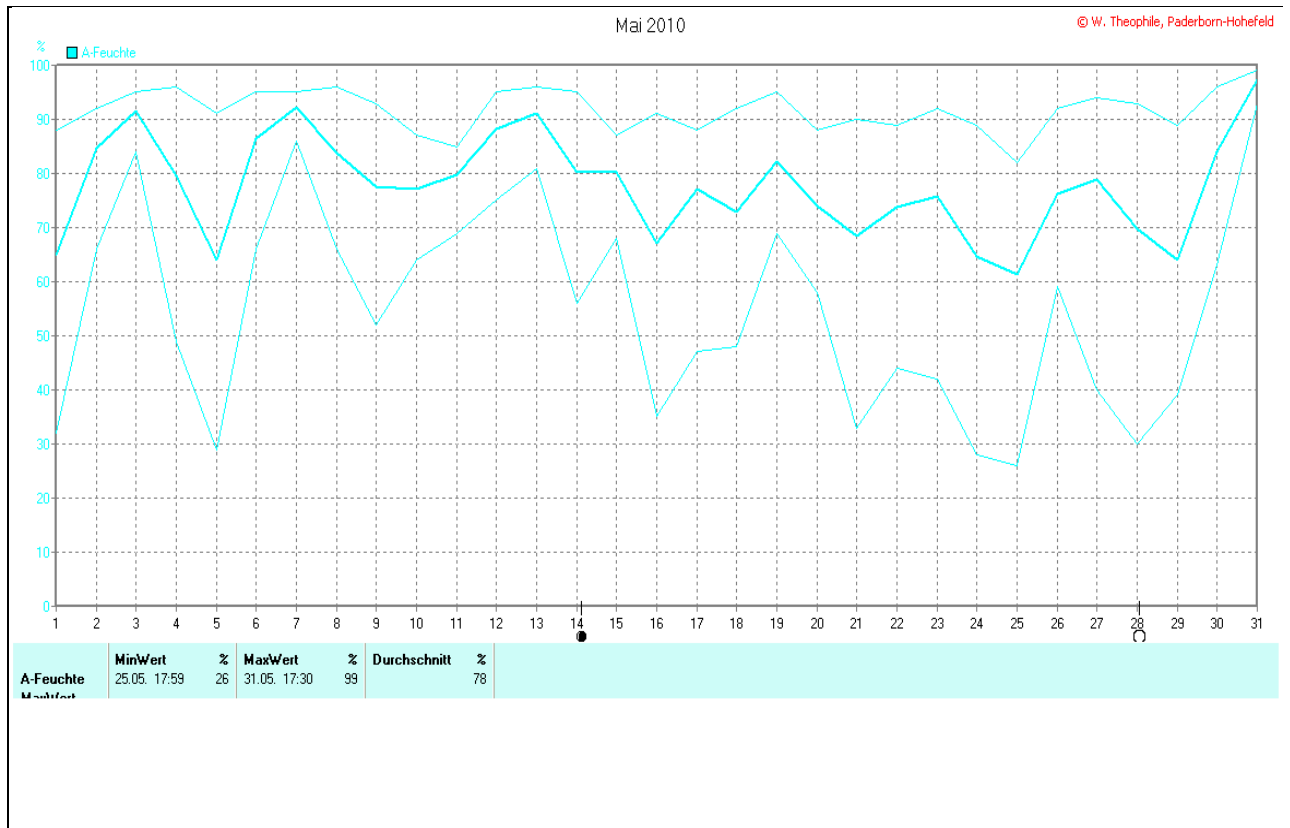
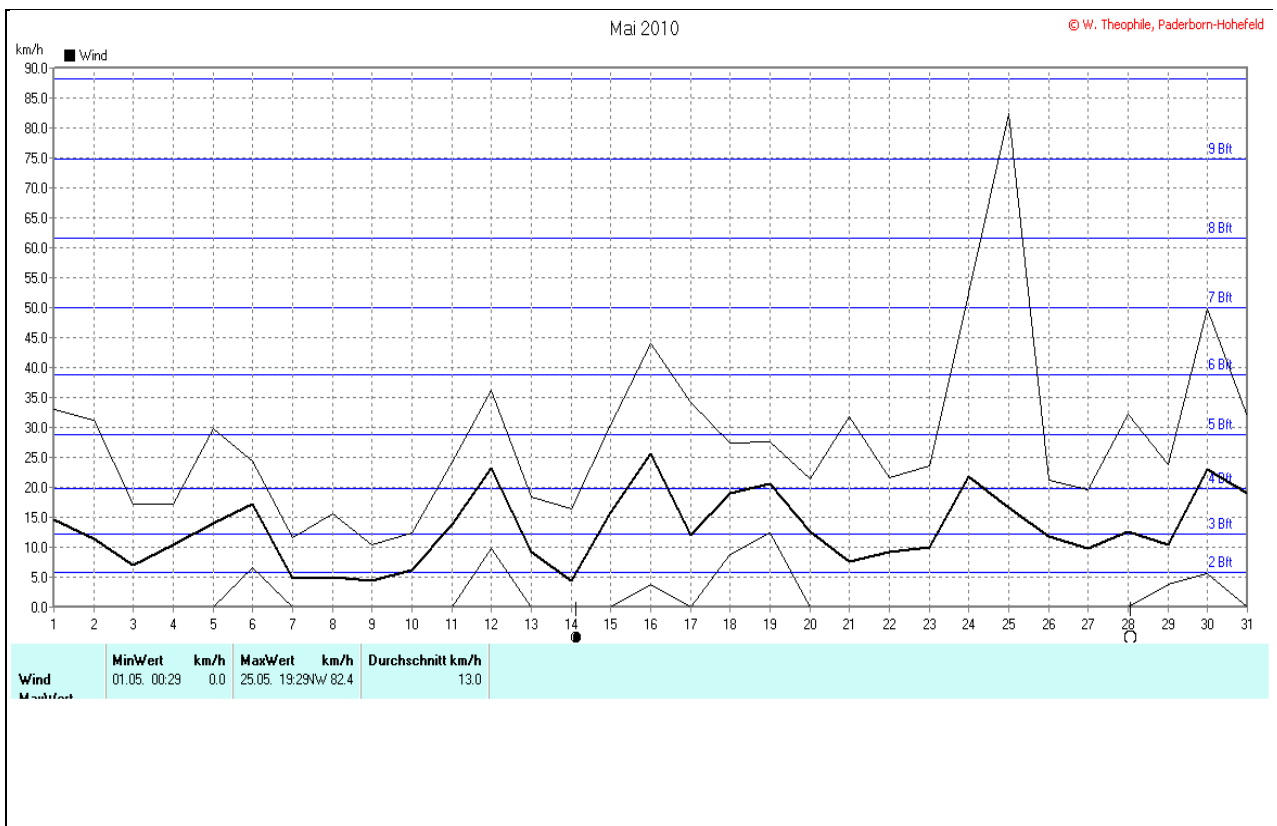
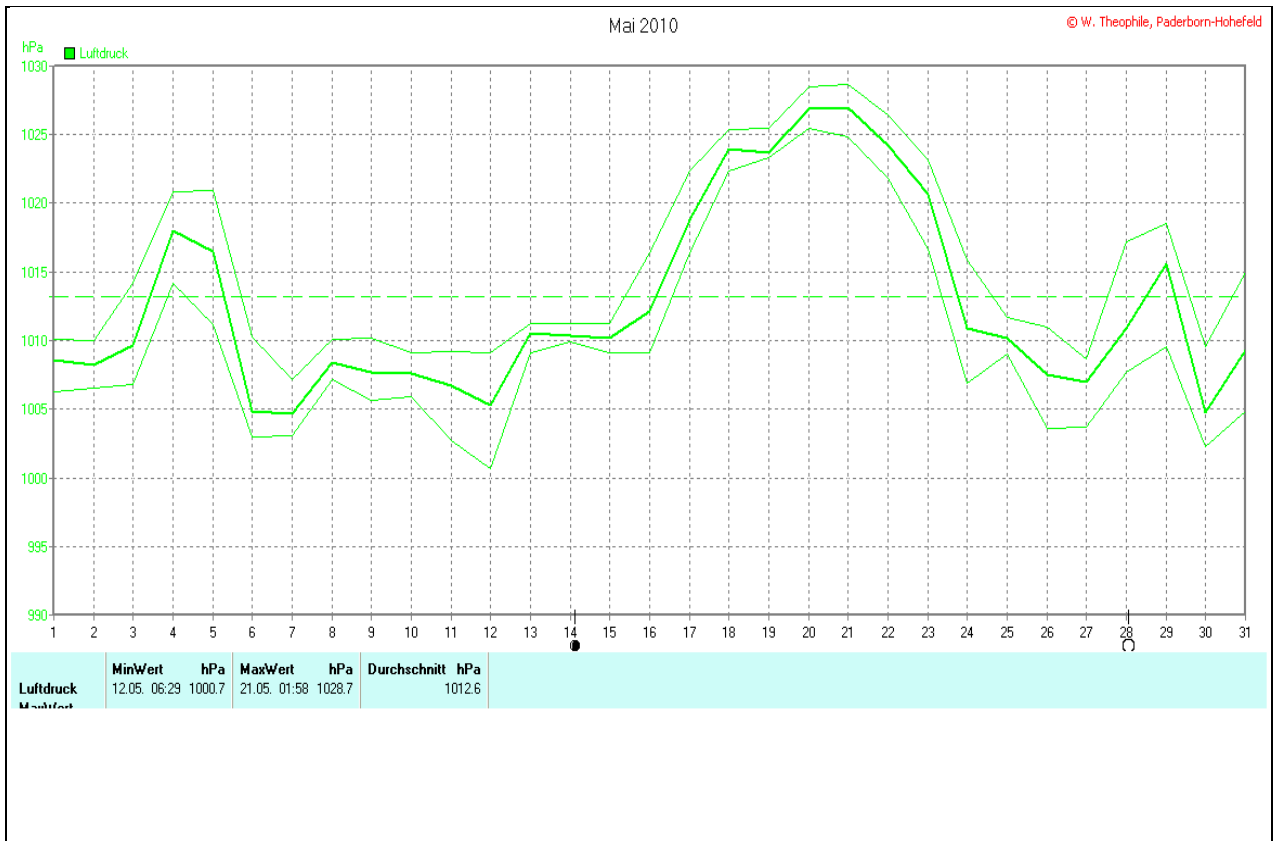


Wettertabelle und Grafiken Mai 2010 Station PB-Hohefeld (Dahl)

Wetterdaten Mai 2010 Station PB-Hohefeld (Dahl)							
Meßgröße	Minimum	Zeit	Datum	Maximum	Zeit	Datum	Durchschnitt
Ausstemperatur	0,0 °C	04:30	05.05.2010	23,8 °C	18:59	24.05.2010	10,3 °C
Bodentemperatur +10cm	3,2 °C	04:30	05.05.2010	19,6 °C	17:29	24.05.2010	10,0 °C
Luftfeuchte Aussen	26%	17:59	25.05.2010	99%	17:30	31.05.2010	78%
Luftdruck	1000,7 hPa	06:29	12.05.2010	1028,7 hPa	01:58	21.05.2010	1012,6 hPa
Windgeschwindigkeit				82,4 km/h	19:29	25.05.2010	13,0 km/h
Windrichtung				W-NW	19:29	25.05.2010	W-NW
Regenmenge				18,1 mm	18:29	30.05.2010	#79,180 mm
Helligkeit				115 klux	13:29	27.05.2010	29,4 klux
Solarstrahlung				747 W/m ²	13:29	27.05.2010	166 W/m ²
Sonnenschein-Zeit				11,50 h	19:29	24.05.2010	#178:07 h

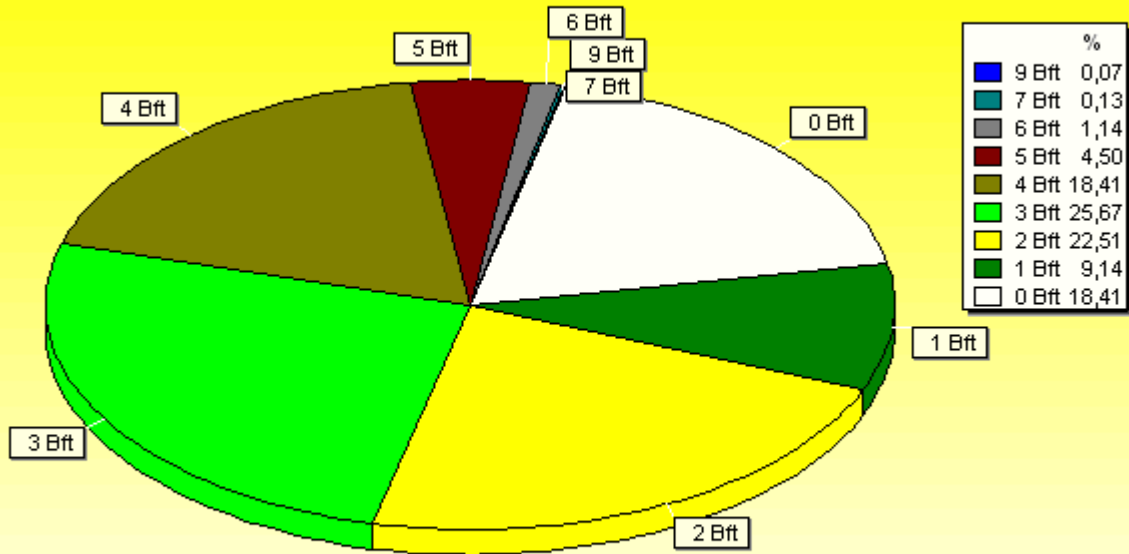






Verteilung Windstärke Mai 2010

Paderborn-Hohefeld

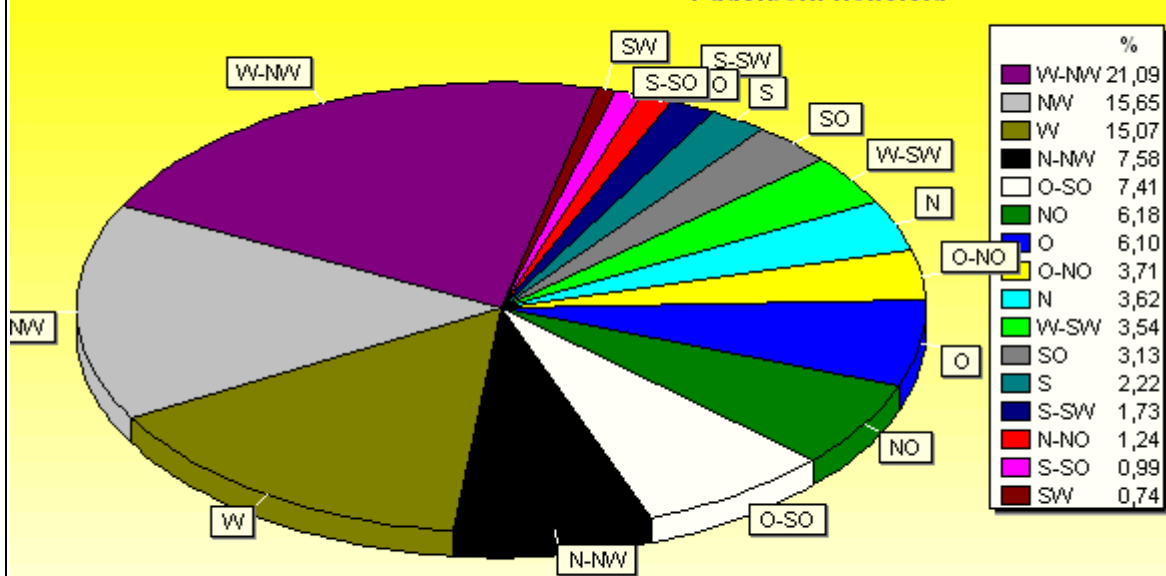


1488 Werte - Ø 13,0km/h - Max. 82,4km/h

© WsWin32

Verteilung Windrichtung Mai 2010

Paderborn-Hohefeld

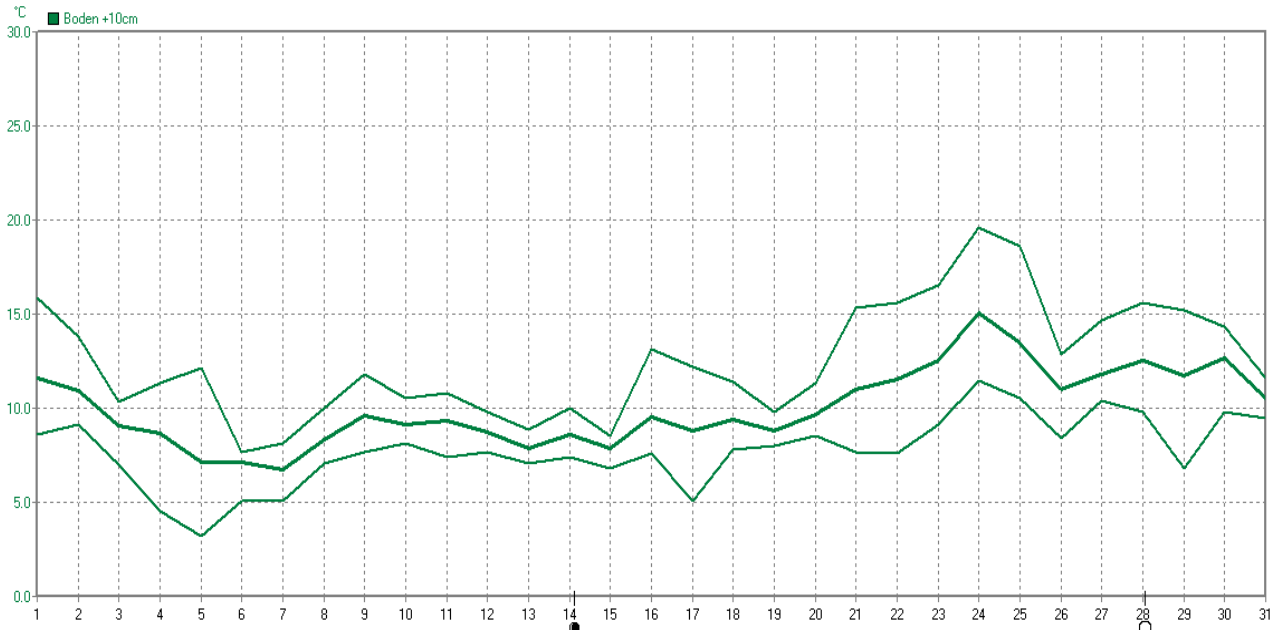


1214 / 274 Werte -> 18.4% Windstille - Ø 13,0km/h - Max. 82,4km/h

© WsWin32

Mai 2010

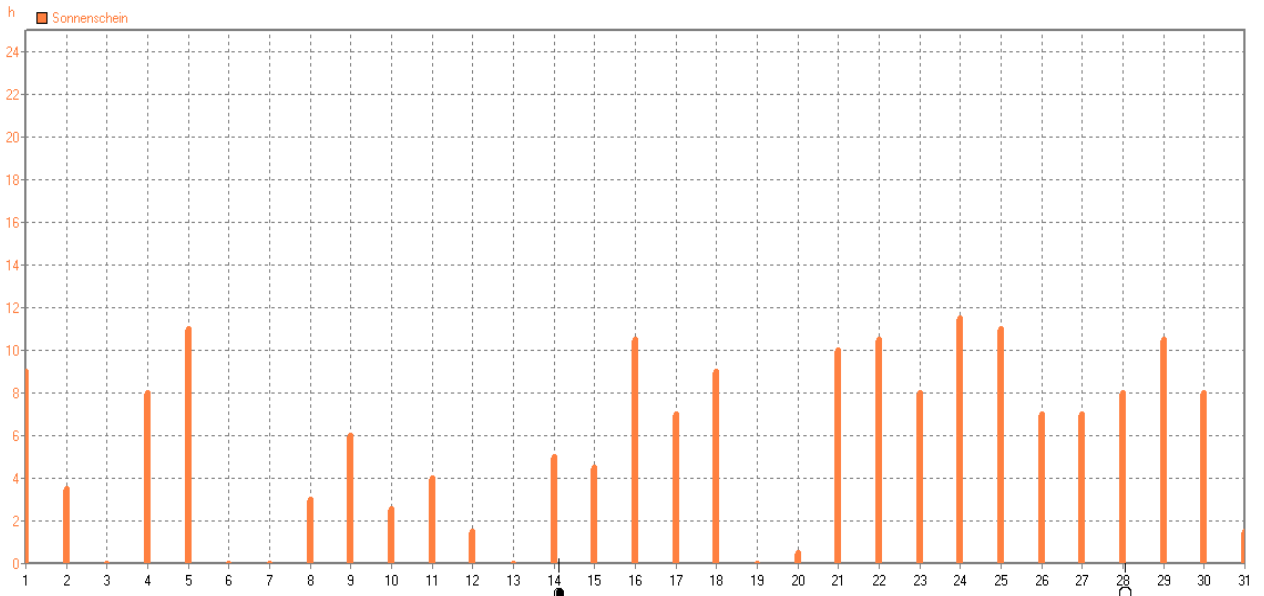
© W. Theophile, Paderborn-Hohefeld



Boden +10cm	MinWert	°C	MaxWert	°C	Durchschnitt	°C
MaxWert	05.05. 04:30	3.2	24.05. 17:29	19.6		10.03

Mai 2010

© W. Theophile, Paderborn-Hohefeld



Sonnenschein	MaxWert	h	Durchschnitt	h
MaxWert	24.05. 19:29	11.50	178:07 h	5.7