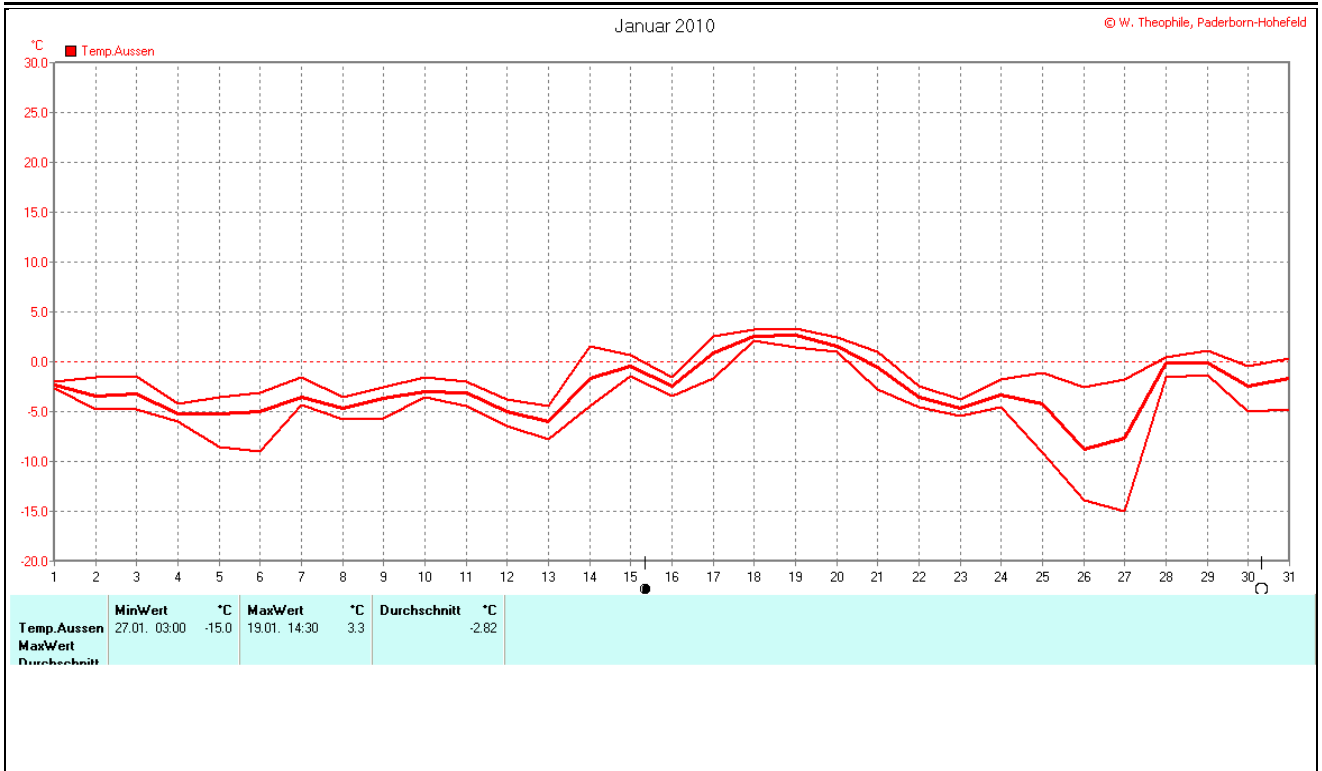
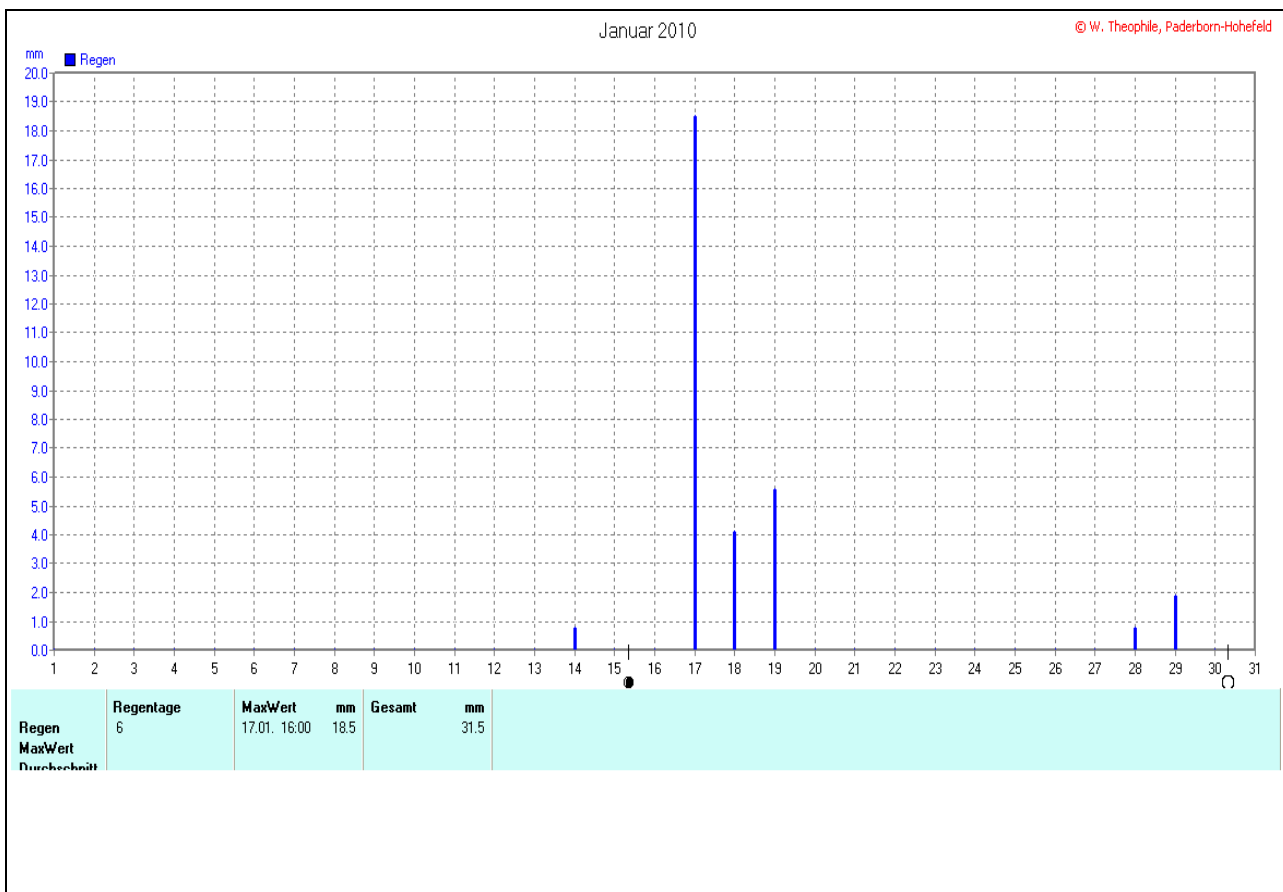
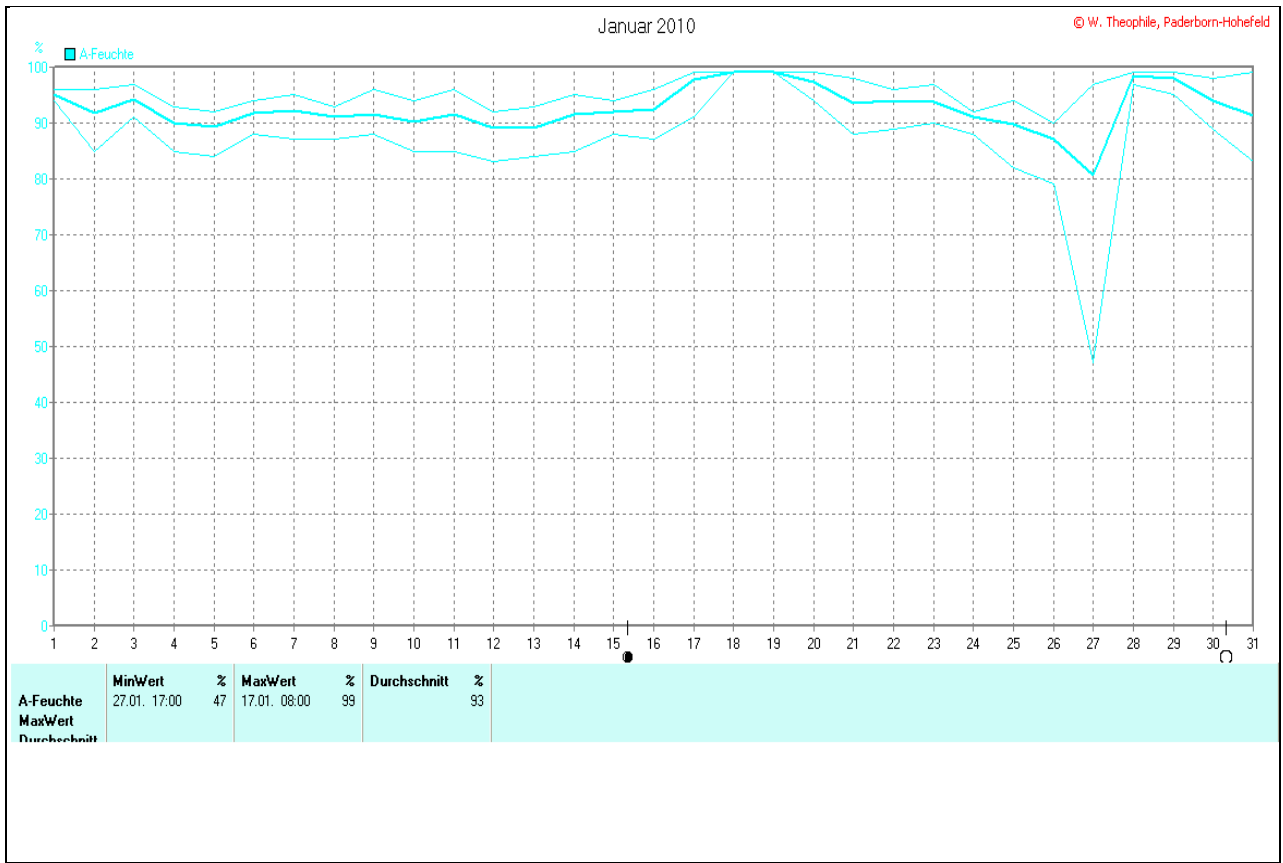


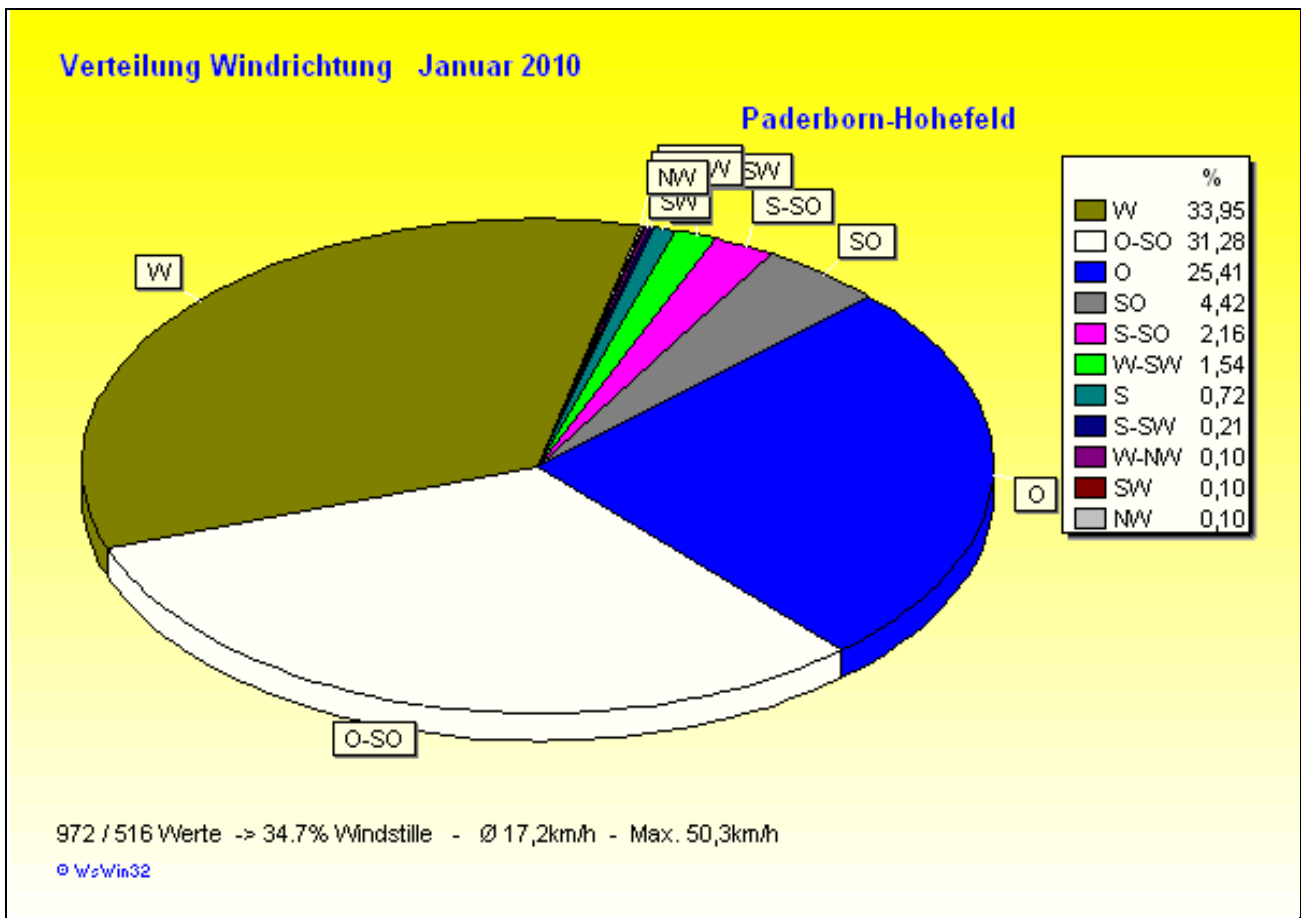
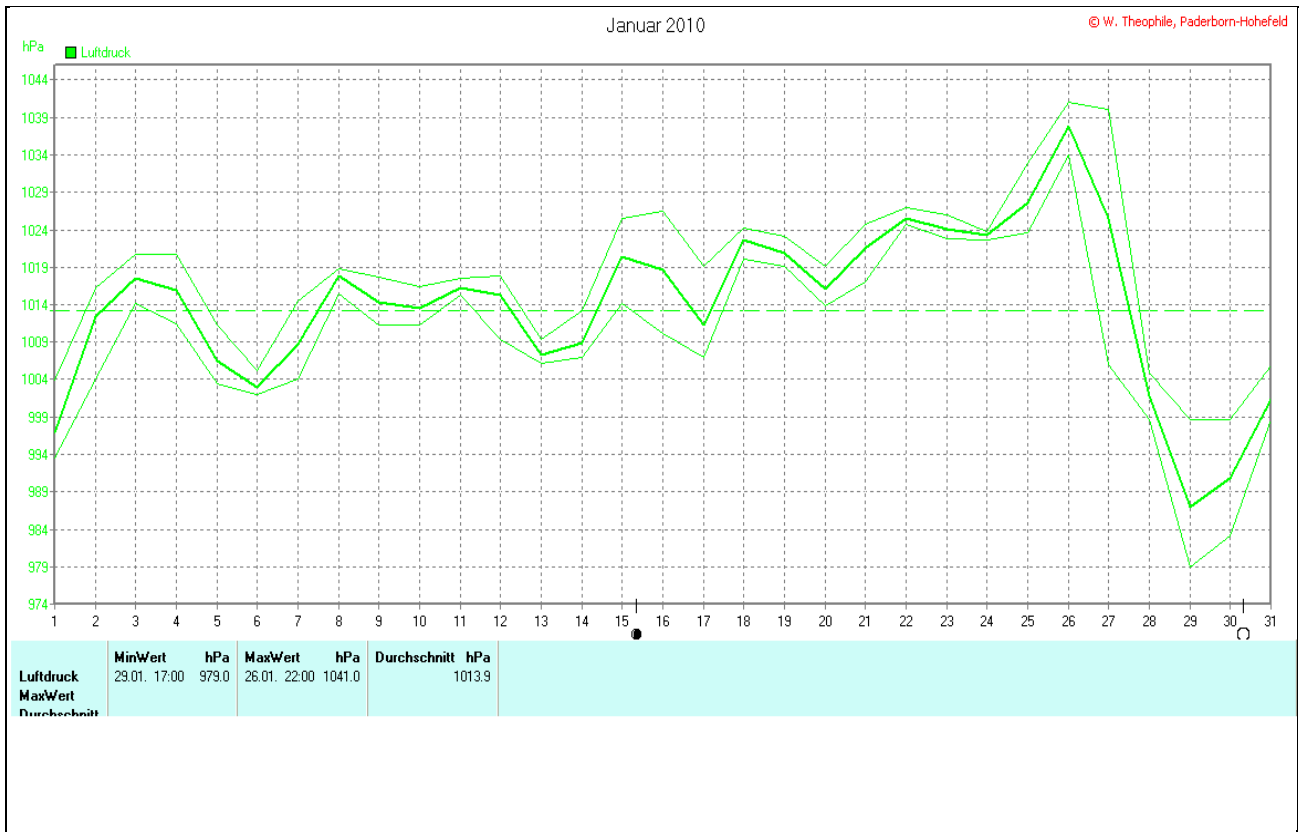
Wettertabelle und Grafiken Januar 2010 Station PB-Hohefeld

Wetterdaten Januar 2010 Station PB-Hohefeld

Meßgröße	Minimum	Zeit	Datum	Maximum	Zeit	Datum	Durchschnitt
Ausstemperatur	-15,0 °C	03:00	27.01.2010	3,3 °C	14:30	19.01.2010	-2,8 °C
Bodentemperatur +10cm	-9,9 °C	00:00	27.01.2010	8,6 °C	03:00	21.01.2010	-2,5 °C
Luftfeuchte Aussen	47%	17:00	27.01.2010	99%	08:00	17.01.2010	93%
Luftdruck	979,0 hPa	17:00	29.01.2010	1041,0 hPa	22:00	26.01.2010	1013,9 hPa
Windgeschwindigkeit				50,3 km/h	13:00	16.01.2010	17,2 km/h
Windrichtung				O-SO	13:00	16.01.2010	W
Regenmenge				18,5 mm	16:00	17.01.2010	#31,450 mm
Helligkeit				47,0 klux	13:00	20.01.2010	9,2 klux
Solarstrahlung				120 W/m ²	13:00	20.01.2010	25 W/m ²
Sonnenschein-Zeit				3,50 h	14:30	26.01.2010	#10:58 h

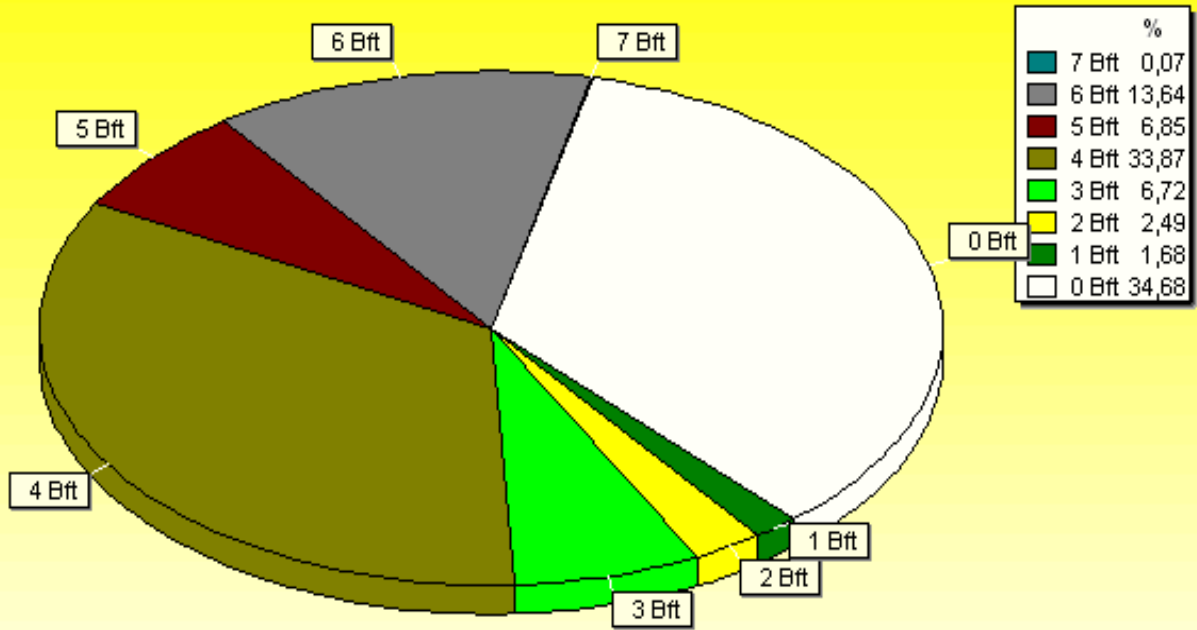






Verteilung Windstärke Januar 2010

Paderborn-Hohefeld

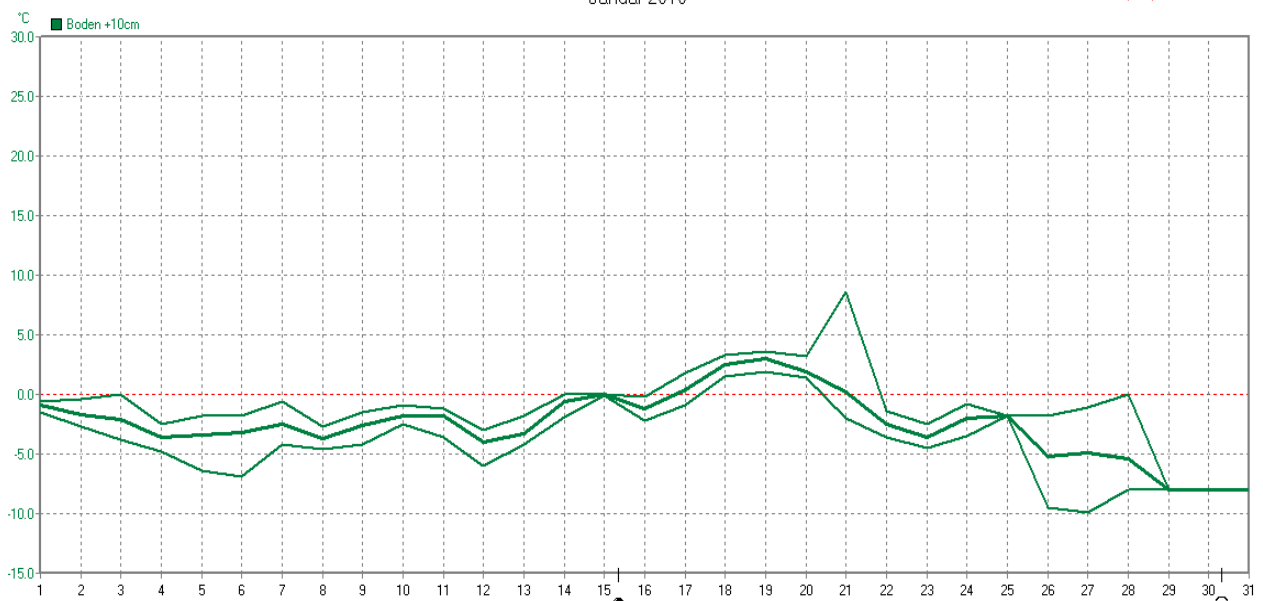


1488 Werte - Ø 17,2km/h - Max. 50,3km/h

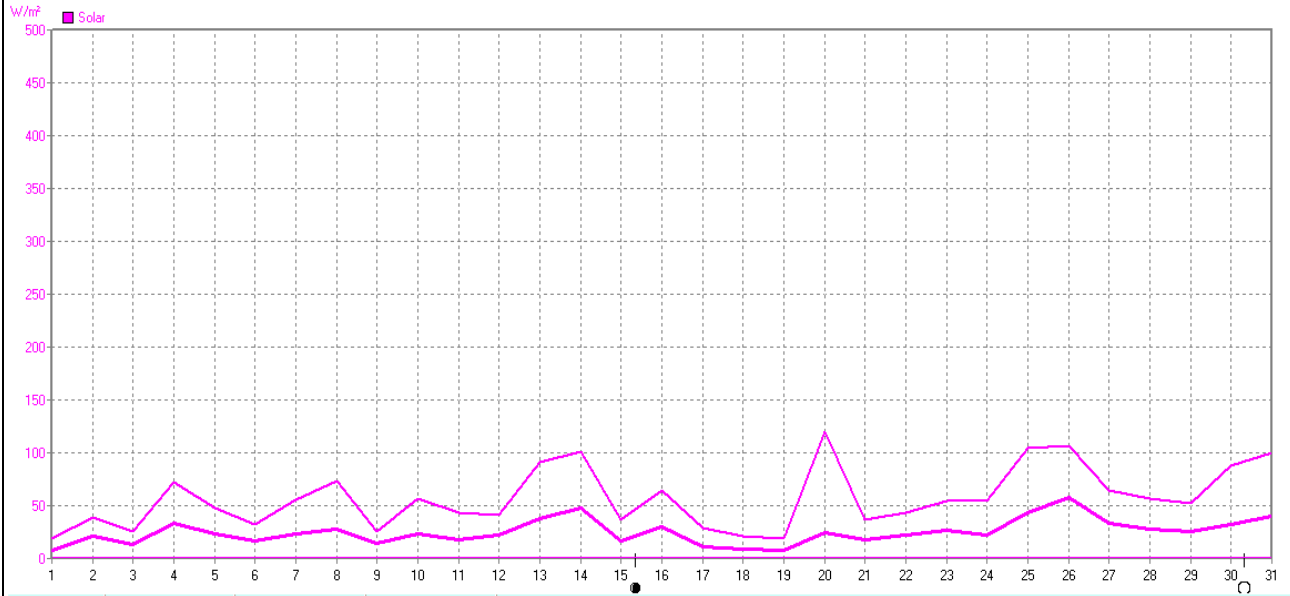
© W'sWin32

Januar 2010

© W. Theophile, Paderborn-Hohefeld



	MinWert	°C	MaxWert	°C	Durchschnitt	°C
Boden +10cm	27.01. 00:00	-9.9	21.01. 03:00	8.6		-2.51
MaxWert						
Durchschnitt						



Solar	MaxWert	20.01. 13:00	W/m²	120	Durchschnitt	10:58 h	W/m²	25
-------	---------	--------------	------	-----	--------------	---------	------	----