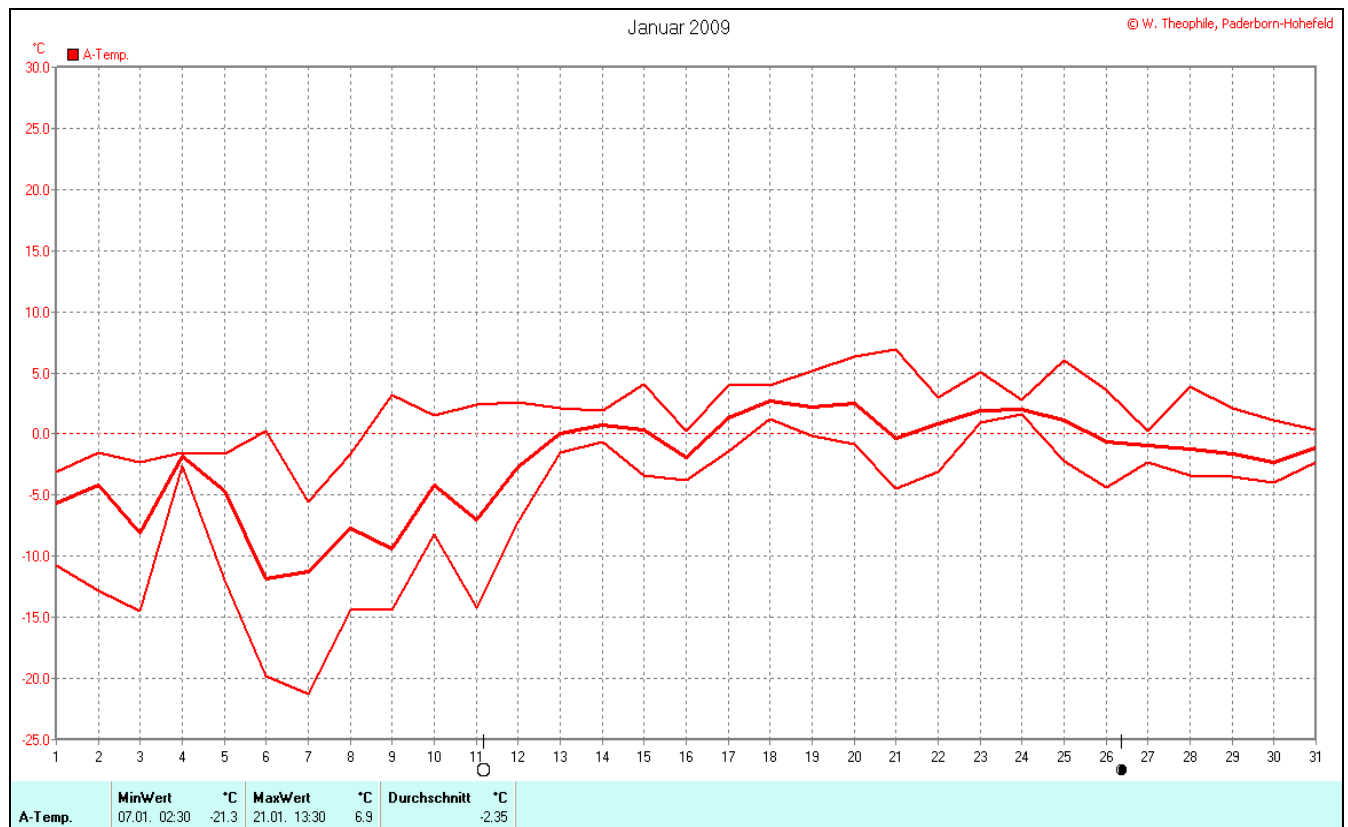
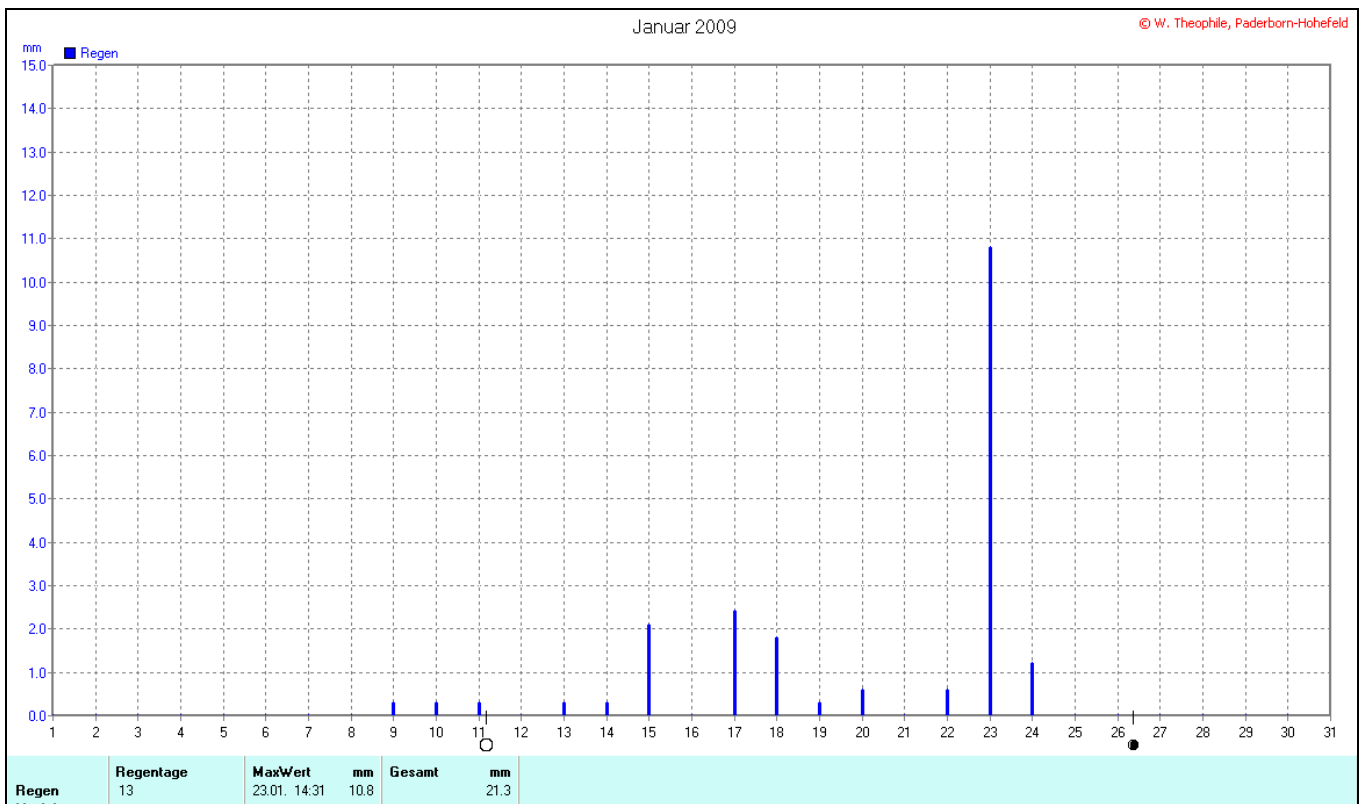
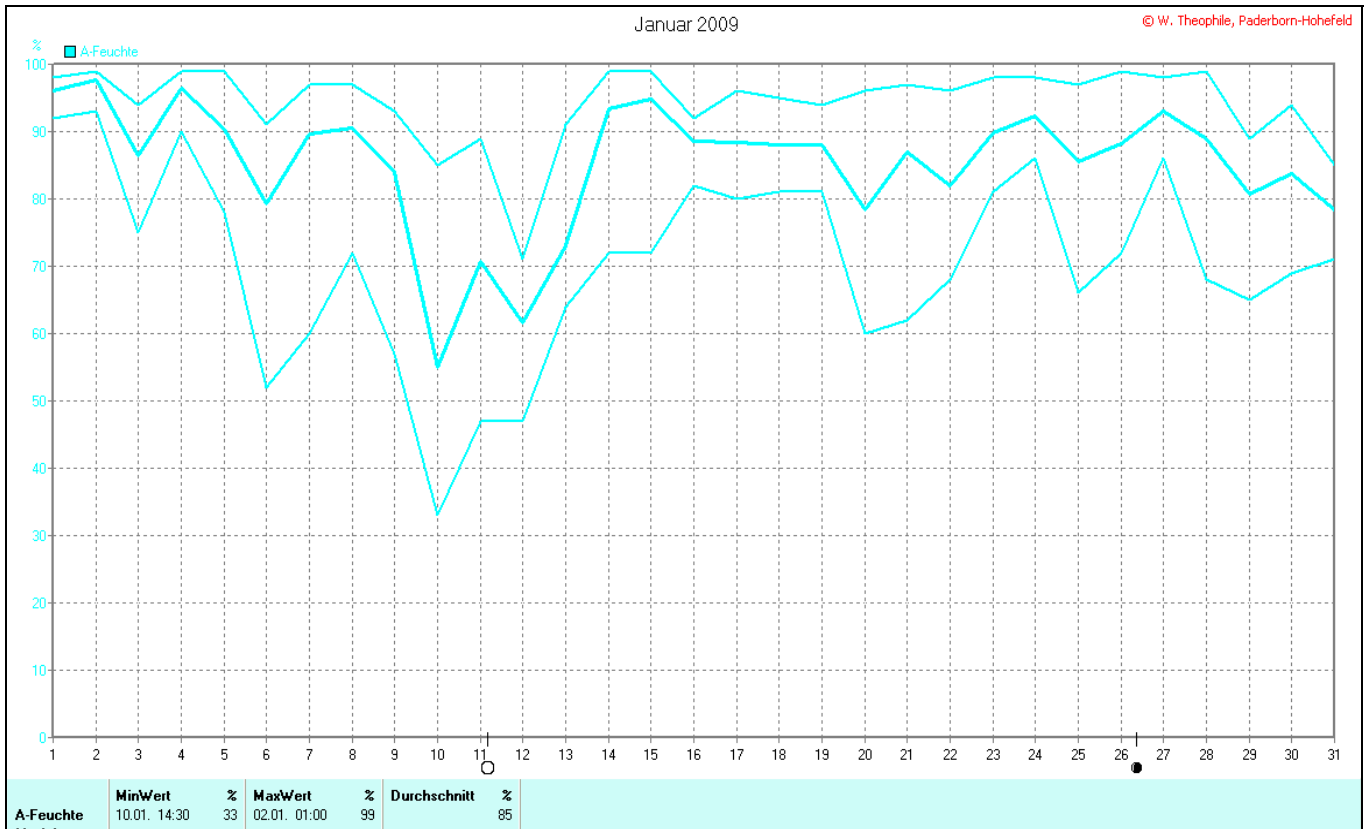


Wettergrafiken und Tabelle Januar 2009 Station PB-Hohefeld (Dahl)

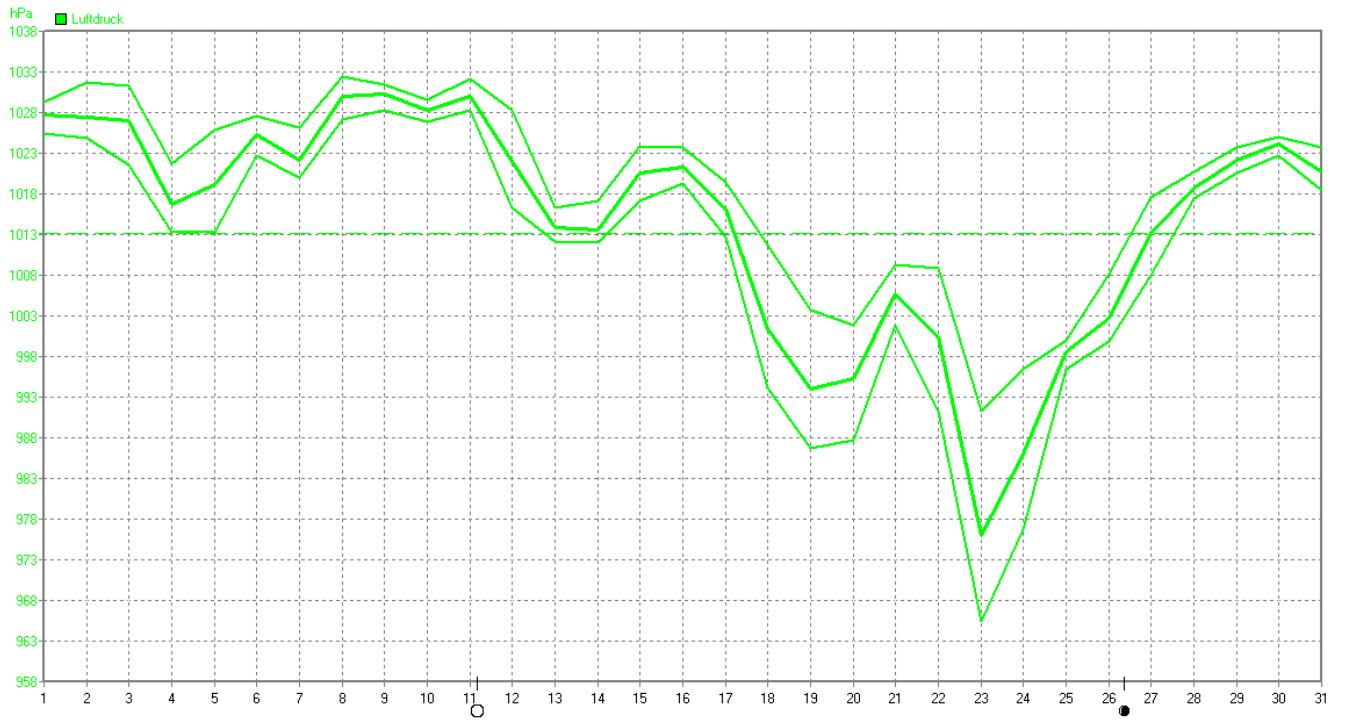
Klimadaten Wetterstation Dahl Hohefeld			
Standortkoordinaten:		geogr. 08°51'32' 'O ; 51°41'39" N	
		250 m ü. NN	
Monatswerte:		Jan. 09	
Temperatur:	-2,4	Tage mit Schneedecke:	12
Lj.Mittel:(Lipp.1961-90):	0,9	Eistage(Max<0,0°C):	8
Abweichung:	-1,5	Frosttage(MIN<0,0°C):	19
Absolutes Max.:	6,9	Sommertage(Max>=25°C):	0
Absolutes Min.:	21,3	Heiße Tage(Max>=30°C):	0
Bodentemperatur +05cm:			
Mittel: -1,1		Max: 8,6	Min: -14,6
Niederschlag:	21,3	Luftdruck(Meereshöhe):hPa	
Max.Tag:	10,8	Absolutes Max.:	1.032,0
Lj.Mittel(Lipp. 1961-90):	79,6	Absolutes Min.:	965,0
Mittel relative Feuchte:	85,0	Mittel:	1.014,5
Max. Windbö:	61,1	Sonne h:	54,02
Mittlere Wind:	17,3	Lj.Lipp.(1961-90):	43,7





Januar 2009

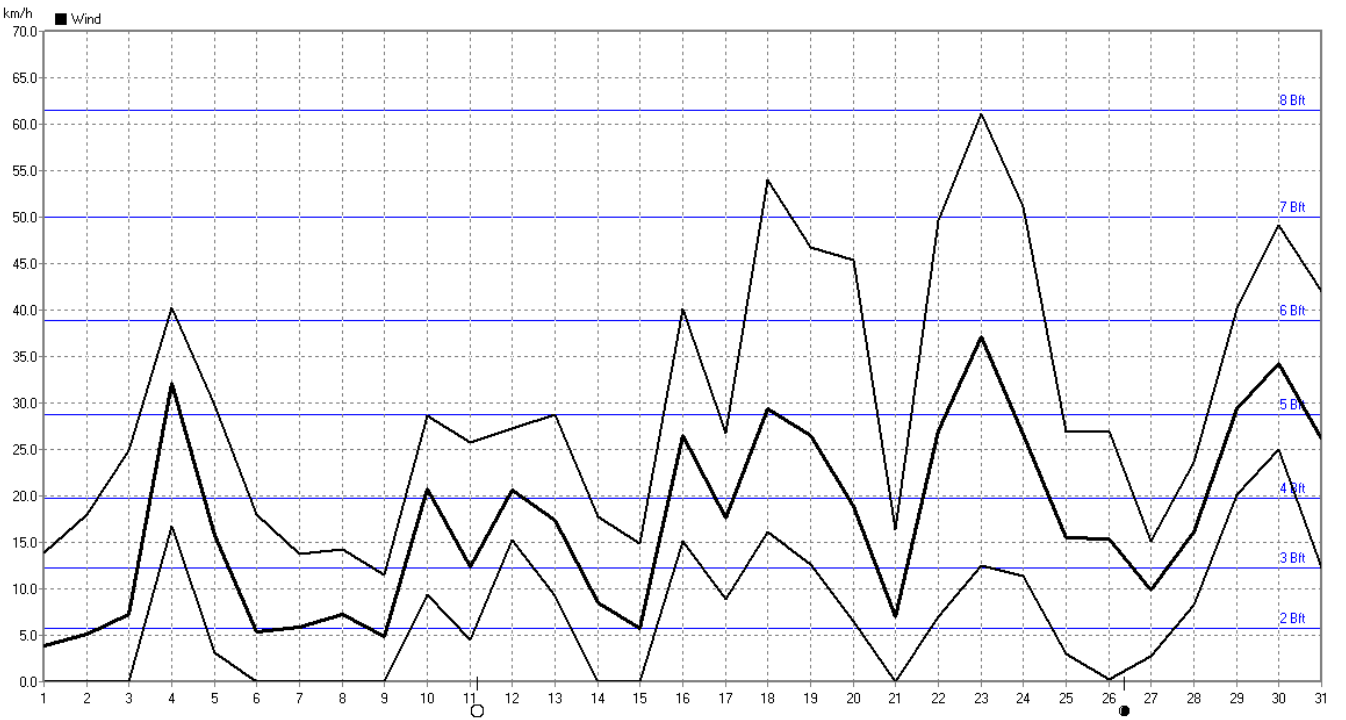
© W. Theophile, Paderborn-Hohefeld



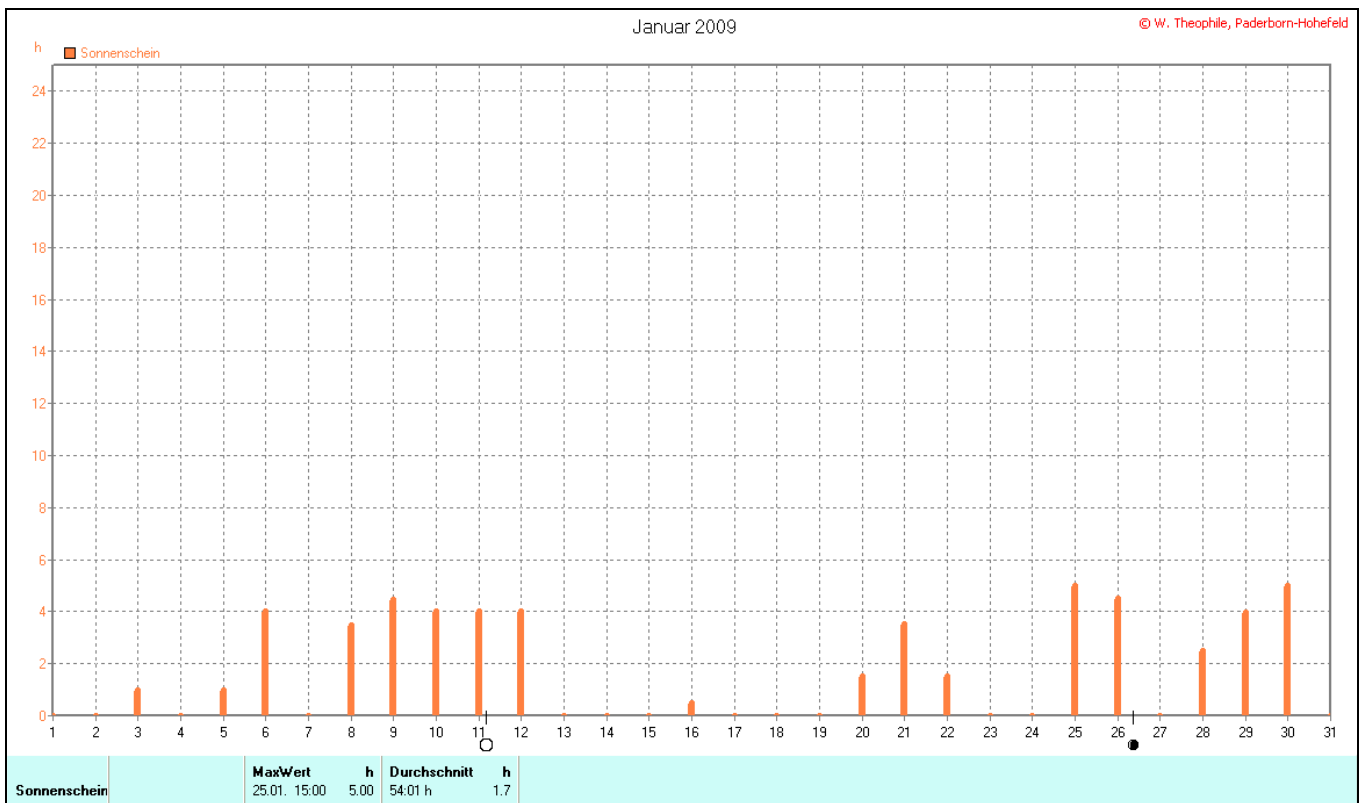
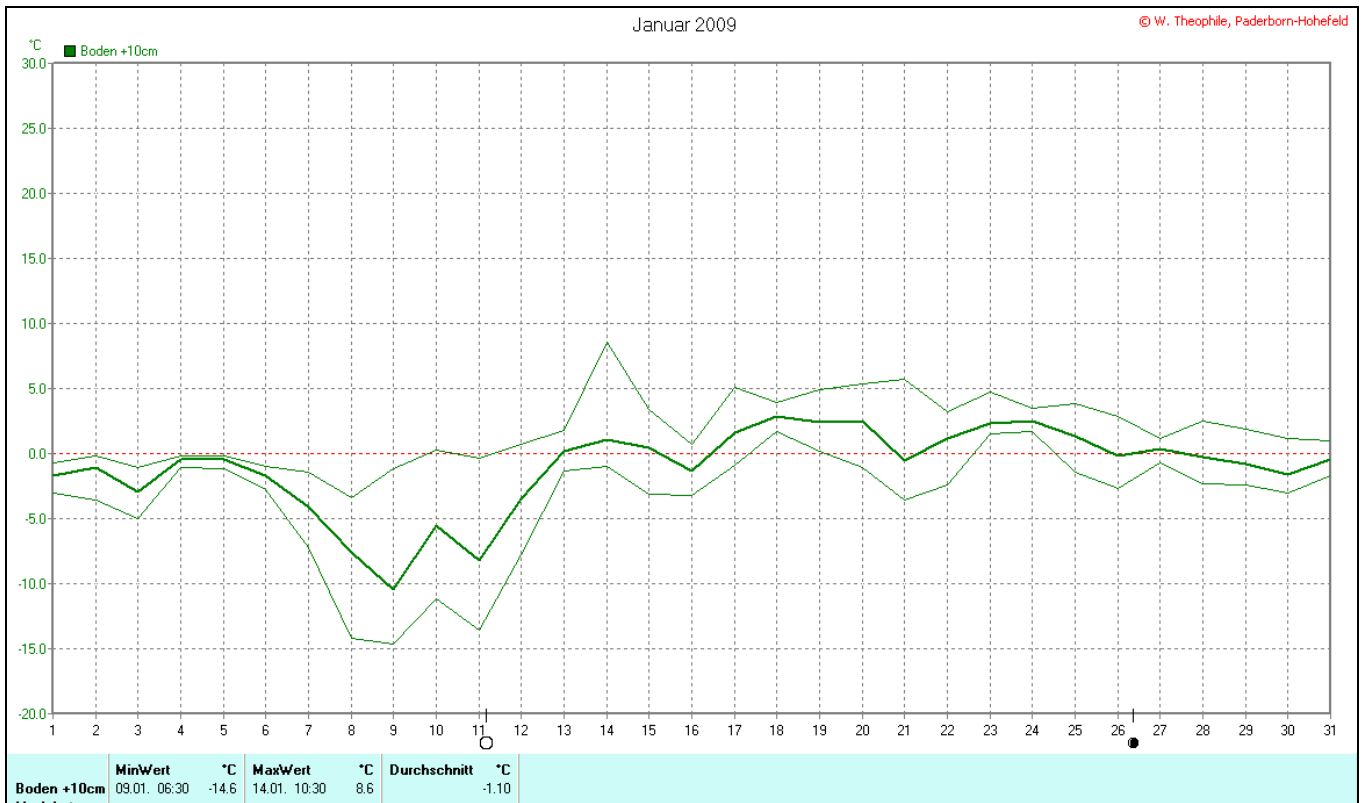
Luftdruck	MinWert	hPa	MaxWert	hPa	Durchschnitt	hPa
	23.01. 16:00	965.4	08.01. 21:30	1032.4		1014.5

Januar 2009

© W. Theophile, Paderborn-Hohefeld

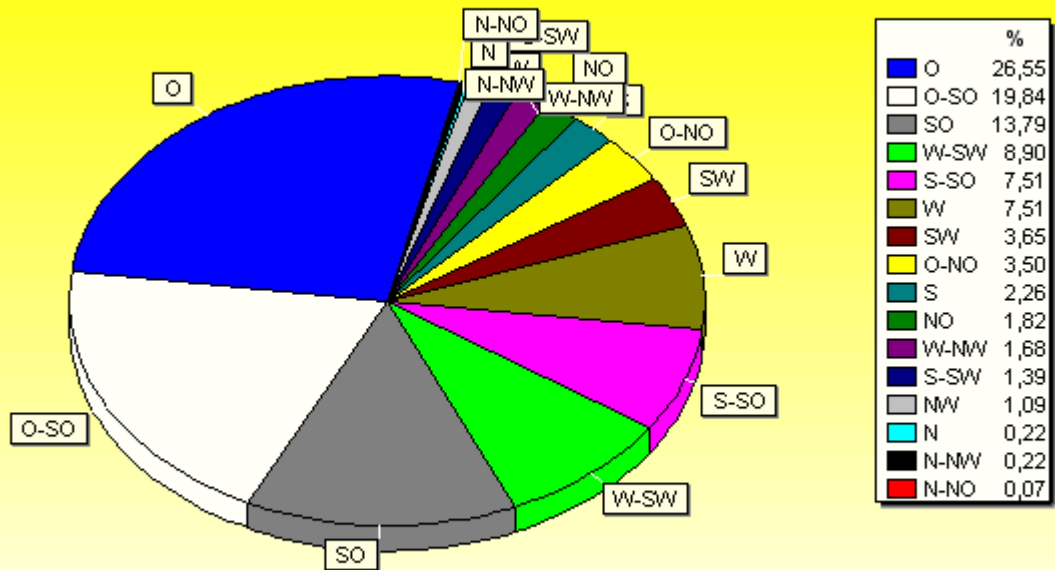


Wind	MinWert	km/h	MaxWert	km/h	Durchschnitt	km/h
	01.01. 00:00	0.0	23.01. 21:30SO	61.1		17.3



Verteilung Windrichtung Januar 2009

Paderborn-Hohefeld

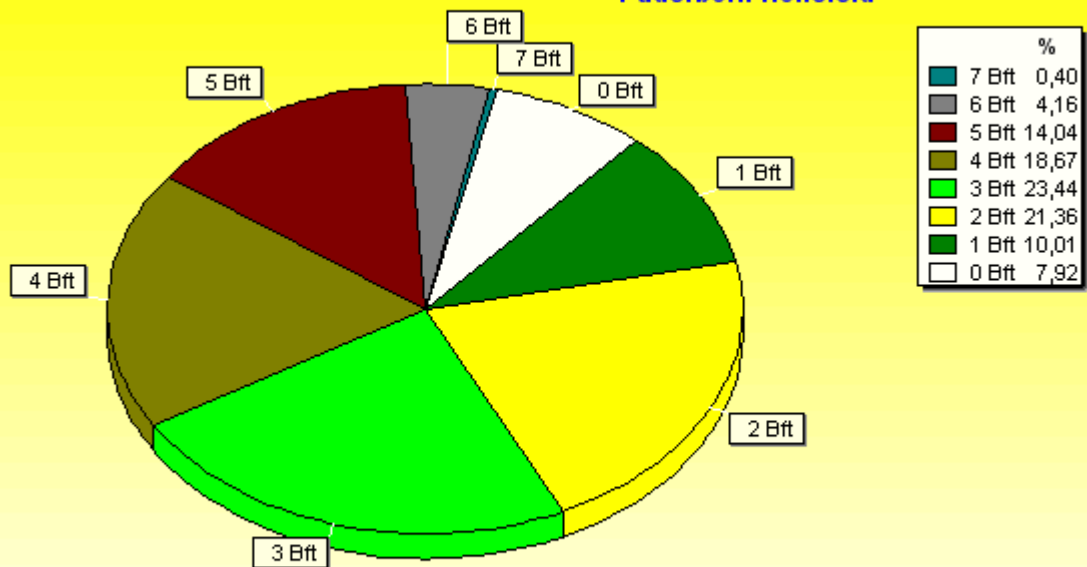


1371 / 118 Werte -> 7.9% Windstille - Ø 17,3km/h - Max. 61,1km/h

© W:Win32

Verteilung Windstärke Januar 2009

Paderborn-Hohefeld



1489 Werte - Ø 17,3km/h - Max. 61,1km/h

© W:Win32