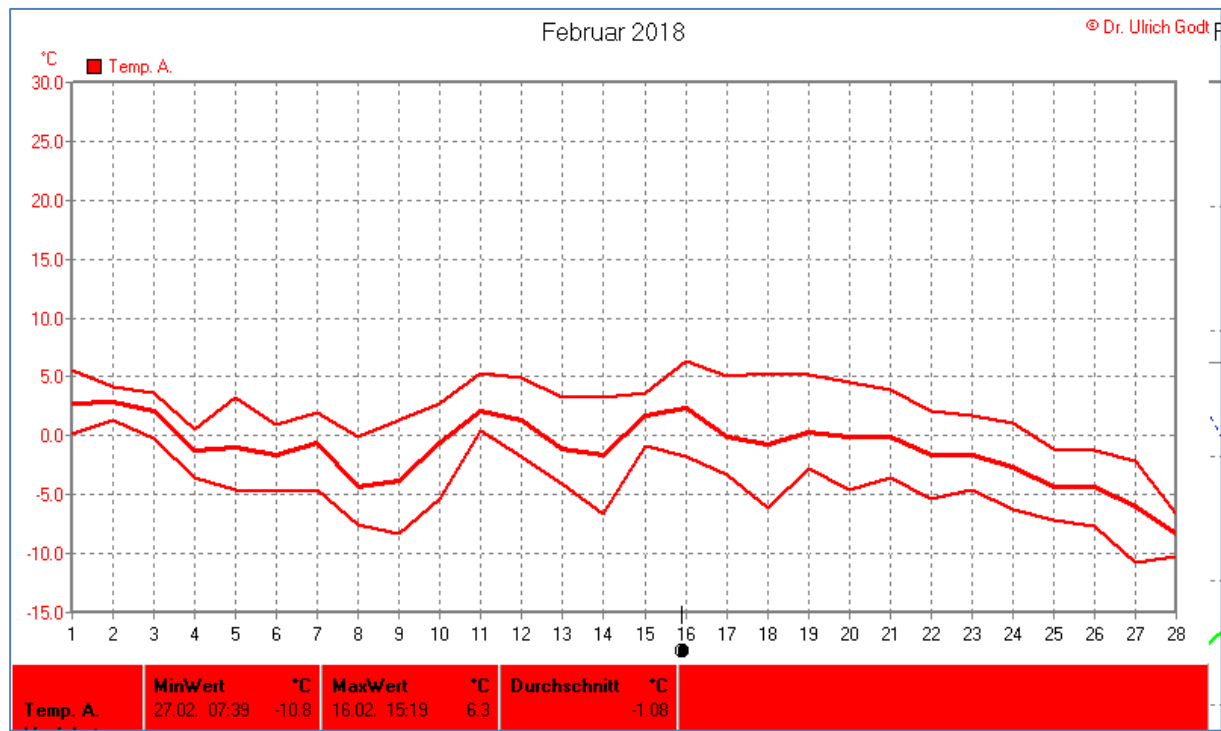
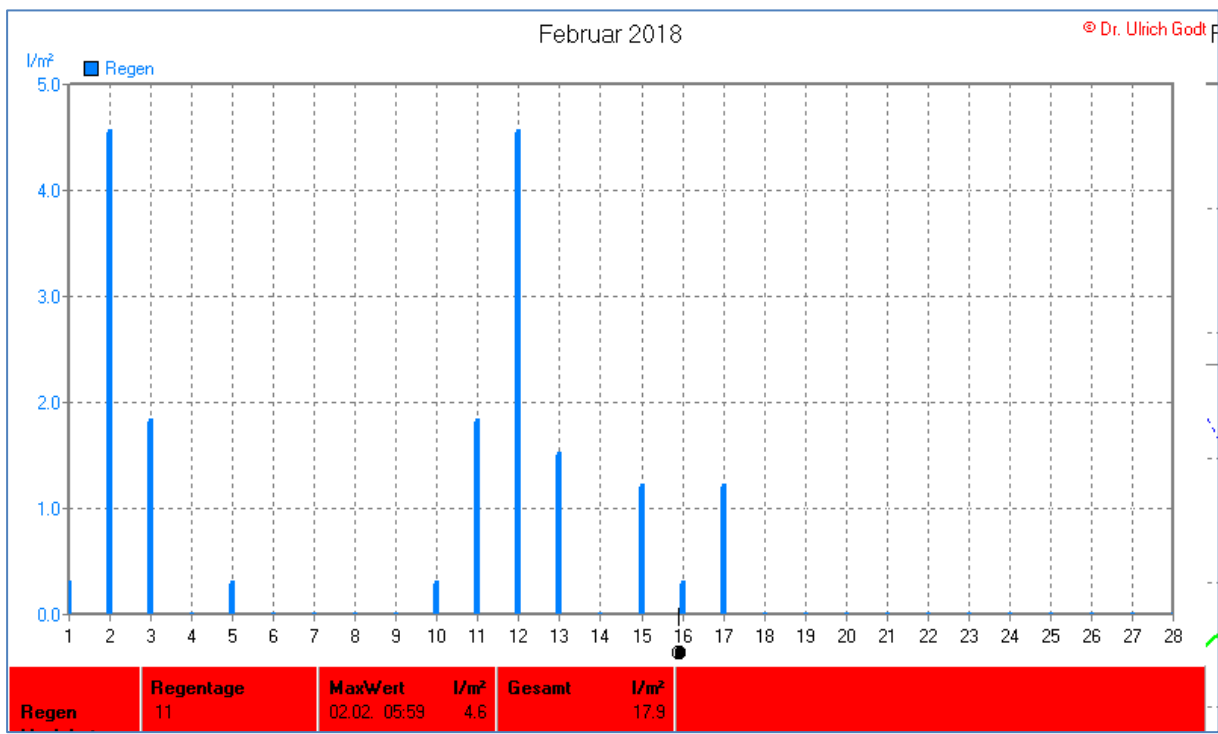
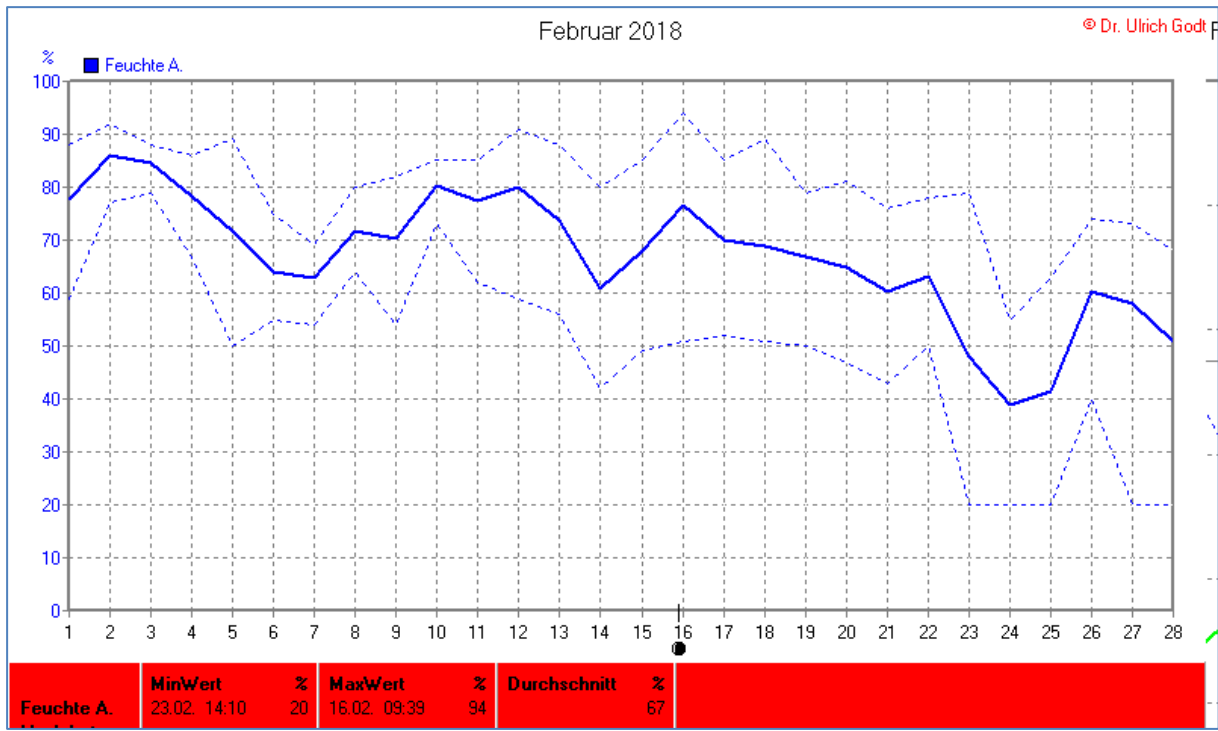
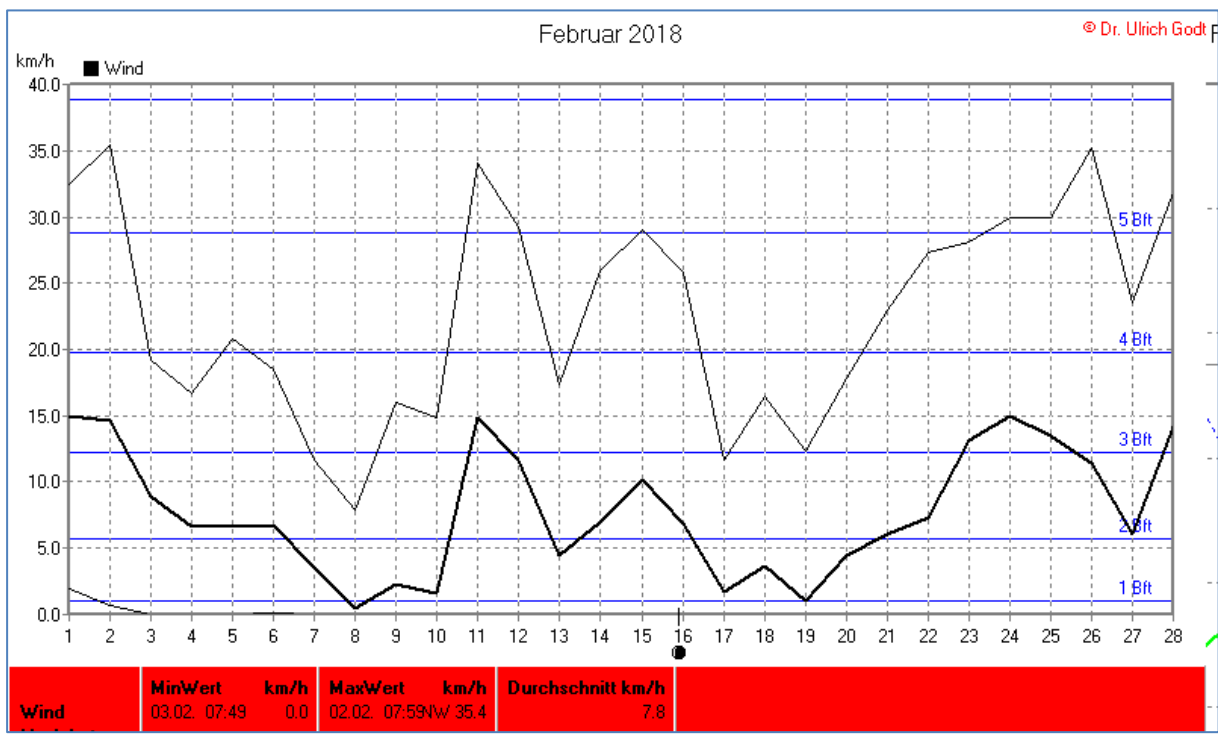
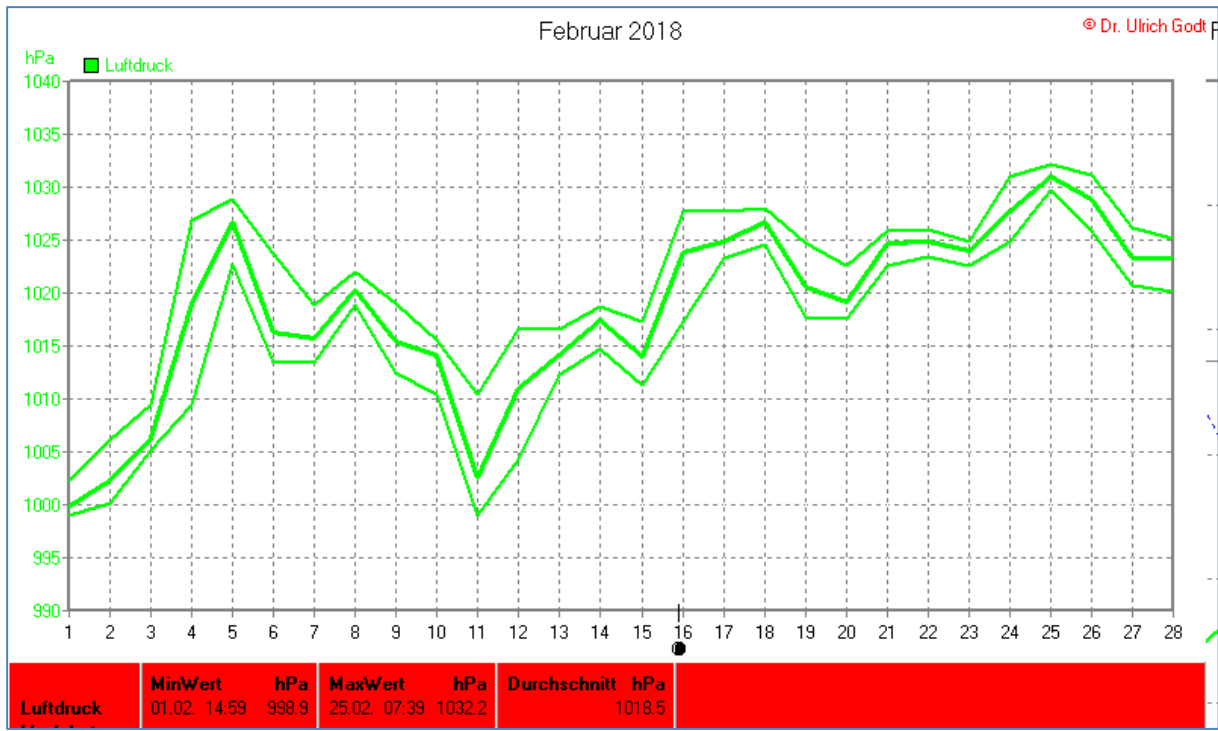


Wettertabelle und Grafiken Februar 2018 Station Elsen

Wetterdaten Februar 2018 Station Elsen							
© Dr. Ulrich Godt							
Meßgröße	Minimum	Zeit	Datum	Maximum	Zeit	Datum	Durchschnitt
Temperatur	-10,8 °C	07:39	27.02.2018	6,3 °C	15:19	16.02.2018	-1,1 °C
Bodentemp.	-5,8 °C	06:49	27.02.2018	9,0 °C	13:59	18.02.2018	-0,3 °C
Luftfeuchte	20 %	14:10	23.02.2018	94 %	09:39	16.02.2018	67 %
Luftdruck	998,9 hPa	14:59	01.02.2018	1032,2 hPa	07:39	25.02.2018	1018,5 hPa
Wind km/h				35,4 km/h	07:59	02.02.2018	7,8 km/h
Wind °				NW	07:59	02.02.2018	S-SO
Regen l/m ²				4,6 l/m ²	05:59	02.02.2018	#17,936 l/m ²
Sonne h				8:21 h	17:39	23.02.2018	#126:19 h

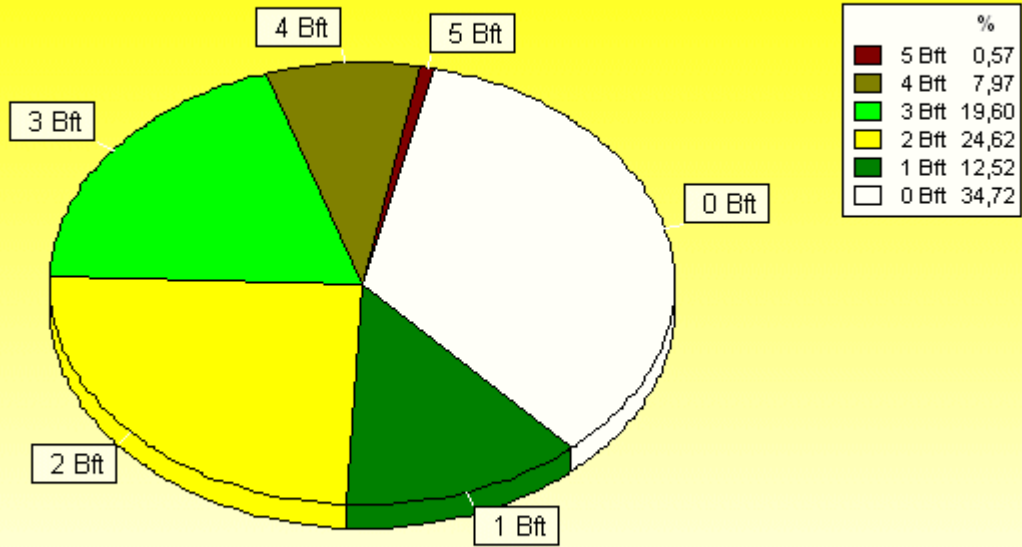






Verteilung Windstärke Februar 2018

Elsen, Kreis Paderborn

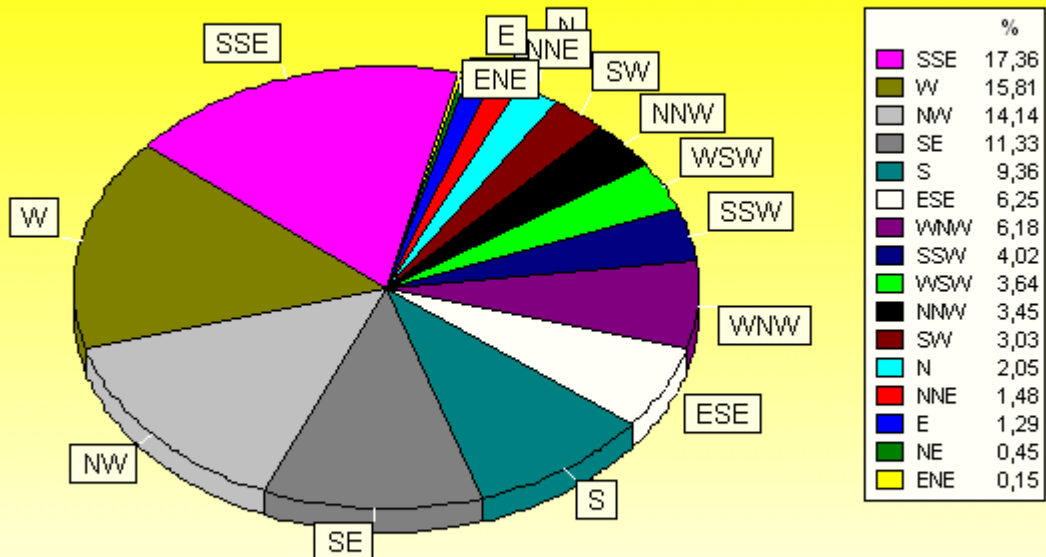


4041 Werte - Ø 7,8km/h - Max. 35,4km/h

© WzWin32 - © Dr. Ulrich Godt - Elsen, Kreis Paderborn

Verteilung Windrichtung Februar 2018

Elsen, Kreis Paderborn



2638 / 1403 Werte -> 34.7% Windstille - Ø 7,8km/h - Max. 35,4km/h

© WzWin32 - © Dr. Ulrich Godt - Elsen, Kreis Paderborn

