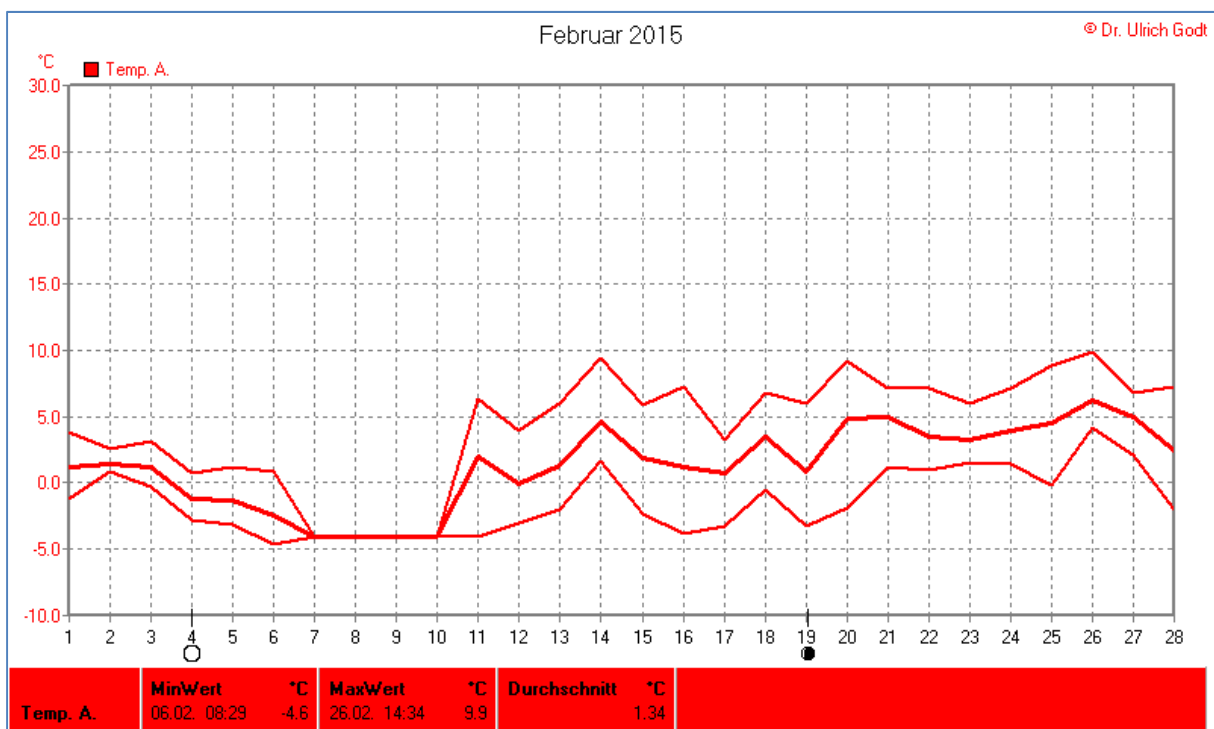
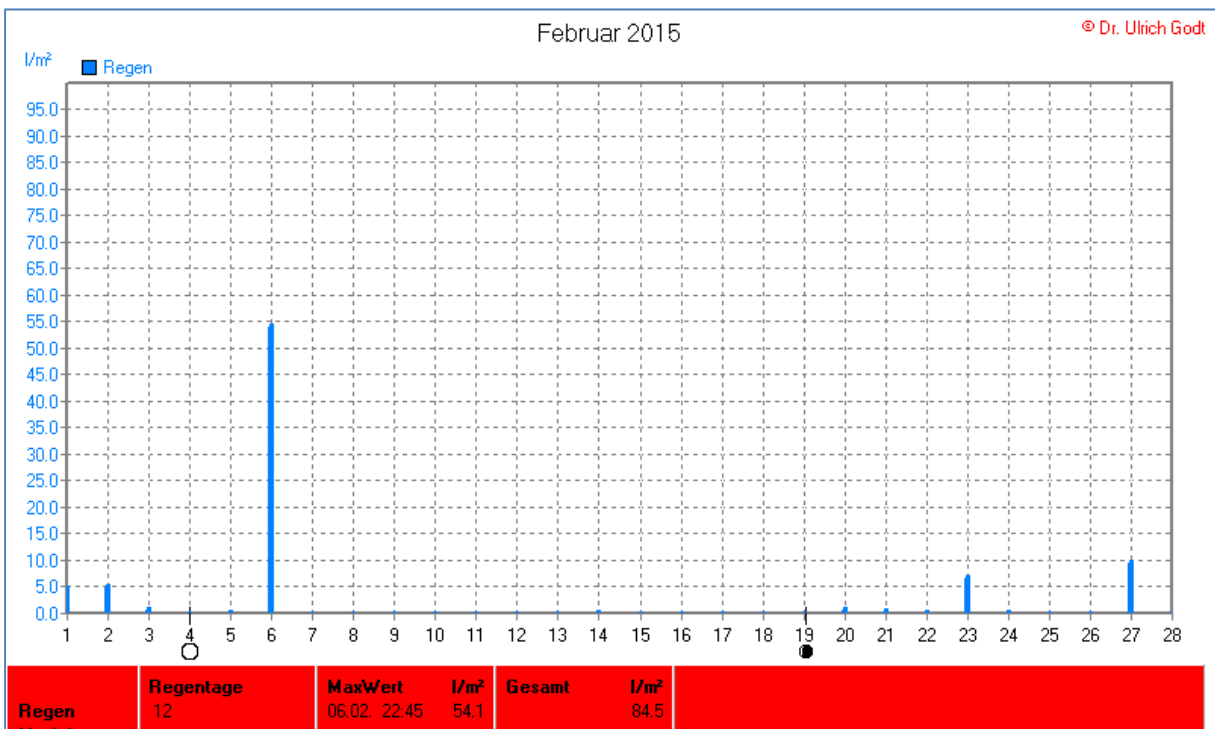
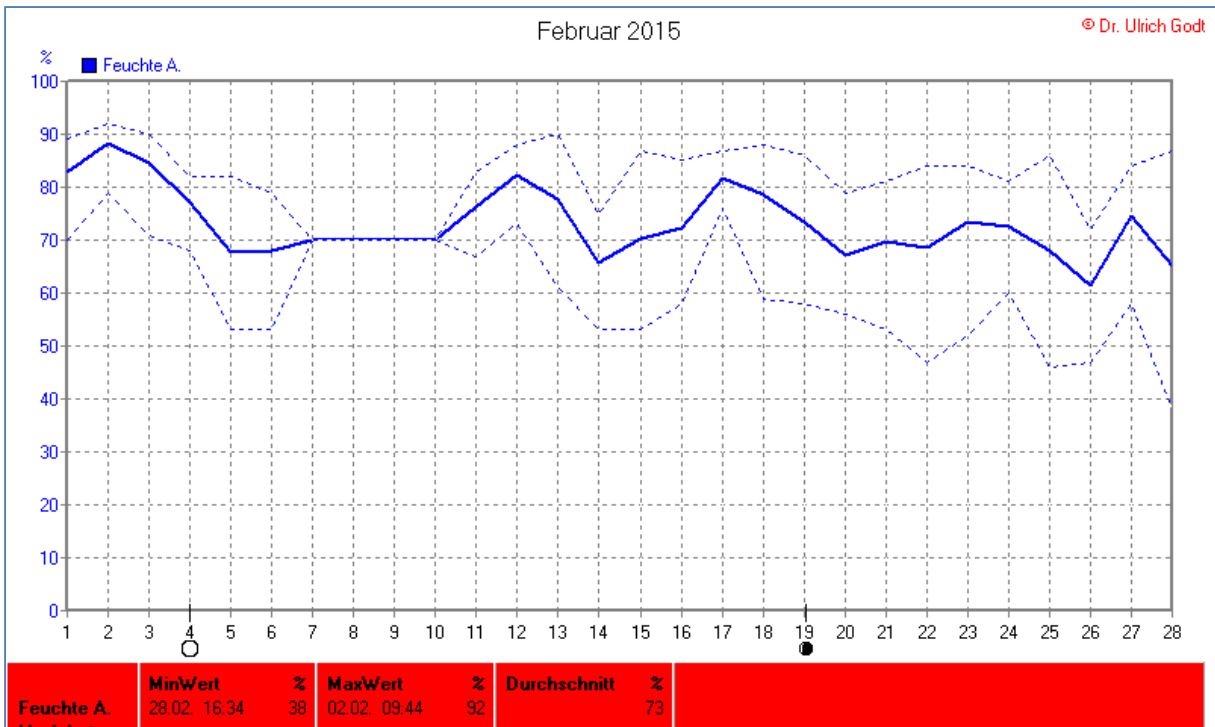
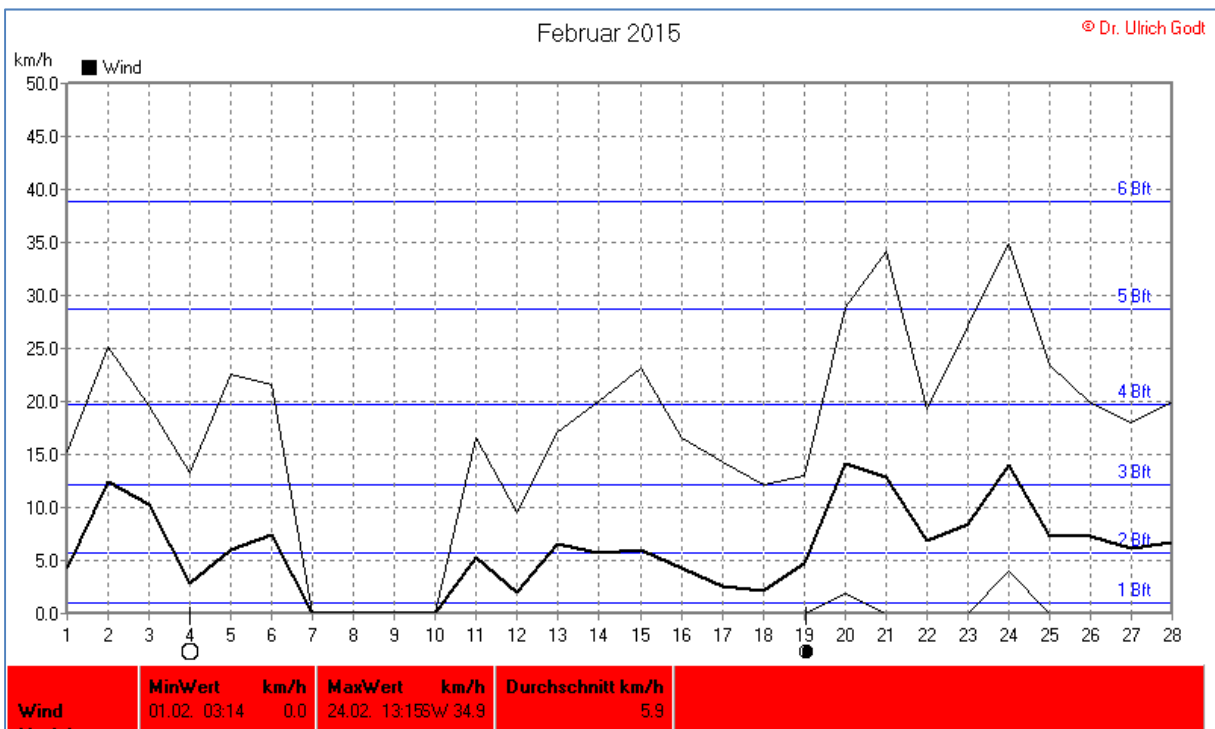
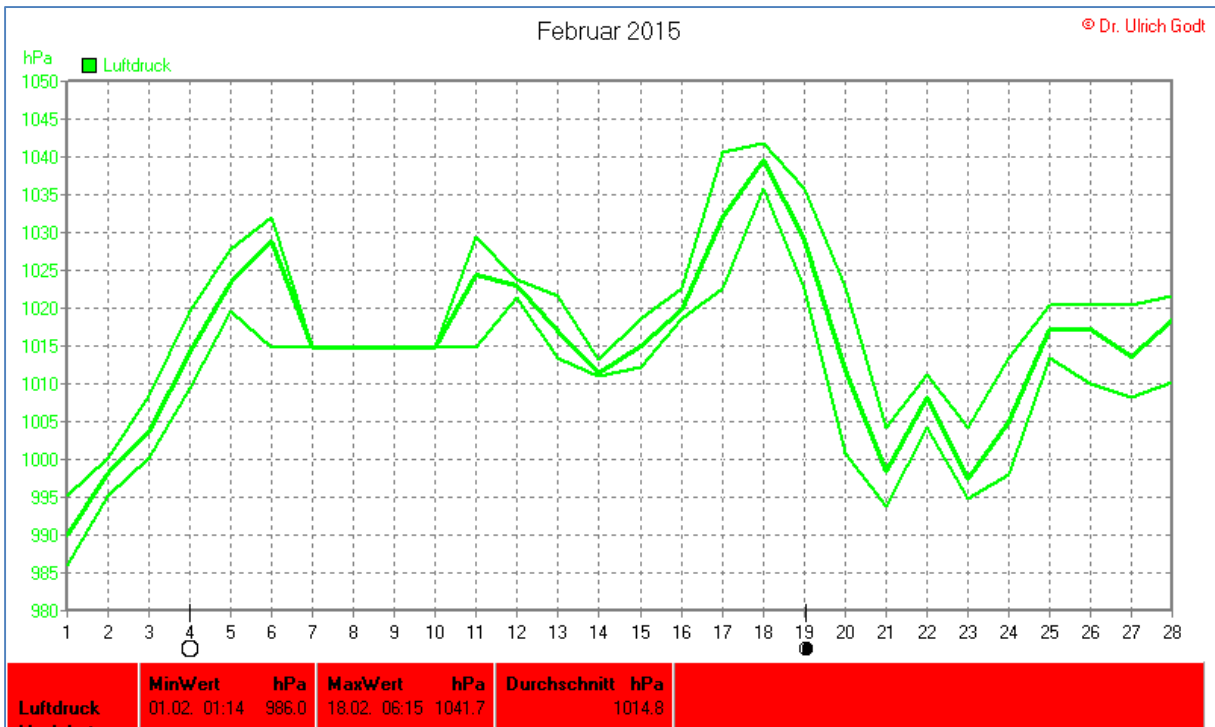


Wettertabelle und Grafiken Februar 2015 Station Elsen

Wetterdaten Februar 2015 Station Elsen							
© Dr. Ulrich Godt							
Meßgröße	Minimum	Zeit	Datum	Maximum	Zeit	Datum	Durchschnitt
Temperatur	-4,6 °C	08:29	06.02.2015	9,9 °C	14:34	26.02.2015	1,3 °C
Bodentemp.	-50,0 °C	12:49	28.02.2015	12,2 °C	13:31	25.02.2015	4,0 °C
Luftfeuchte	38 %	16:34	28.02.2015	92 %	09:44	02.02.2015	73 %
Luftdruck	986,0 hPa	01:14	01.02.2015	1041,7 hPa	06:15	18.02.2015	1014,8 hPa
Wind km/h				34,9 km/h	13:15	24.02.2015	5,9 km/h
Wind °				SW	13:15	24.02.2015	W-SW
Regen l/m ²				54,1 l/m ²	22:45	06.02.2015	#84,500 l/m ²
Sonne h				8:30 h	17:49	28.02.2015	#89:03 h

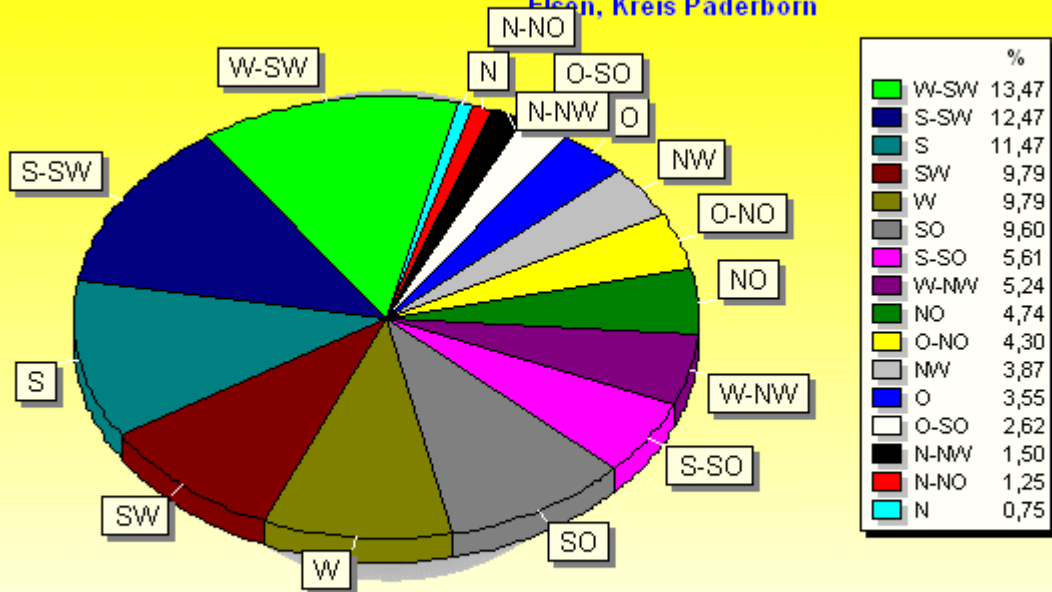






Verteilung Windrichtung Februar 2015

Elsen, Kreis Paderborn

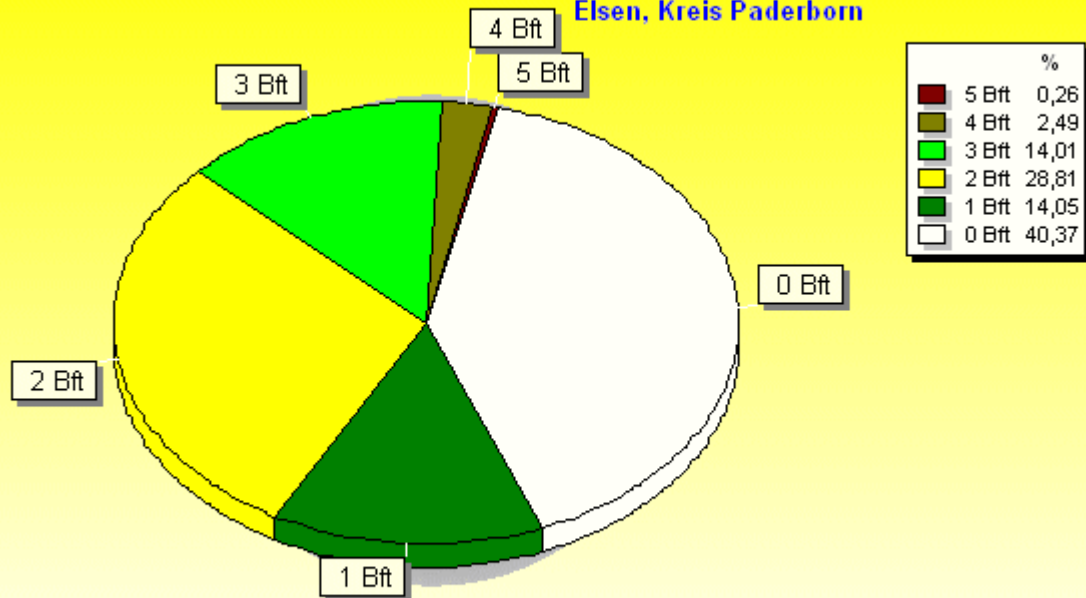


1604 / 1086 Werte -> 40.4% Windstille - Ø 5,9km/h - Max. 34,9km/h

© WzWin32 - © Dr. Ulrich Godt - Elsen, Kreis Paderborn

Verteilung Windstärke Februar 2015

Elsen, Kreis Paderborn



2690 Werte - Ø 5,9km/h - Max. 34,9km/h

© WzWin32 - © Dr. Ulrich Godt - Elsen, Kreis Paderborn

