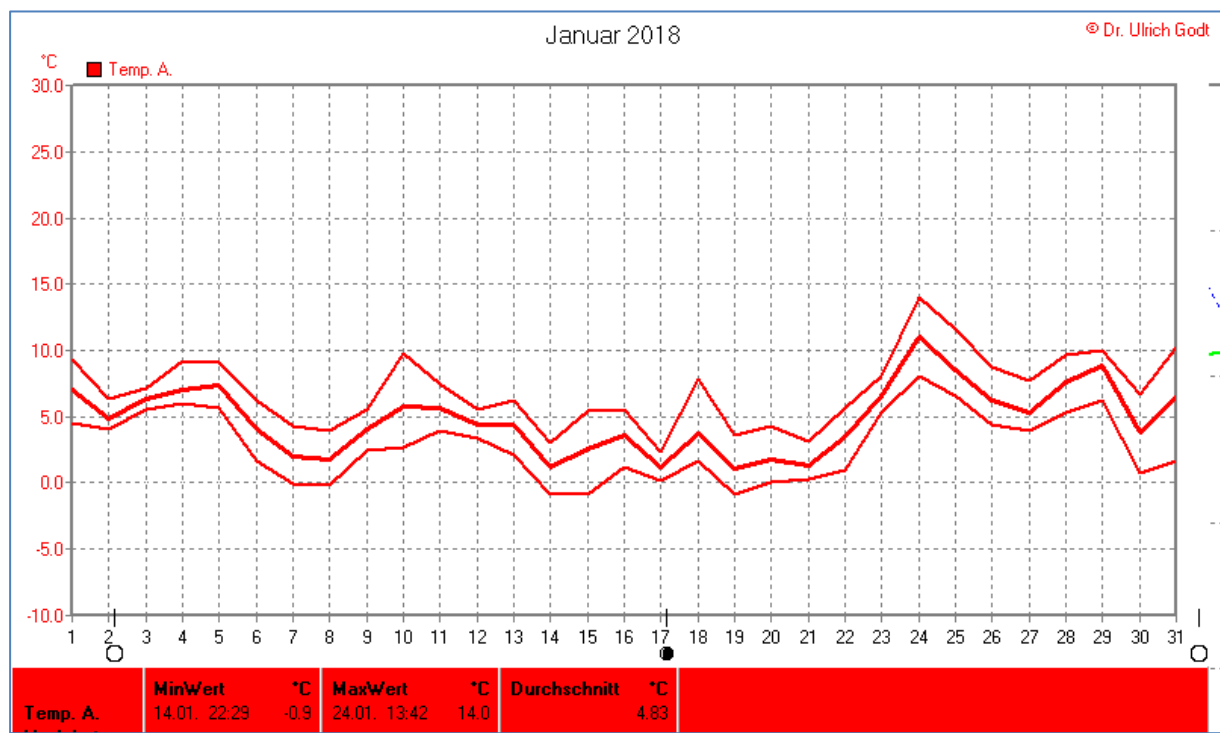
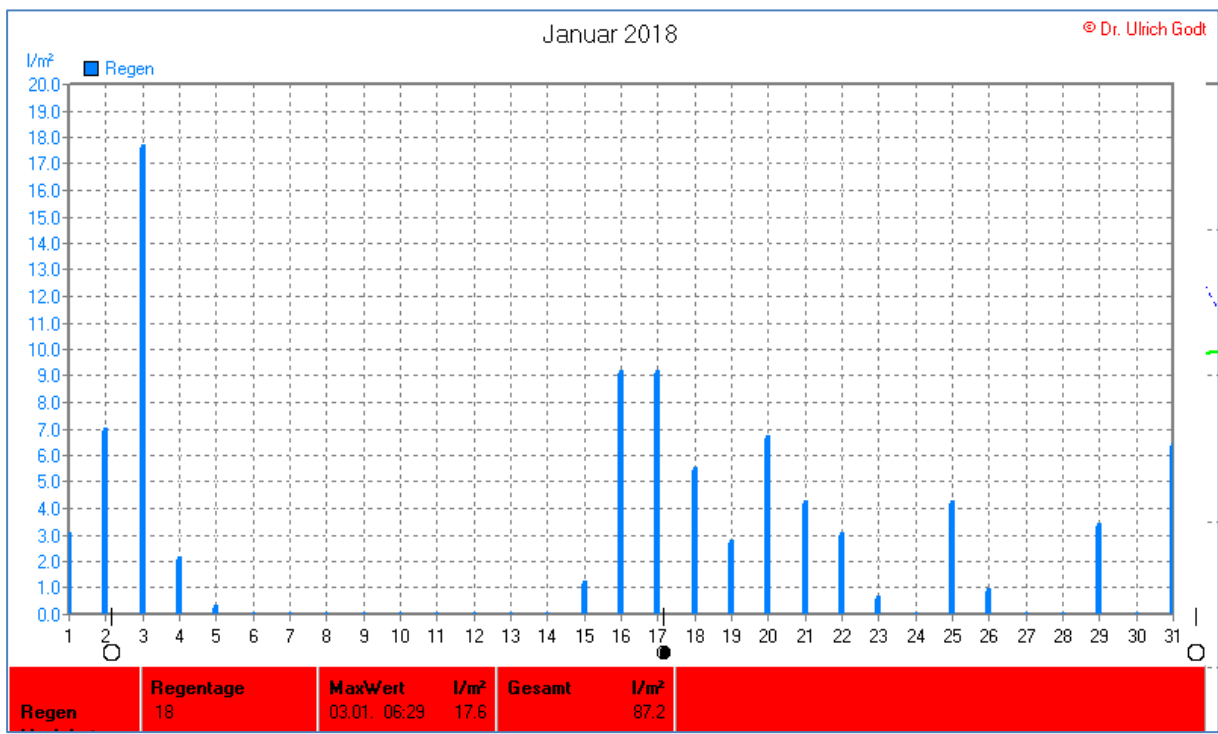
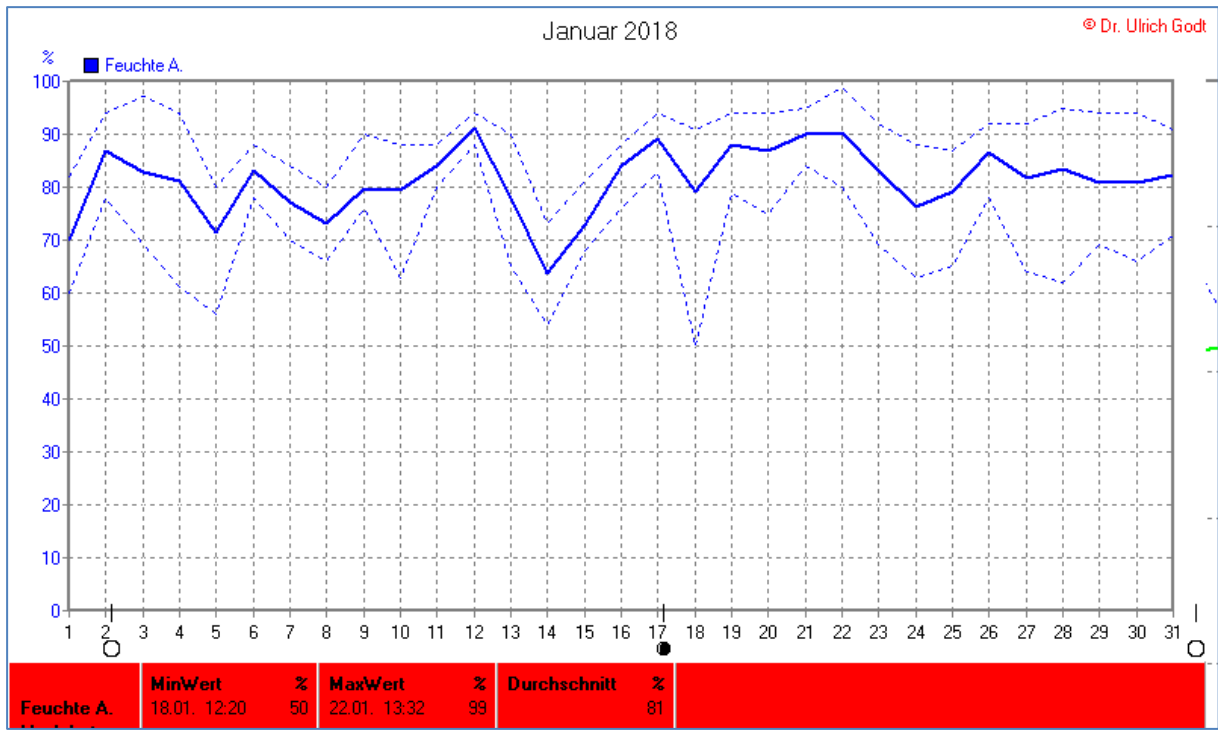
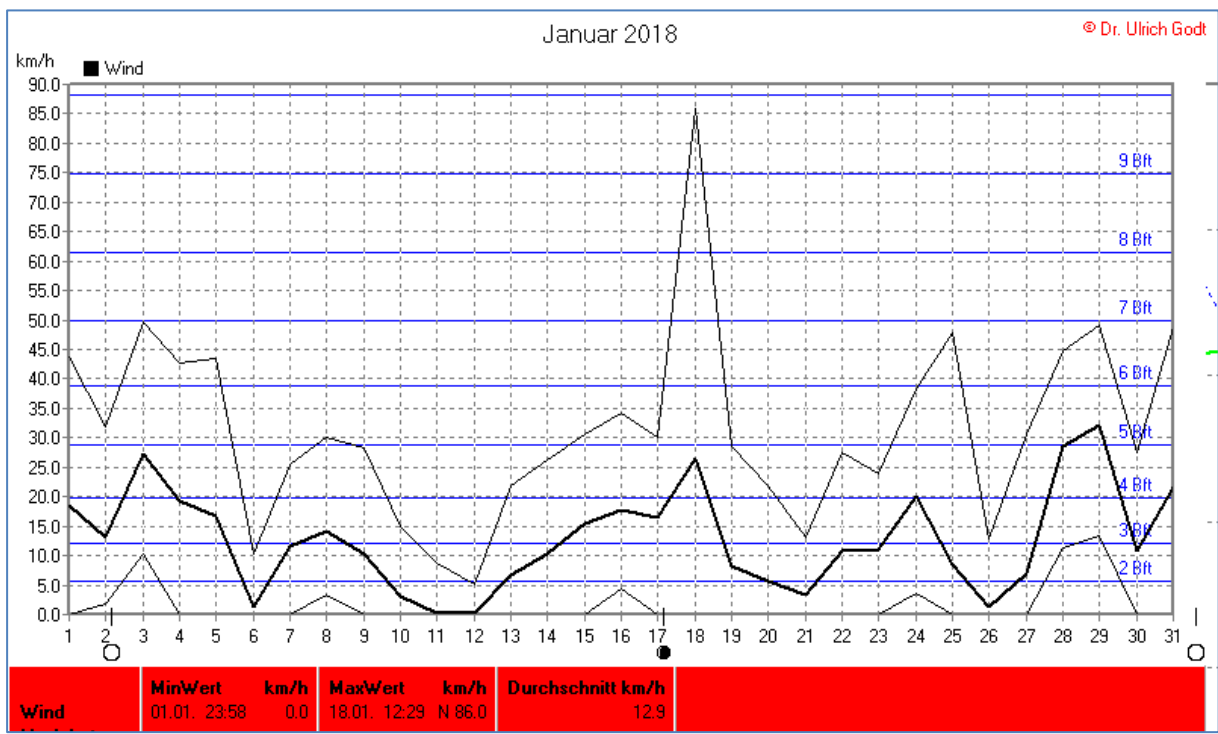
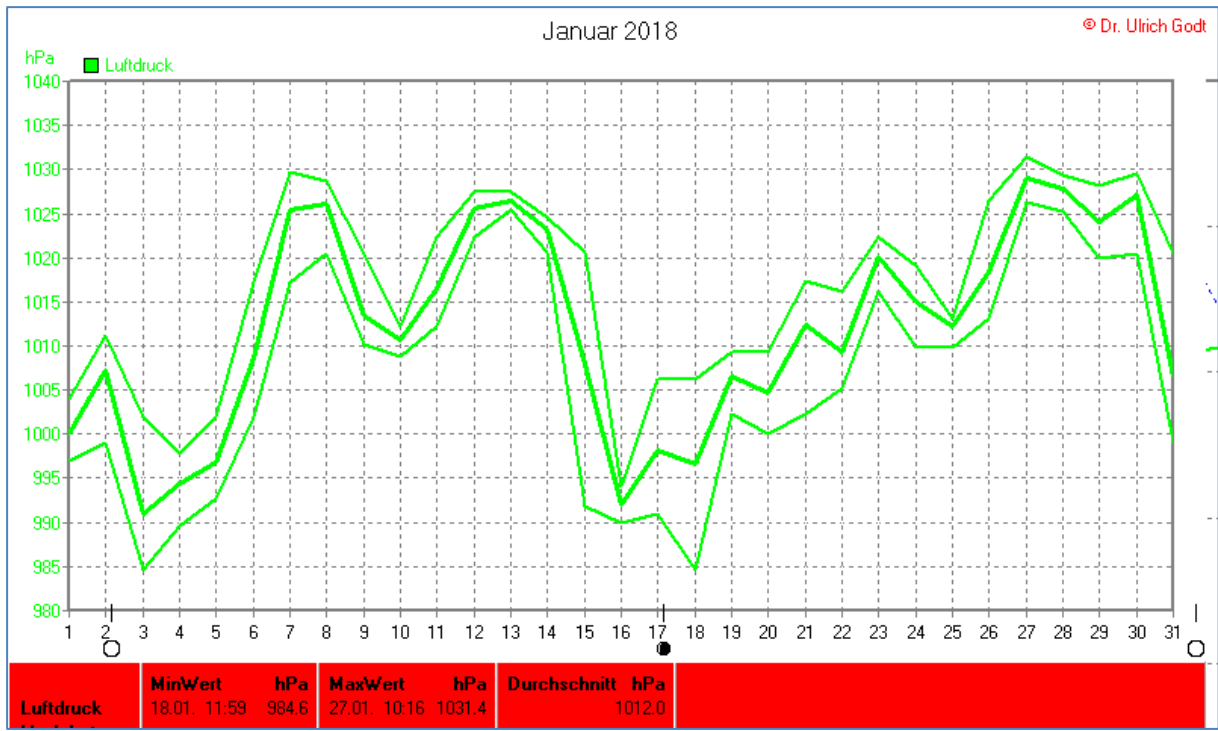


## Wettertabelle und Grafiken Januar 2018 Station Elsen

Wetterdaten Januar 2018 Station Elsen							
© Dr. Ulrich Godt							
Meßgröße	Minimum	Zeit	Datum	Maximum	Zeit	Datum	Durchschnitt
Temperatur	-0,9 °C	22:29	14.01.2018	14,0 °C	13:42	24.01.2018	4,8 °C
Bodenemp.	-1,6 °C	03:29	15.01.2018	6,9 °C	16:32	24.01.2018	2,7 °C
Luftfeuchte	50 %	12:20	18.01.2018	99 %	13:32	22.01.2018	81 %
Luftdruck	984,6 hPa	11:59	18.01.2018	1031,4 hPa	10:16	27.01.2018	1012,0 hPa
Wind km/h				86,0 km/h	12:29	18.01.2018	12,9 km/h
Wind °				N	12:29	18.01.2018	NW
Regen l/m²				17,6 l/m²	06:29	03.01.2018	#87,248 l/m²
Sonne h				5:20 h	14:49	14.01.2018	#35:00 h

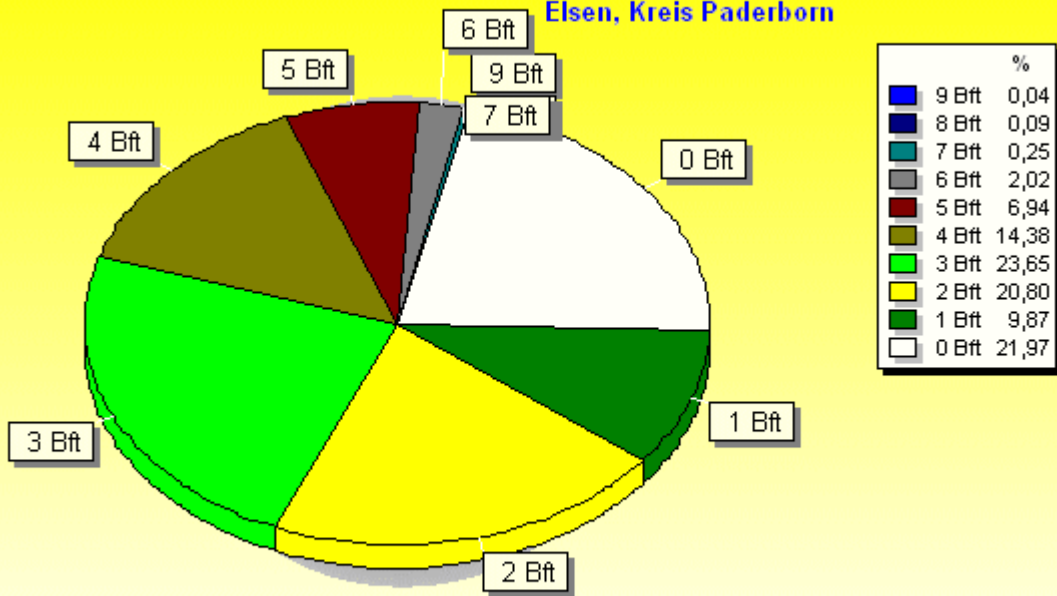






### Verteilung Windstärke Januar 2018

Elsen, Kreis Paderborn

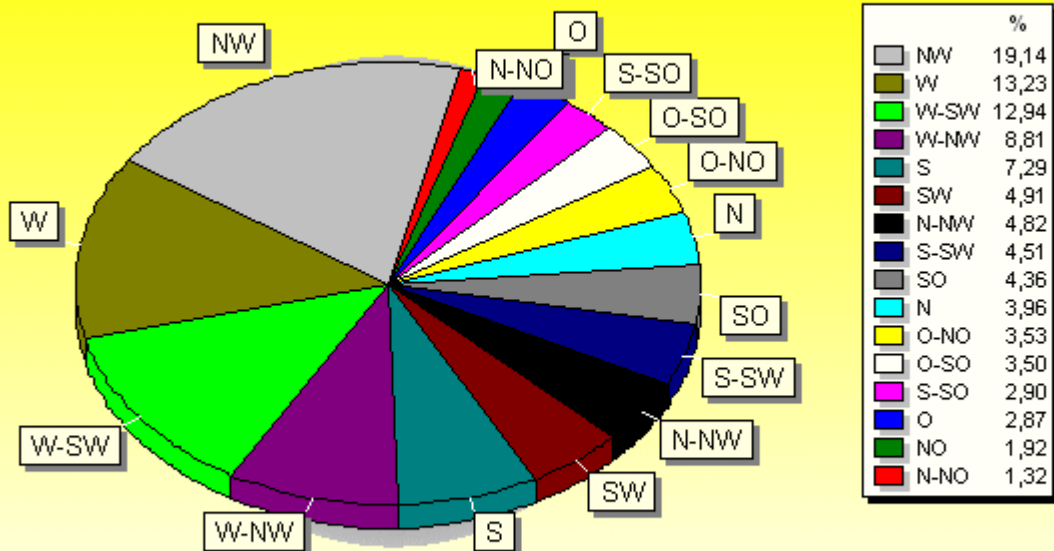


4466 Werte - Ø 12,9km/h - Max. 86,0km/h

© WzWin32 - © Dr. Ulrich Godt - Elsen, Kreis Paderborn

### Verteilung Windrichtung Januar 2018

Elsen, Kreis Paderborn



3485 / 981 Werte -> 22,0% Windstille - Ø 12,9km/h - Max. 86,0km/h

© WzWin32 - © Dr. Ulrich Godt - Elsen, Kreis Paderborn

