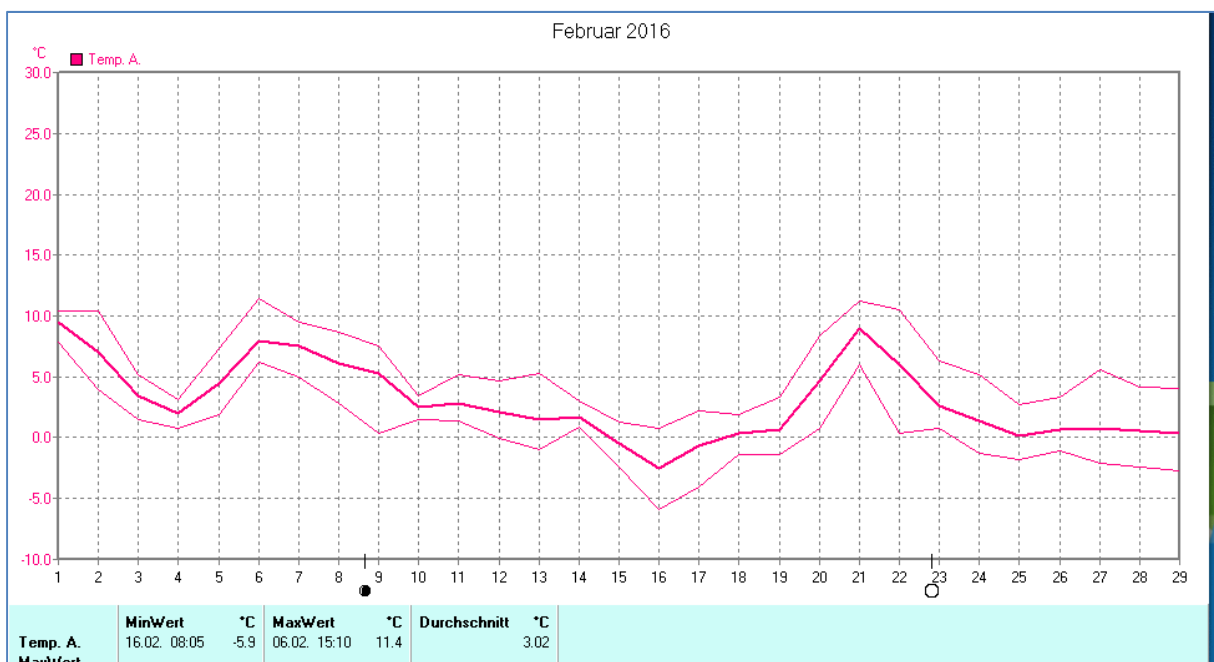
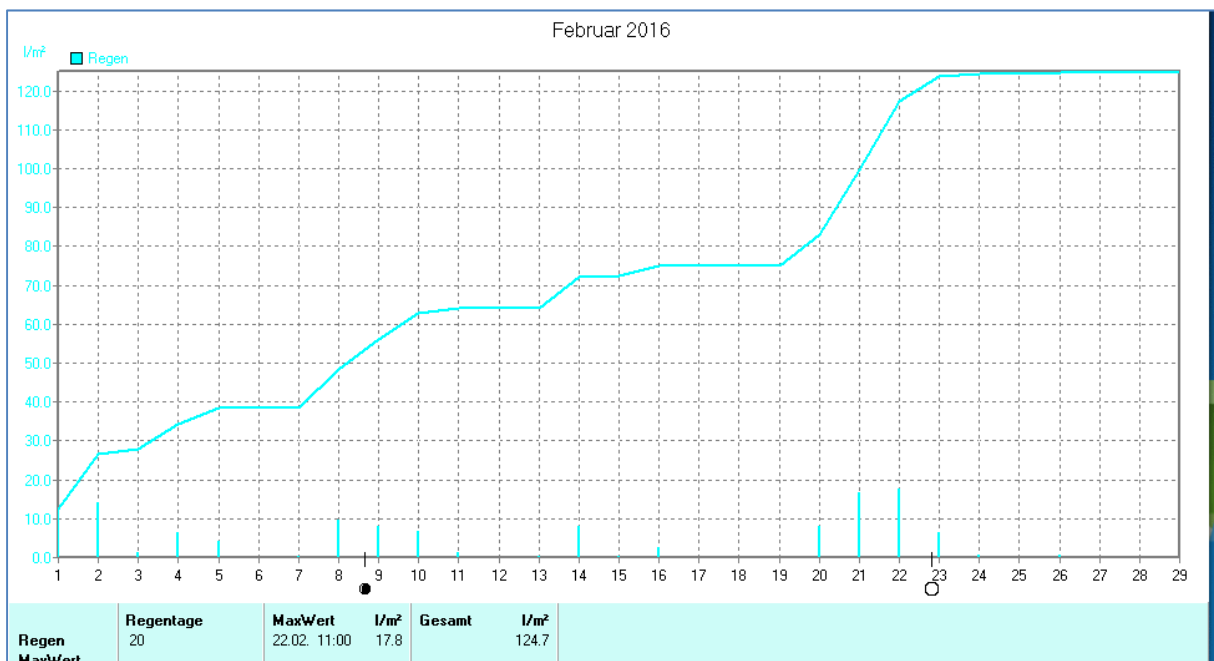
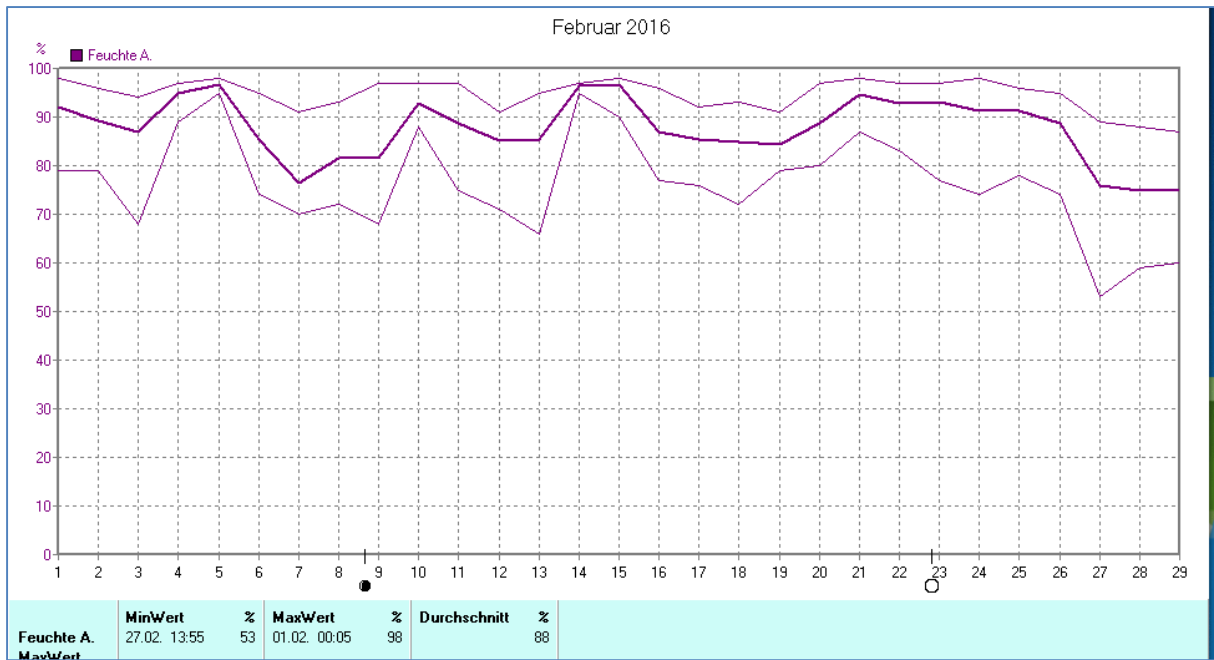
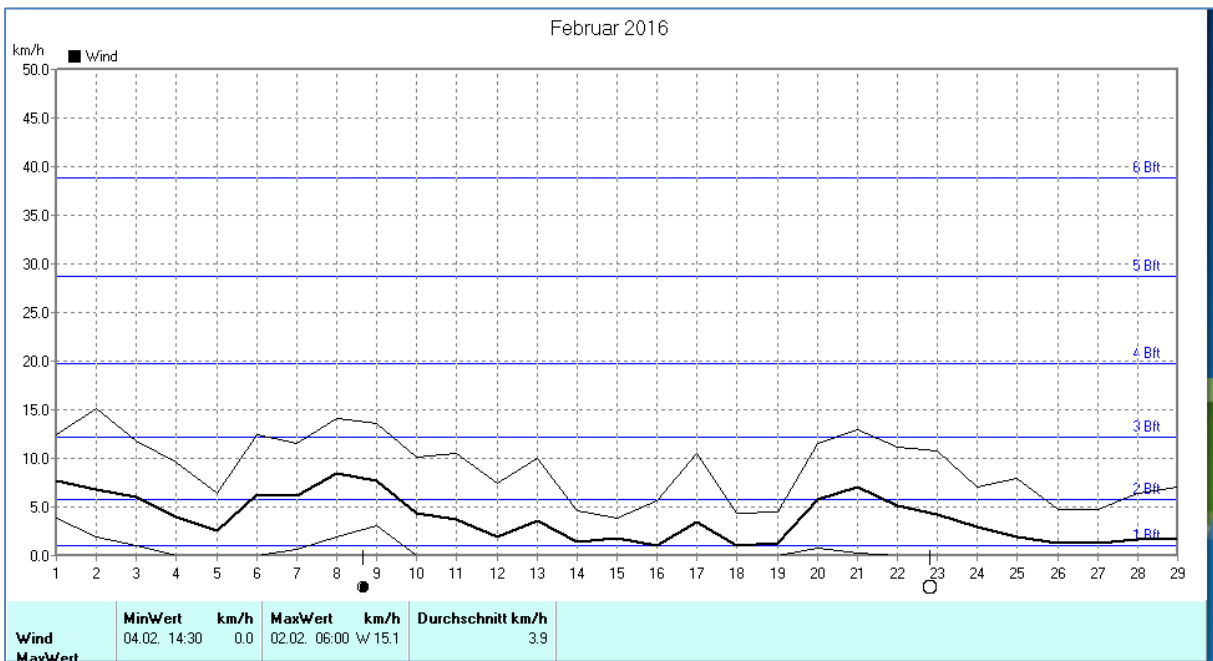
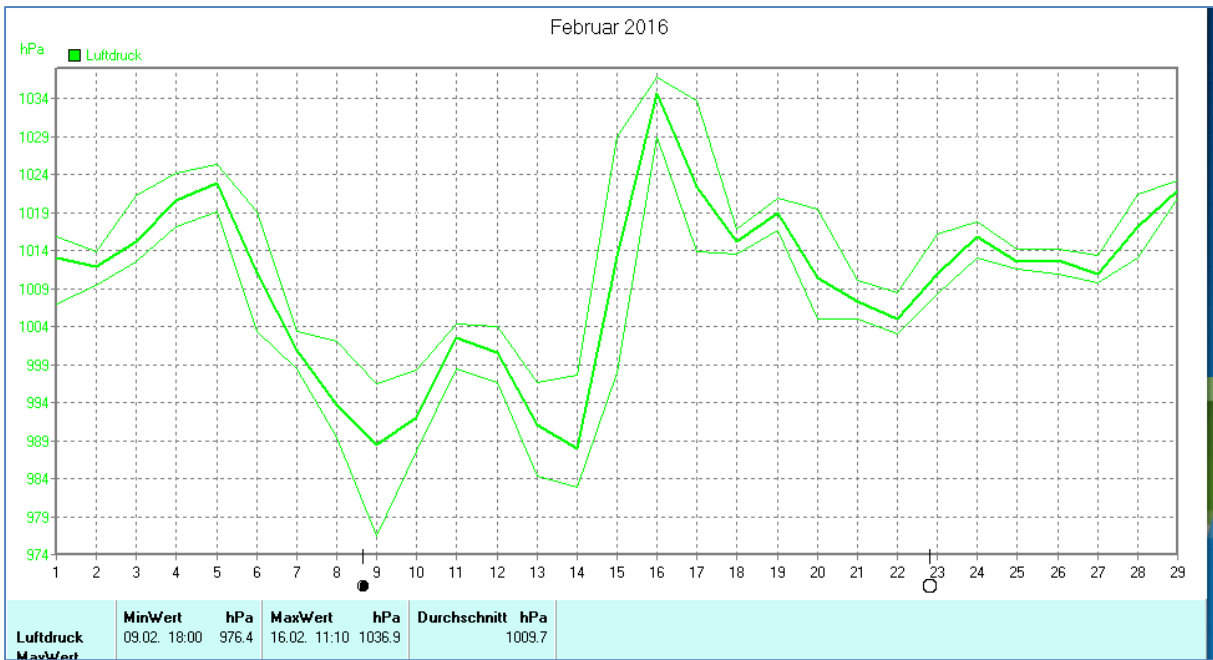


Wettertabelle und Grafiken Februar 2016 Station Dörenhagen

Wetterdaten Februar 2016 Station Dörenhagen							
Meßgröße	Minimum	Zeit	Datum	Maximum	Zeit	Datum	Durchschnitt
Temperatur	-5,9 °C	08:05	16.02.2016	11,4 °C	15:10	06.02.2016	3,0 °C
Luftfeuchte	53 %	13:55	27.02.2016	98 %	00:05	01.02.2016	88 %
Luftdruck	976,4 hPa	18:00	09.02.2016	1036,9 hPa	11:10	16.02.2016	1009,7 hPa
Wind km/h				15,1 km/h	06:00	02.02.2016	3,9 km/h
Wind °				W	06:00	02.02.2016	W
Regen l/m ²				17,8 l/m ²	11:00	22.02.2016	#124,714 l/m ²
Solar				696 W/m ²	13:00	24.02.2016	98 W/m ²
Sonne h				7:15 h	16:15	28.02.2016	#80:20 h

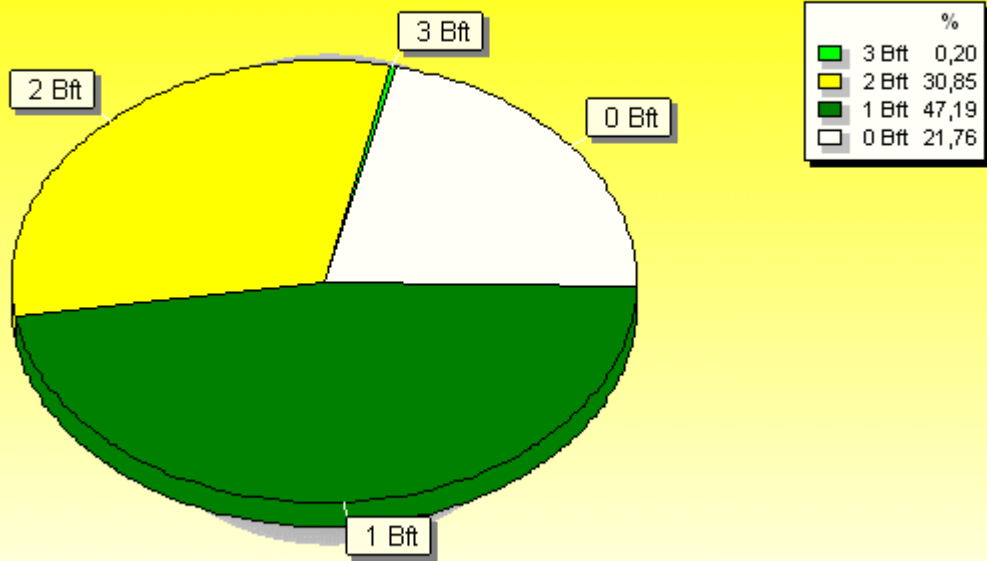






Verteilung Windstärke Februar 2016

Borchen-Dörenhagen

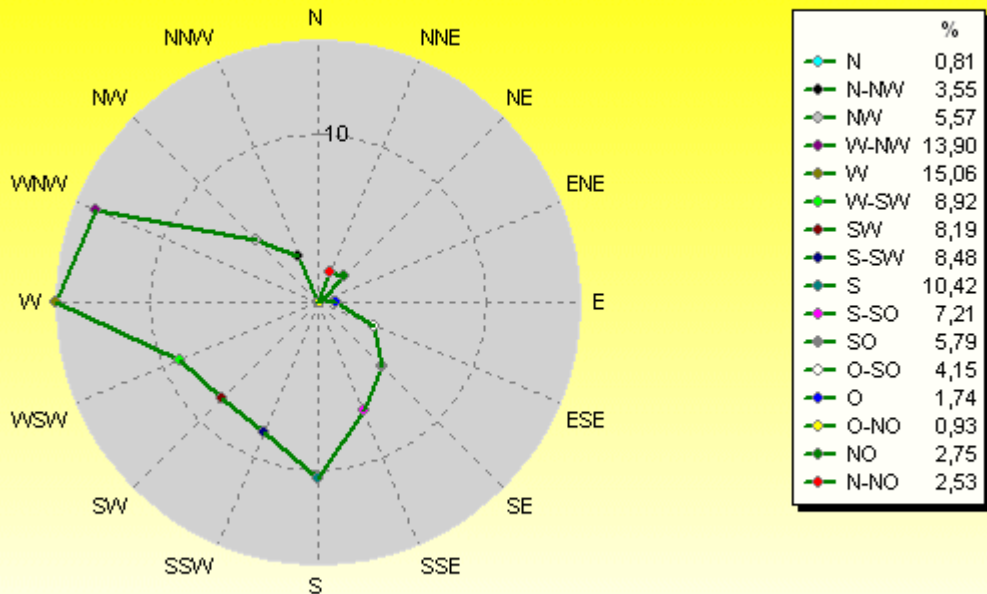


8351 Werte - Ø 3,9km/h - Max. 15,1km/h

© WzWin32

Verteilung Windrichtung Februar 2016

Borchen-Dörenhagen



6534 / 1817 Werte -> 21.8% Windstille - Ø 3,9km/h - Max. 38,6km/h = Windböen

© WzWin32

