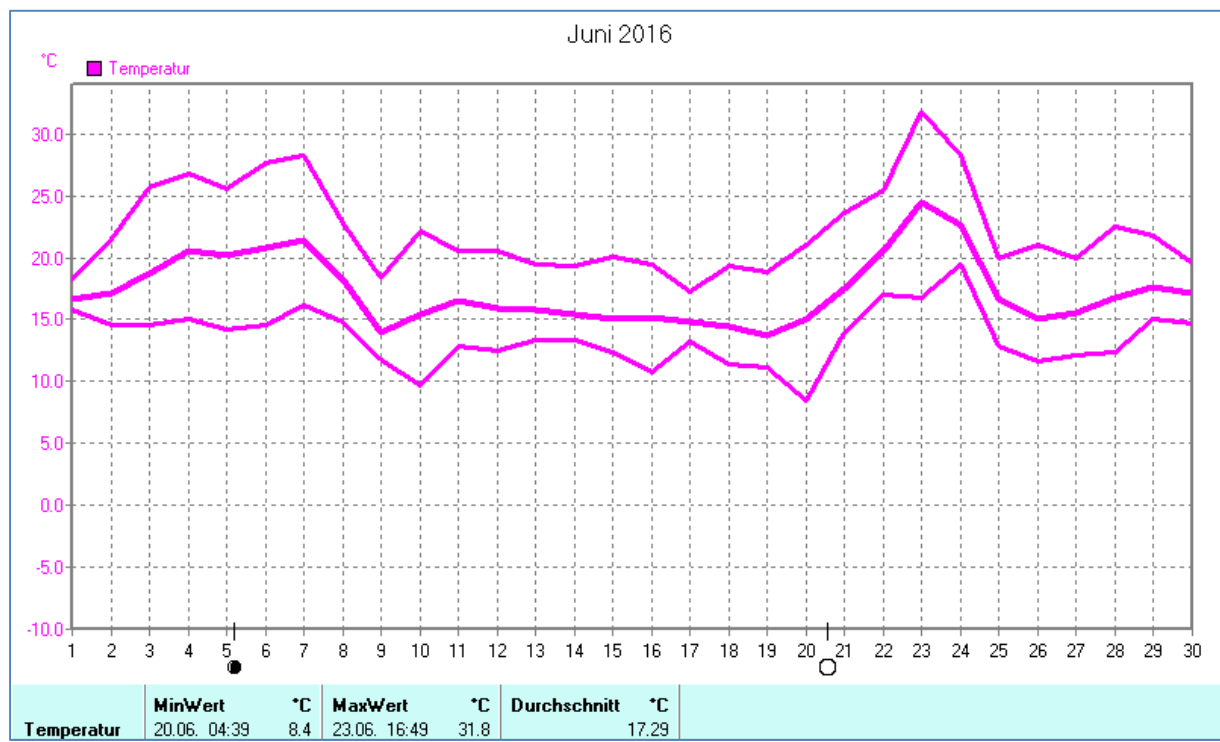
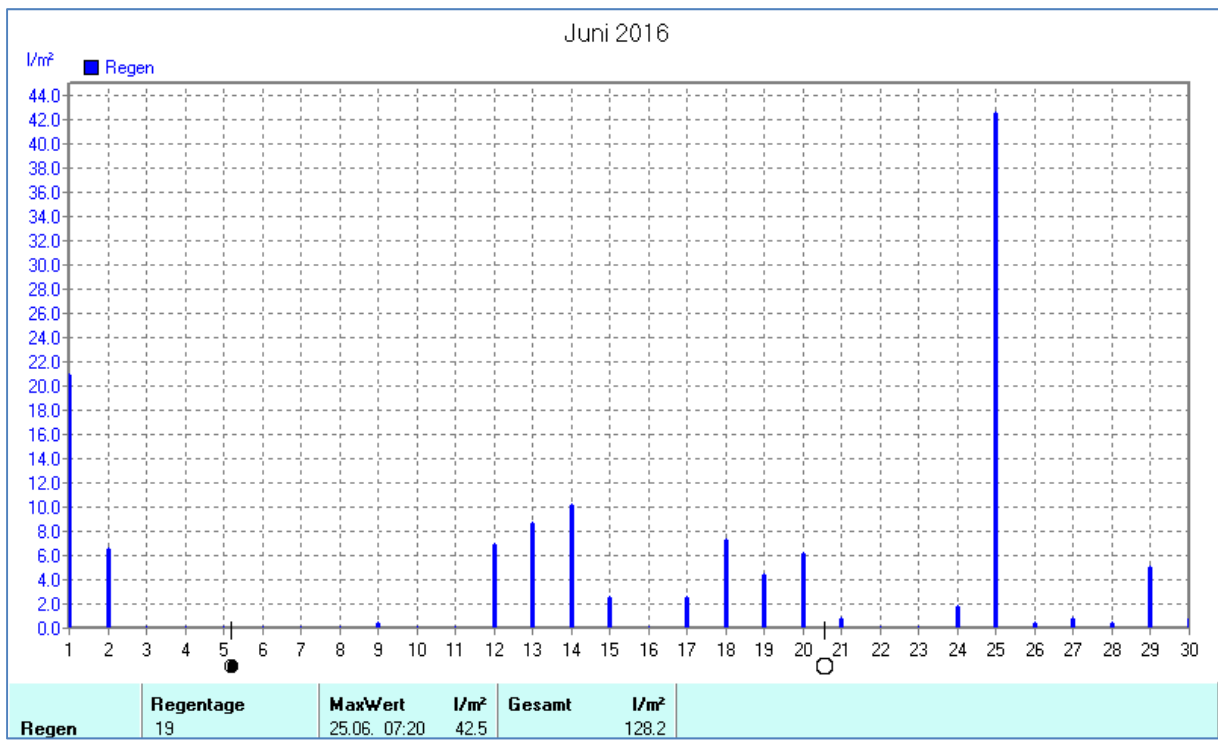
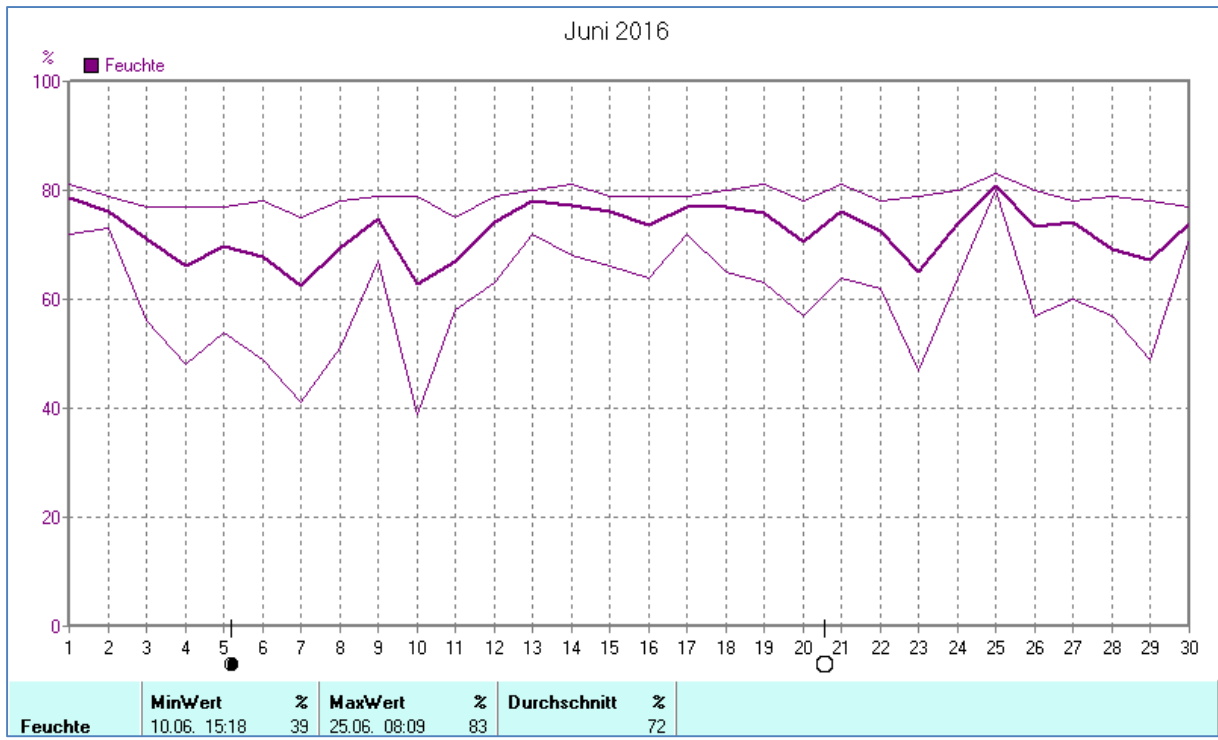
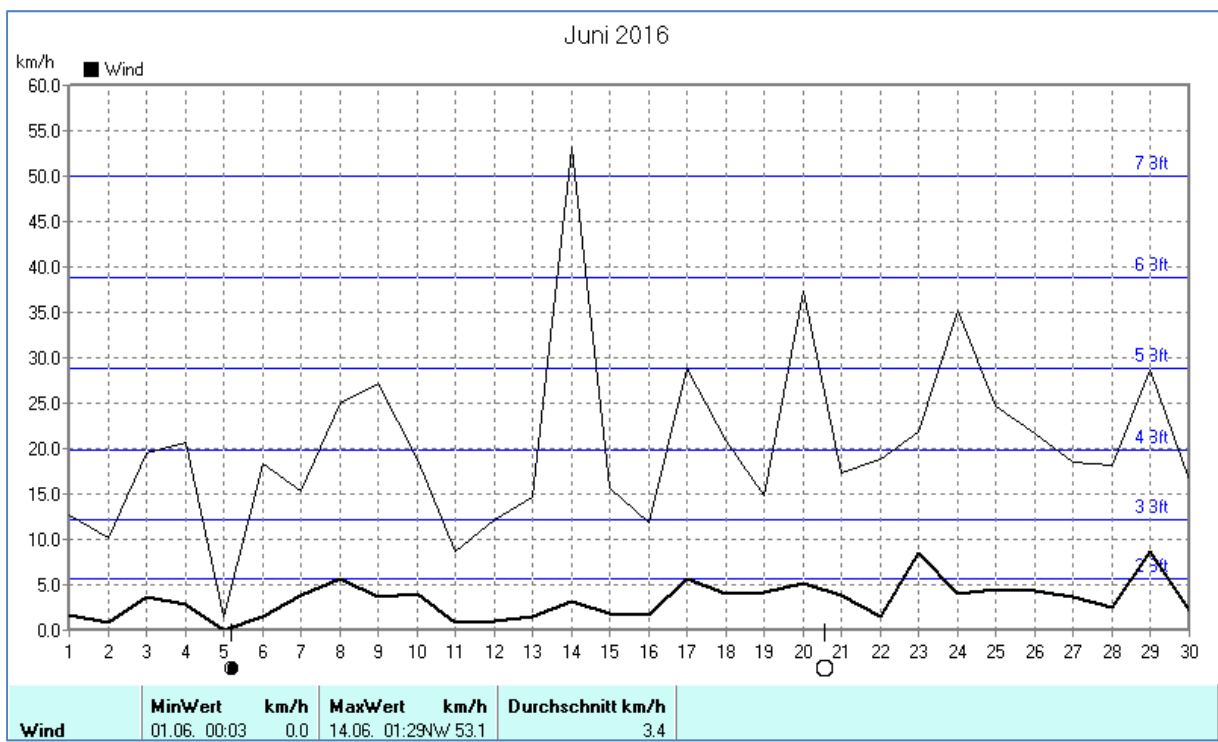
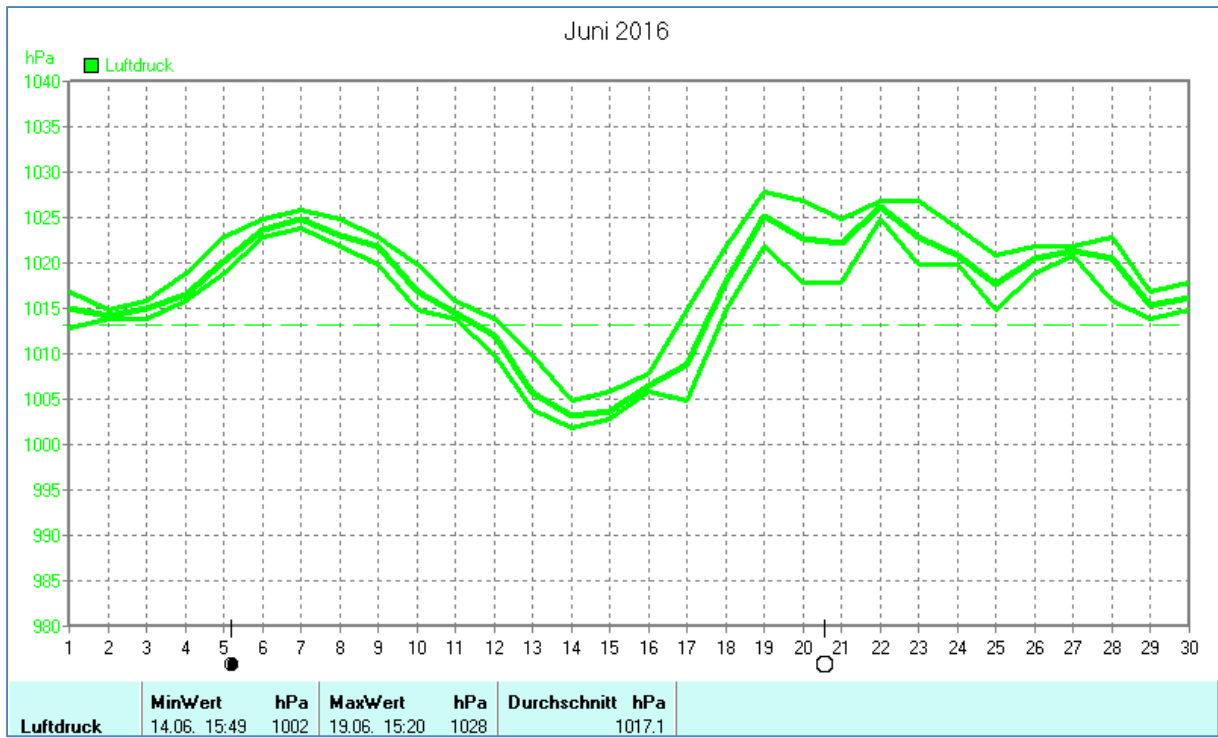


Wettertabelle und Grafiken Juni 2016 Station Dahl

Wetterdaten Juni 2016 Station Dahl							
Meßgröße	Minimum	Zeit	Datum	Maximum	Zeit	Datum	Durchschnitt
Temperatur	8,4 °C	04:39	20.06.2016	31,8 °C	16:49	23.06.2016	17,3 °C
Bodentemp.	6,9 °C	04:29	20.06.2016	40,4 °C	18:00	23.06.2016	17,9 °C
Luftfeuchte	39 %	15:18	10.06.2016	83 %	08:09	25.06.2016	72 %
Luftdruck	998 hPa	15:49	14.06.2016	1025 hPa	15:20	19.06.2016	1017 hPa
Wind km/h				53,1 km/h	01:29	14.06.2016	3,4 km/h
Wind °				N-NW	01:29	14.06.2016	N
Regen l/m ²				42,5 l/m ²	07:20	25.06.2016	#128,160 l/m ²
Sonne h				15:39 h	21:29	23.06.2016	#266:40 h

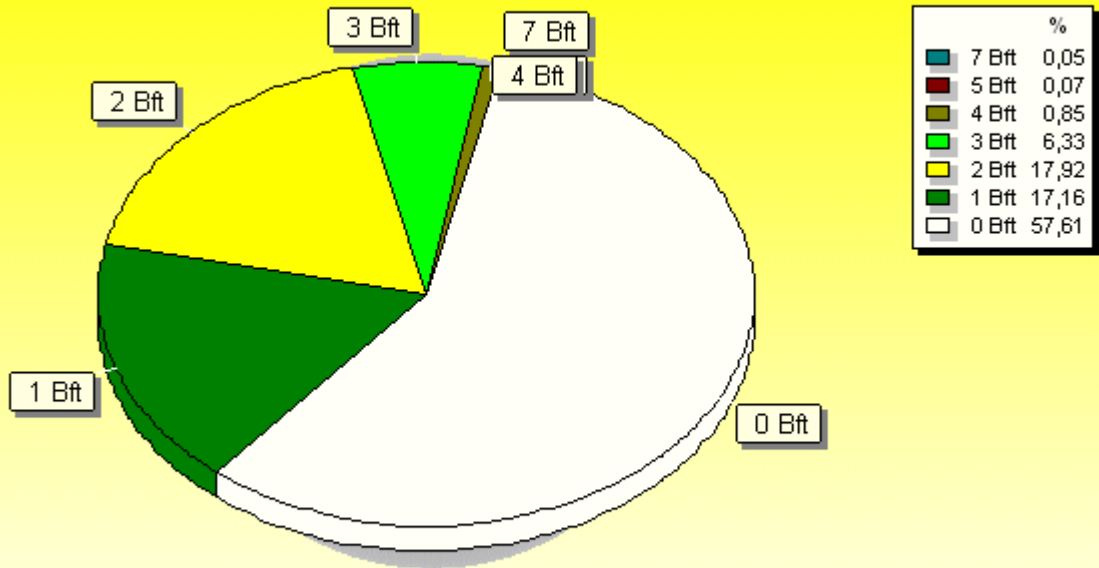






Verteilung Windstärke Juni 2016

Paderborn - Dahl, Vossberg

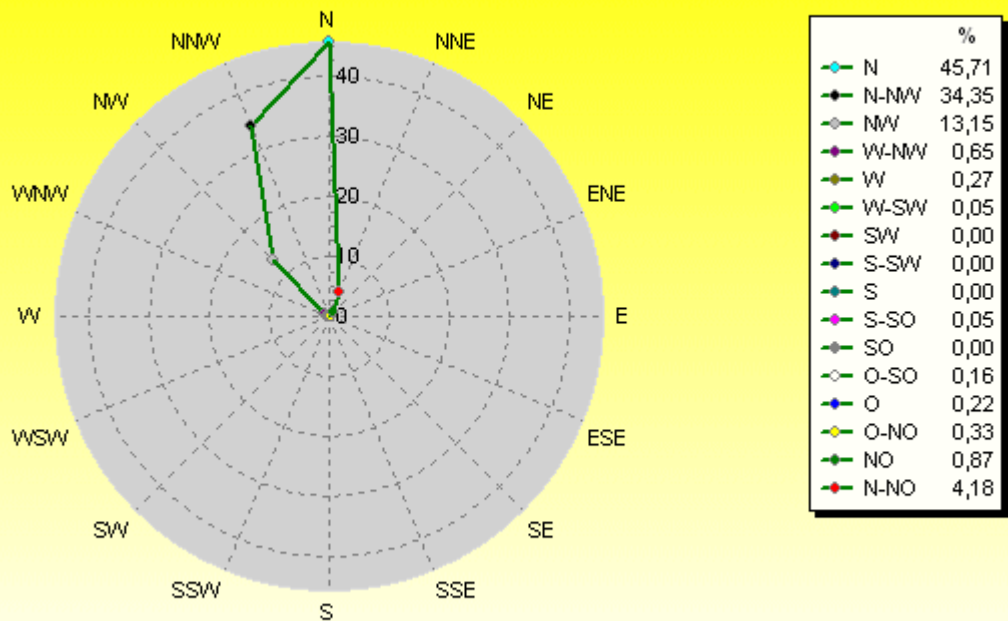


4341 Werte - Ø 3,4km/h - Max. 53,1km/h

© WzWin32

Verteilung Windrichtung Juni 2016

Paderborn - Dahl, Vossberg



1840 / 2501 Werte -> 57.6% Windstille - Ø 3,4km/h - Max. 53,1km/h

© WzWin32

