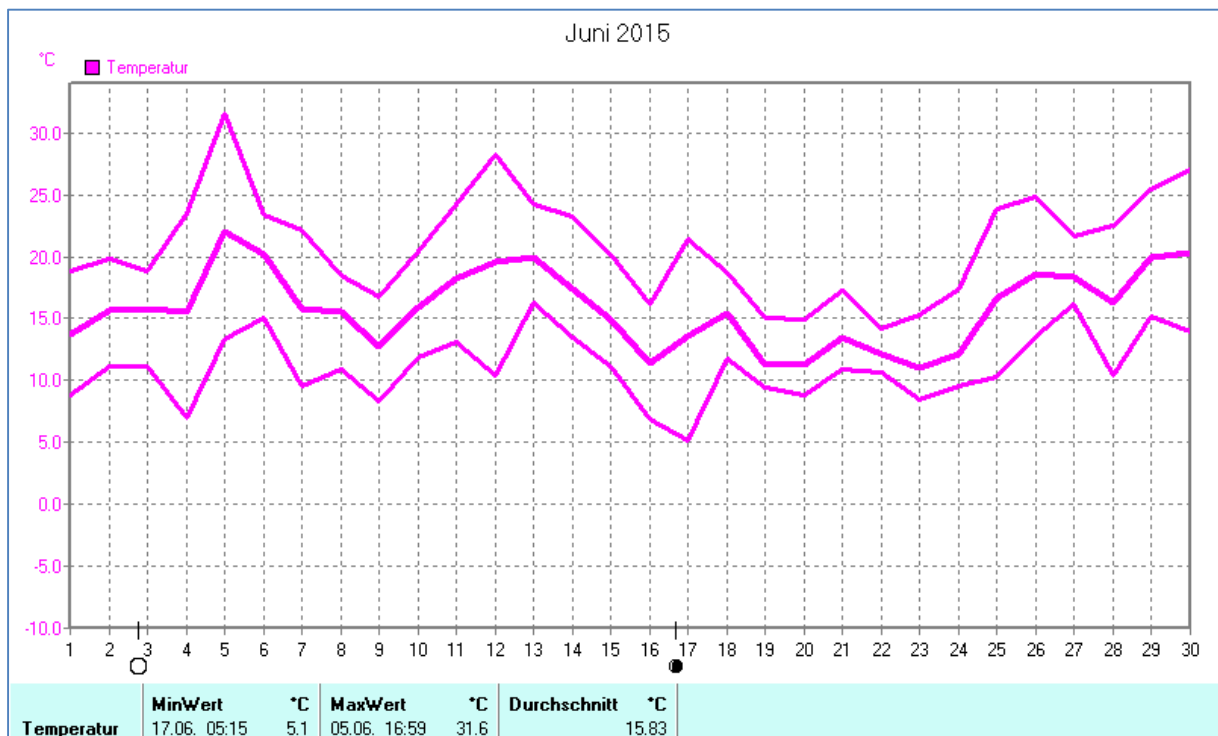
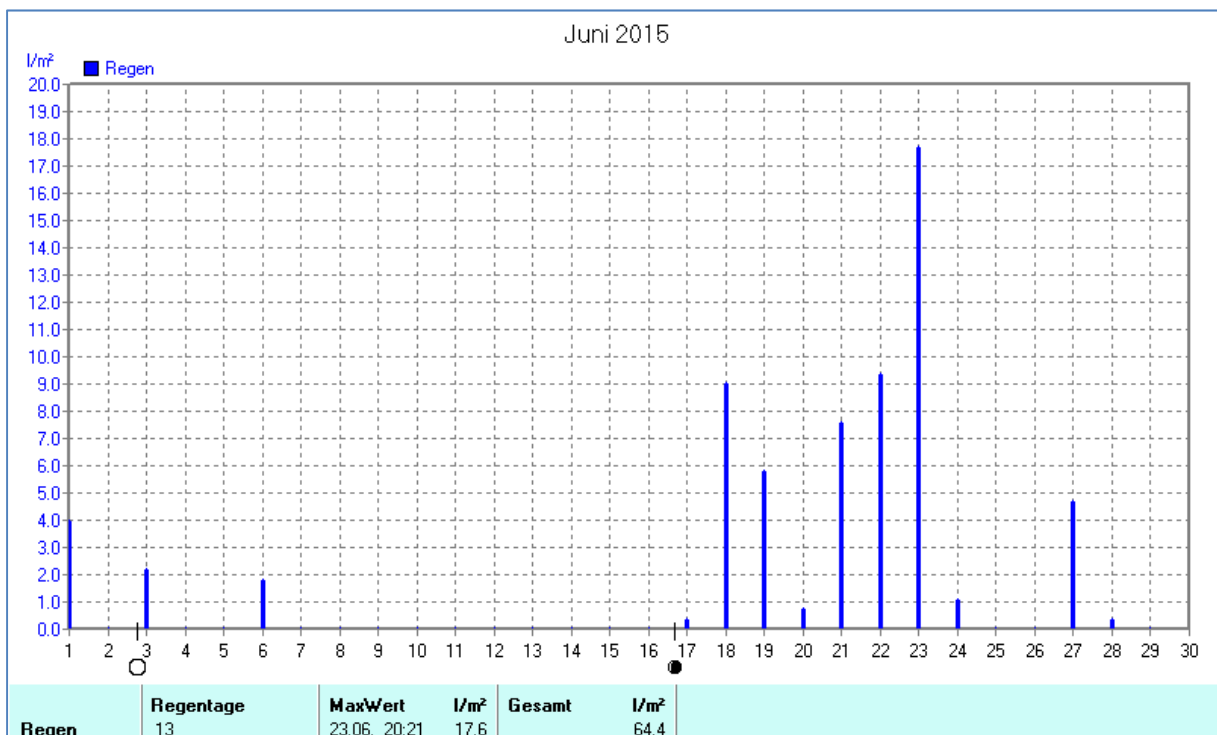
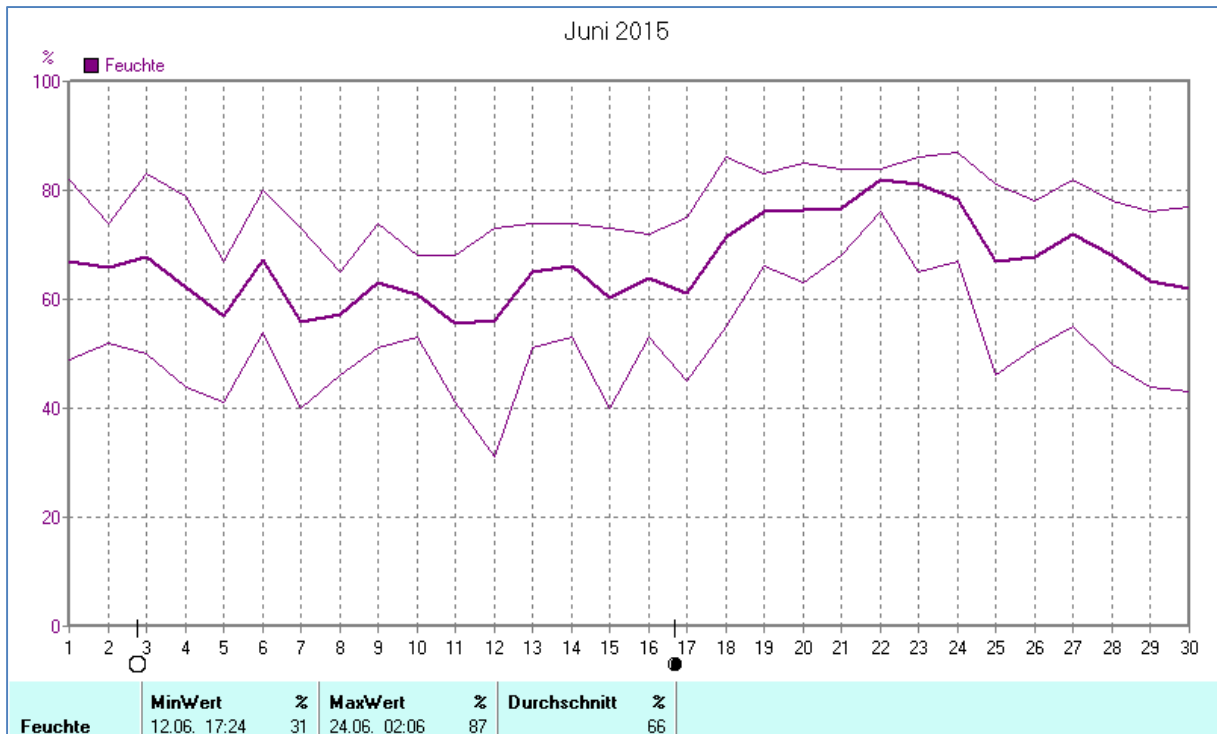
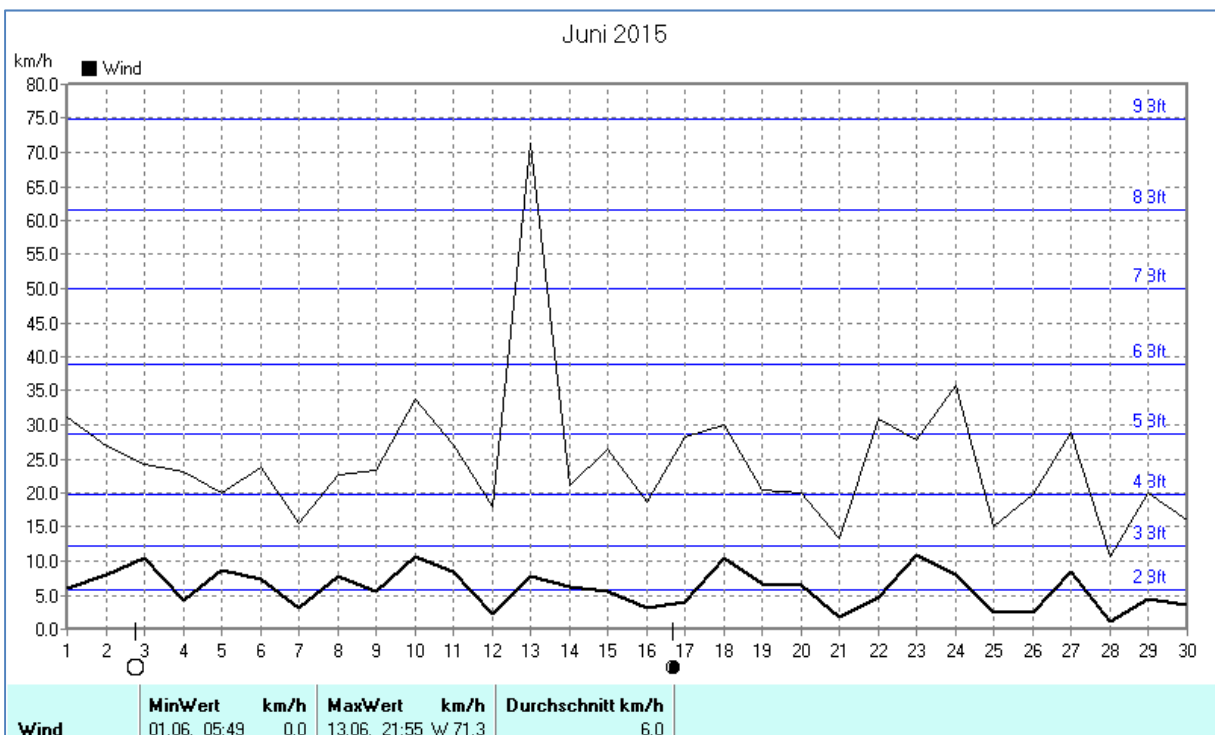
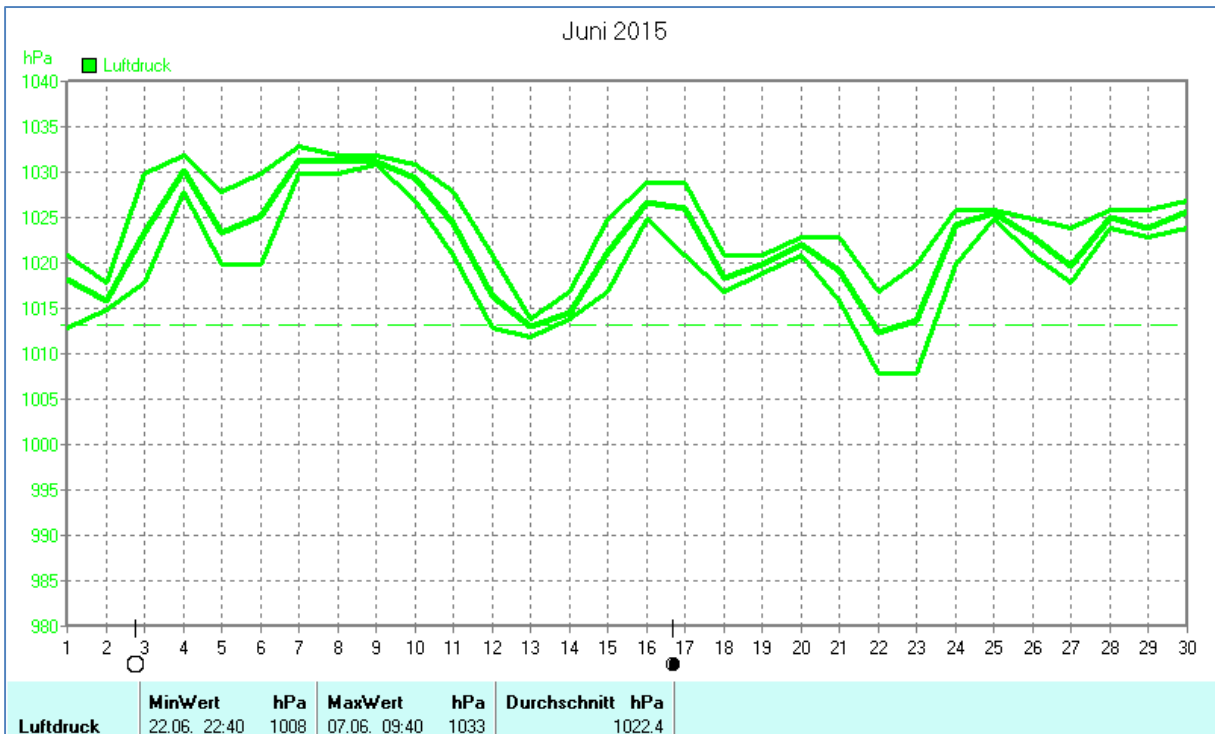


## Wettertabelle und Grafiken Juni 2015 Station Dahl

<b>Wetterdaten Juni 2015 Station Dahl</b>							
Meßgröße	Minimum	Zeit	Datum	Maximum	Zeit	Datum	Durchschnitt
Temperatur	5,1 °C	05:14	17.06.2015	31,6 °C	17:04	05.06.2015	15,8 °C
Bodentemp.	4,4 °C	05:04	17.06.2015	46,0 °C	18:00	12.06.2015	17,1 °C
Luftfeuchte	32 %	17:20	12.06.2015	87 %	02:22	24.06.2015	67 %
Luftdruck	1001 hPa	22:50	22.06.2015	1026 hPa	09:45	07.06.2015	1016 hPa
Wind km/h				53,8 km/h	21:50	10.06.2015	6,0 km/h
Wind °				O-NO	21:50	10.06.2015	W
Regen l/m <sup>2</sup>				17,6 l/m <sup>2</sup>	20:32	23.06.2015	#64,440 l/m <sup>2</sup>
Sonne				15:41 h	21:25	07.06.2015	#294:42 h

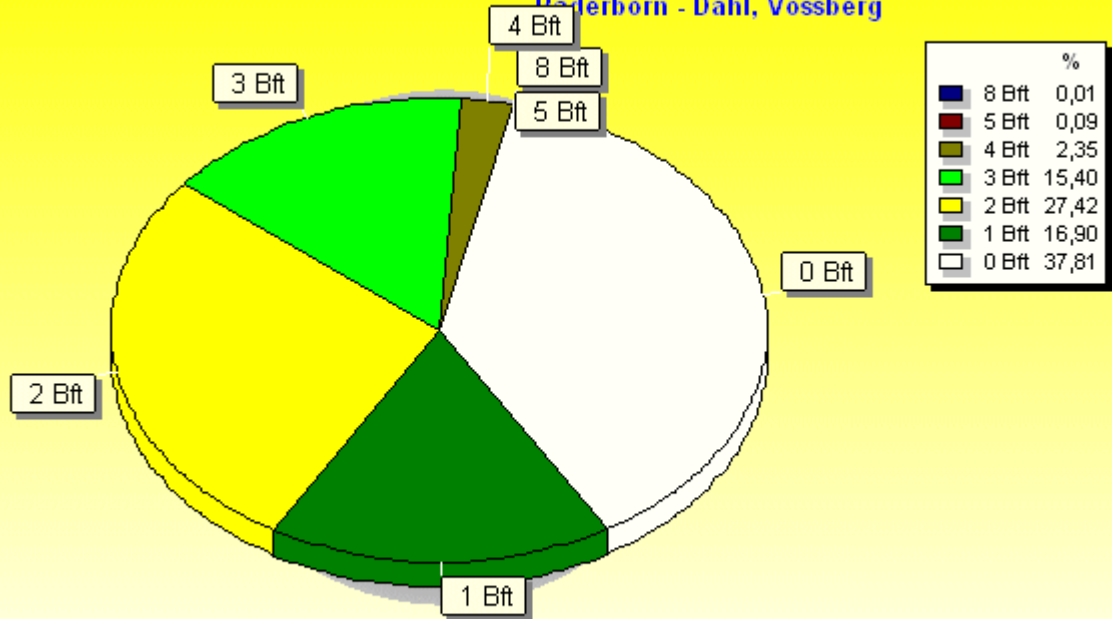






### Verteilung Windstärke Juni 2015

Paderborn - Dahl, Vossberg

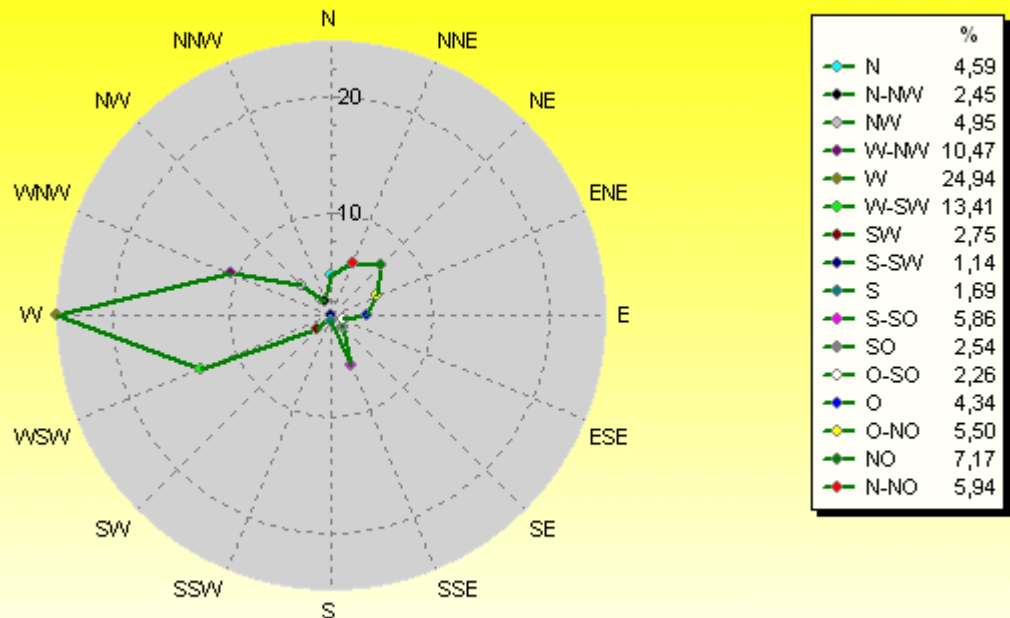


7603 Werte - Ø 6,0km/h - Max. 71,3km/h

© WzWin32

### Verteilung Windrichtung Juni 2015

Paderborn - Dahl, Vossberg



4728 / 2875 Werte -> 37.8% Windstille - Ø 6,0km/h - Max. 71,3km/h

© WzWin32

