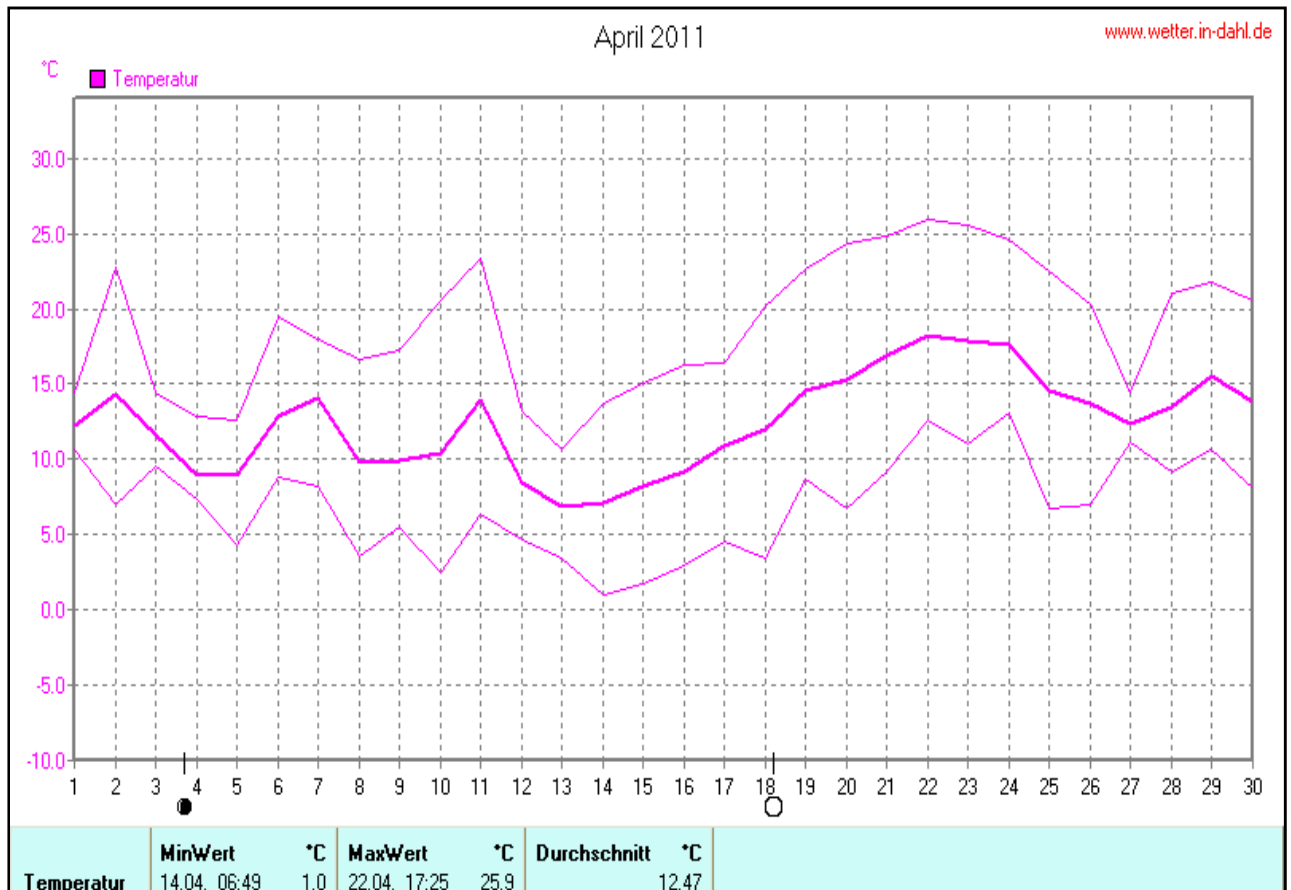


## Wettertabelle und Grafiken April 2011 Station Dahl

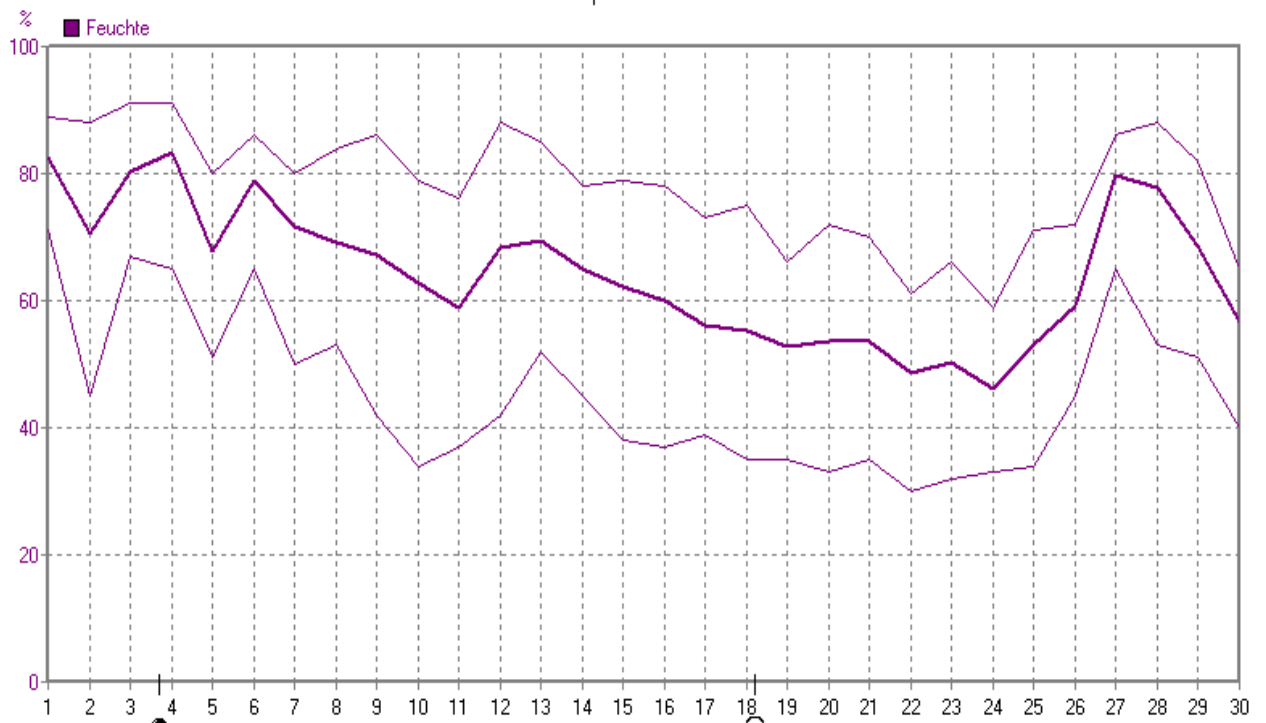
### Wetterdaten April 2011 Station Dahl

Meßgröße	Minimum	Zeit	Datum	Maximum	Zeit	Datum	Durchschnitt
Temperatur (2m)	1,0 °C	06:49	14.04.2011	25,9 °C	17:25	22.04.2011	12,5 °C
Bodentemp. (5cm ü.B.)	-0,4 °C	06:44	14.04.2011	28,9 °C	17:15	22.04.2011	12,2 °C
Luftfeuchte	30%	16:10	22.04.2011	91%	23:17	03.04.2011	64%
Luftdruck	1010 hPa	02:46	03.04.2011	1026 hPa	12:33	06.04.2011	1018 hPa
Windgeschwindigkeit				43,6 km/h	04:44	12.04.2011	11,6 km/h
Windrichtung				W-NW	04:44	12.04.2011	S-SO
Regenmenge				13,2 l/m <sup>2</sup>	17:22	03.04.2011	#32,100 l/m <sup>2</sup>
Sonnenschein-Zeit				13,68 h	20:19	24.04.2011	#264:08 h



April 2011

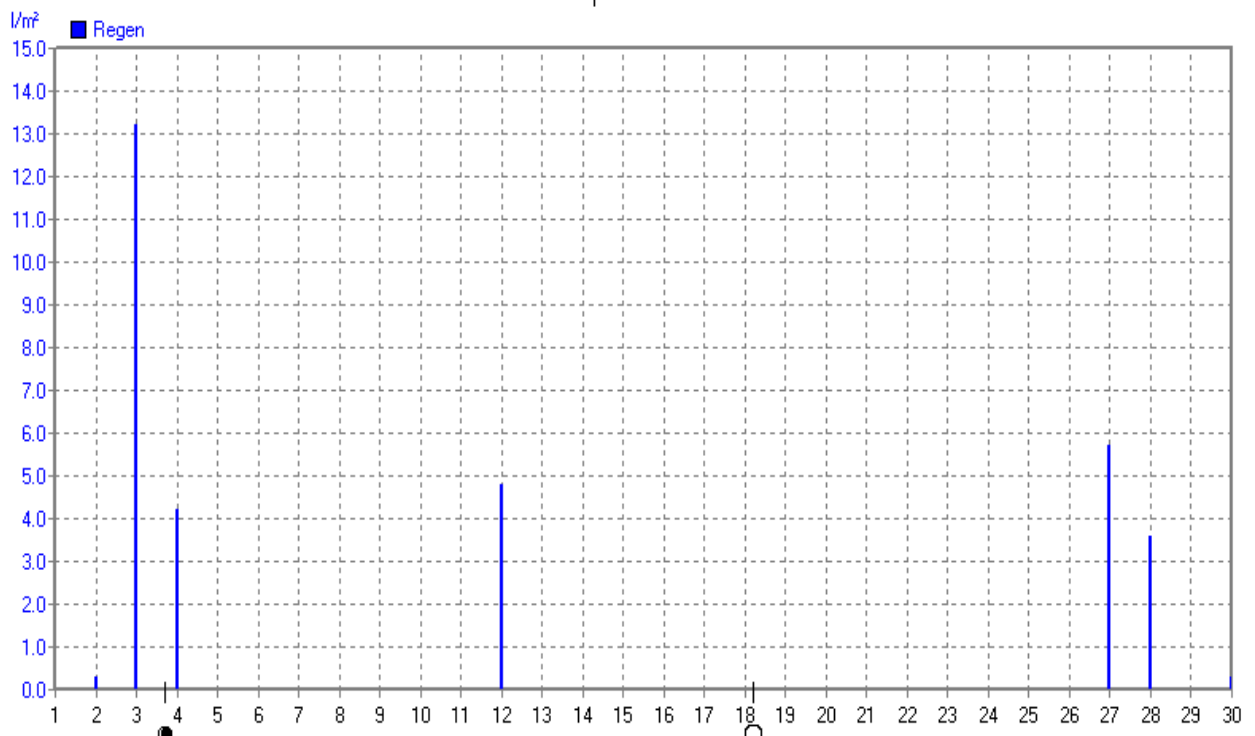
www.wetter.in-dahl.de



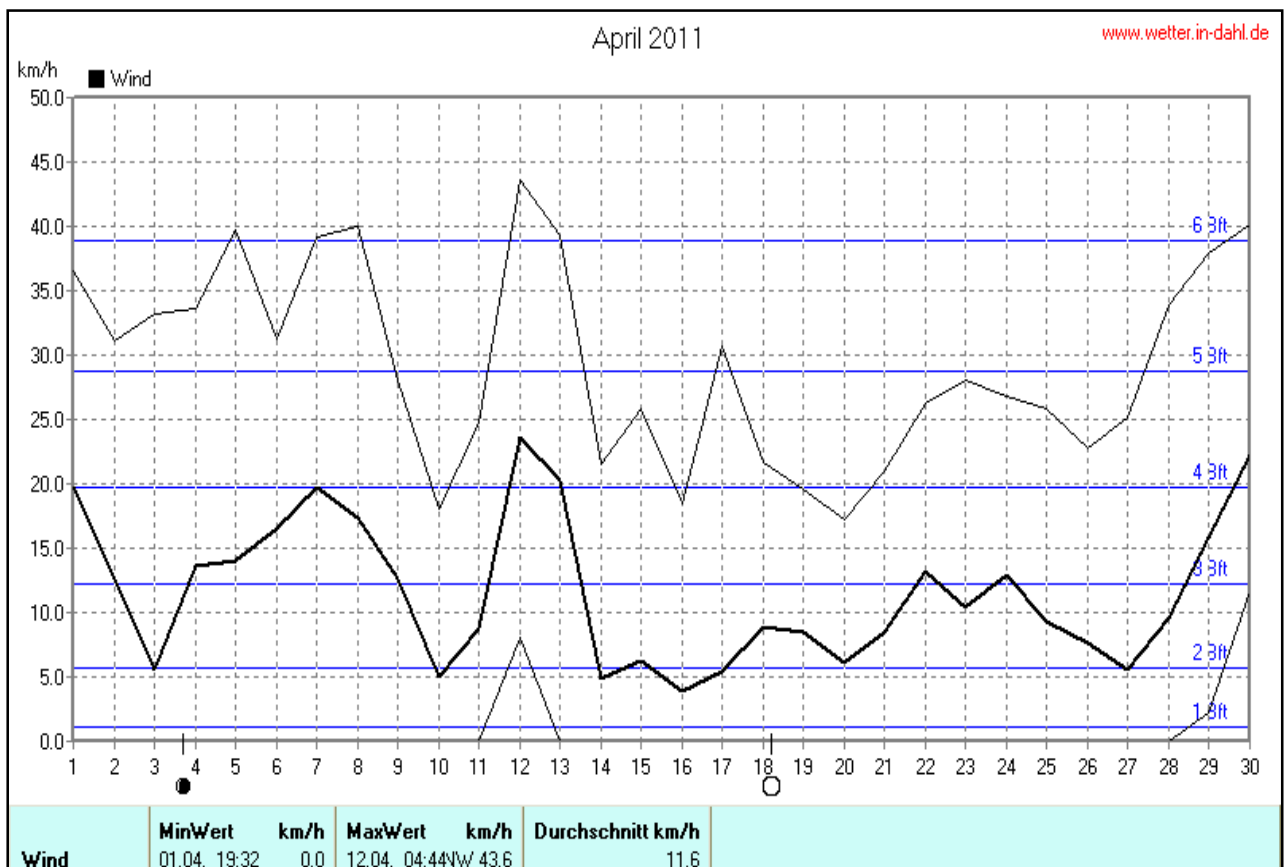
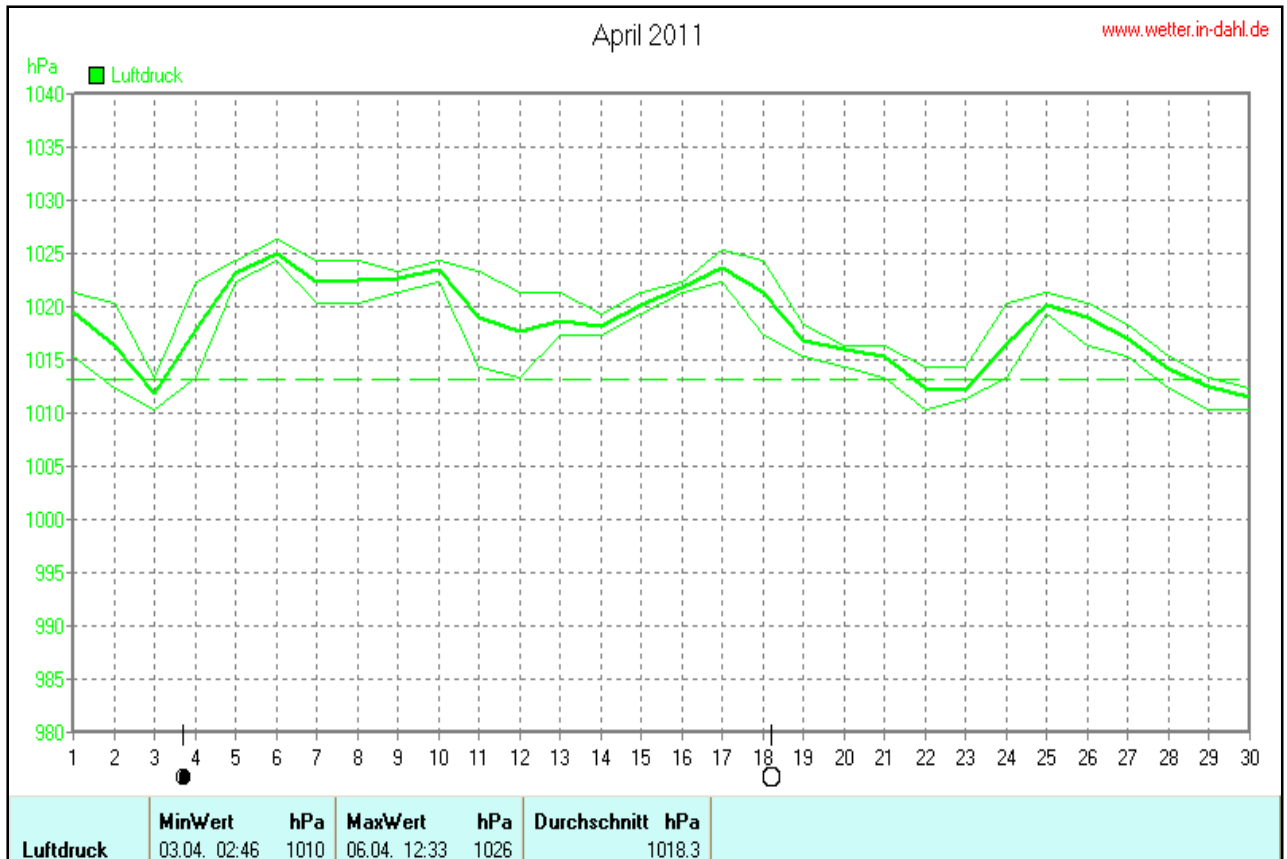
Feuchte	MinWert	%	MaxWert	%	Durchschnitt	%
	22.04. 16:10	30	03.04. 23:17	91		64

April 2011

www.wetter.in-dahl.de

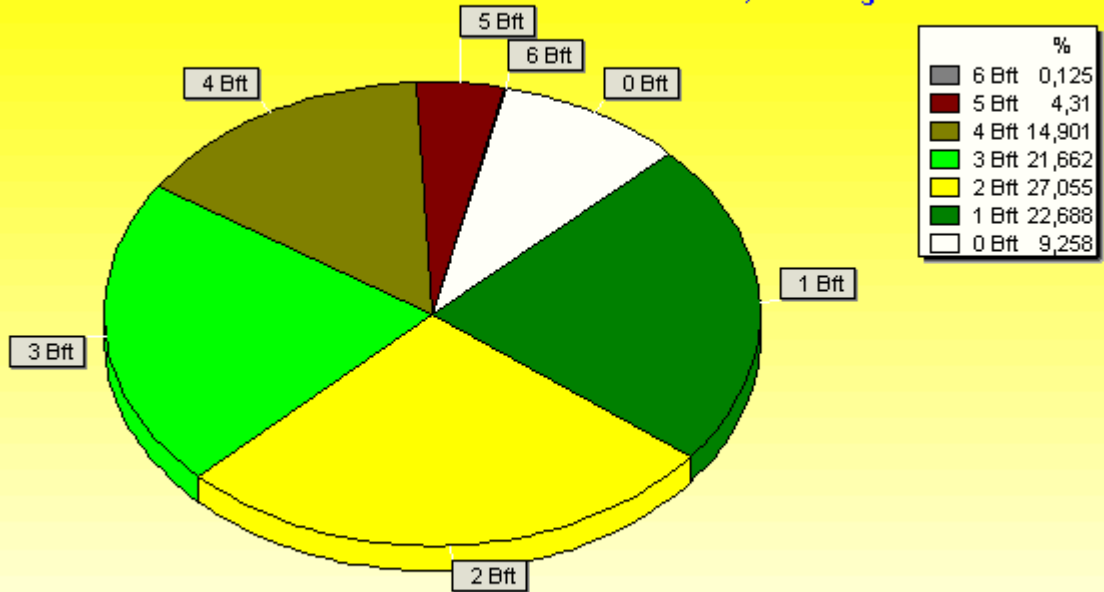


Regen	Regentage	MaxWert	l/m²	Gesamt	l/m²
	7	03.04. 17:22	13.2		32.1



### Verteilung Windstärke April 2011

Paderborn - Dahl, Vossberg

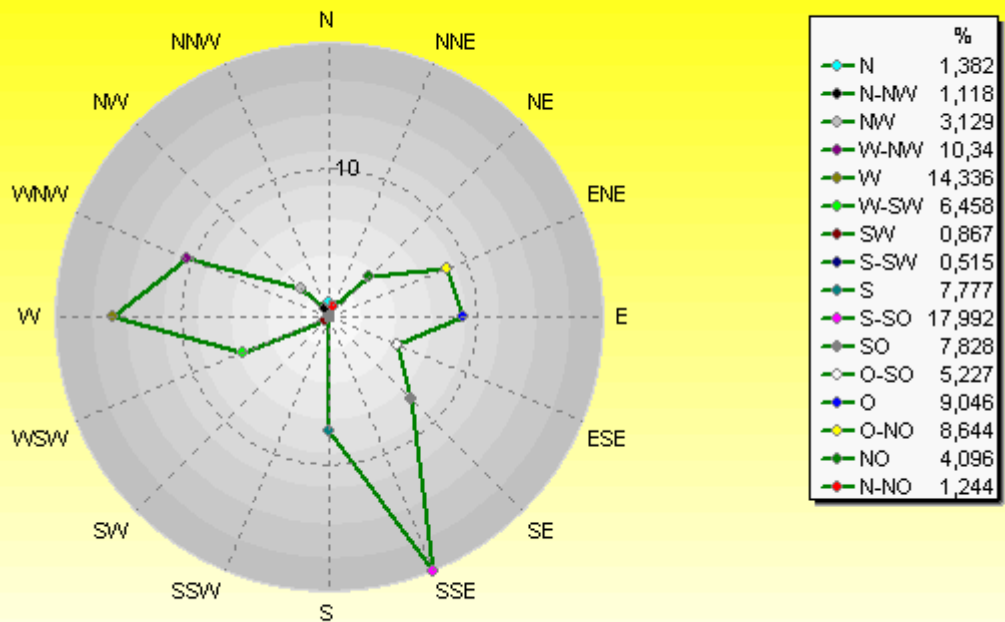


8771 Werte - Ø 11,6km/h - Max. 43,6km/h

© WzWin32

### Verteilung Windrichtung April 2011

Paderborn - Dahl, Vossberg



7959 / 812 Werte -> 9.3% Windstille - Ø 11,6km/h - Max. 43,6km/h

© WzWin32

