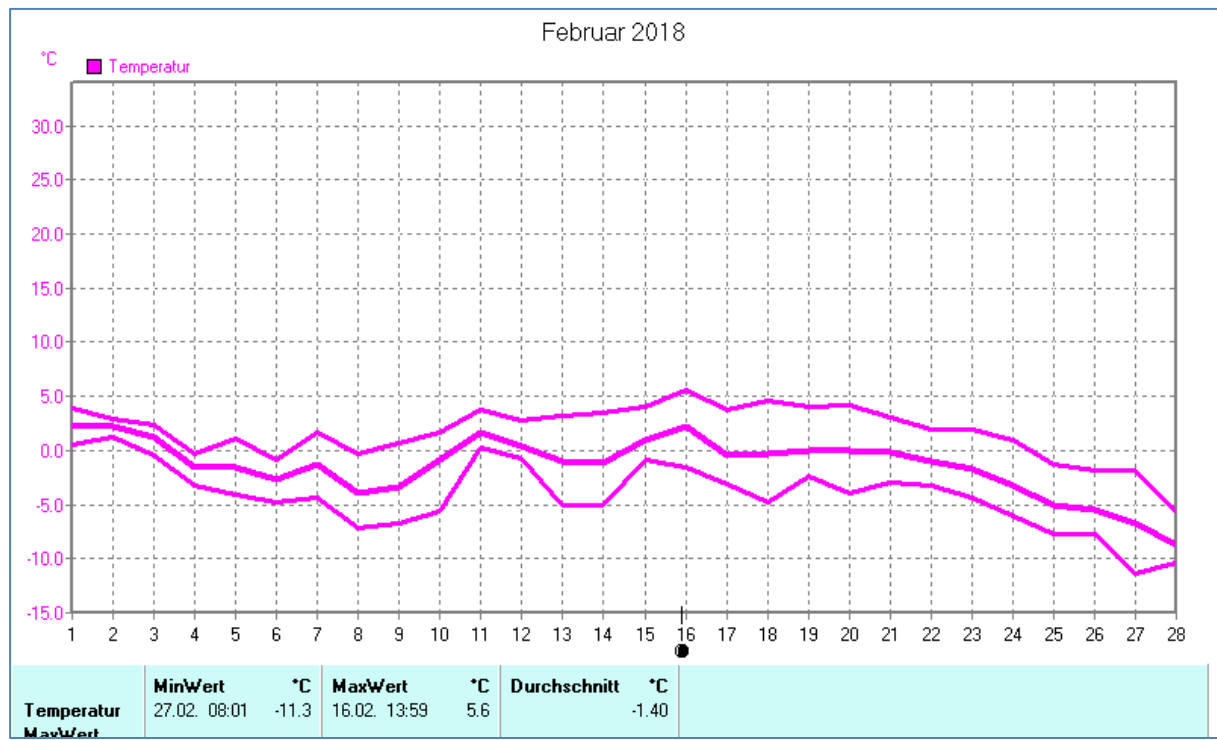
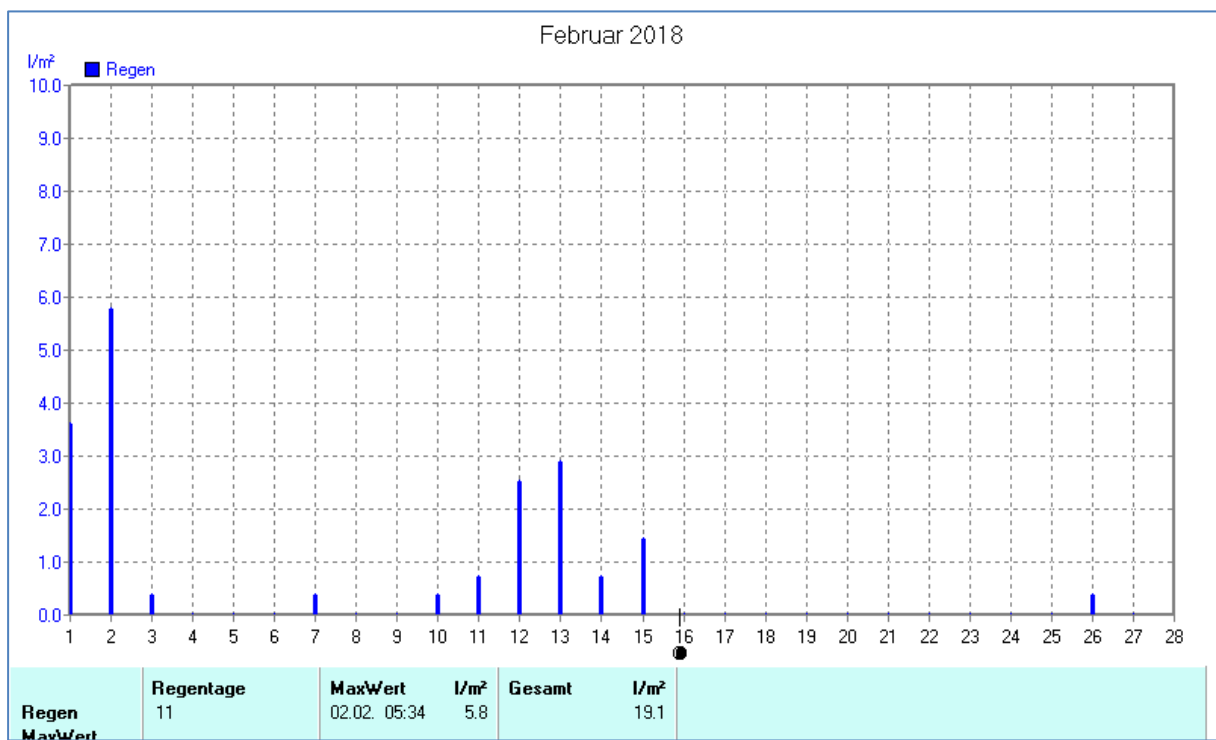
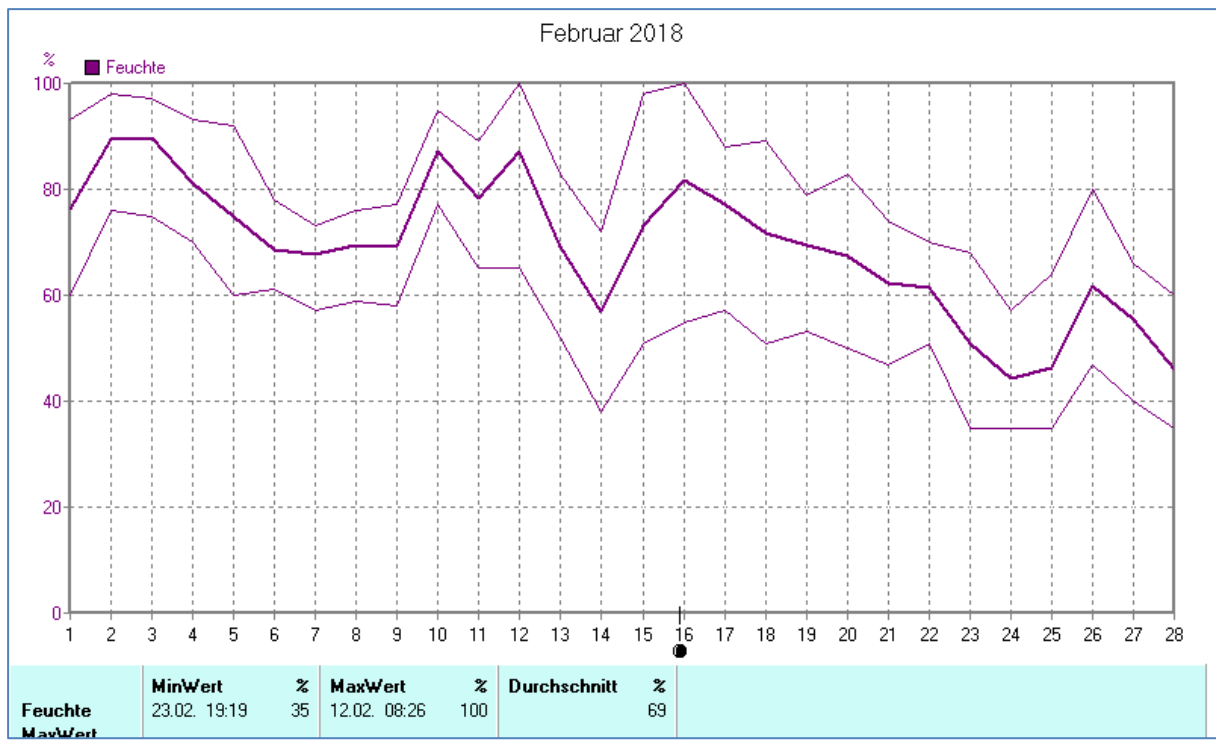
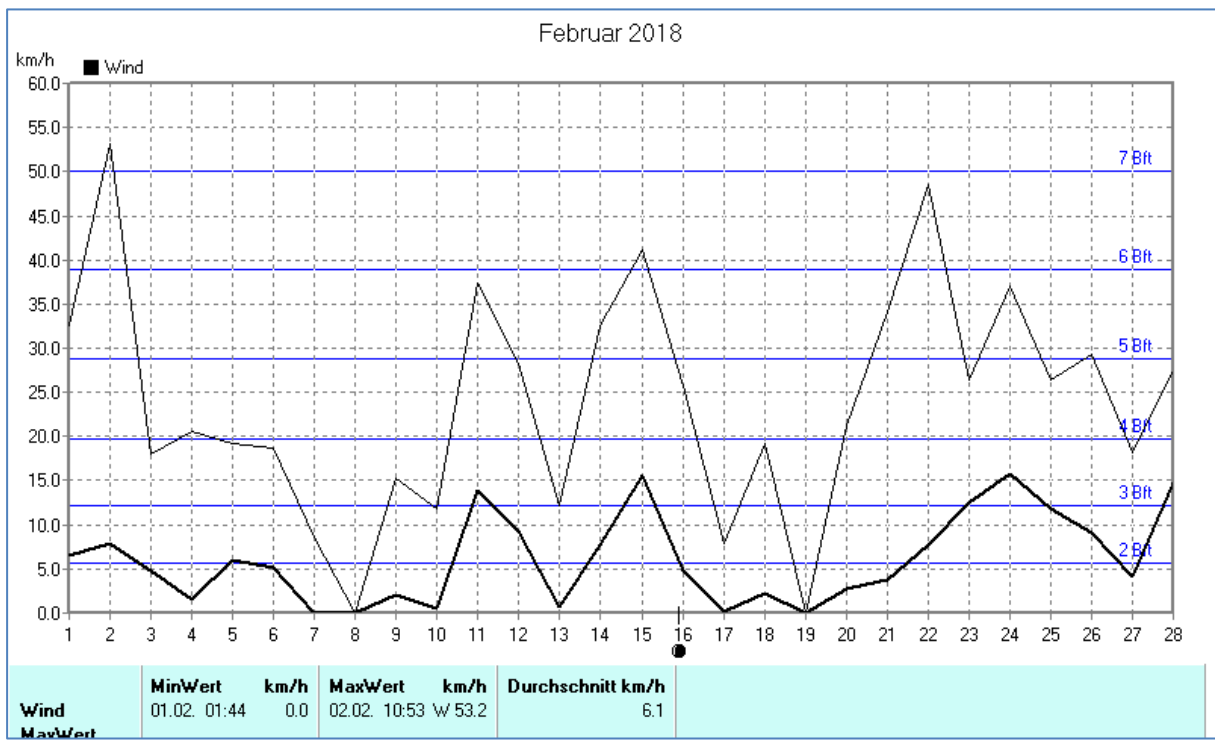
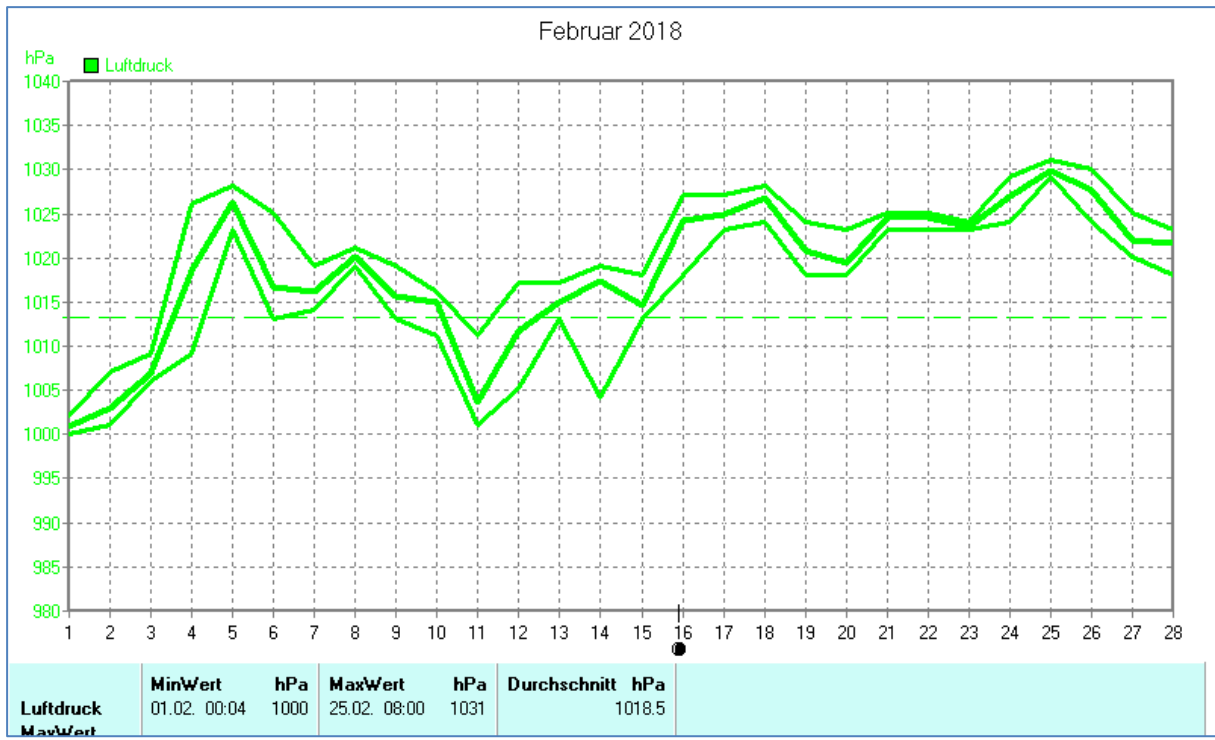


Wettertabelle und Grafiken Februar 2018 Station Dahl

Wetterdaten Februar 2018 Station Dahl							
Meßgröße	Minimum	Zeit	Datum	Maximum	Zeit	Datum	Durchschnitt
Temperatur	-11,3 °C	08:01	27.02.2018	5,6 °C	13:59	16.02.2018	-1,4 °C
Bodentemp.	-12,8 °C	04:01	27.02.2018	7,2 °C	16:29	20.02.2018	-1,7 °C
Luftfeuchte	35 %	19:19	23.02.2018	100 %	08:26	12.02.2018	69 %
Luftdruck	1000 hPa	00:04	01.02.2018	1031 hPa	08:00	25.02.2018	1019 hPa
Wind km/h				53,2 km/h	10:53	02.02.2018	6,1 km/h
Wind °				W	10:53	02.02.2018	N
Regen l/m²				5,8 l/m²	05:34	02.02.2018	#19,080 l/m²
Sonne h				5:50 h	17:01	27.02.2018	#81:16 h

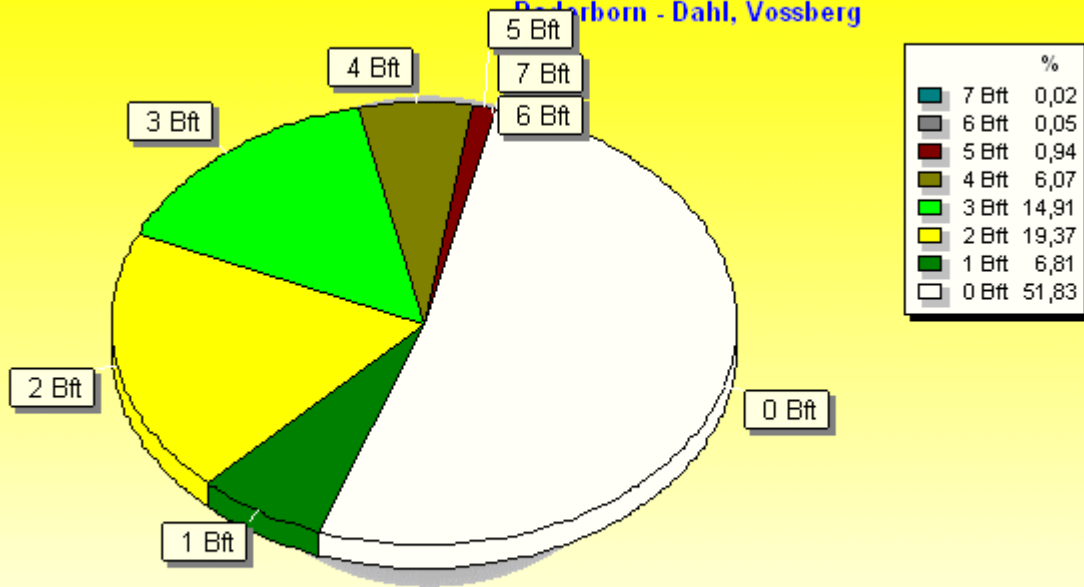






Verteilung Windstärke Februar 2018

Paderborn - Dahl, Vossberg

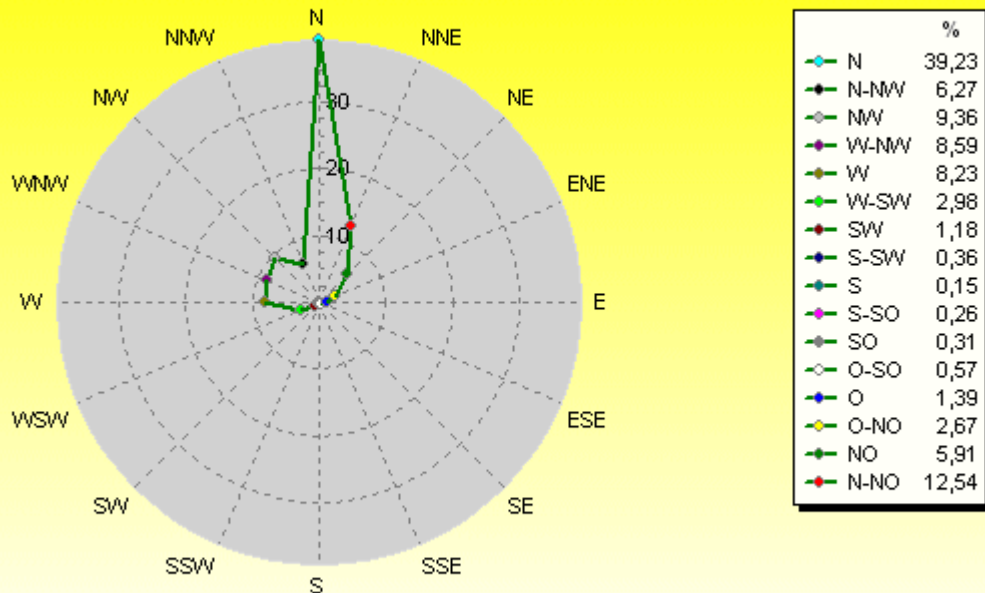


4038 Werte - Ø 6,1km/h - Max. 53,2km/h

© WzWin32

Verteilung Windrichtung Februar 2018

Paderborn - Dahl, Vossberg



1945 / 2093 Werte -> 51.8% Windstille - Ø 6,1km/h - Max. 53,2km/h

© WzWin32

