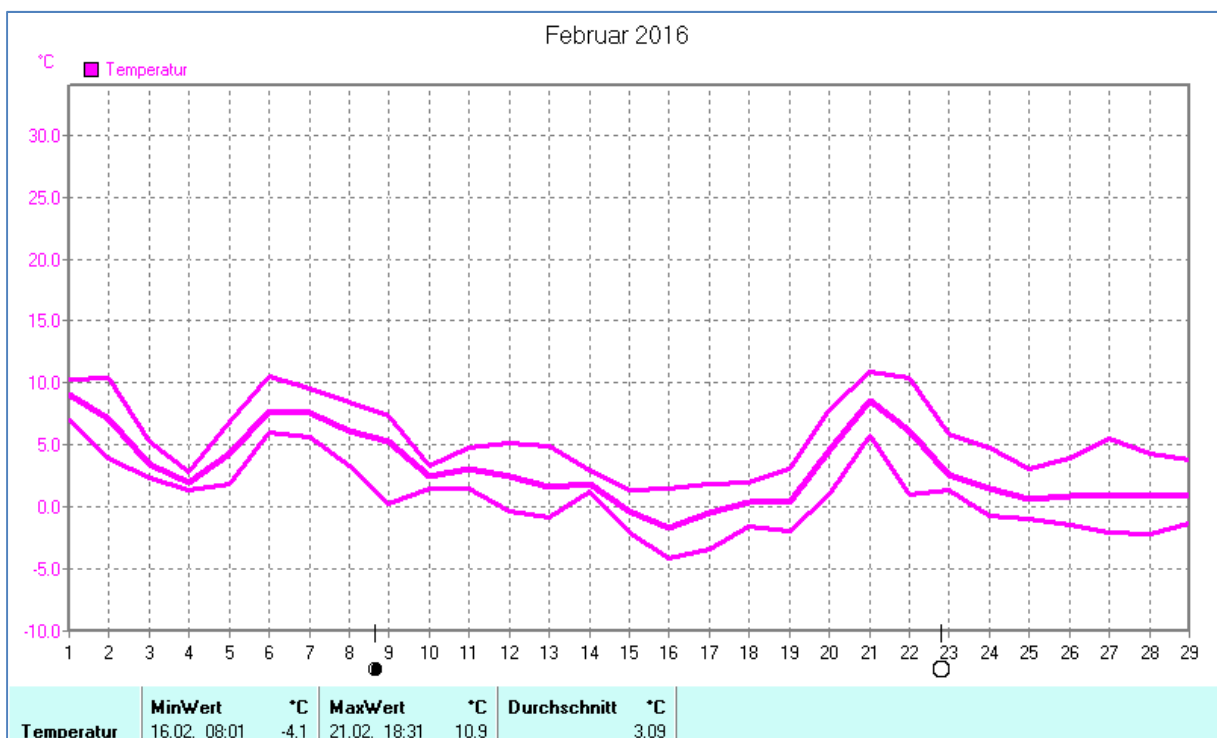
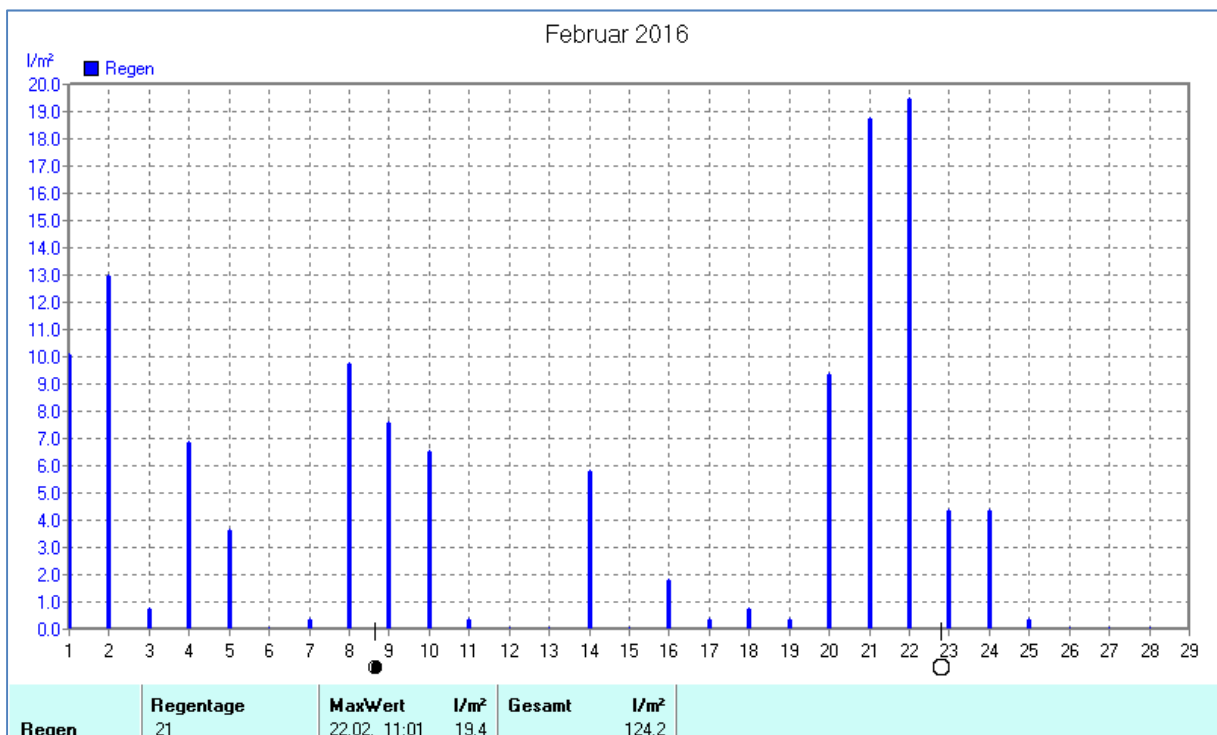
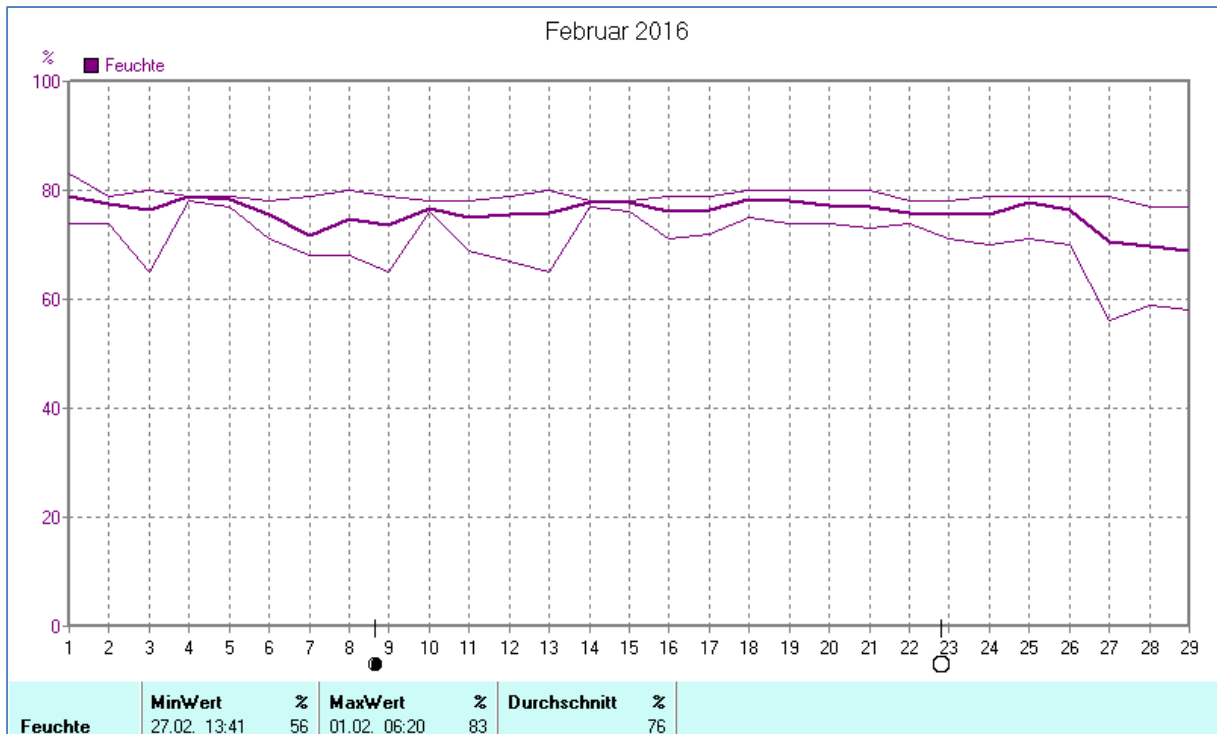
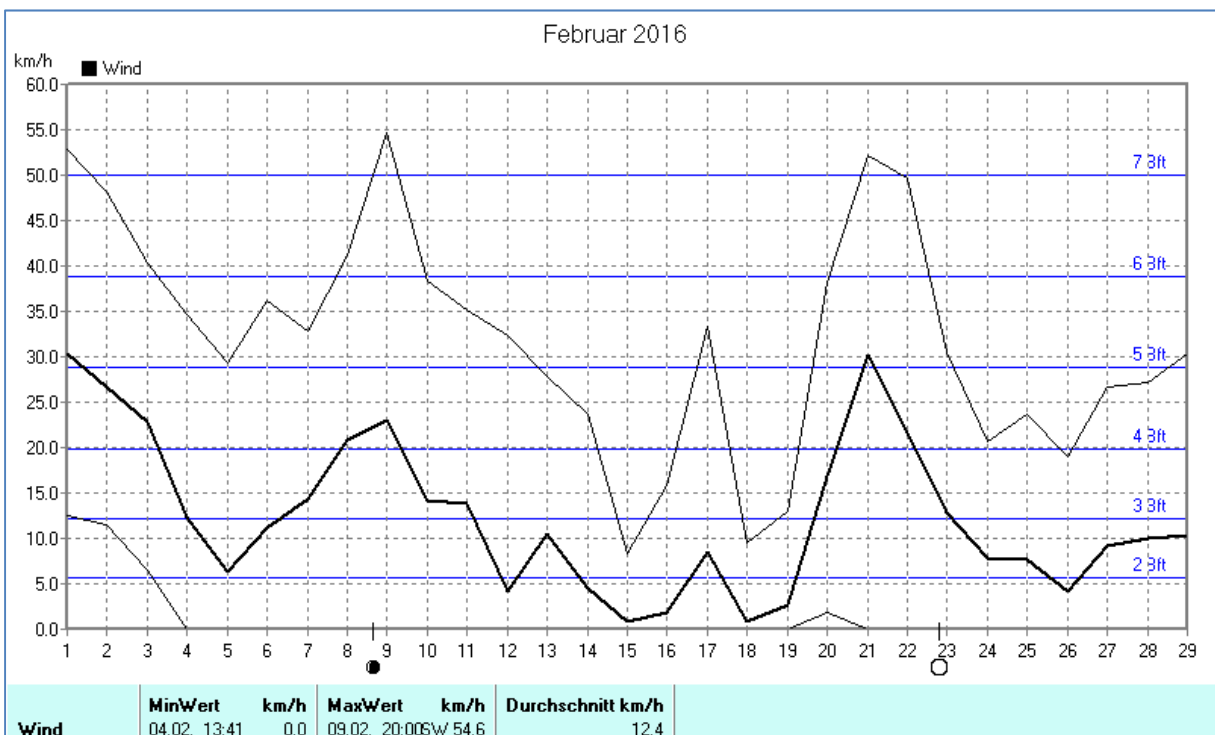
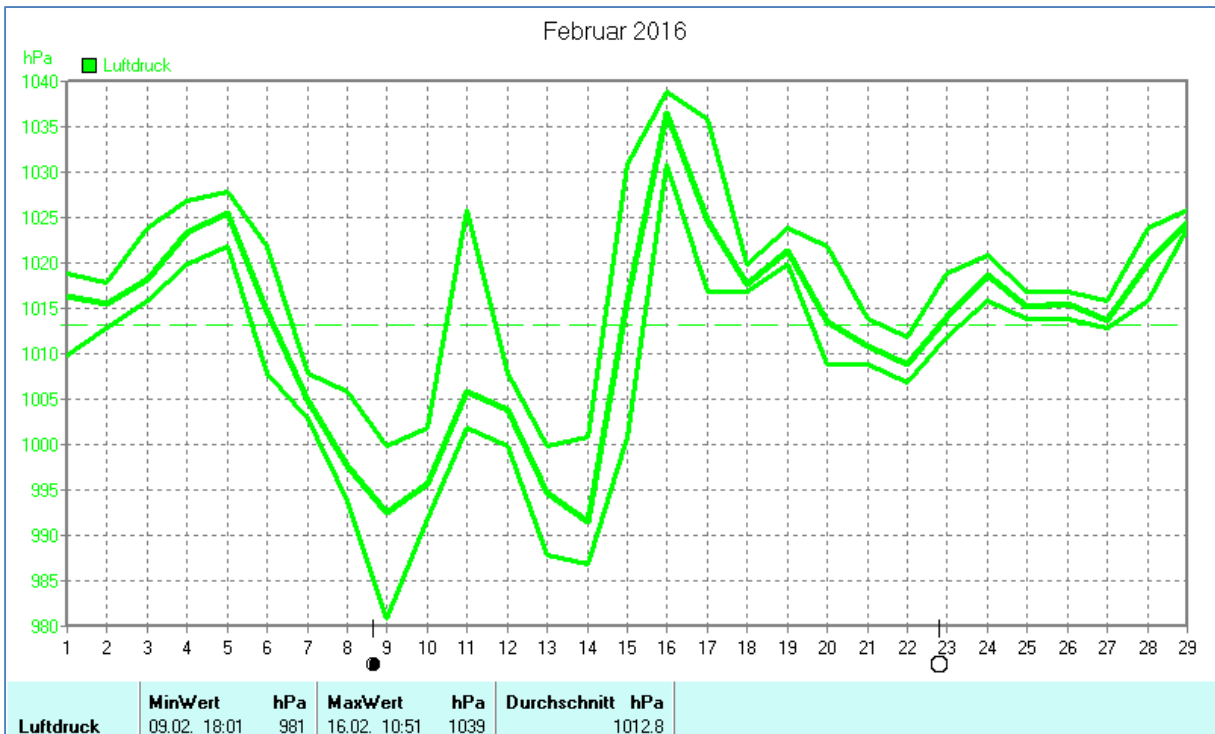


Wettertabelle und Grafiken Februar 2016 Station Dahl

<u>Wetterdaten Februar 2016 Station Dahl</u>							
Meßgröße	Minimum	Zeit	Datum	Maximum	Zeit	Datum	Durchschnitt
Temperatur	-4,1 °C	08:01	16.02.2016	10,9 °C	18:31	21.02.2016	3,1 °C
Bodentemp.	-5,8 °C	07:11	16.02.2016	10,9 °C	14:20	06.02.2016	3,0 °C
Luftfeuchte	56 %	13:41	27.02.2016	83 %	06:20	01.02.2016	76 %
Luftdruck	981 hPa	18:01	09.02.2016	1039 hPa	10:51	16.02.2016	1013 hPa
Wind km/h				54,6 km/h	20:00	09.02.2016	12,4 km/h
Wind °				W-SW	20:00	09.02.2016	W
Regen l/m ²				19,4 l/m ²	11:01	22.02.2016	#124,200 l/m ²
Sonne h				6:30 h	17:51	29.02.2016	#51:40 h

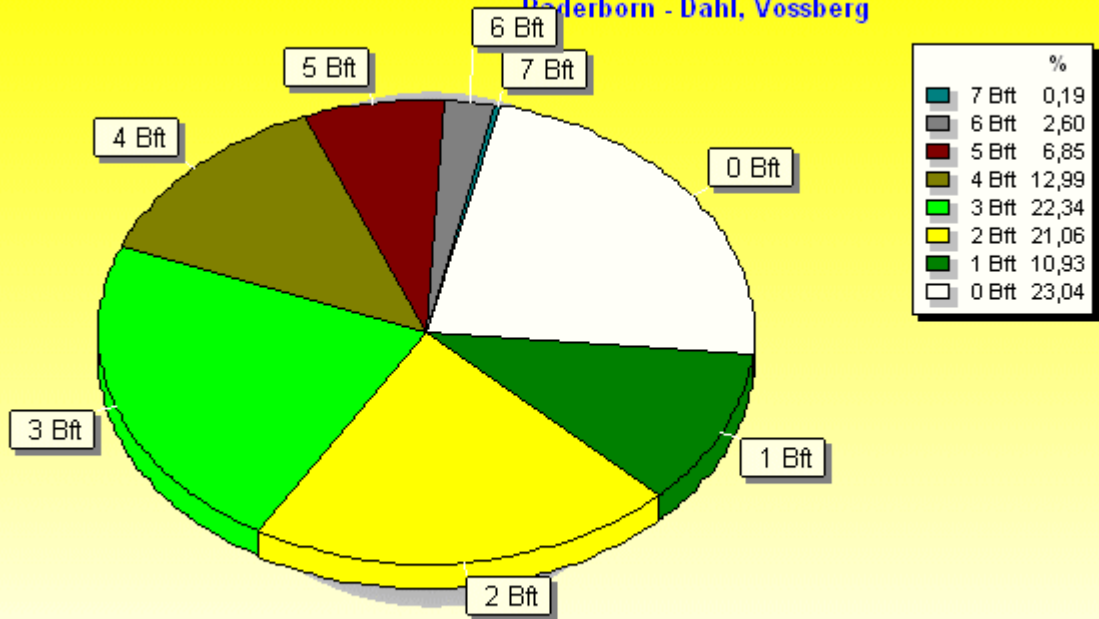






Verteilung Windstärke Februar 2016

Paderborn - Dahl, Vossberg

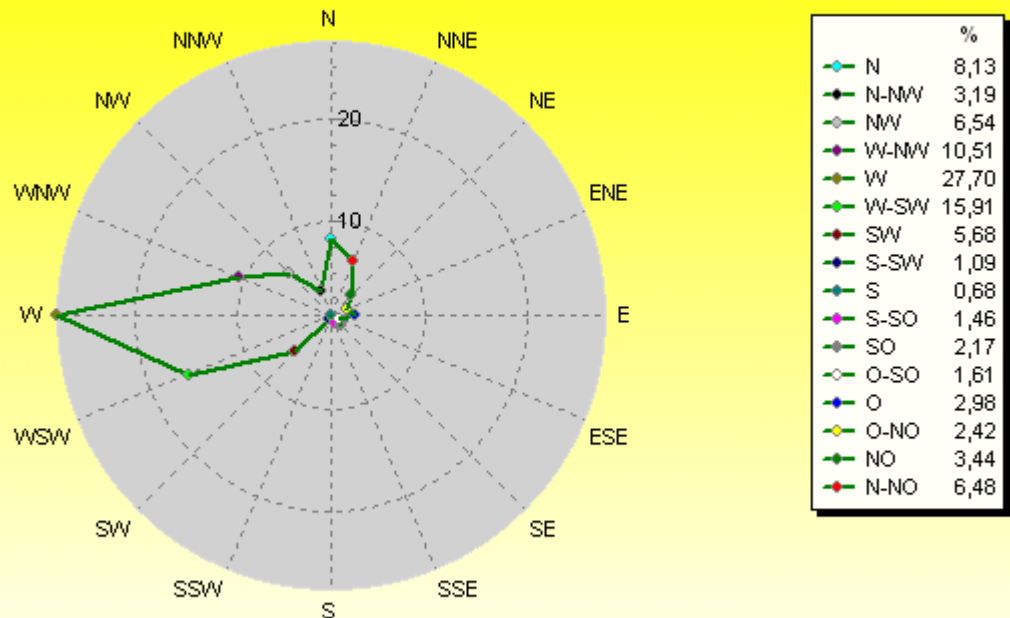


4189 Werte - Ø 12,4km/h - Max. 54,6km/h

© WzWin32

Verteilung Windrichtung Februar 2016

Paderborn - Dahl, Vossberg



3224 / 965 Werte -> 23.0% Windstille - Ø 12,4km/h - Max. 54,6km/h

© WzWin32

