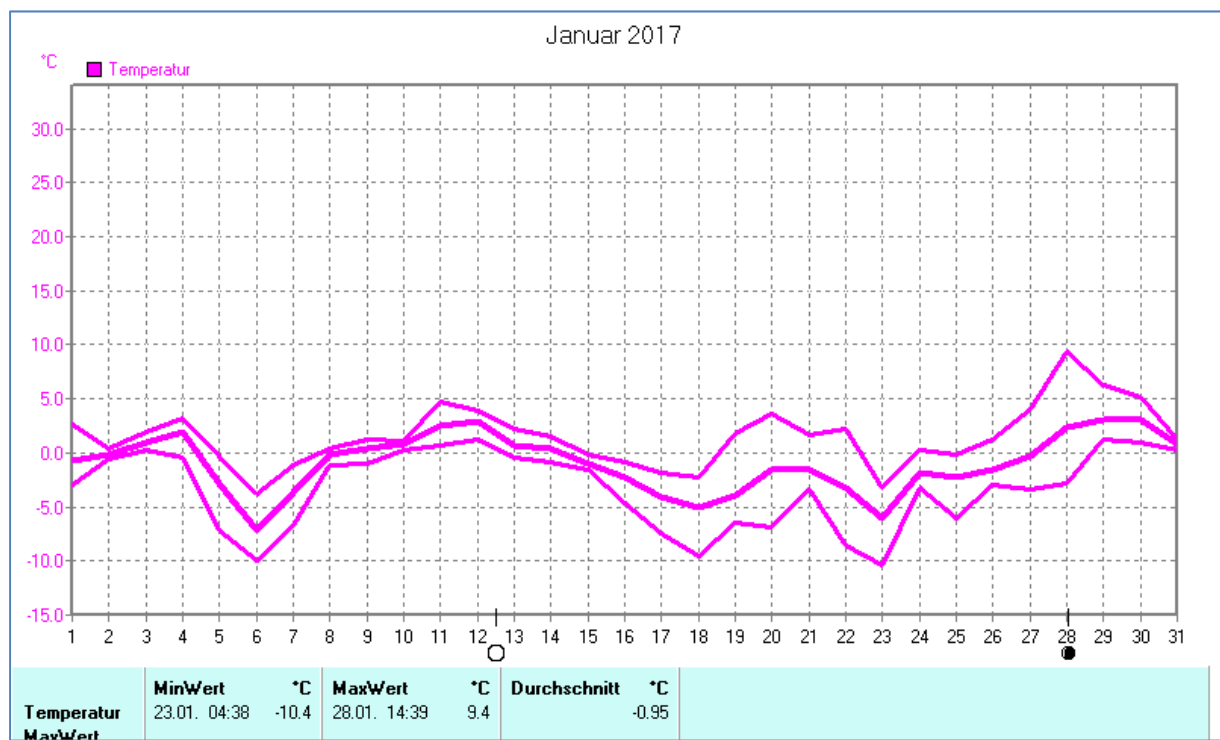
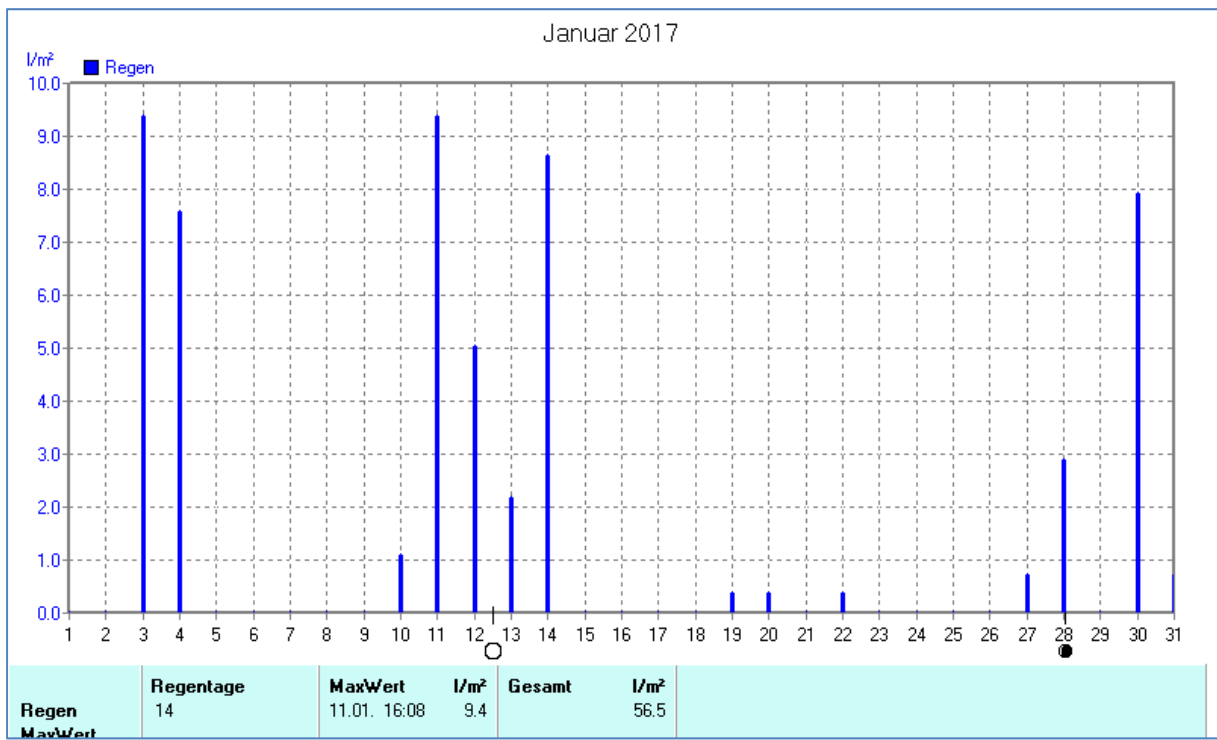
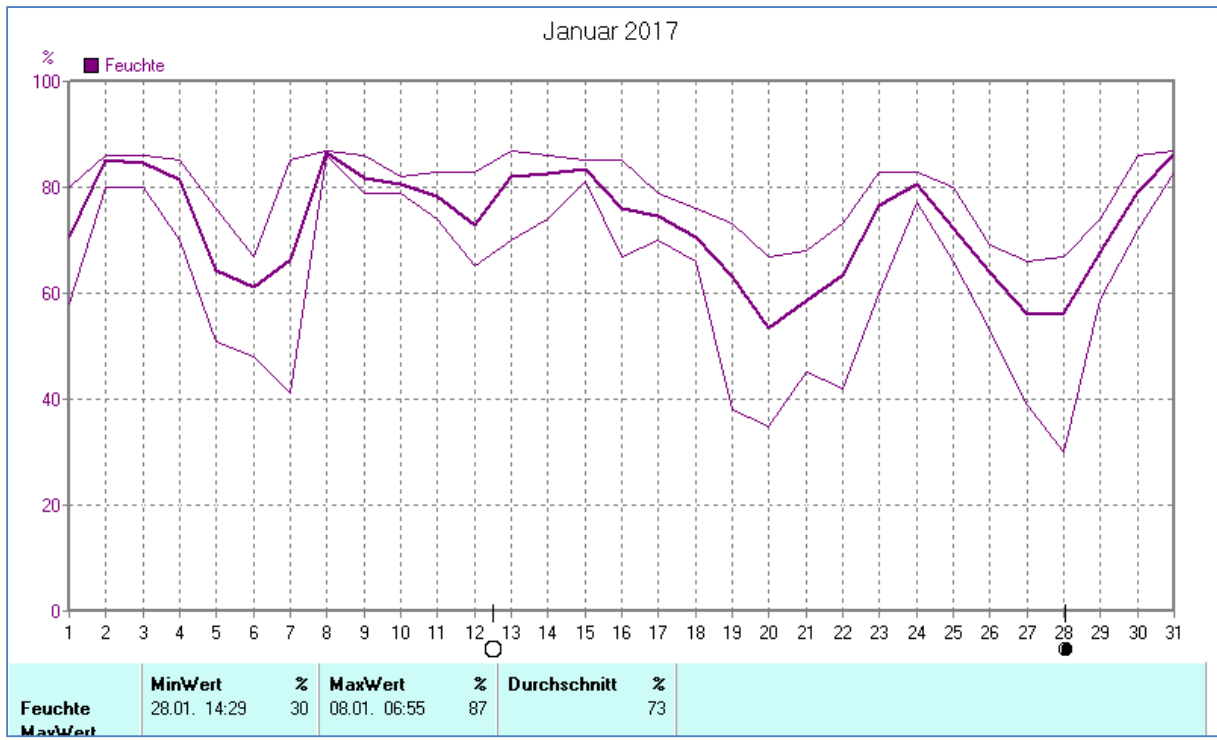
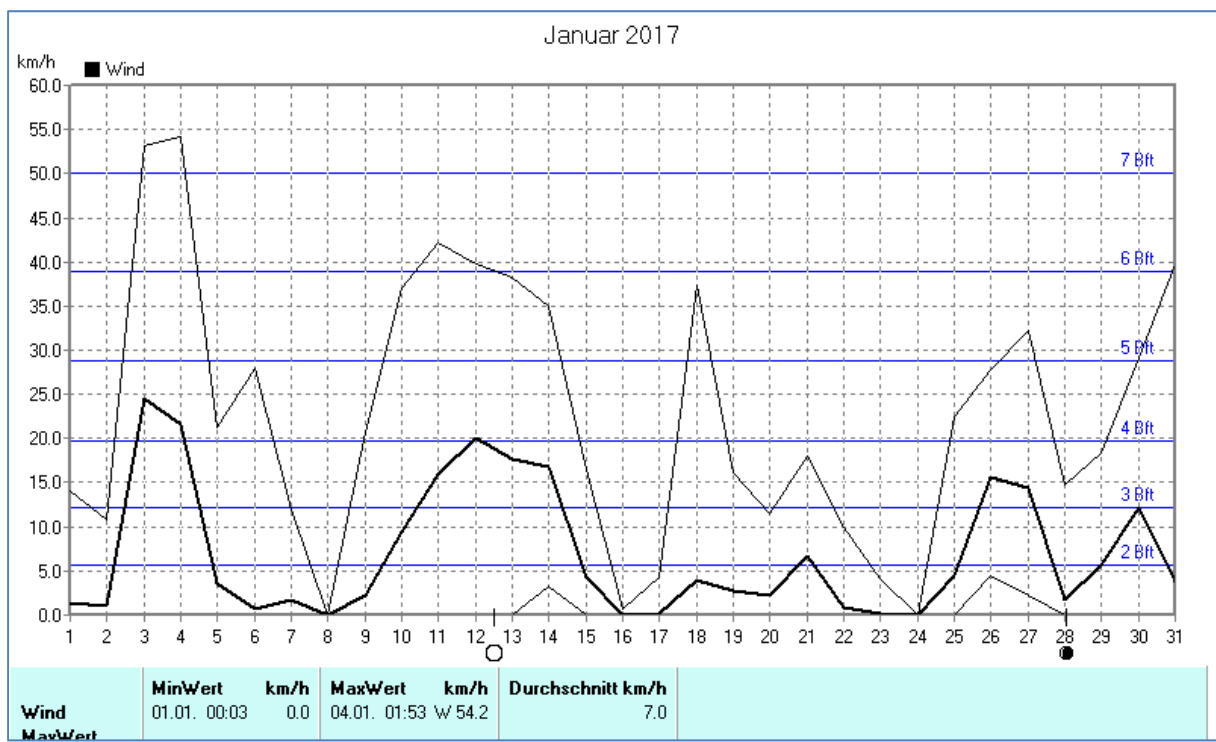
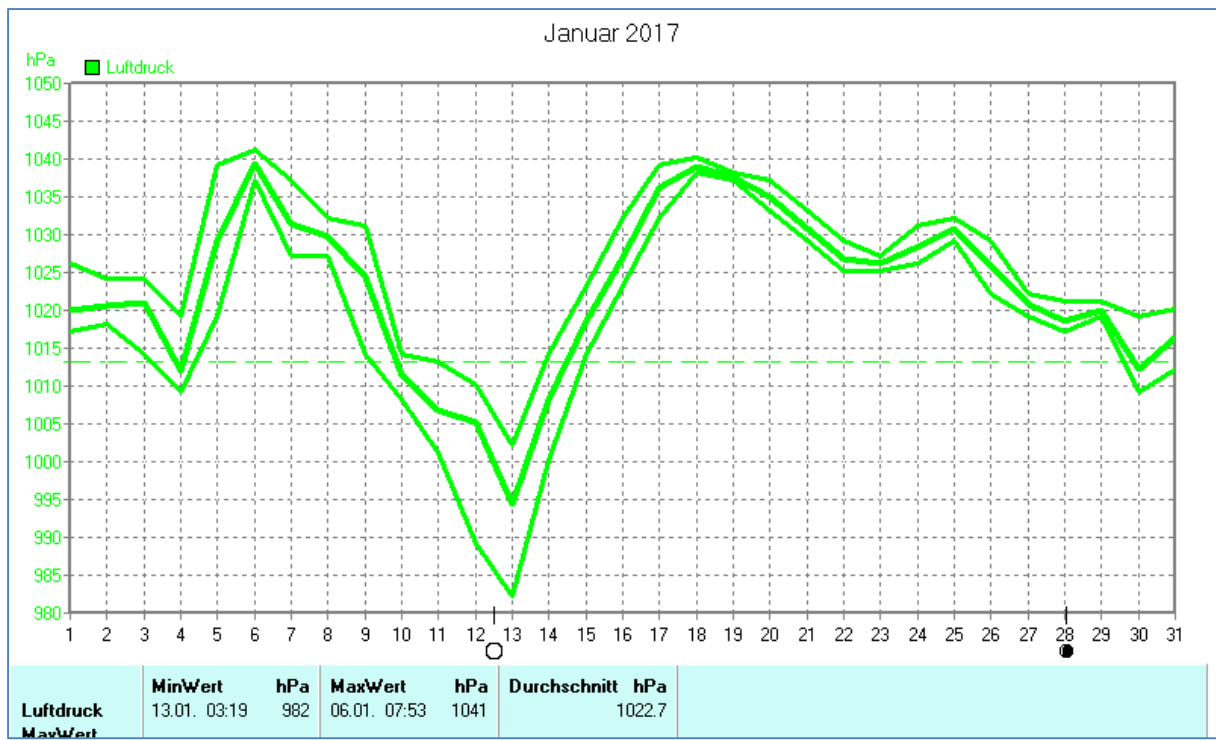


## Wettertabelle und Grafiken Januar 2017 Station Dahl

<u>Wetterdaten Januar 2017 Station Dahl</u>							
Meßgröße	Minimum	Zeit	Datum	Maximum	Zeit	Datum	Durchschnitt
Temperatur	-10,4 °C	04:38	23.01.2017	9,4 °C	14:39	28.01.2017	-1,0 °C
Bodentemp.	-11,8 °C	04:28	23.01.2017	8,9 °C	15:39	28.01.2017	-1,3 °C
Luftfeuchte	30 %	14:29	28.01.2017	87 %	06:55	08.01.2017	73 %
Luftdruck	982 hPa	03:19	13.01.2017	1041 hPa	07:53	06.01.2017	1023 hPa
Wind km/h				54,2 km/h	01:53	04.01.2017	7,0 km/h
Wind °				W	01:53	04.01.2017	W
Regen l/m <sup>2</sup>				9,4 l/m <sup>2</sup>	16:08	11.01.2017	#56,520 l/m <sup>2</sup>
Sonne h				5:00 h	14:09	27.01.2017	#44:31 h

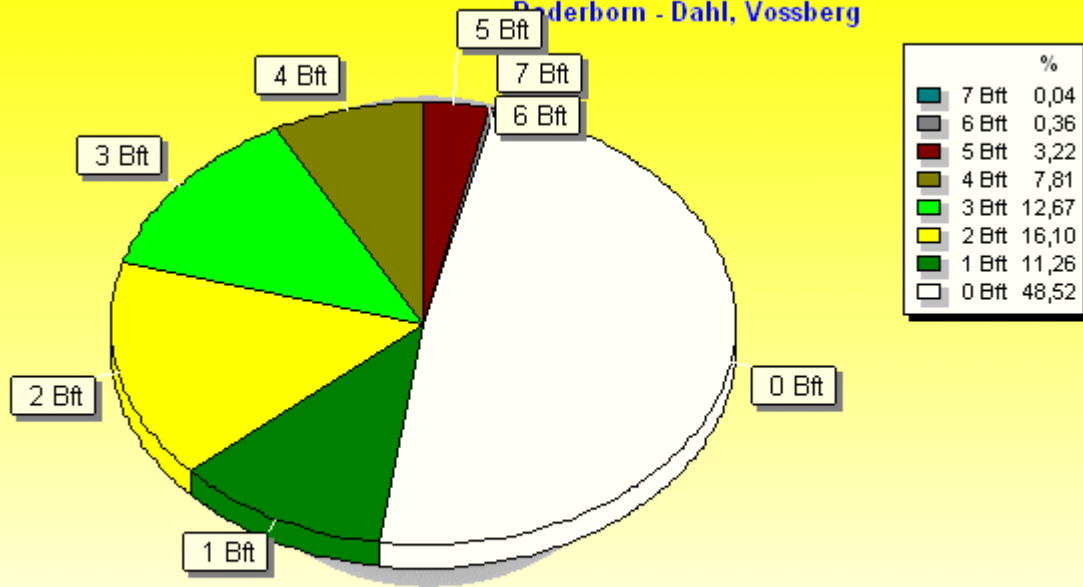






### Verteilung Windstärke Januar 2017

Paderborn - Dahl, Vossberg

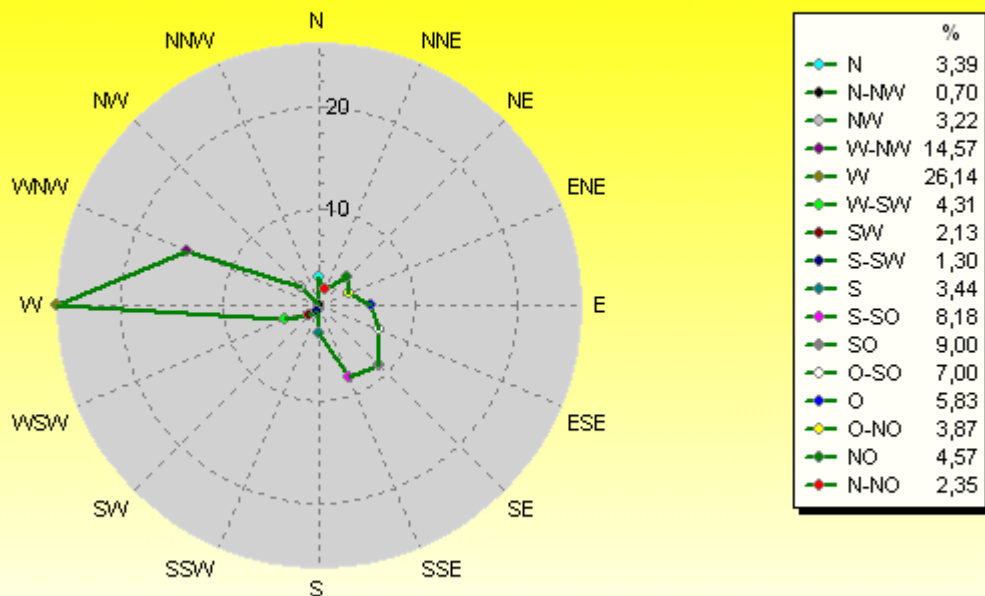


4466 Werte - Ø 7,0km/h - Max. 54,2km/h

© WzWin32

### Verteilung Windrichtung Januar 2017

Paderborn - Dahl, Vossberg



2299 / 2167 Werte -> 48.5% Windstille - Ø 7,0km/h - Max. 54,2km/h

© WzWin32

