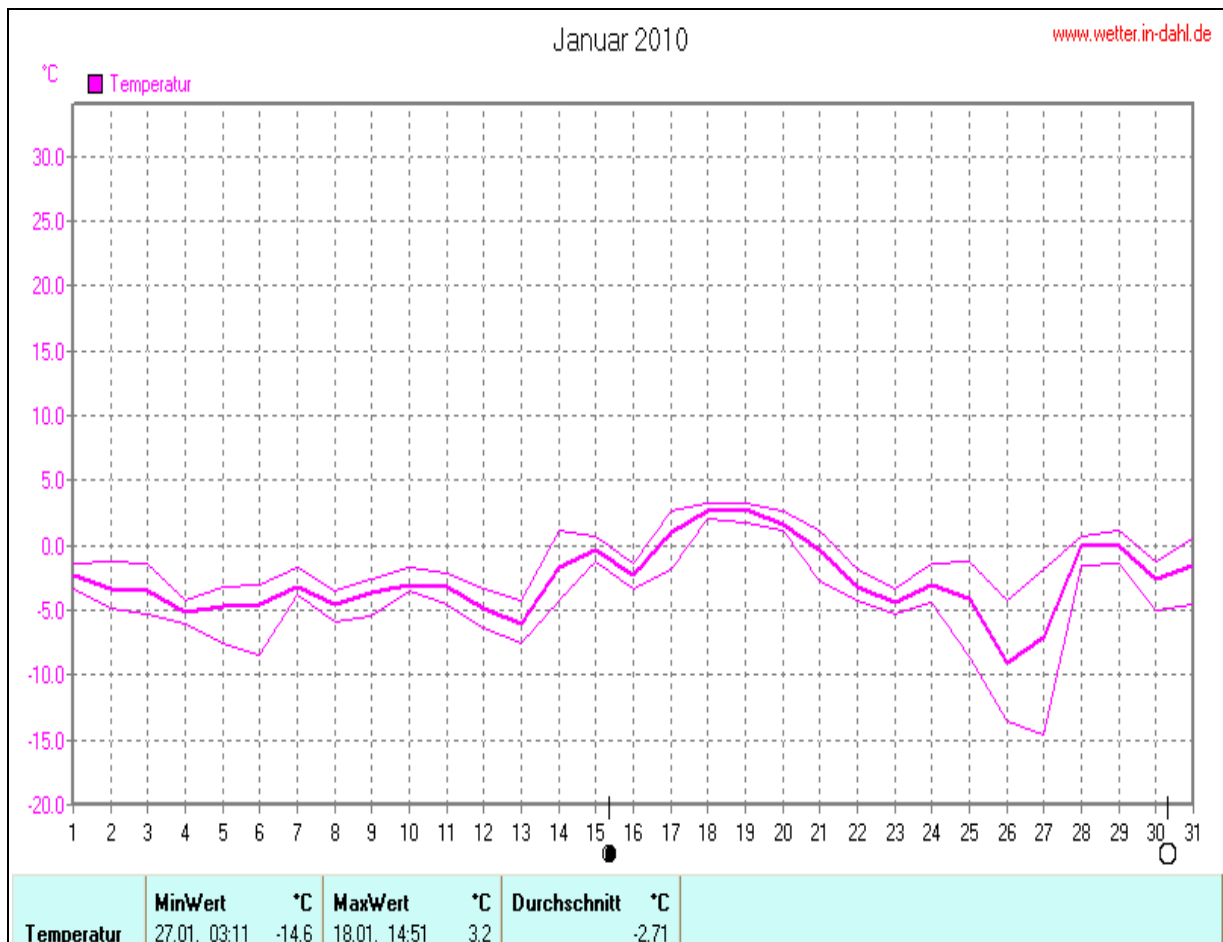
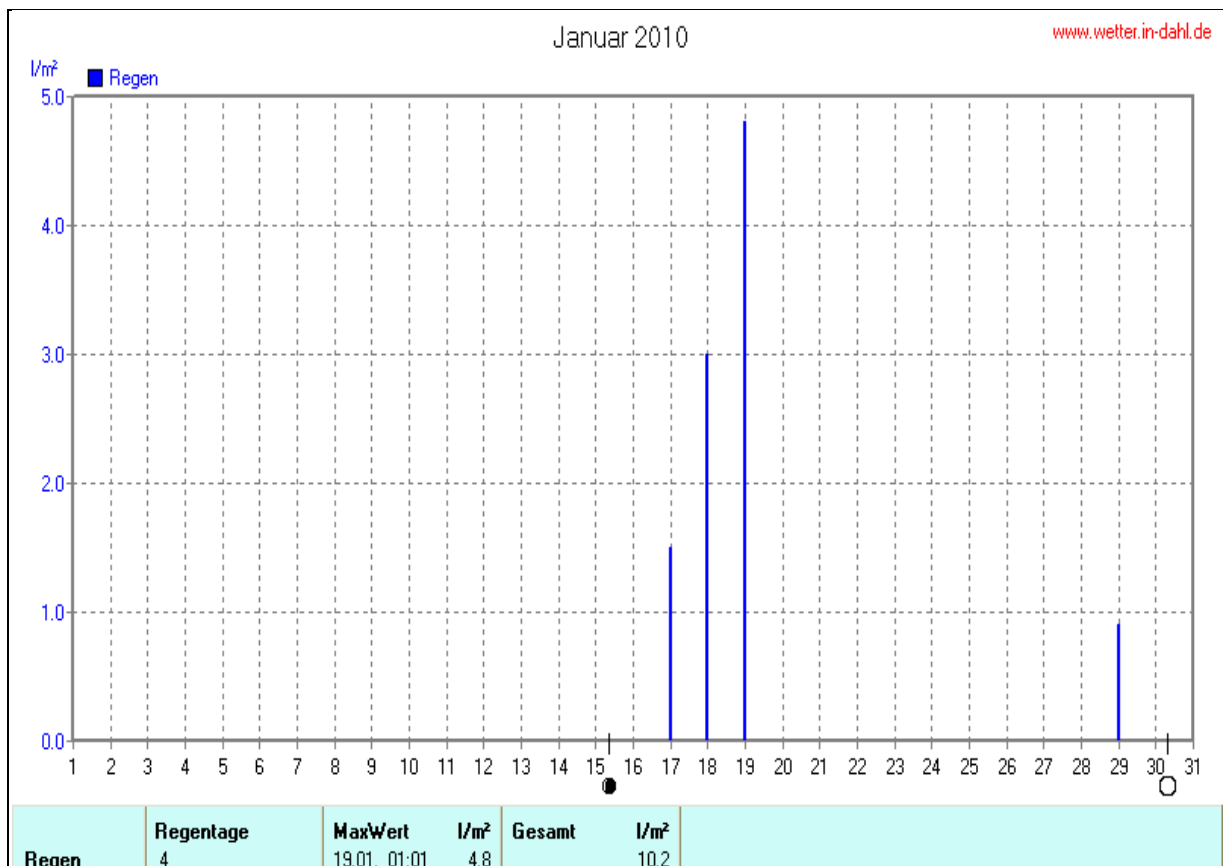
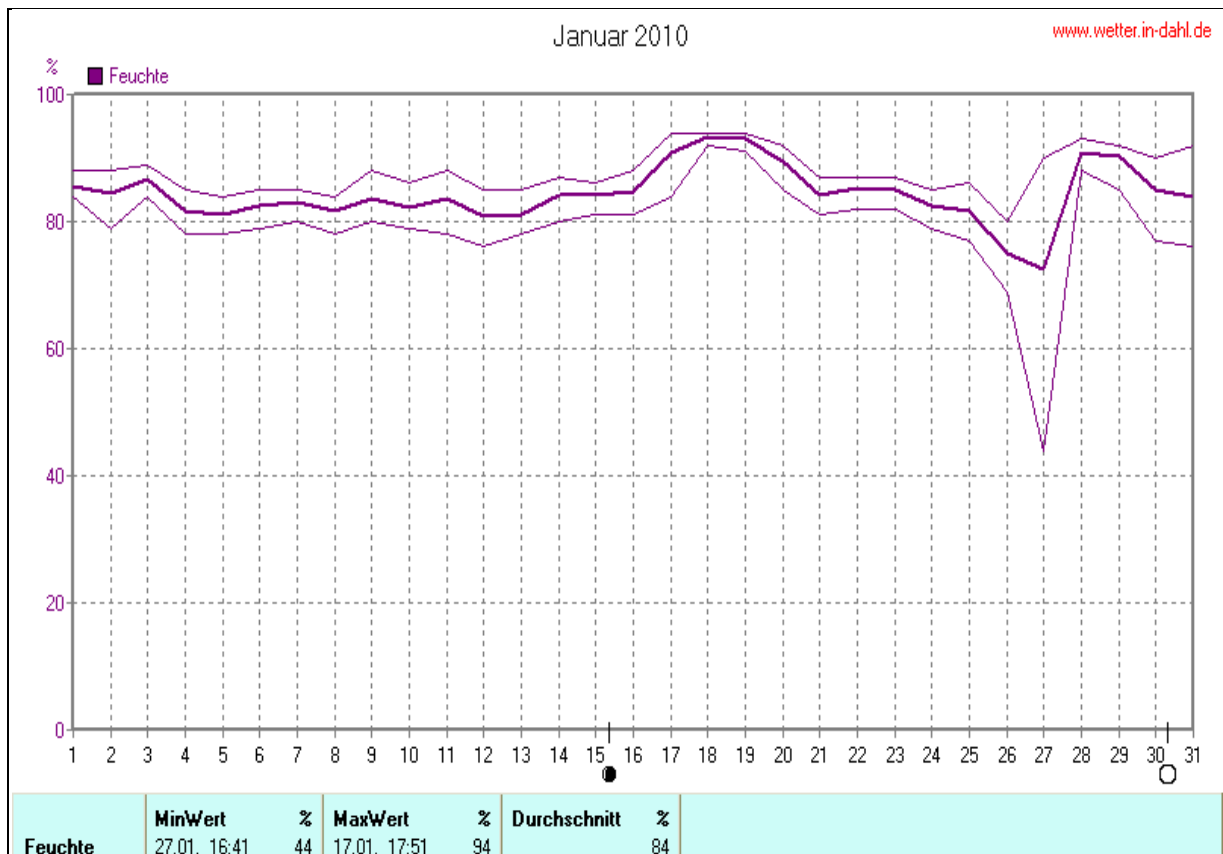


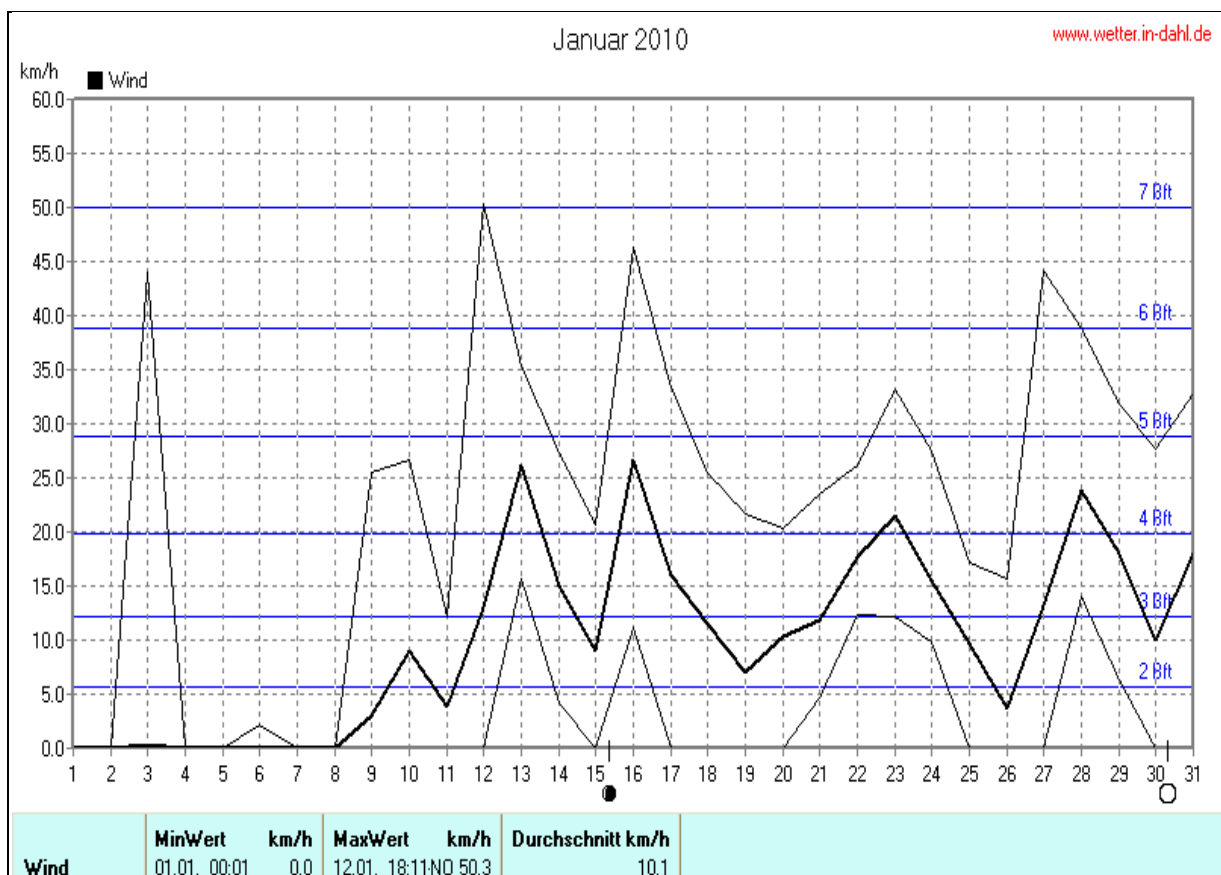
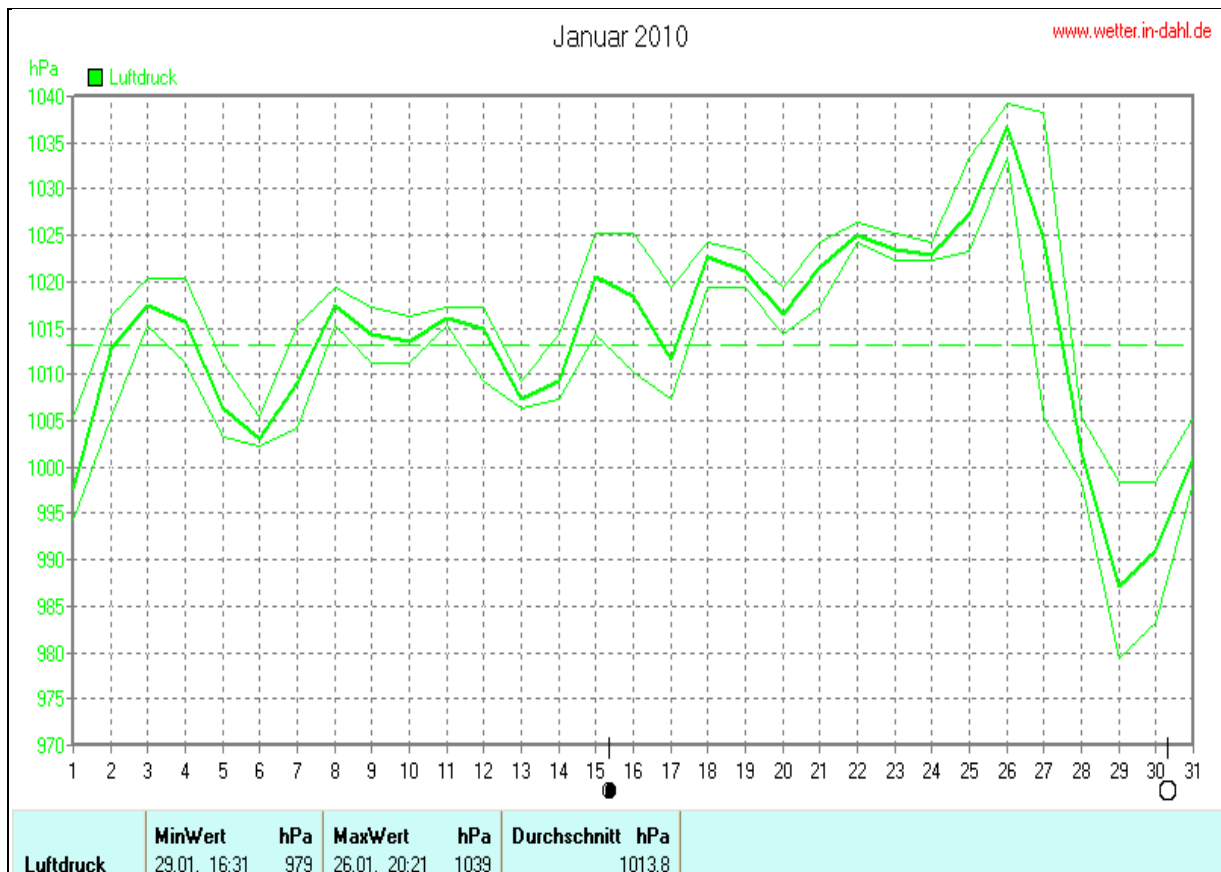
Wettertabelle und Grafiken Januar 2010 Station Dahl

Wetterdaten Januar 2010 Station Dahl

Meßgröße	Minimum	Zeit	Datum	Maximum	Zeit	Datum	Durchschnitt
Temperatur (2m)	-14,6 °C	03:11	27.01.2010	3,2 °C	14:51	18.01.2010	-2,7 °C
Bodentemperatur (5cm ü.B.)	-16,3 °C	23:51	26.01.2010	3,8 °C	12:51	20.01.2010	-2,6 °C
Luftfeuchte	44%	16:41	27.01.2010	94%	17:51	17.01.2010	84%
Luftdruck	979 hPa	16:31	29.01.2010	1039 hPa	20:21	26.01.2010	1014 hPa
Windgeschwindigkeit				50,3 km/h	18:11	12.01.2010	10,1 km/h
Windrichtung				O-NO	18:11	12.01.2010	S-SO
Regenmenge				4,8 l/m ²	01:01	19.01.2010	#10,200 l/m ²
Sonnenschein-Zeit				4,33 h	14:01	26.01.2010	#18:16 h

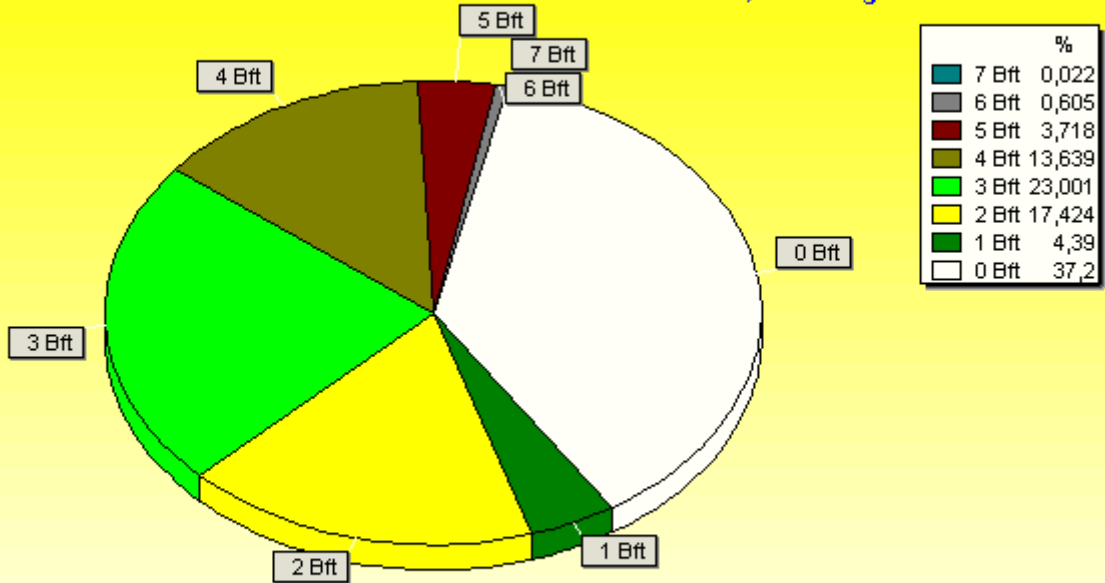






Verteilung Windstärke Januar 2010

Paderborn - Dahl, Vossberg

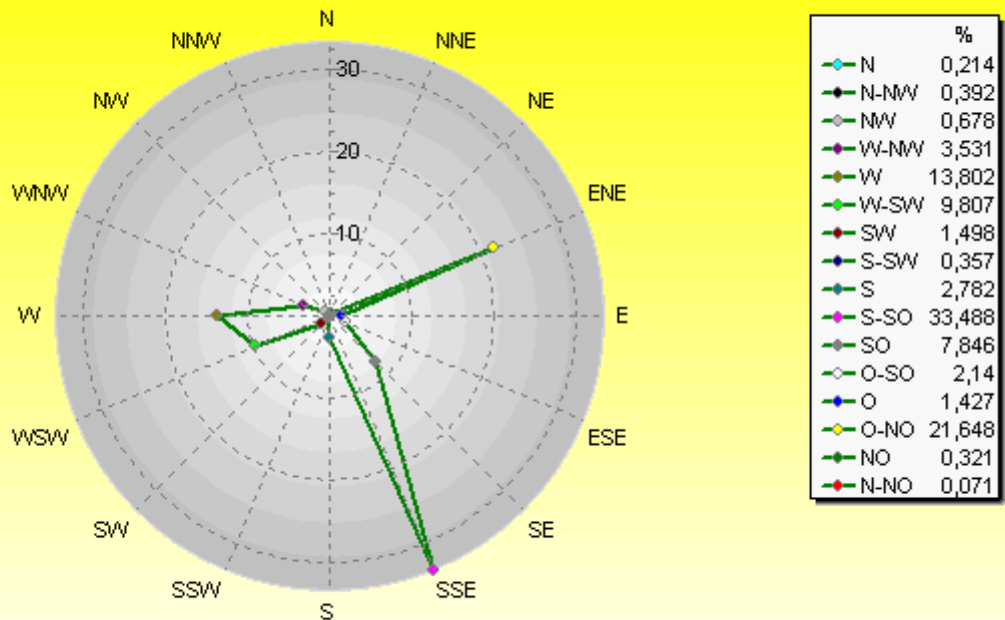


4465 Werte - Ø 10,1km/h - Max. 50,3km/h

© WzWin32

Verteilung Windrichtung Januar 2010

Paderborn - Dahl, Vossberg



2804 / 1661 Werte -> 37.2% Windstille - Ø 10,1km/h - Max. 50,3km/h

© WzWin32

