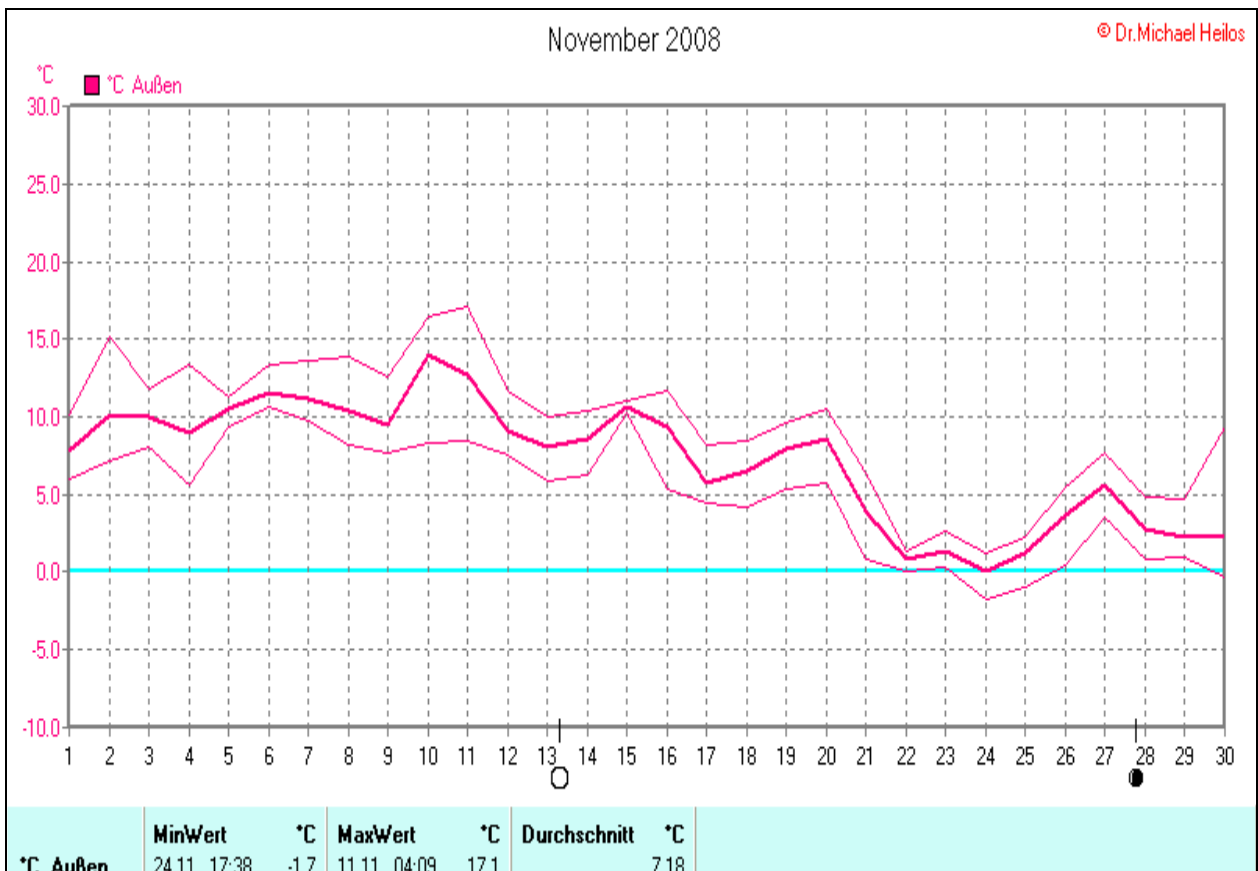
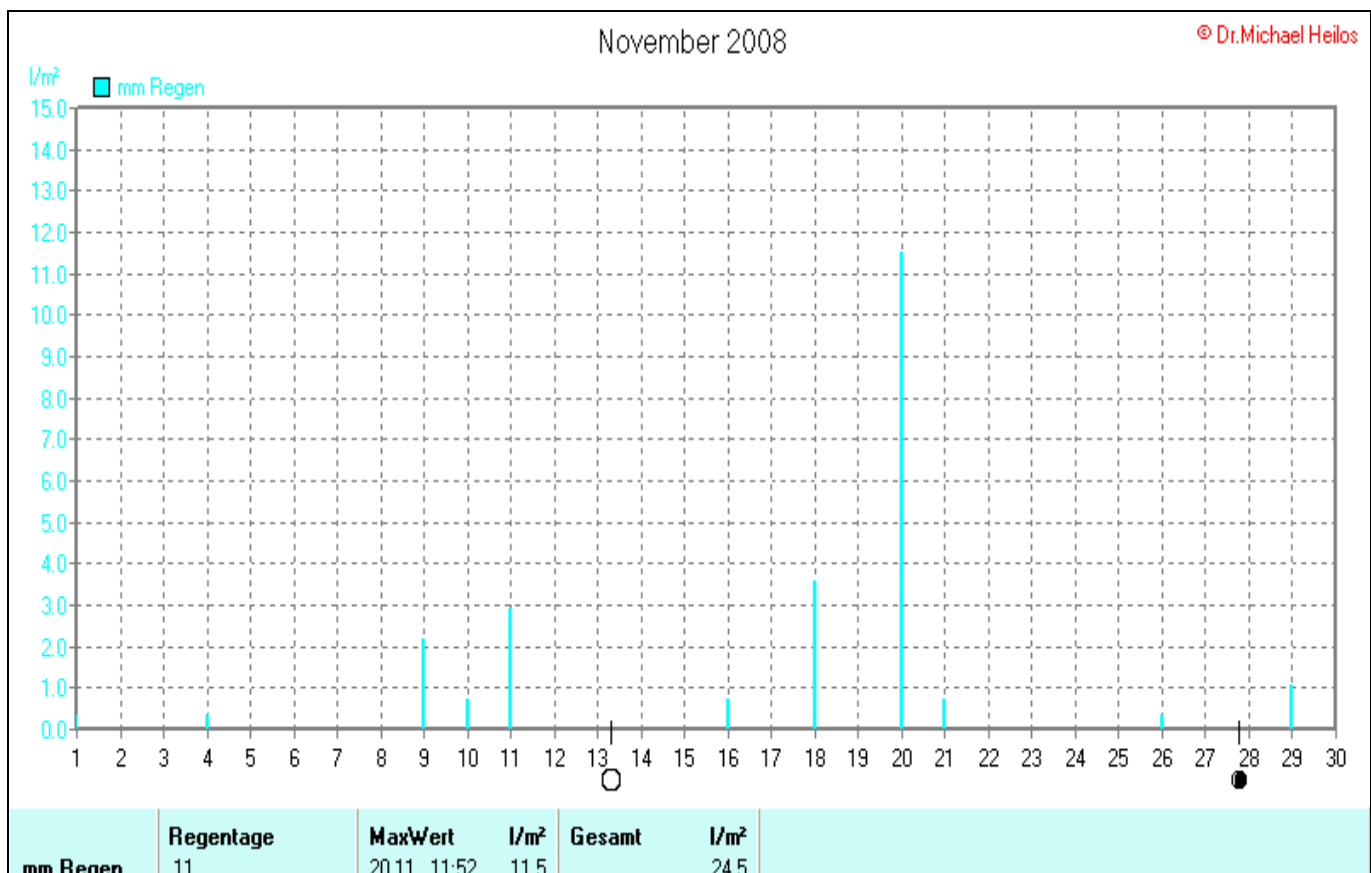
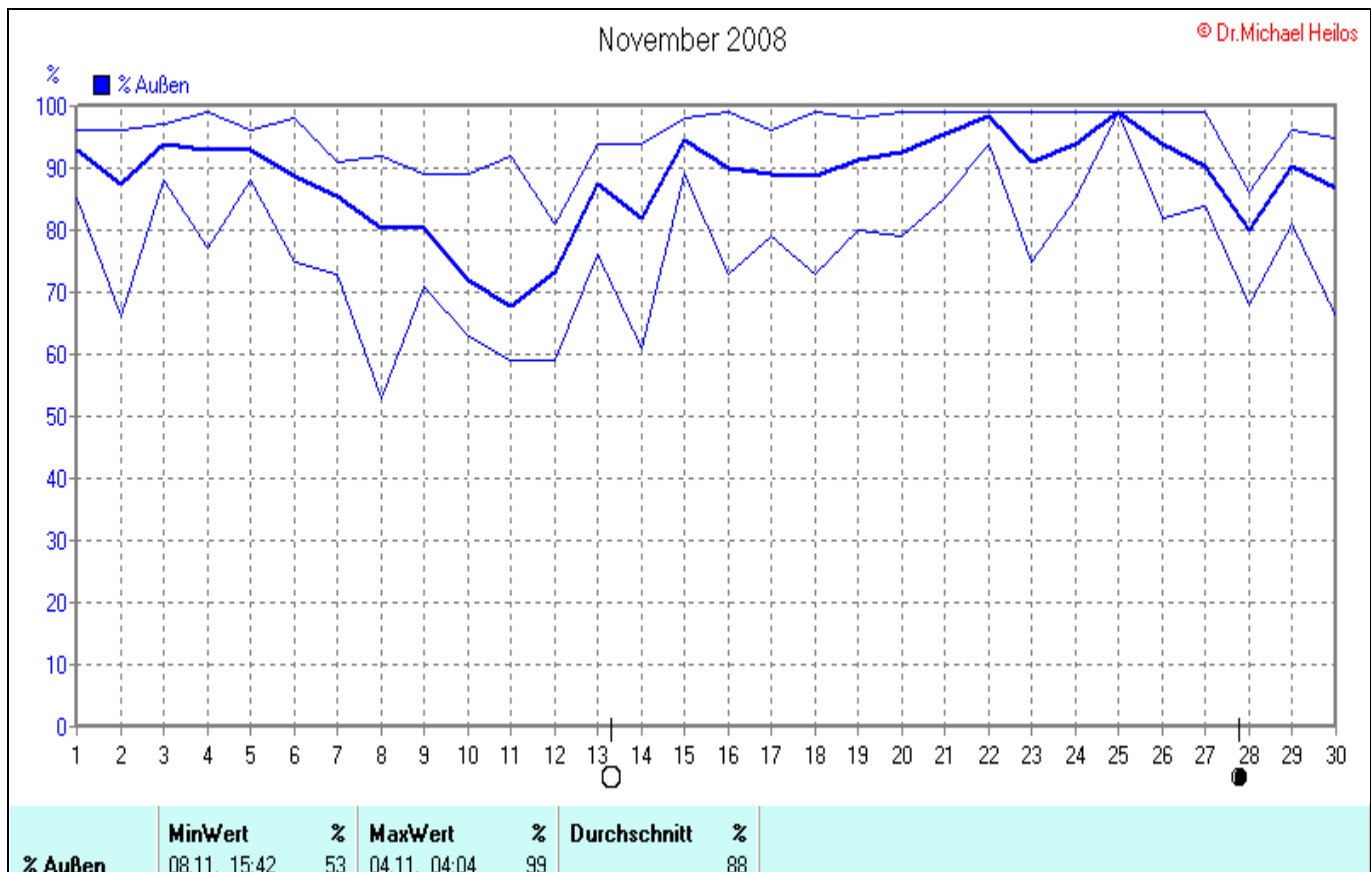
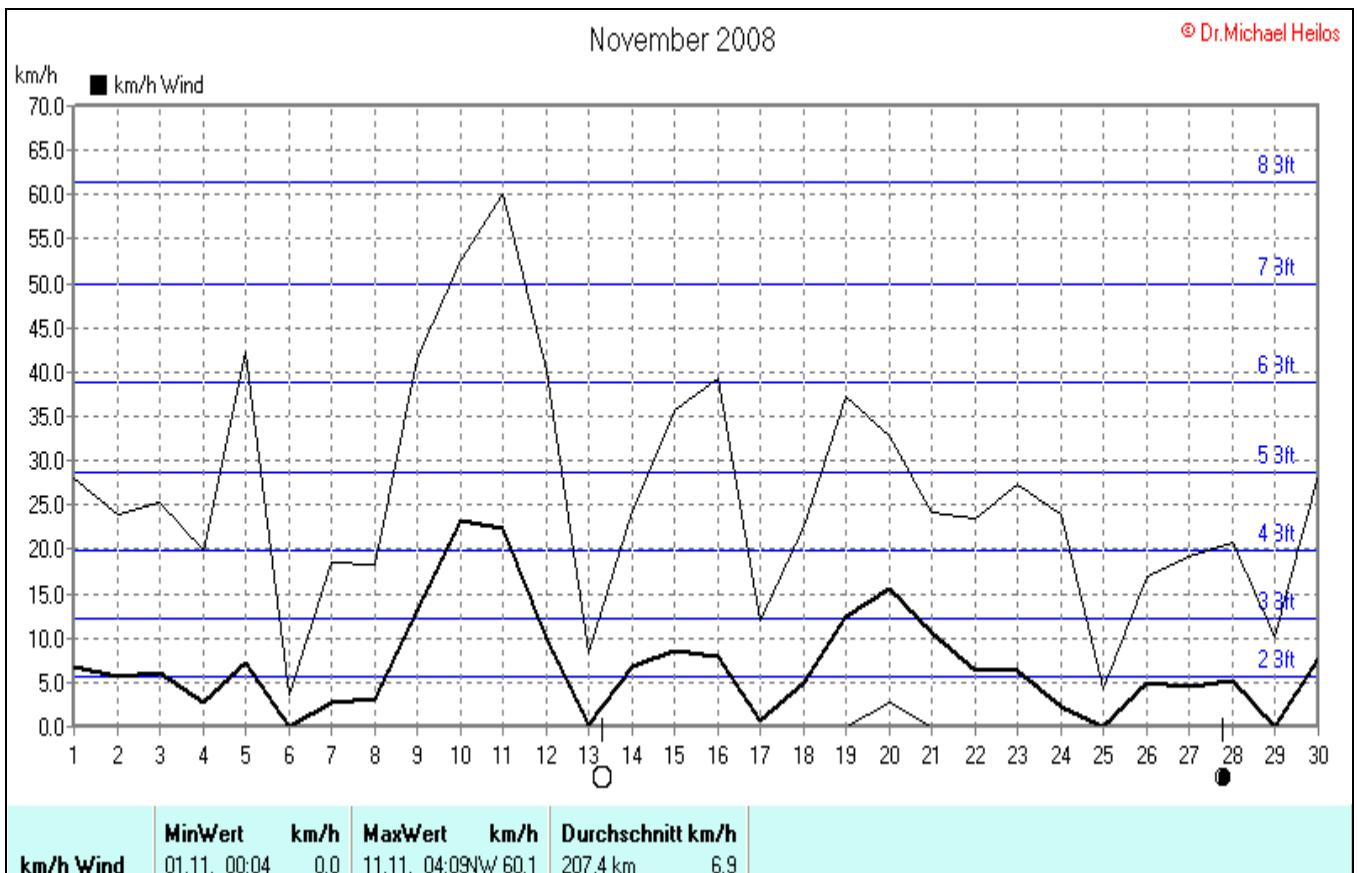
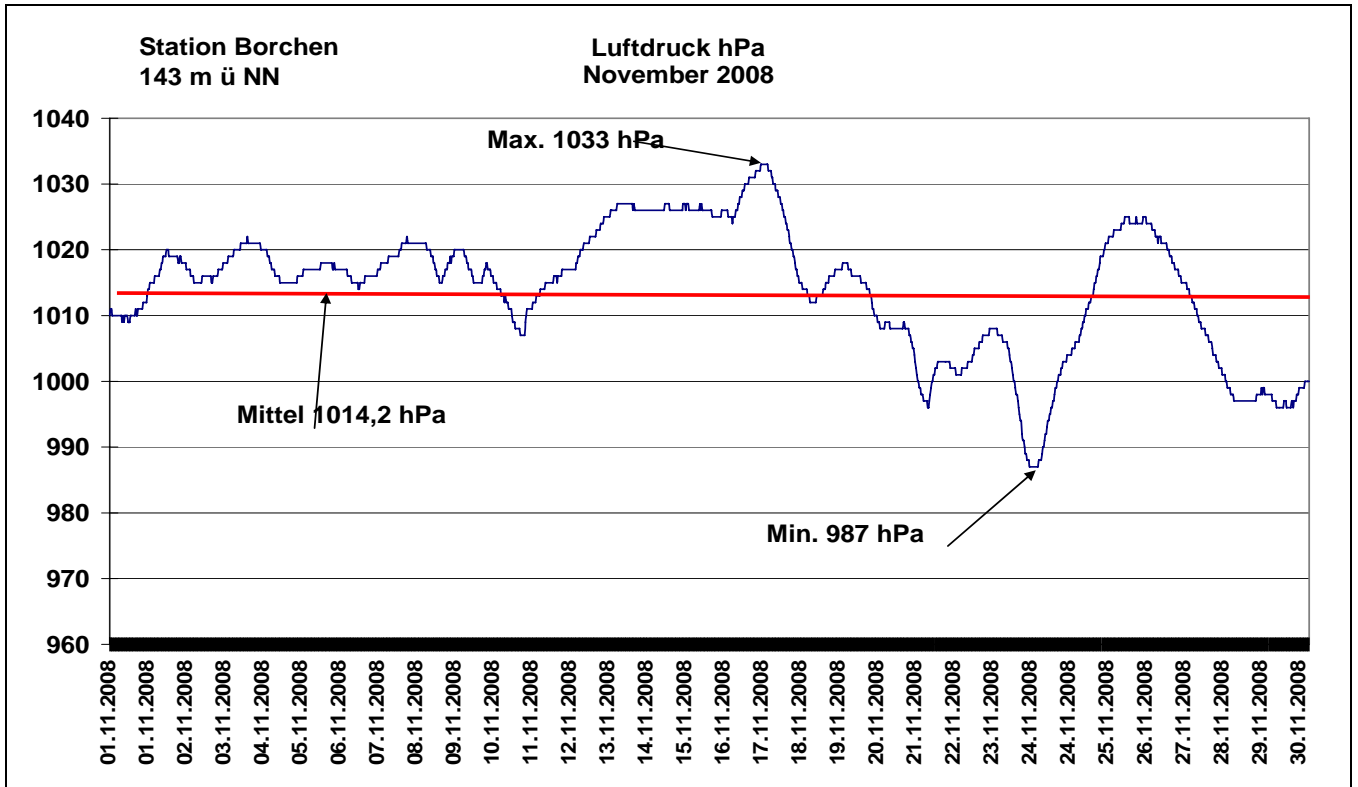


Wettergrafiken und Tabelle November 2008 Station Borchten

Klimadaten		Wetterstation Borchten	
Standortkoordinaten: geogr. 08°43'35"O - 51°39'58"N			
143 m ü. NN			
Monatswerte: Nov 08			
Temperatur: (Vj. 6,2°C)		7,2 °C	Tage mit Schneedecke: Eistage(Max<0,0°C): Frosttage(MIN<0,0°C): 3 Sommertage(Max>=25°C): Heiße Tage(Max>=30°C):
Lj.Mittel:(Lipp.1961-90):		5,2 °C	
Abweichung:		2,0 K	
Absoluts Max.: 17,1 °C			
Absolutes Min.: -1,7 °C			
Niederschlag: (Vj. 96,1 mm) 24,5 mm		Luftdruck(Meereshöhe):hPa Absolutes Max.: 1033 Absolutes Min.: 987 Mittel: 1014,2	
Max.Tag: 11,5 mm			
Lj.Mittel(Lipp. 1961-90): 79,4 mm			
Mittel relative Feuchte: 88 %			
Max. Windböe: 60,1 km/h		Sonne h: 49,1 h Lj.Lipp.(1961-90): 51,9 h	
Mittlere Wind: 6,1 km/h			

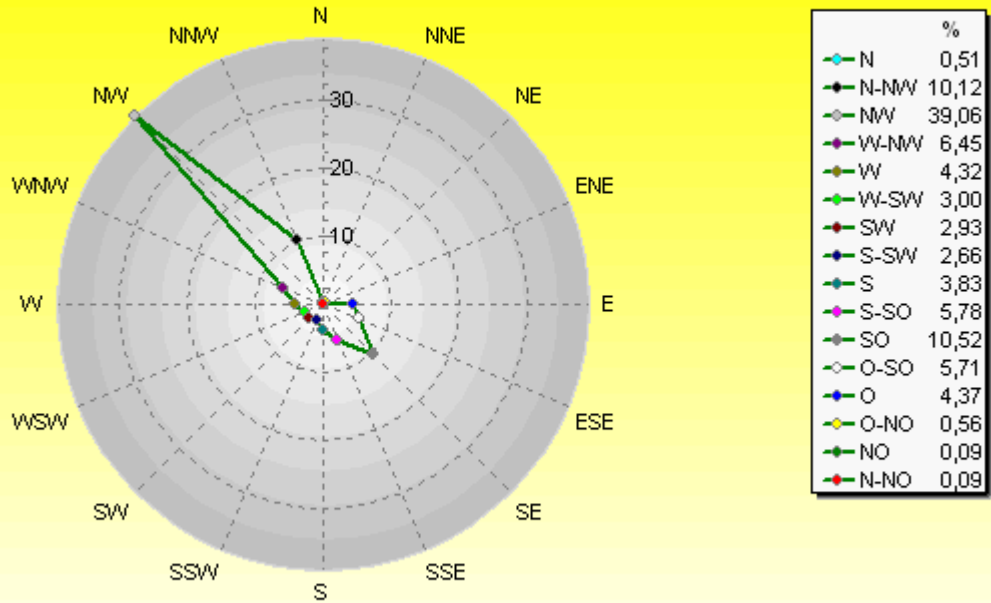






Verteilung Windrichtung November 2008

Borchen, Kreis Paderborn

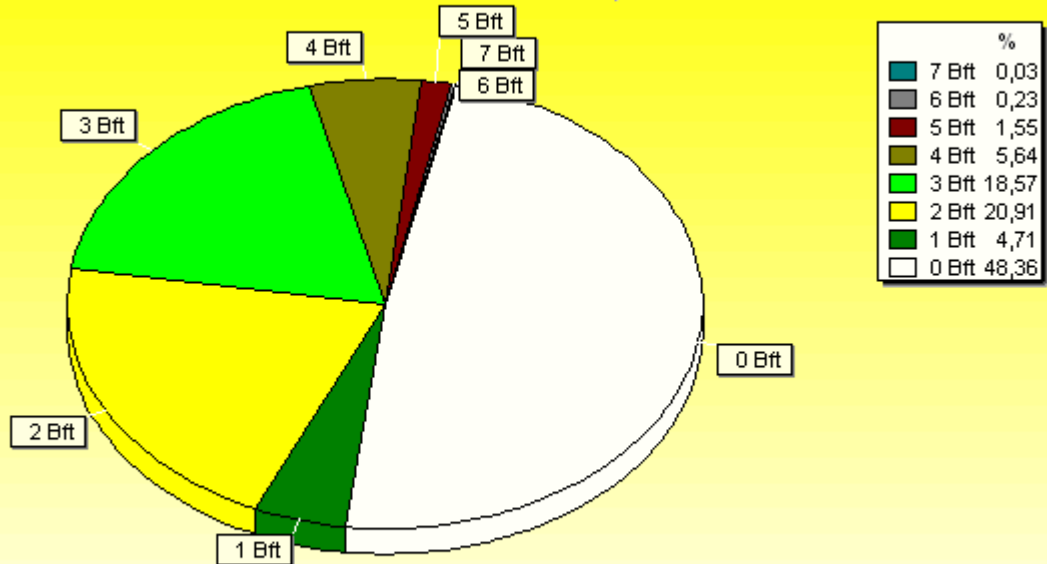


4467 / 4183 Werte -> 48.4% Windstille - Ø 6,9km/h - Max. 60,1km/h - 4978,0 km

© WzWin32 - © Dr.Michael Heilos - Borchen

Verteilung Windstärke November 2008

Borchen, Kreis Paderborn



8650 Werte - Ø 6,9km/h - Max. 60,1km/h - 4978,0 km

© WzWin32 - © Dr.Michael Heilos - Borchen

