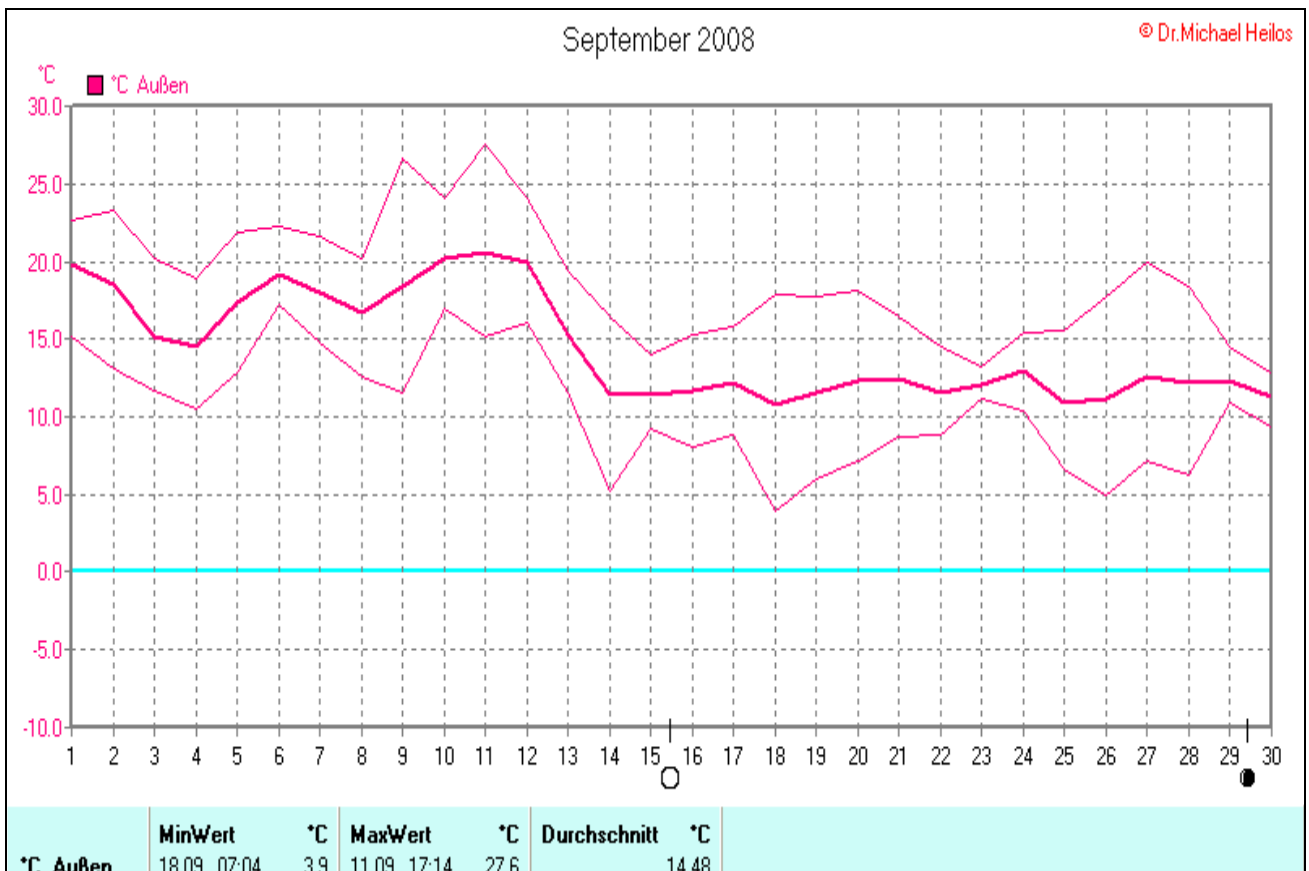
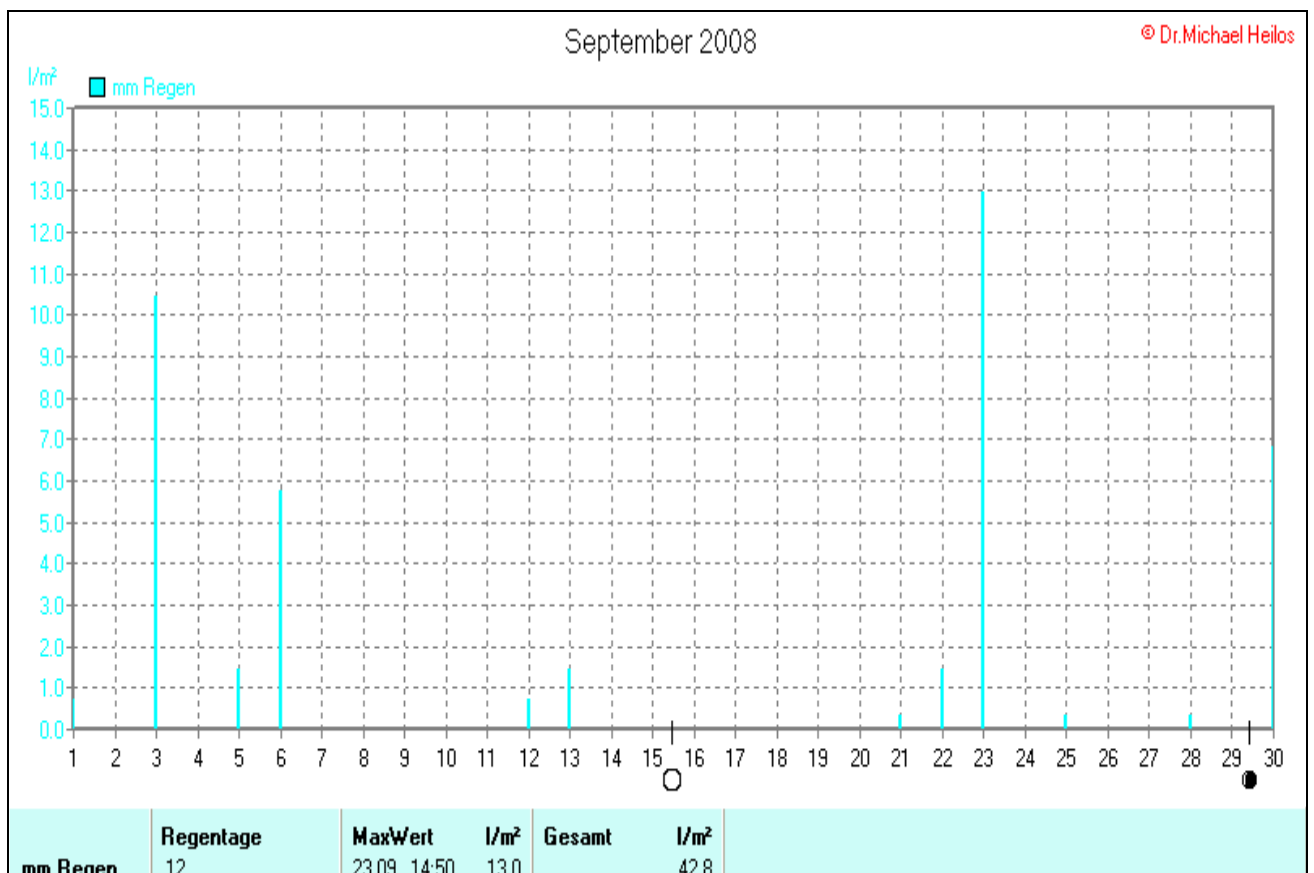
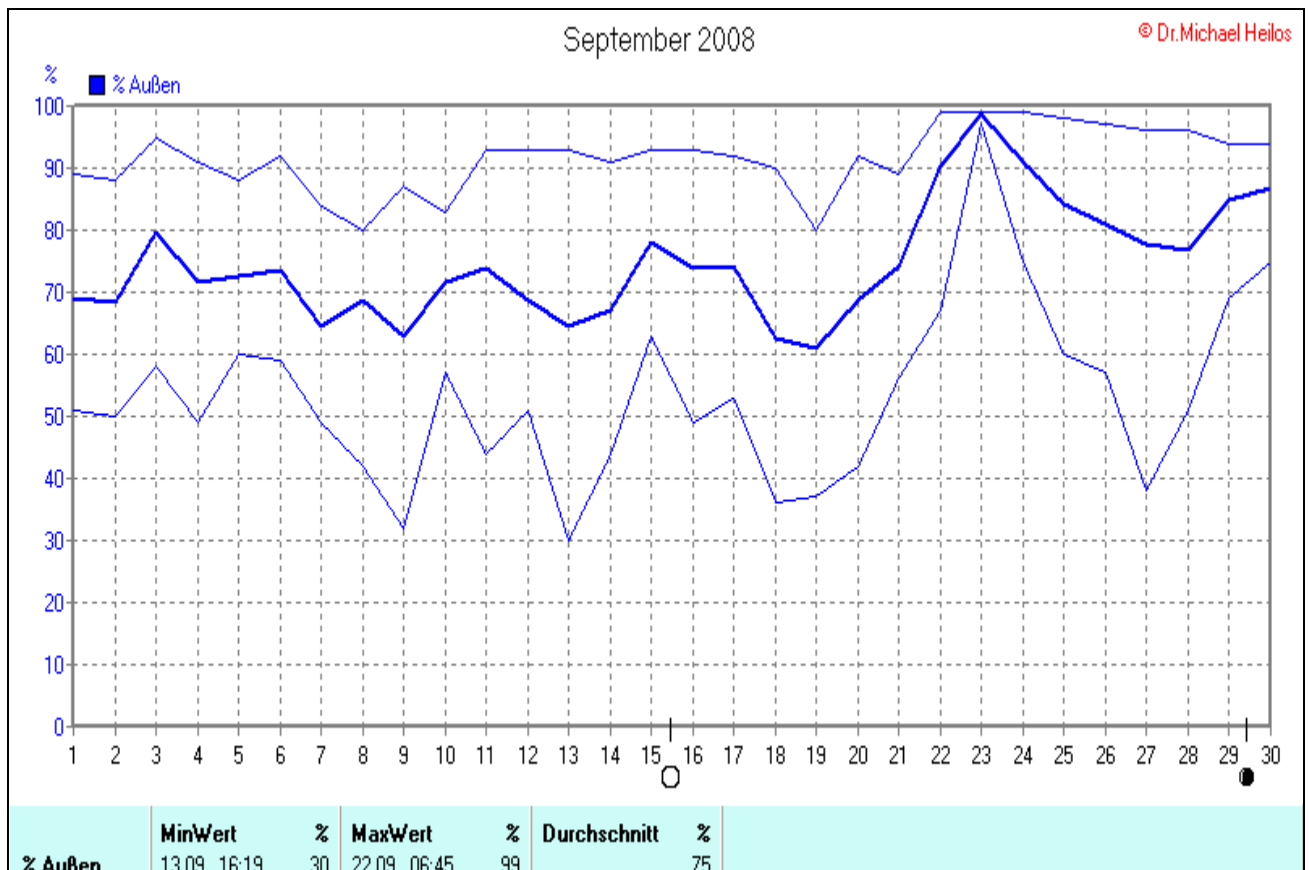
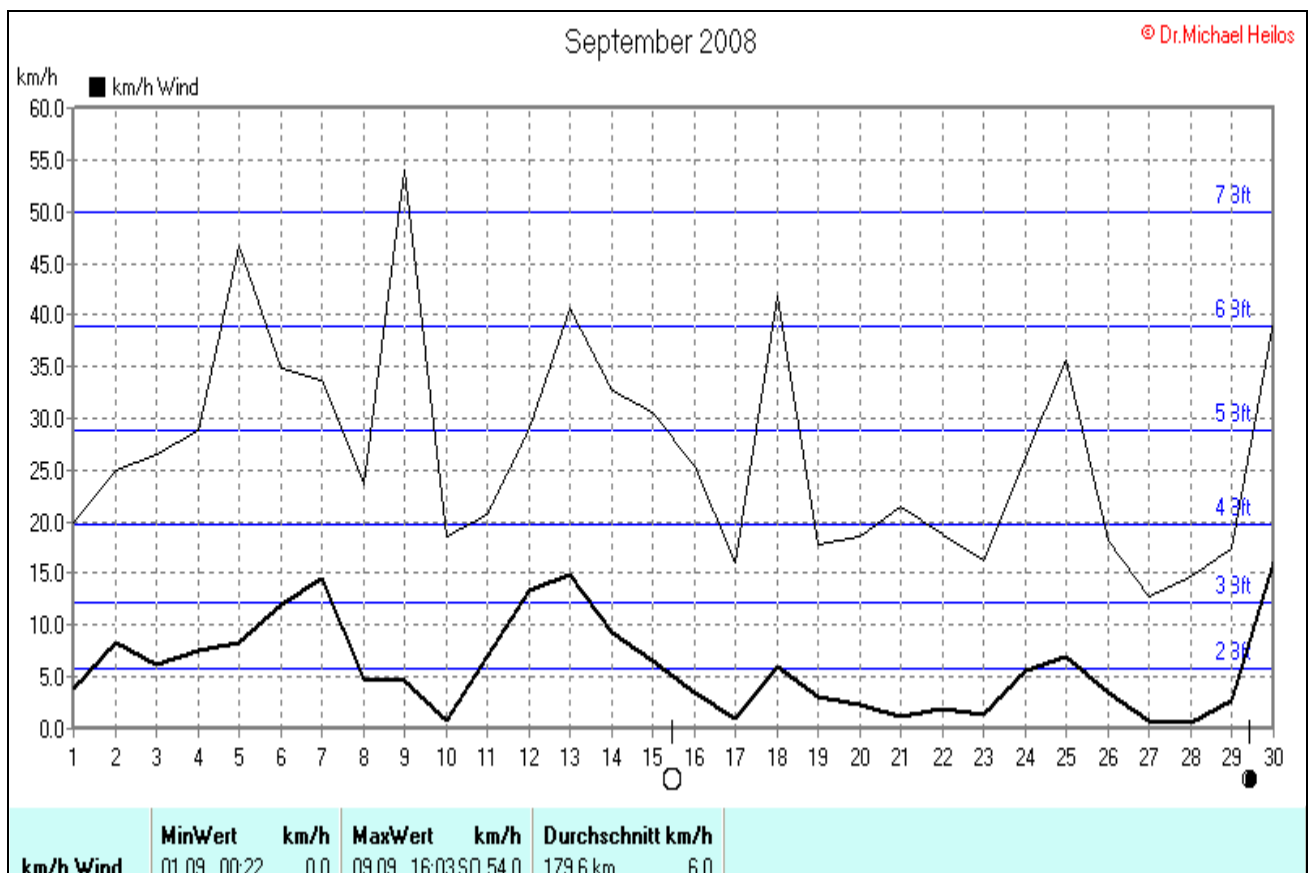
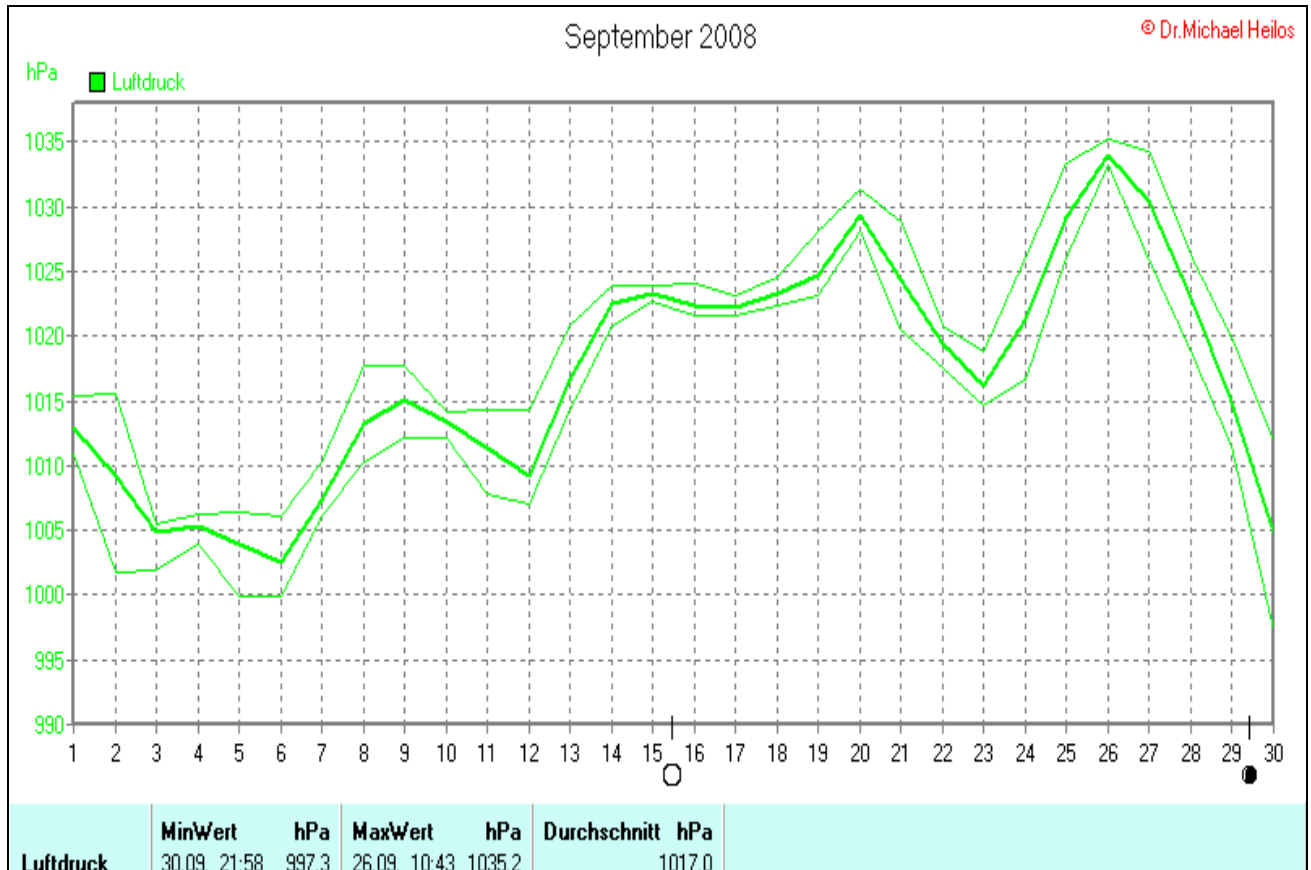


## Wettergrafiken und Tabelle September 2008 Station Borchsen

Klimadaten		Wetterstation Borchsen	
<b>Standortkoordinaten:</b> geogr. 08°43'35"O - 51°39'58"N			
143 m ü. NN			
<b>Monatswerte:</b> Sep 08			
<b>Temperatur: (Vj.14,5°C) 14,5 °C</b>		Tage mit Schneedecke: Eistage(Max<0,0°C): Frosttage(MIN<0,0°C): Sommertage(Max>=25°C): 2 Heiße Tage(Max>=30°C):	
Lj.Mittel:(Lipp.1961-90): 13,8 °C			
Abweichung: 0,7 K			
Absoluts Max.: 27,6 °C			
Absolutes Min.: 3,9 °C			
<b>Niederschlag: (Vj.143,6 mm) 42,8 mm</b>		<b>Luftdruck(Meereshöhe):hPa</b> Absolutes Max.: 1035 Absolutes Min.: 997  Mittel: 1017	
Max.Tag: 13,0 mm			
Lj.Mittel(Lipp. 1961-90): 70,4 mm			
<b>Mittel relative Feuchte: 75 %</b>			
<b>Max. Windböe: 54,0 km/h</b>		<b>Sonne h: 145,6 h</b> Lj.Lipp.(1961-90): 130,4 h	
<b>Mittlere Wind: 6,0 km/h</b>			

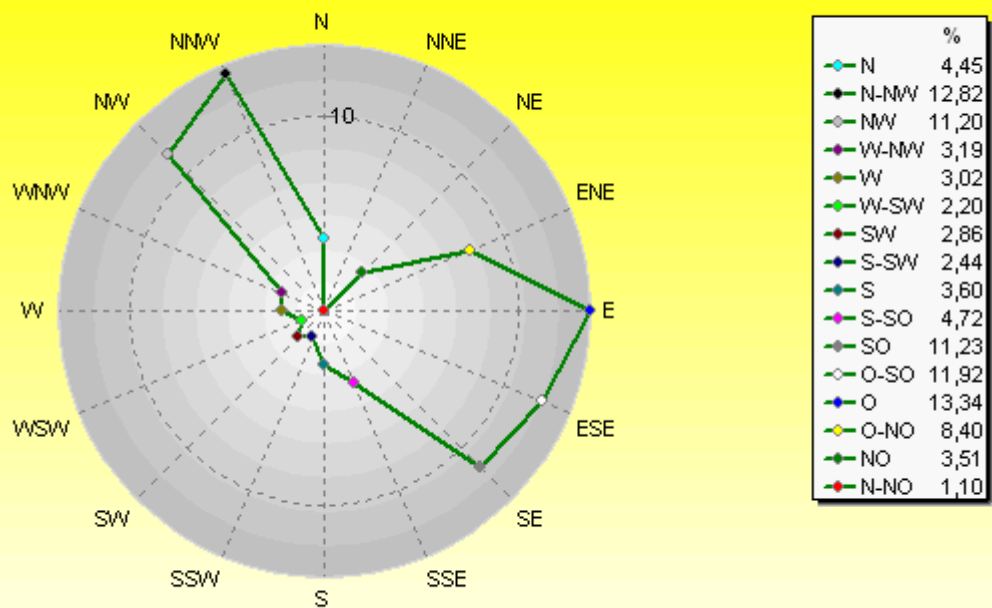






### Verteilung Windrichtung September 2008

#### Borchen, Kreis Paderborn

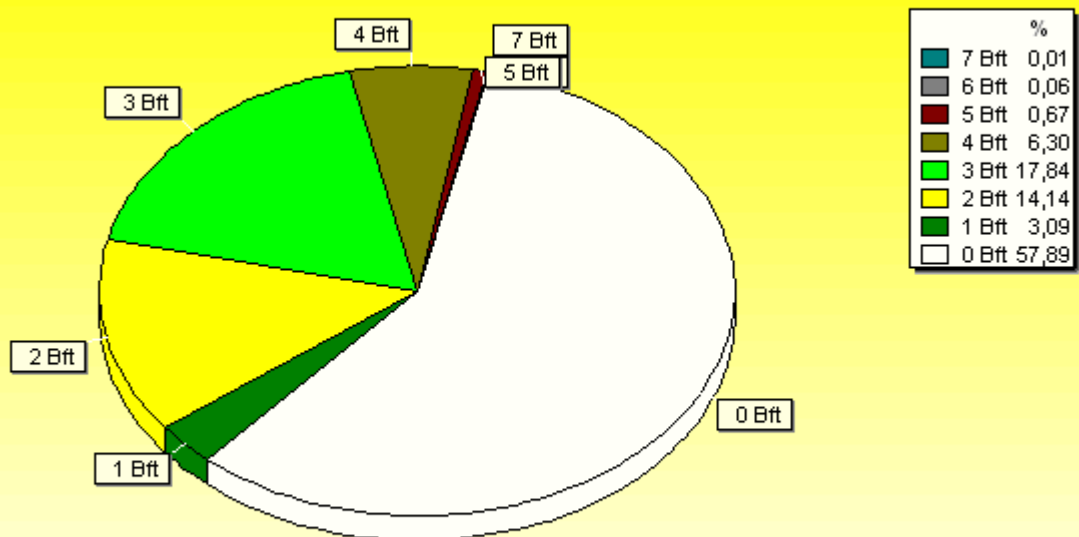


3642 / 5007 Werte -> 57.9% Windstille - Ø 6,0km/h - Max. 54,0km/h - 4309,7 km

© WzWin32 - © Dr.Michael Heilos - Borchen

### Verteilung Windstärke September 2008

#### Borchen, Kreis Paderborn

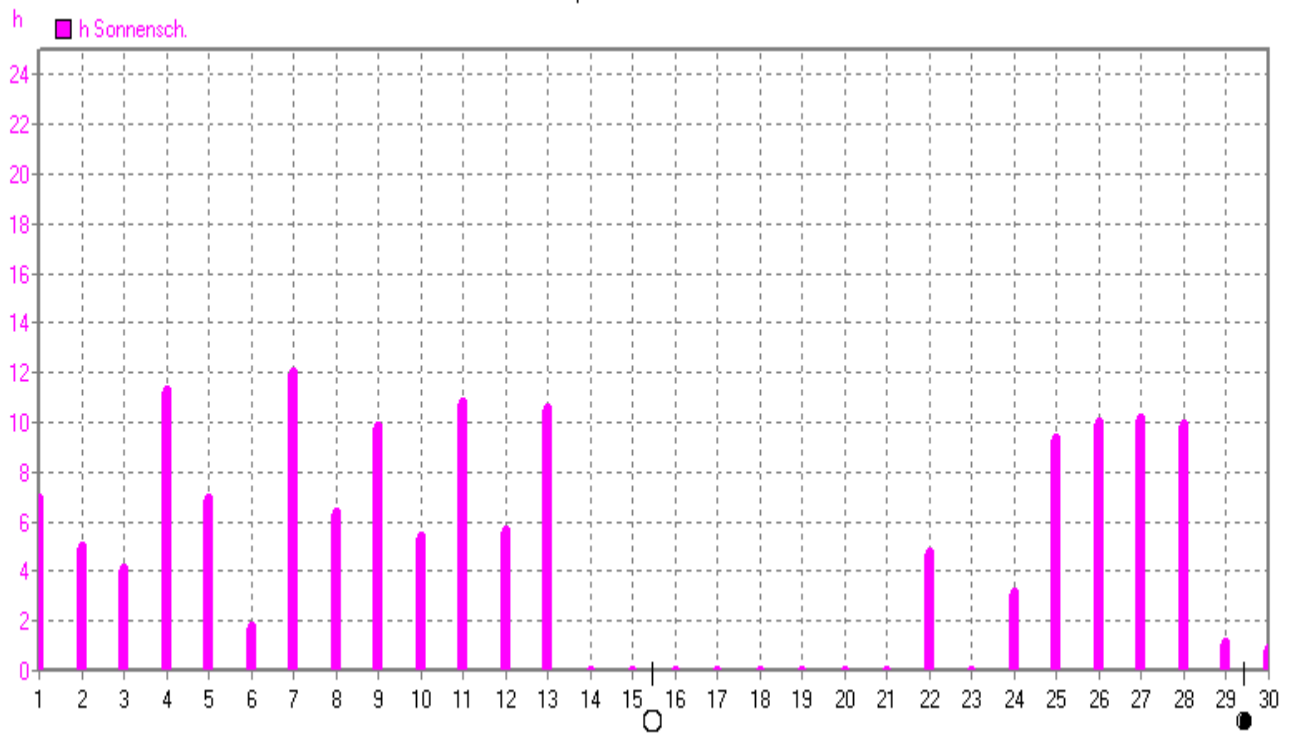


8649 Werte - Ø 6,0km/h - Max. 54,0km/h - 4309,7 km

© WzWin32 - © Dr.Michael Heilos - Borchen

# September 2008

© Dr. Michael Heilos



h Sonnensch.	MaxWert	h	Durchschnitt	h
	07.09. 19:23	12.02	145.57 h	5