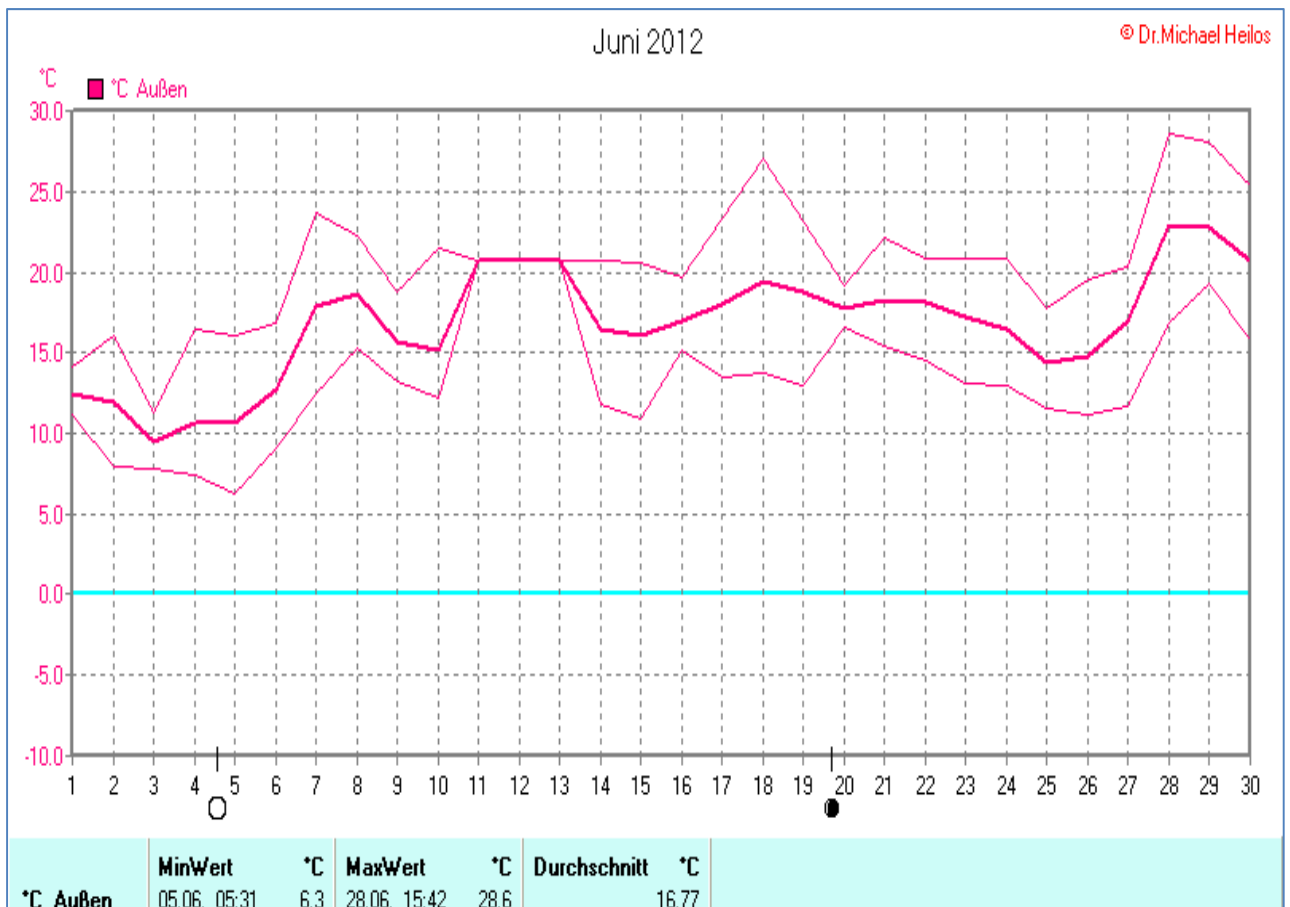


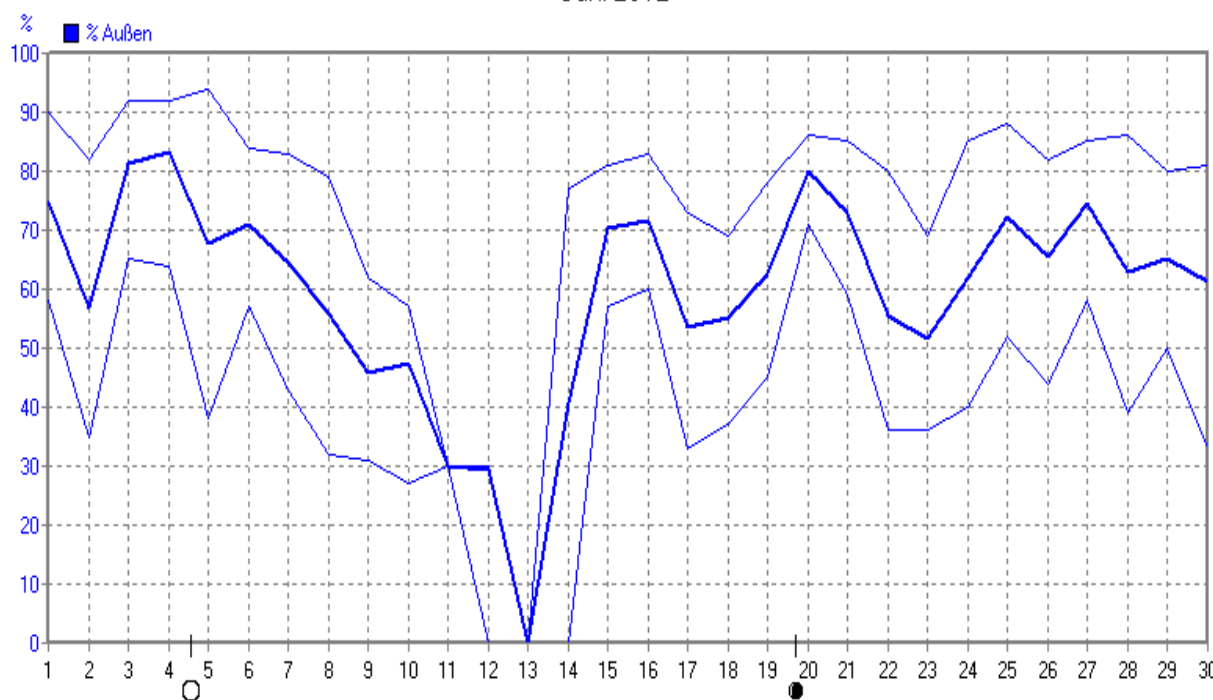
## Wettertabelle und Grafiken Juni 2012 Station Borchten

| <u>Wetterdaten Juni 2012 Station Borchten</u> |            |       |            |                       |       |            |                          |
|---|------------|-------|------------|-----------------------|-------|------------|--------------------------|
| © Dr. Michael Heilos                          |            |       |            |                       |       |            |                          |
| Meßgröße                                      | Minimum    | Zeit  | Datum      | Maximum               | Zeit  | Datum      | Durchschnitt             |
| Temperatur                                    | 6,3 °C     | 05:31 | 05.06.2012 | 28,6 °C               | 15:42 | 28.06.2012 | 16,8 °C                  |
| Taupunkt                                      | -60,0 °C   | 23:31 | 12.06.2012 | 18,8 °C               | 18:43 | 29.06.2012 | 5,5 °C                   |
| Windchill                                     | 2,1 °C     | 20:36 | 04.06.2012 | 28,3 °C               | 17:18 | 28.06.2012 | 15,8 °C                  |
| Luftfeuchte                                   | 0%         | 23:31 | 12.06.2012 | 94%                   | 05:01 | 05.06.2012 | 60%                      |
| Luftdruck                                     | 1002,4 hPa | 17:42 | 08.06.2012 | 1021,3 hPa            | 09:10 | 23.06.2012 | 1011,3 hPa               |
| Wind km/h                                     |            |       |            | 46,3 km/h             | 04:35 | 24.06.2012 | 6,6 km/h                 |
| Wind °  |            |       |            | N-NW                  | 04:35 | 24.06.2012 | N-NW                     |
| Wind Verlauf                                  |            |       |            |                       |       |            | #4768,6 km               |
| Regen l/m <sup>2</sup>                        |            |       |            | 17,6 l/m <sup>2</sup> | 14:02 | 05.06.2012 | #89,280 l/m <sup>2</sup> |
| Evapotransp.                                  |            |       |            |                       |       |            | #78,692 l/m <sup>2</sup> |
| Sonne h                                       |            |       |            | 5,67 h                | 21:29 | 14.06.2012 | #95:29 h                 |



Juni 2012

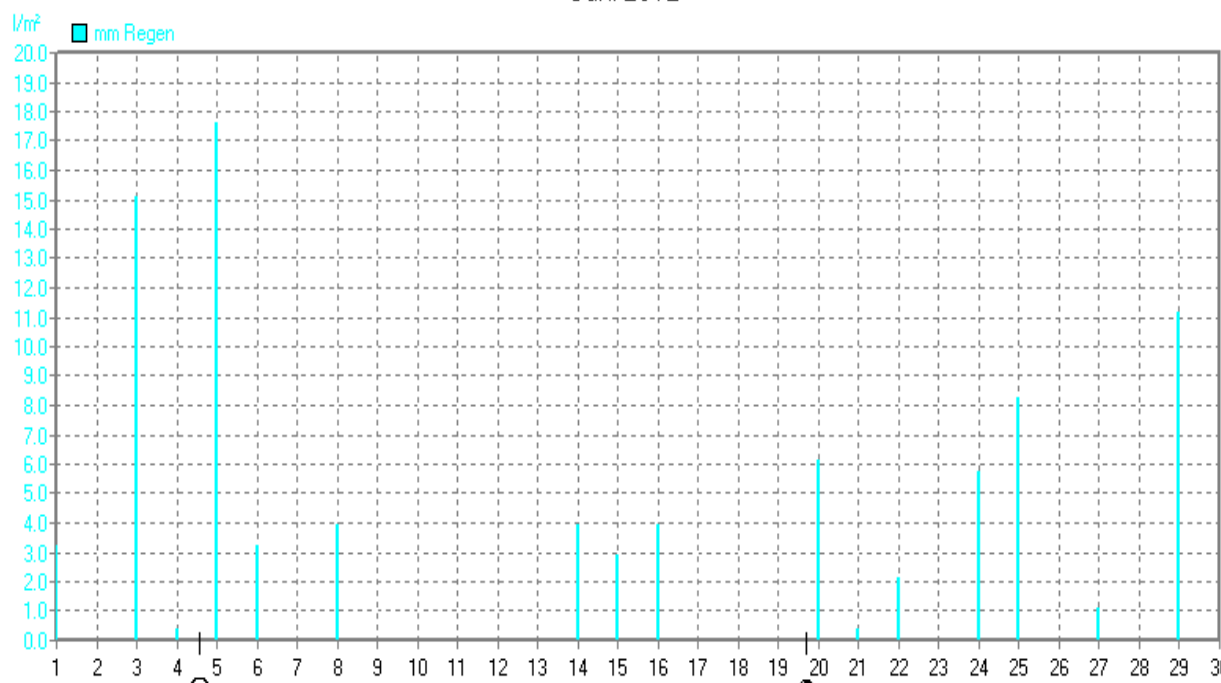
© Dr. Michael Heilos



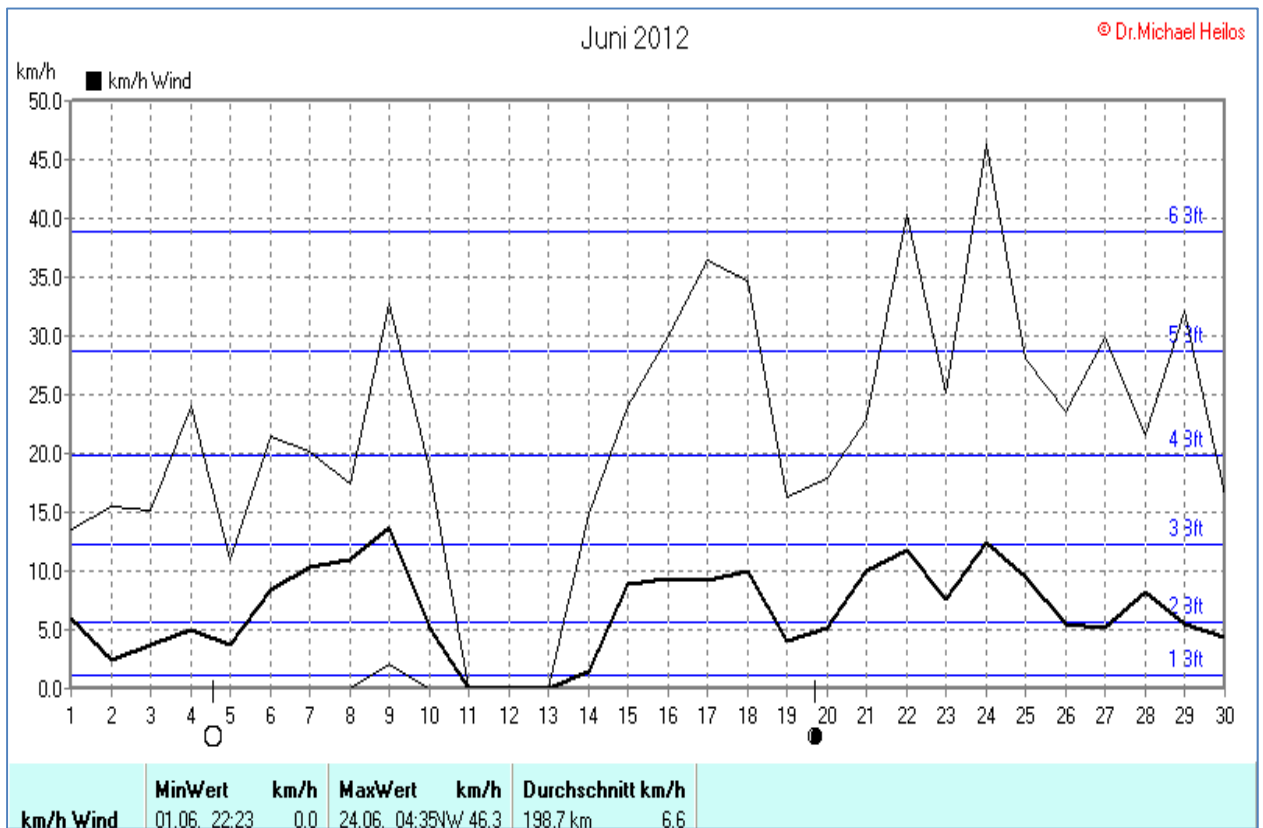
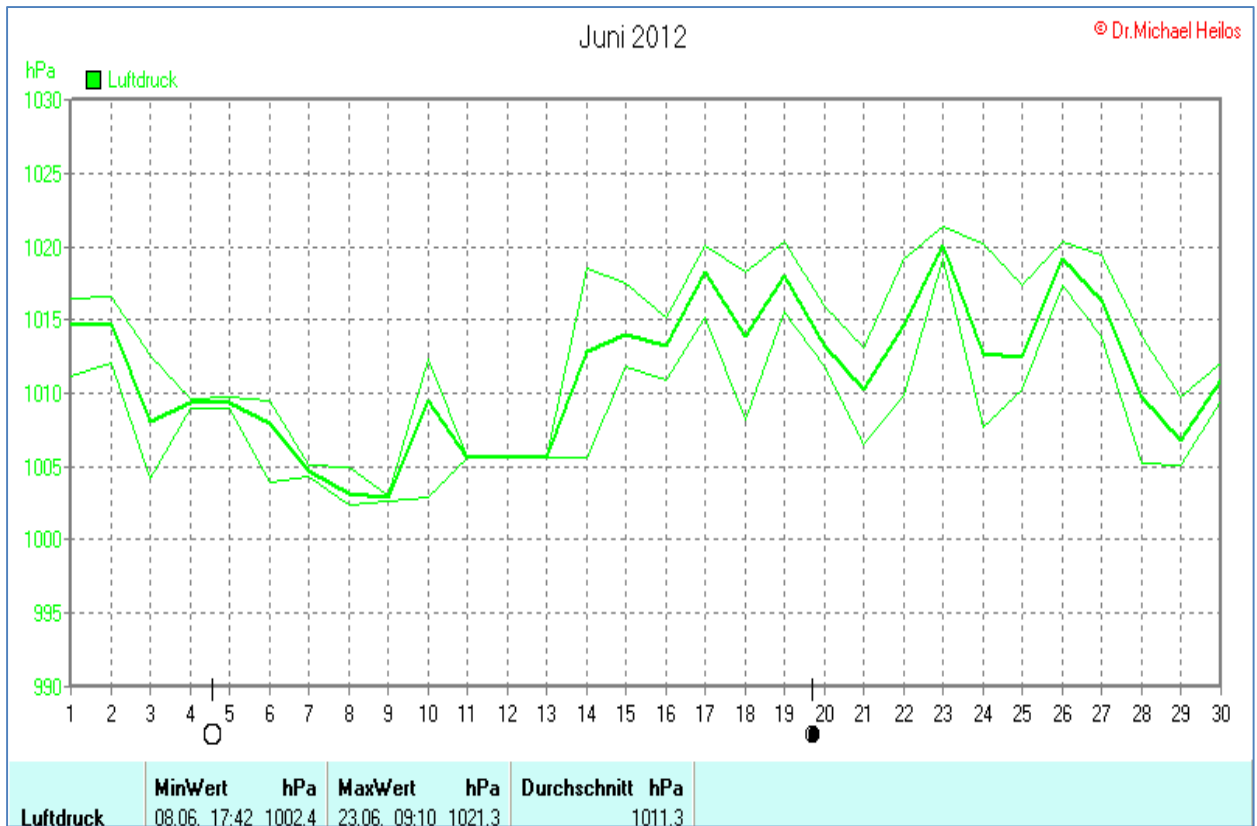
|                | MinWert      | % | MaxWert      | %  | Durchschnitt | %  |
|----------------|--------------|---|--------------|----|--------------|----|
| <b>% Außen</b> | 12.06. 23:31 | 0 | 05.06. 05:01 | 94 |              | 60 |

Juni 2012

© Dr. Michael Heilos

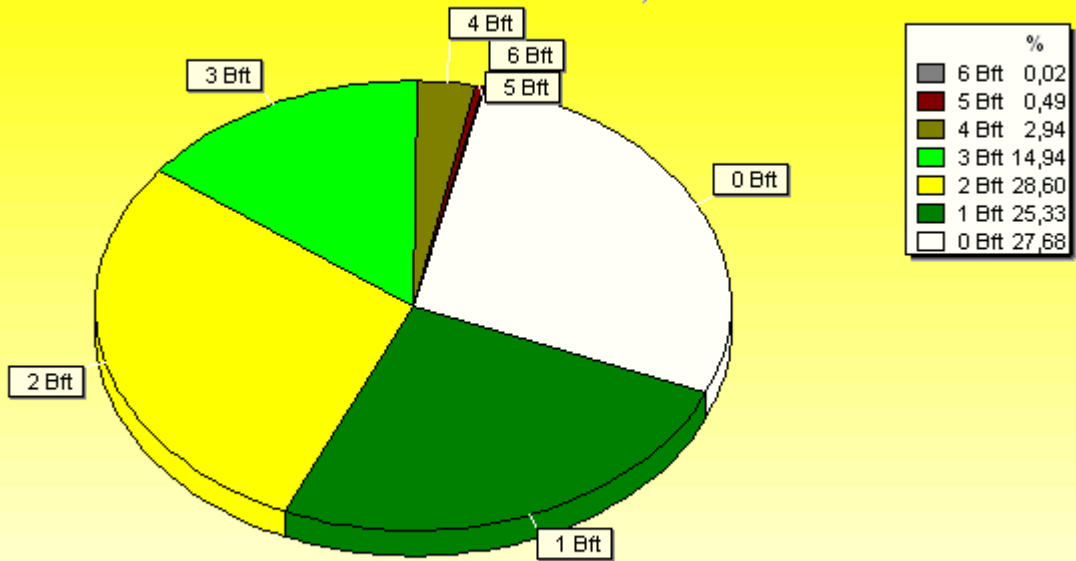


|                 | Regentage | MaxWert      | l/m² | Gesamt | l/m² |
|-----------------|-----------|--------------|------|--------|------|
| <b>mm Regen</b> | 16        | 05.06. 14:02 | 17.6 |        | 89.3 |



## Verteilung Windstärke Juni 2012

Borchen, Kreis Paderborn

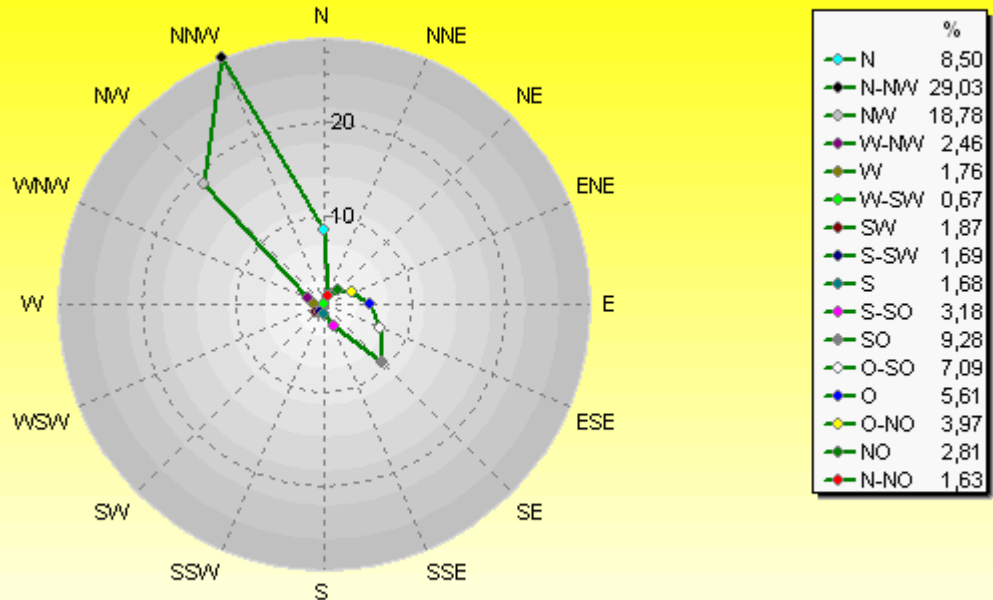


8821 Werte - Ø 6,6km/h - Max. 46,3km/h - 4768,6 km

© WzWin32 - © Dr.Michael Heilos - Borchen

## Verteilung Windrichtung Juni 2012

Borchen, Kreis Paderborn



6379 / 2442 Werte -> 27.7% Windstille - Ø 6,6km/h - Max. 46,3km/h - 4768,6 km

© WzWin32 - © Dr.Michael Heilos - Borchen

Juni 2012

© Dr. Michael Heilos

