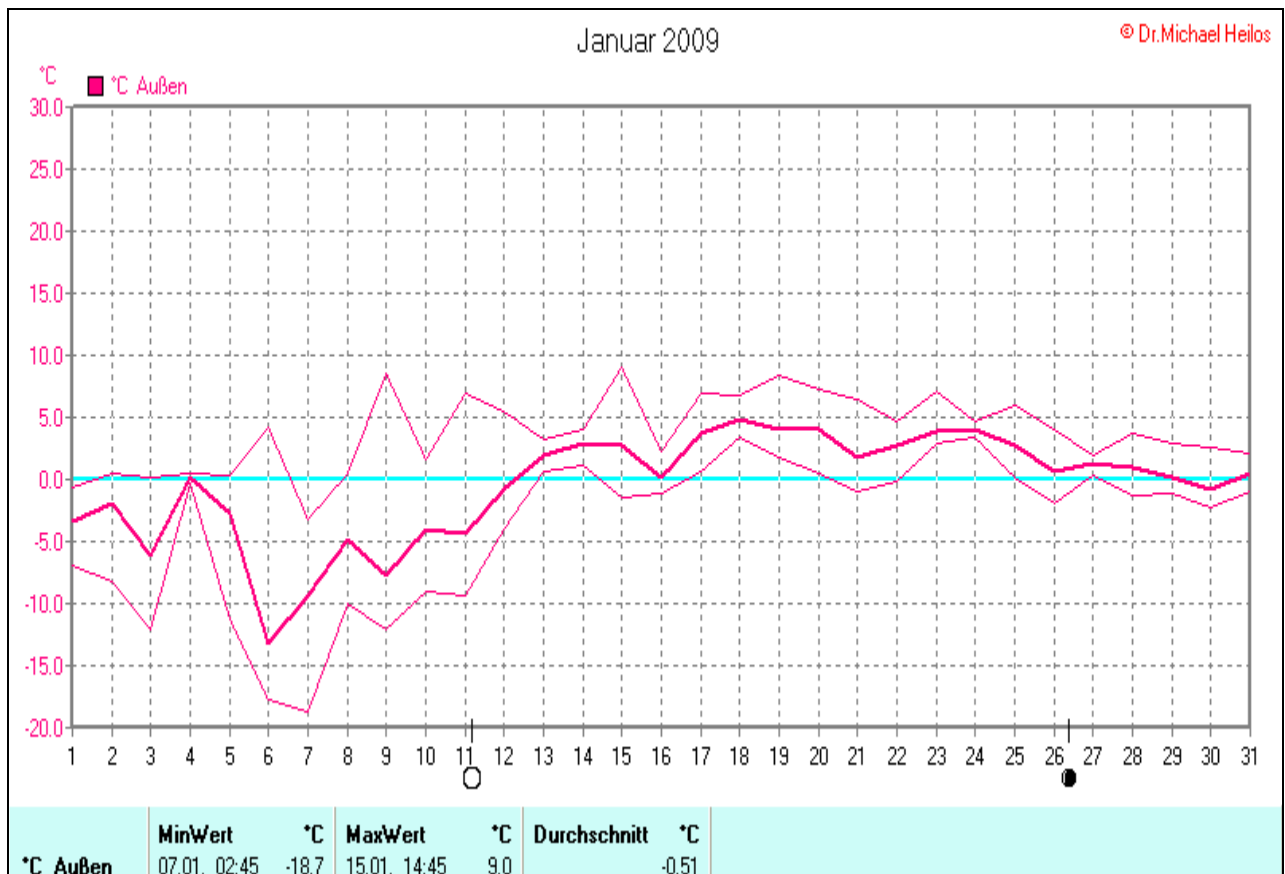
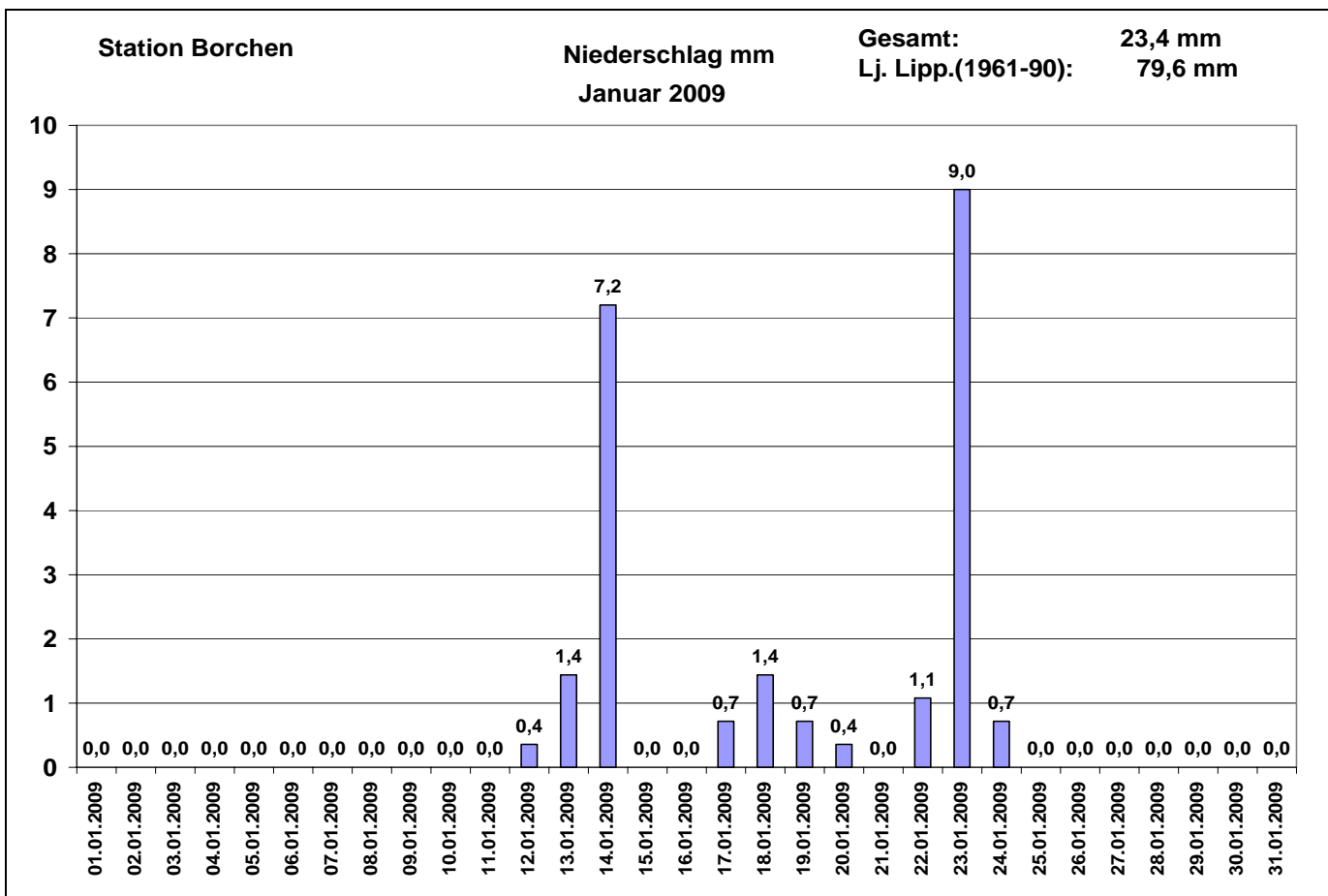
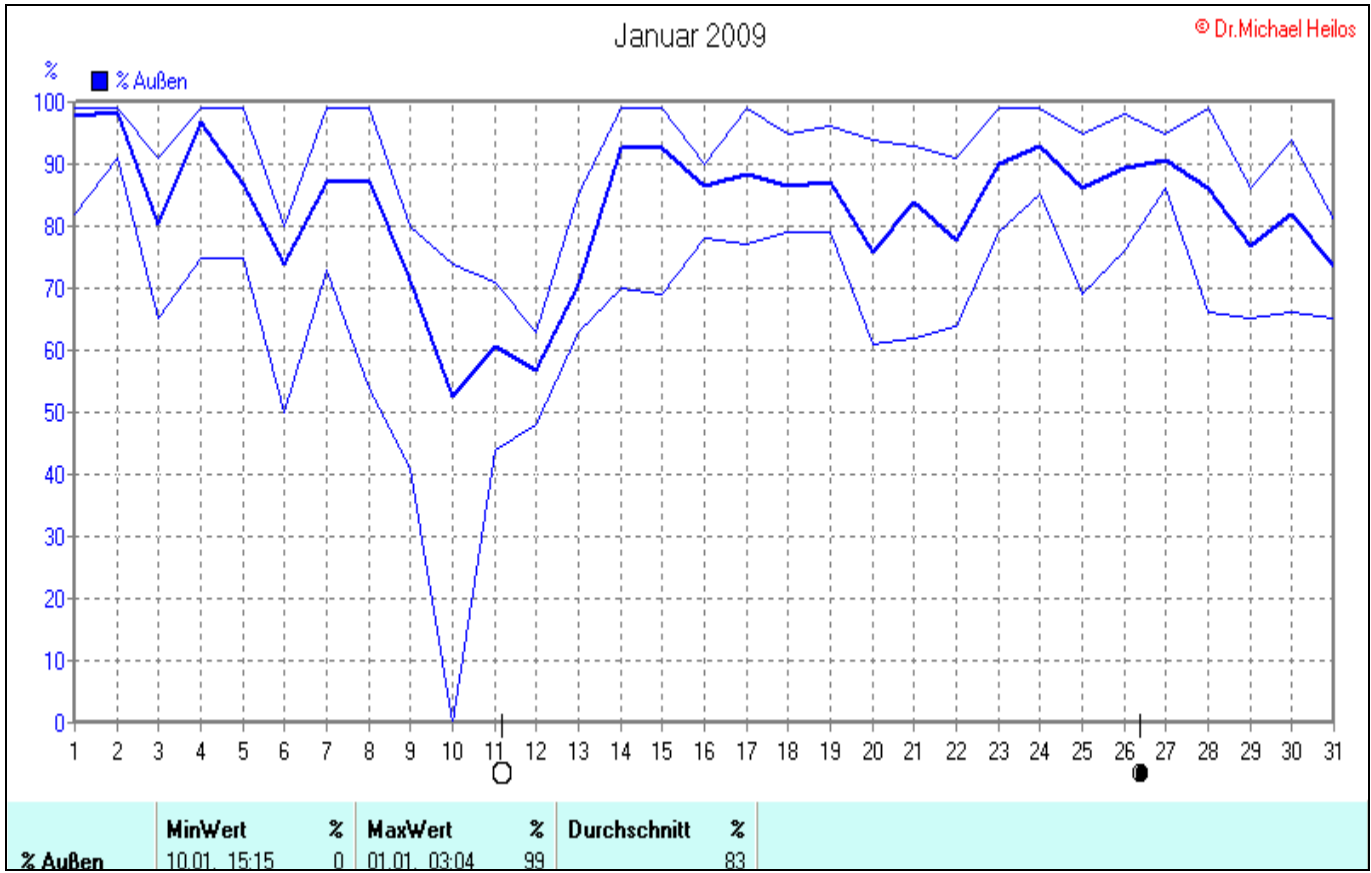


Wettergrafiken und Tabelle Januar 2009 Station Borchten

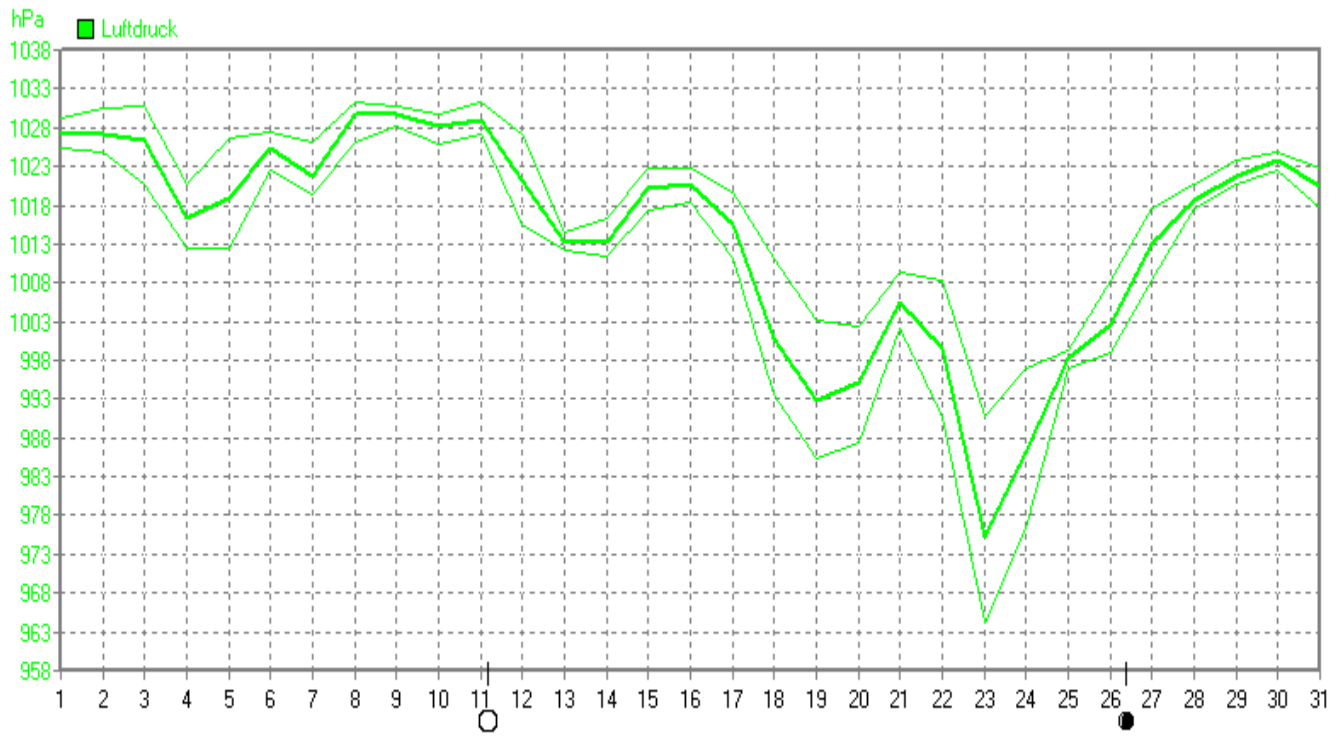
| Klimadaten | | Wetterstation Borchten | |
|--|------------------|--|--|
| Standortkoordinaten: geogr. 08°43'35"O - 51°39'58"N | | | |
| 143 m ü. NN | | | |
| Monatswerte: Jan 09 | | | |
| Temperatur: Vj.6,2°C) | -0,5°C | Tage mit Schneedecke: Eistage(Max<0,0°C): 9 Frosttage(MIN<0,0°C): 24 Sommertage(Max>=25°C): Heiße Tage(Max>=30°C): | |
| Lj.Mittel:(Lipp.1961-90): | 0,9°C | | |
| Abweichung: | - 1,4K | | |
| Absoluts Max.: 9,0 °C | | | |
| Absolutes Min.: - 18,7 °C | | | |
| Niederschlag: (Vj.63,4 mm) | 23,4 mm | Luftdruck(Meereshöhe):hPa Absolutes Max.: 1031 Absolutes Min.: 964(Rekord!!) Mittel: 1014,1 | |
| Max.Tag: 9,0 mm | | | |
| Lj.Mittel(Lipp. 1961-90): | 79,6 mm | | |
| Mittel relative Feuchte: | 83 % | | |
| Max. Windböe: | 65,0 km/h | Sonne: 104,1 h Lj.Lipp.(1961-90): 43,7 h | |
| Mittlere Wind: | 6,4 km/h | | |





Januar 2009

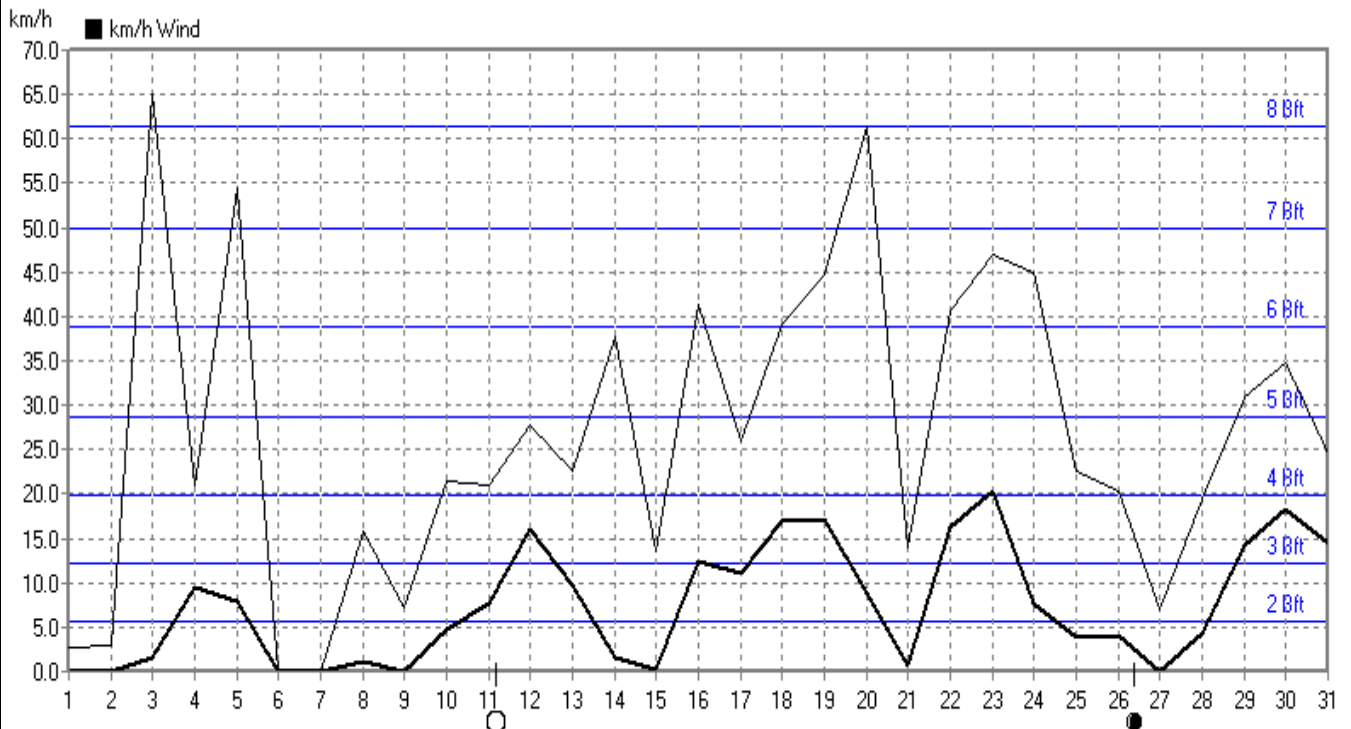
© Dr. Michael Heilos



| Luftdruck | MinWert | hPa | MaxWert | hPa | Durchschnitt | hPa | |
|-----------|---------|-------|---------|-------|--------------|--------|--------|
| Luftdruck | 23.01 | 15:23 | 964.2 | 11.01 | 10:14 | 1031.4 | 1014.1 |

Januar 2009

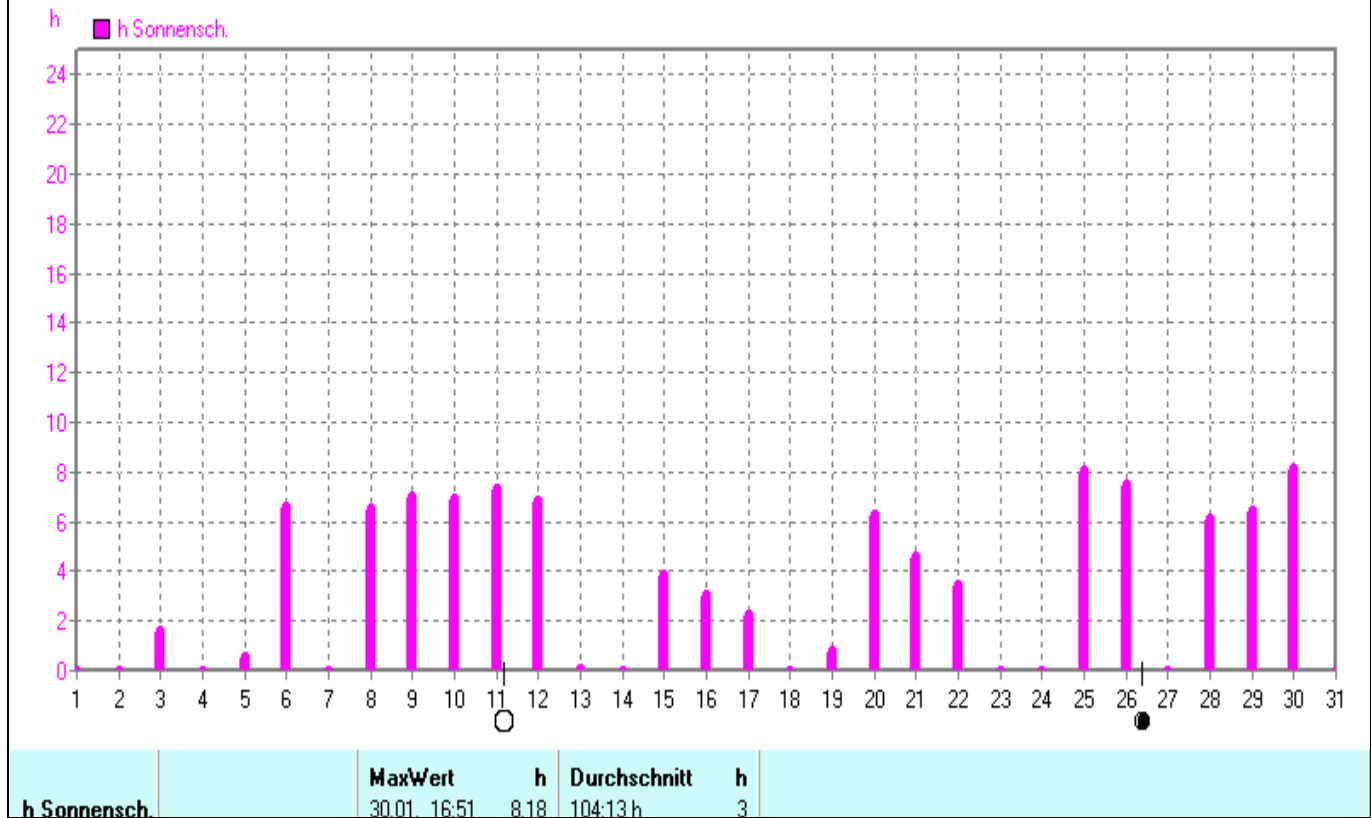
© Dr. Michael Heilos



| km/h Wind | MinWert | km/h | MaxWert | km/h | Durchschnitt | km/h | | |
|-----------|---------|-------|---------|-------|--------------|------|----------|-----|
| km/h Wind | 01.01 | 00:00 | 0.0 | 03.01 | 20:15W | 65.0 | 230.9 km | 7.4 |

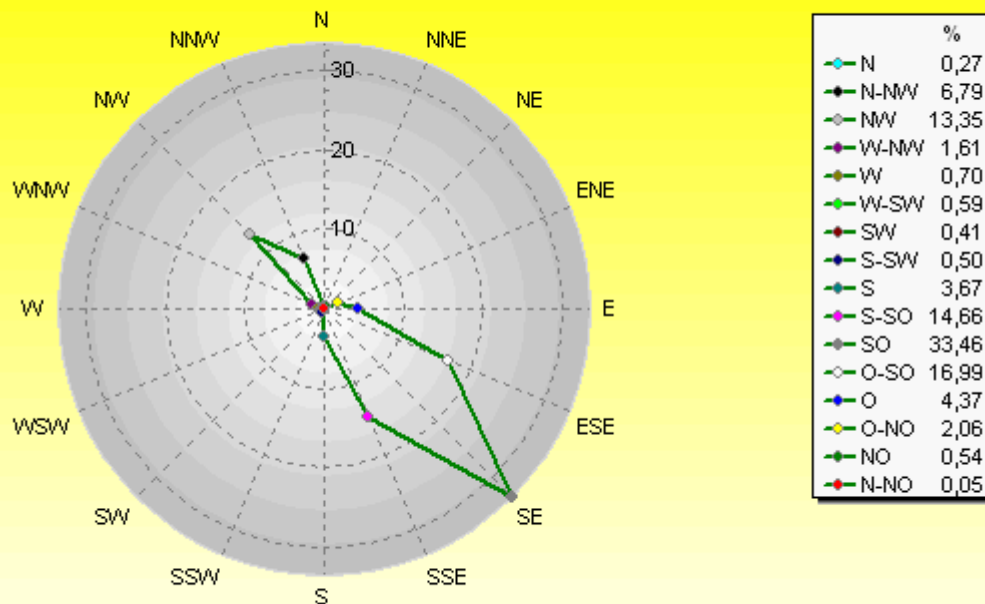
Januar 2009

© Dr. Michael Heilos



Verteilung Windrichtung Januar 2009

Borchen, Kreis Paderborn

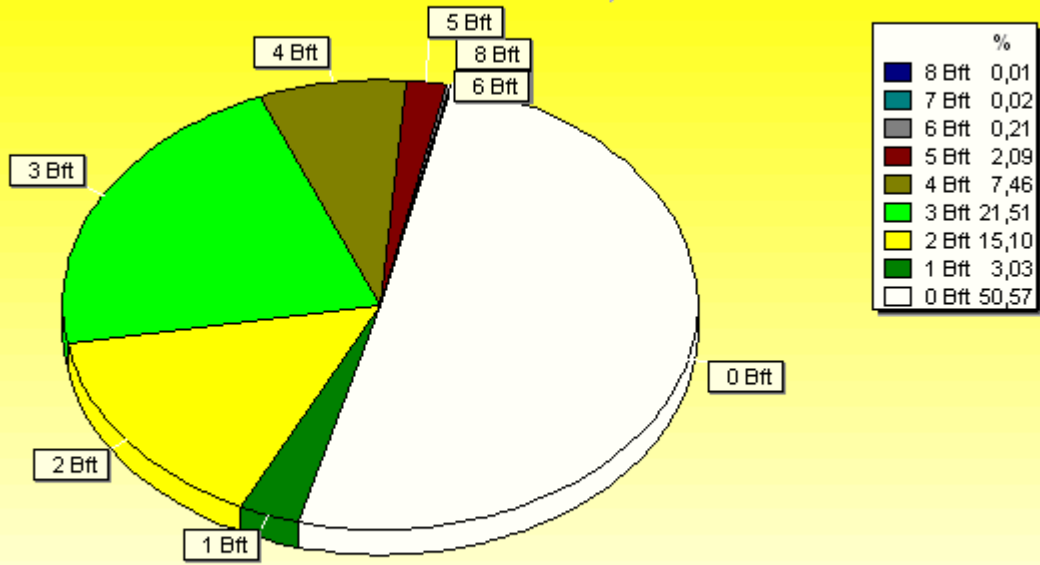


4420 / 4522 Werte -> 50.6% Windstille - Ø 7,4km/h - Max. 65,0km/h - 5541,9 km

© WzWin32 - © Dr. Michael Heilos - Borchen

Verteilung Windstärke Januar 2009

Borchen, Kreis Paderborn



8942 Werte - Ø 7,4km/h - Max. 65,0km/h - 5541,9 km

© WzWin32 - © Dr.Michael Heilos - Borchen